



Belton-Stillhouse Pipeline Update

***Presented by
Trey Buzbee
Central and Lower Basin
Customer Relations Business Manager***

Meeting Date: October 26, 2015

Belton-Stillhouse Pipeline

Project Timeline

- **Belton-Stillhouse concept**
- **2005-2007: Bel-house System Water Availability Agreements executed; 34,925 acre-feet**
- **2009: Bell Co. WCID No. 1 contract amendment & partnership with BRA**
- **2012-2015: Project due diligence**
- **2015-2016: Negotiate pipeline agreement**
- **2016-2020: Pipeline design & acquire route**
- **2030-2050: Pipeline in place to meet demands**

Belton-Stillhouse Pipeline

System Rate Benefit

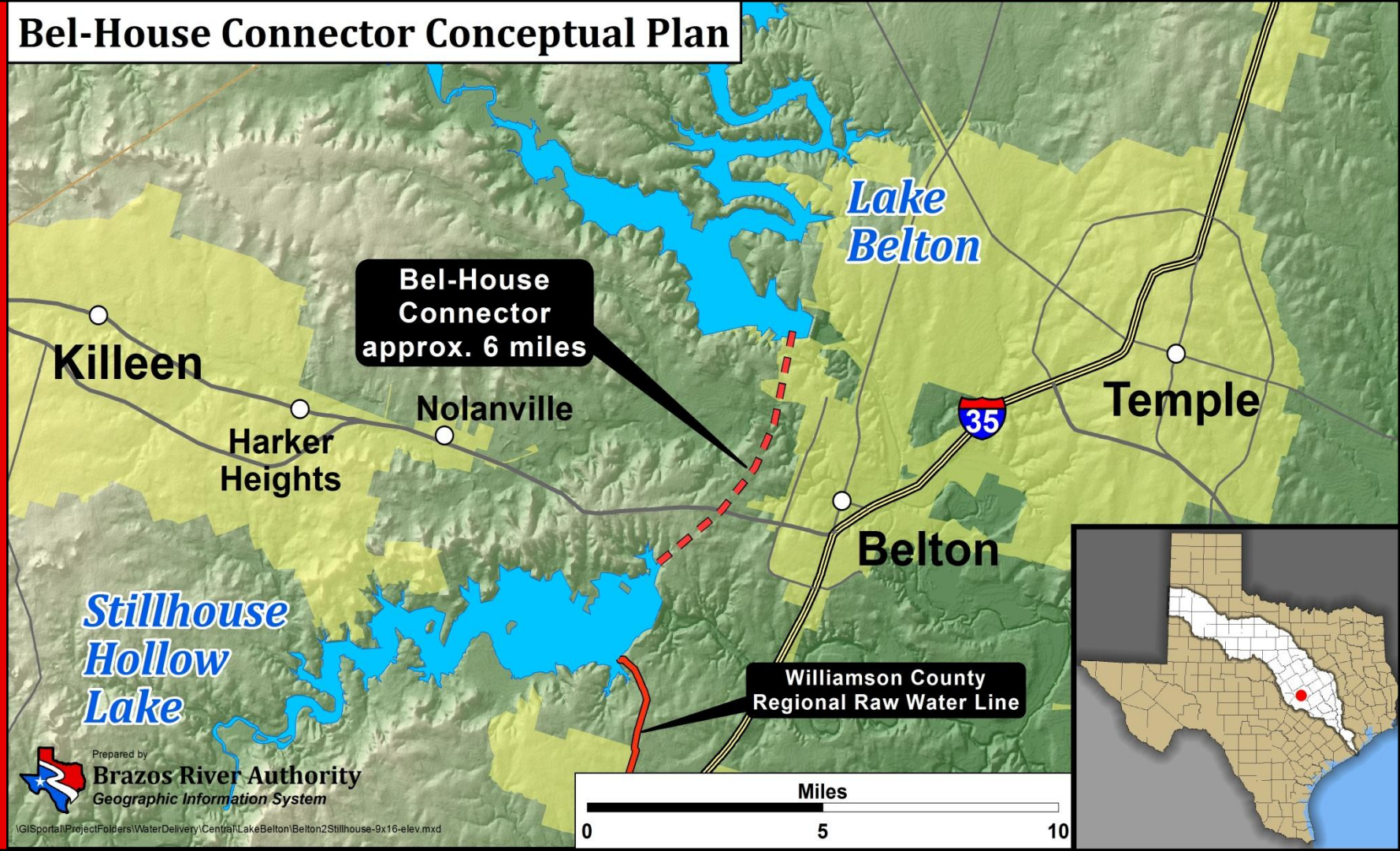
- Partnership with Bell Co. WCID reduces pipeline cost
 - \$35 million
- Delays need for more expensive projects

Project Implementation

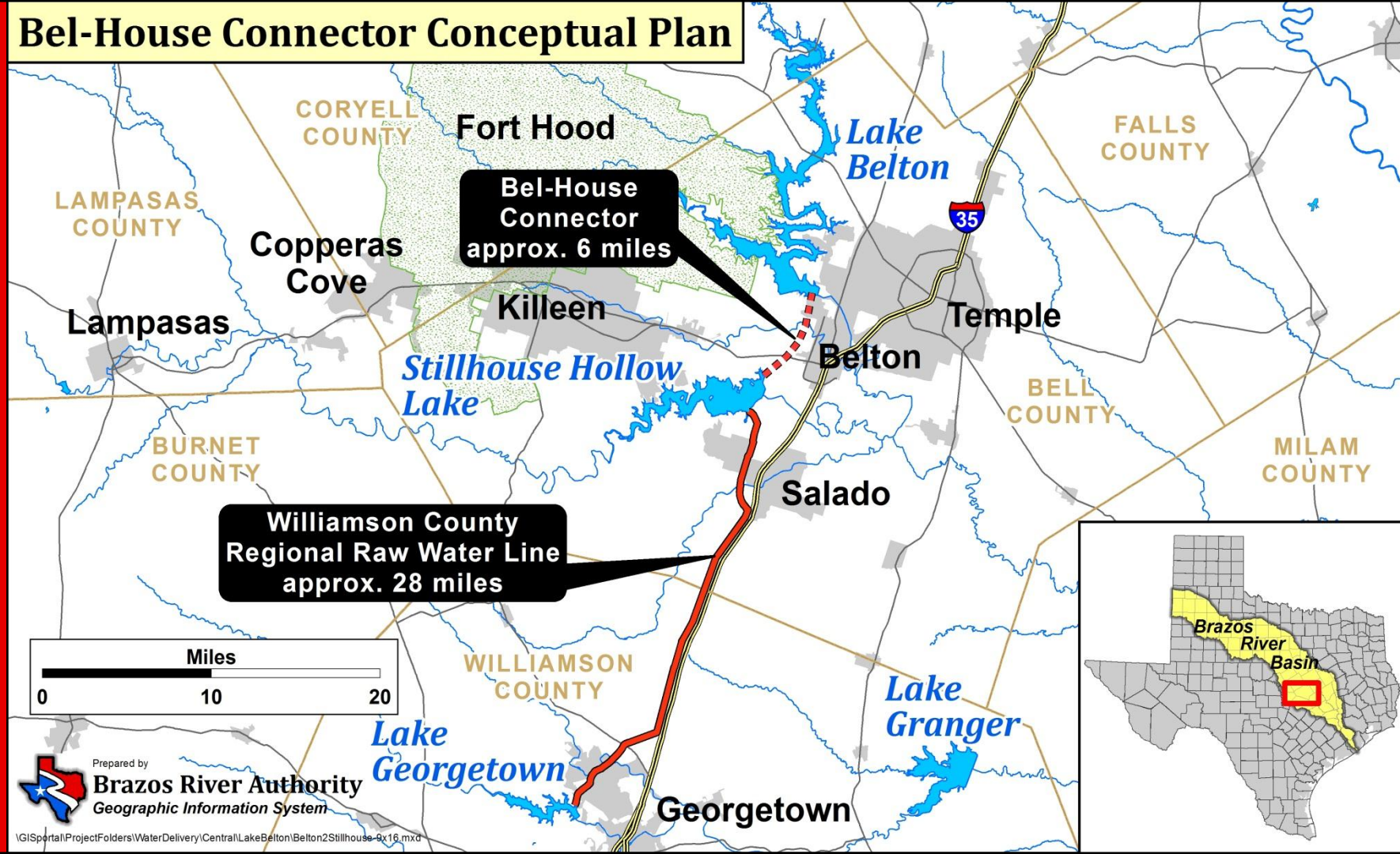
- 2015-2016: Negotiate pipeline agreement
- 2016: Acquire easements
- 2017: Pipeline design & engineering
- 2018-2020: Construction



Bel-House Connector Conceptual Plan



Bel-House Connector Conceptual Plan



Prepared by
Brazos River Authority
Geographic Information System

Belton-Stillhouse Pipeline

- **Tasks Complete**
 - Preliminary Engineering & Right-of-Way Study
 - Physical Hydraulic Model
 - Infrastructure Study
 - Hydrology update
- **Next Steps**
 - Negotiate contract with Bell Co. WCID No. 1
 - Bell Co. WCID No. 1 will own infrastructure
 - Present final draft contract for approval January 2016



**Brazos
River
Authority**