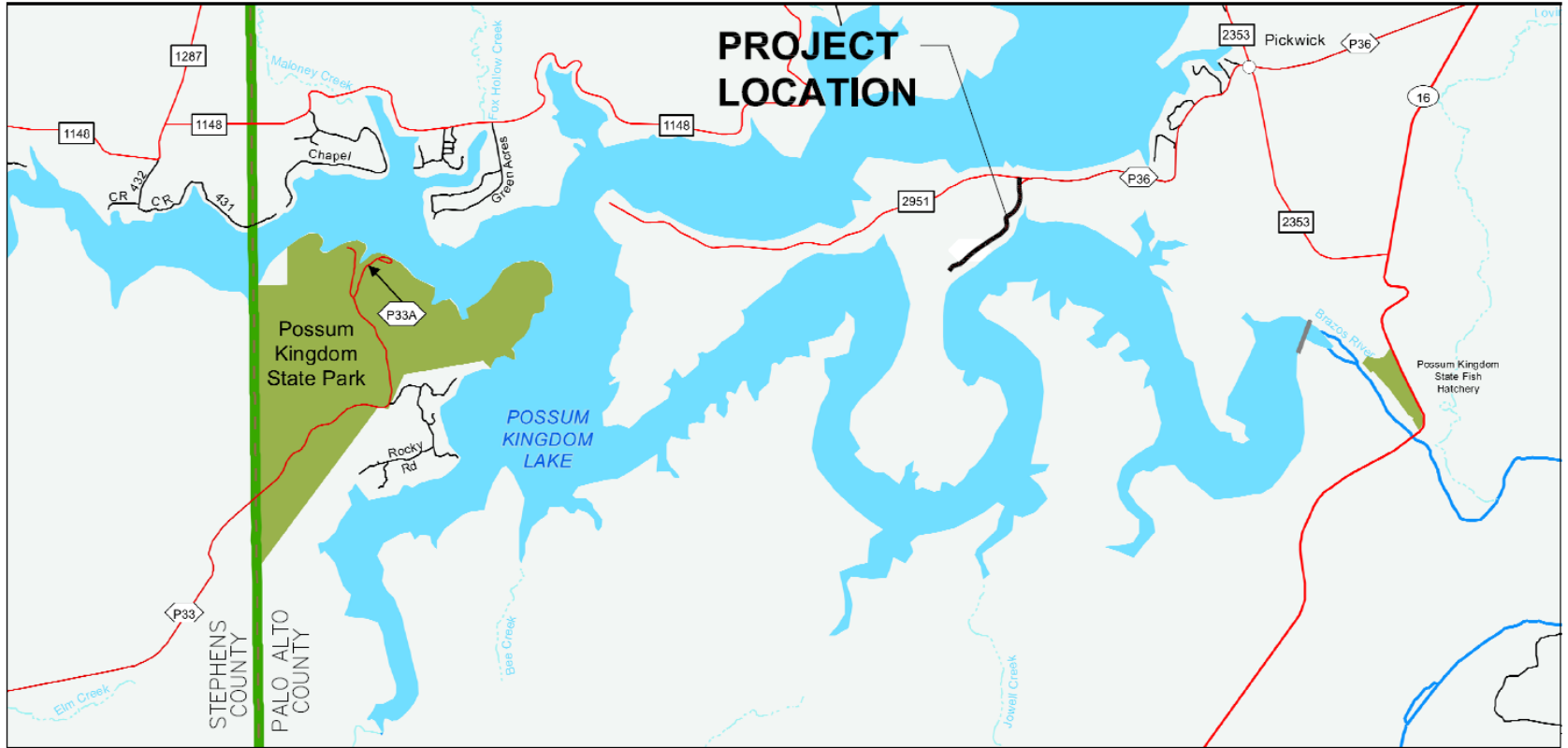




***Texas Department of
Transportation's Presentation
Related to Relocation of
Park Road 36***

***Presented by
John Cordary, Jr.
Texas Department of Transportation***



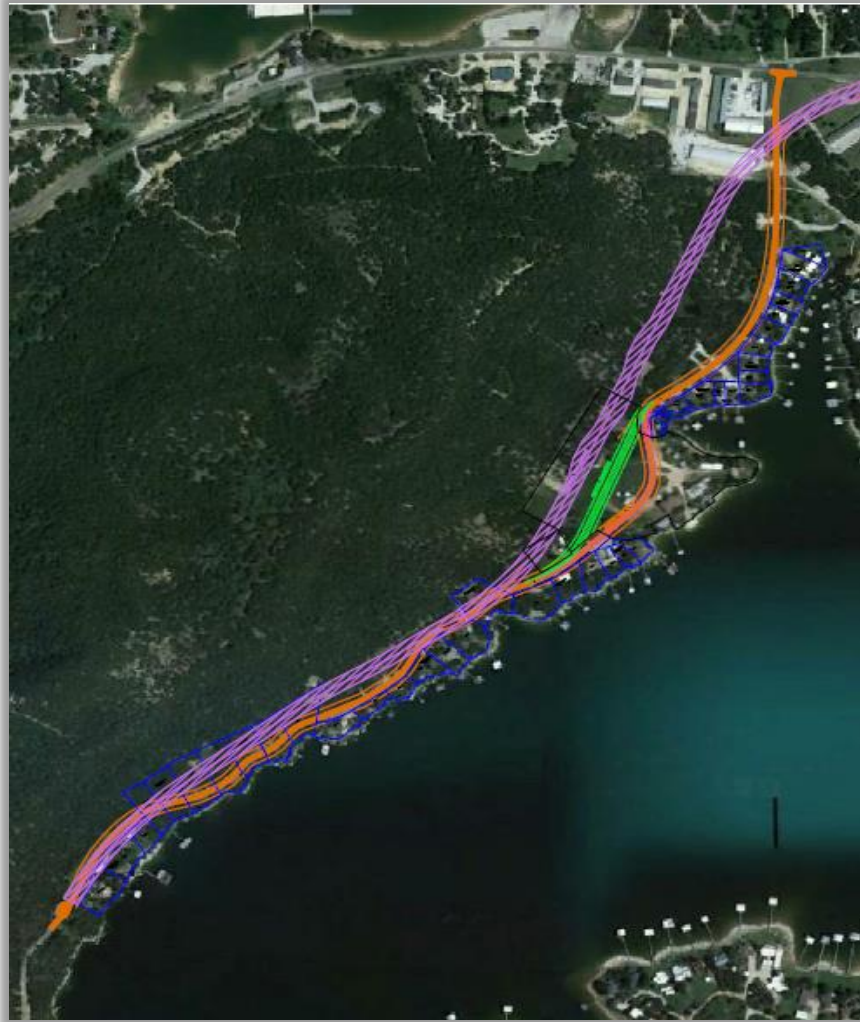
LOCATION MAP
(NOT TO SCALE)

Meeting Date: January 25, 2016



Brazos River Authority





Meeting Date: January 25, 2016

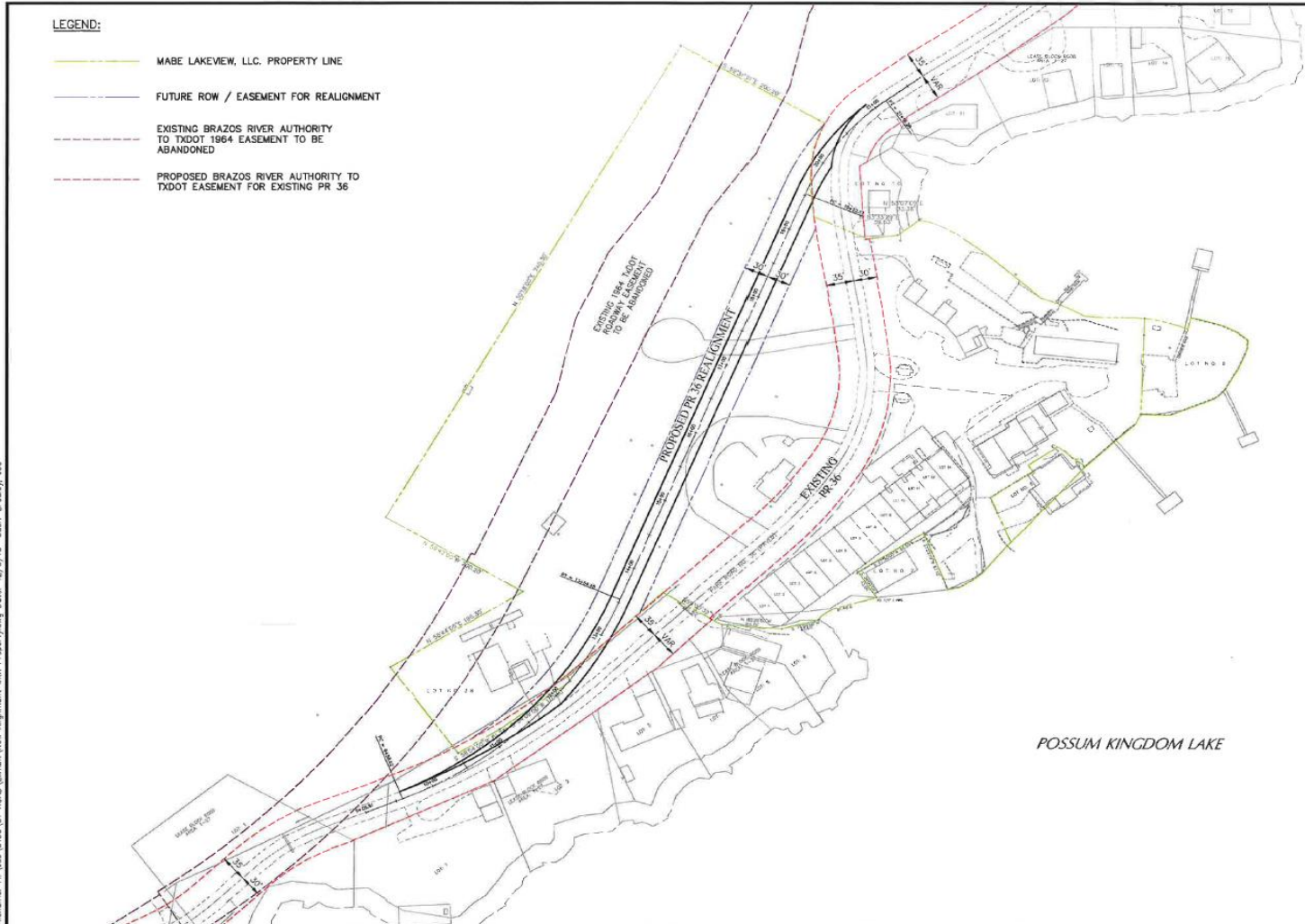




Brazos River Authority

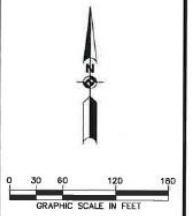
LEGEND:

-  MABE LAKEVIEW, LLC. PROPERTY LINE
-  FUTURE ROW / EASEMENT FOR REALIGNMENT
-  EXISTING BRAZOS RIVER AUTHORITY TO TXDOT 1964 EASEMENT TO BE ABANDONED
-  PROPOSED BRAZOS RIVER AUTHORITY TO TXDOT EASEMENT FOR EXISTING PR 36



POSSUM KINGDOM LAKE

SIRA
 Schickel, Rollins and Associates, Inc.
 Landscape Architecture - Civil Engineering - Planning
 781 Corporate Drive, Suite 200, P.O. Box 875482, Dallas, Texas 75288
 Phone: 972-462-2726 Fax: 972-462-2722
 Website: www.sira.com



This Document is Released For The Purpose Of Review Under The Authority Of Joseph E. Brodley, P.E. 59235 On December 8, 2015. It is NOT to be Used For Construction, Bidding, Or Permit Purposes.

Schickel, Rollins and Associates, P.C.
 Texas Registered Engineering Firm #5327

DATE:	December 8, 2015
REVISED:	
STATUS:	Preliminary
DESIGN BY:	JEB
DRAWN BY:	JEB
JOB NO.:	5760
PROJECT NAME:	PR 36 REALIGNMENT

PR 36 REALIGNMENT EASEMENT EXHIBIT

BAR IS ONE INCH LONG ON ORIGINAL DRAWING. CHECK SCALE AND ADJUST ACCORDINGLY.

1" = 1'

SHEET NO.



Brazos River Authority



Land-Use Summary:

Condominiums	= 50 units
Private Lots	= 0 units
Parking	= 30 sps
Boat parking	= 20 sps
Marina	= 50 sps

DRAFT
1.13.2016



Conceptual Condominium
Site Plan

Possum Kingdom
±11.07 Ac. Tract

LAND STRATEGIES INC.
PAUL LINNAN & ASSOCIATES
DEVELOPMENT, DESIGN, AND PLANNING CONSULTANTS
LANDSCAPE ARCHITECTS



Brazos River Authority