



Drought Study

***Presented by
Jim Forté
Planning and Development Manager***

Meeting Date: July 31, 2017



Questions from Permit

In recognition of current drought conditions, BRA shall perform a detailed evaluation of whether the recently-ended drought:

- (1) represents a drought worse than the drought of record of the 1950s in the Brazos River Basin; and*
- (2) decreases the amount of water available for appropriation under this permit.*

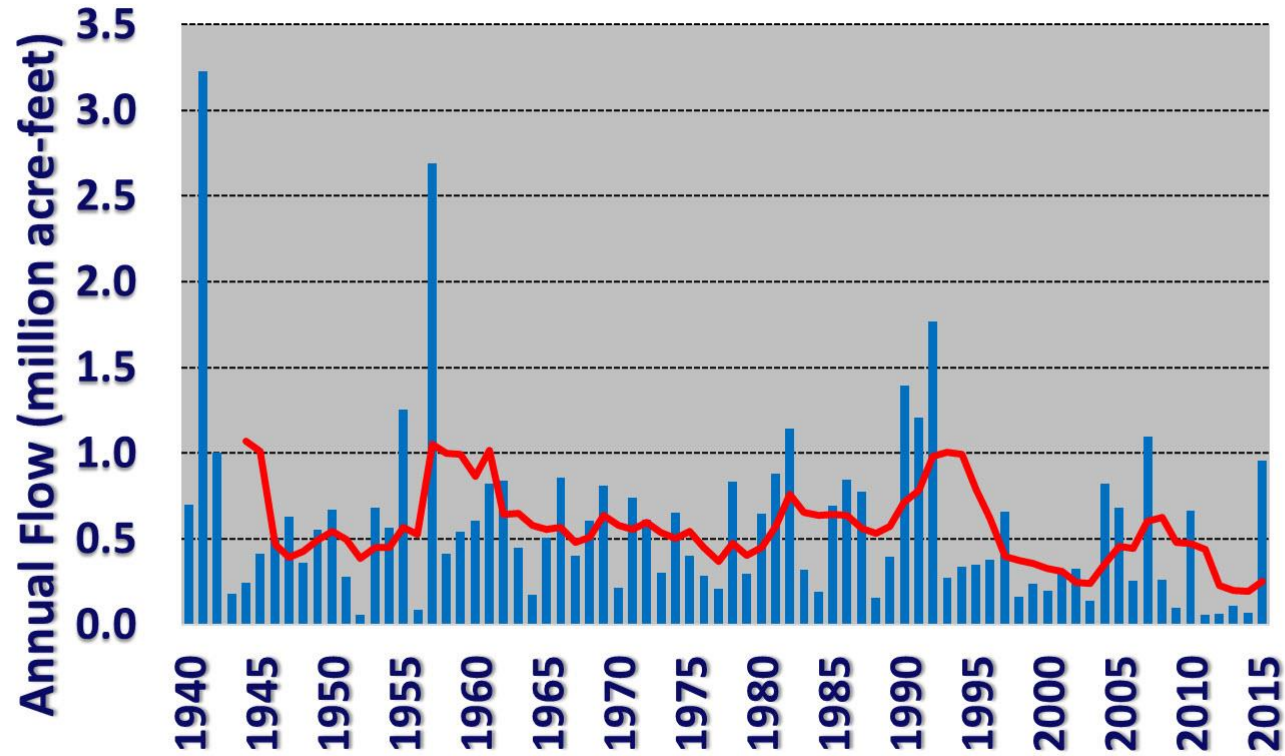


Study Overview

- **Extend WAM hydrology through 2015**
- **Determine extent of new drought**
- **Evaluate impact on BRA system**
- **Recommendations for amending permit**

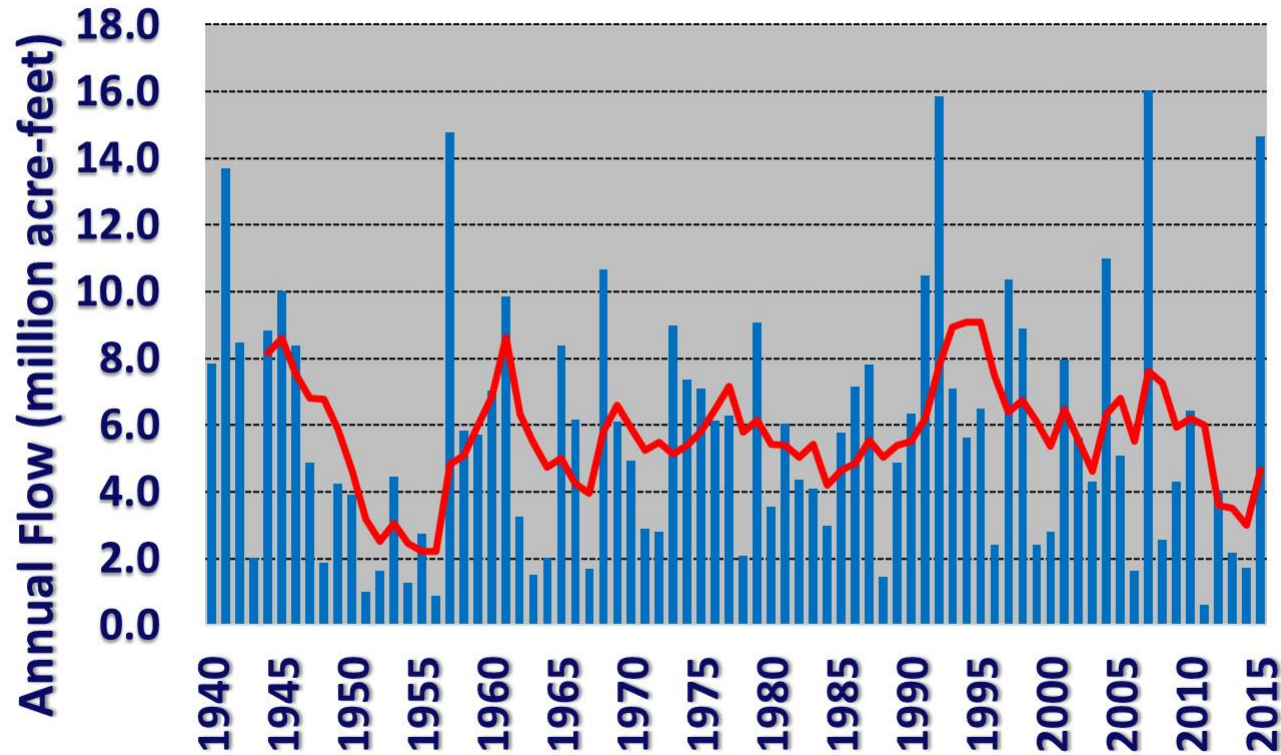


Brazos River nr South Bend



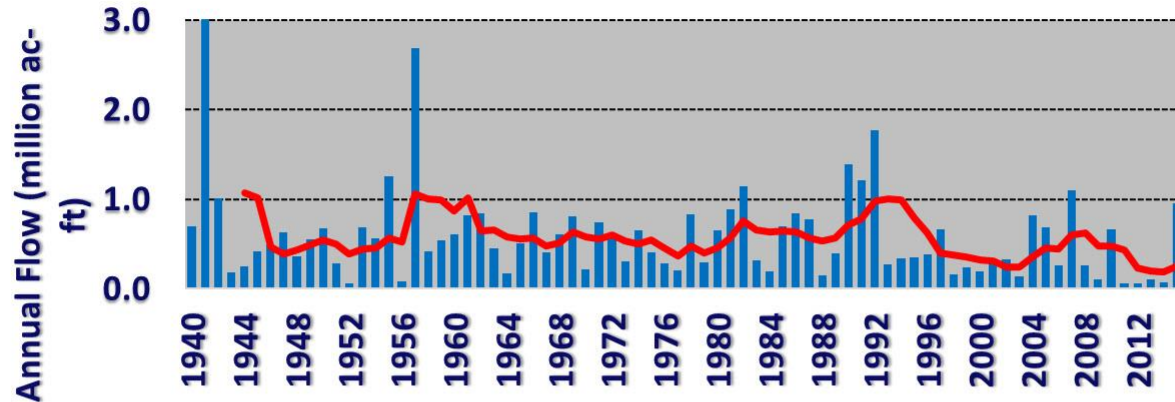


Brazos River at Richmond

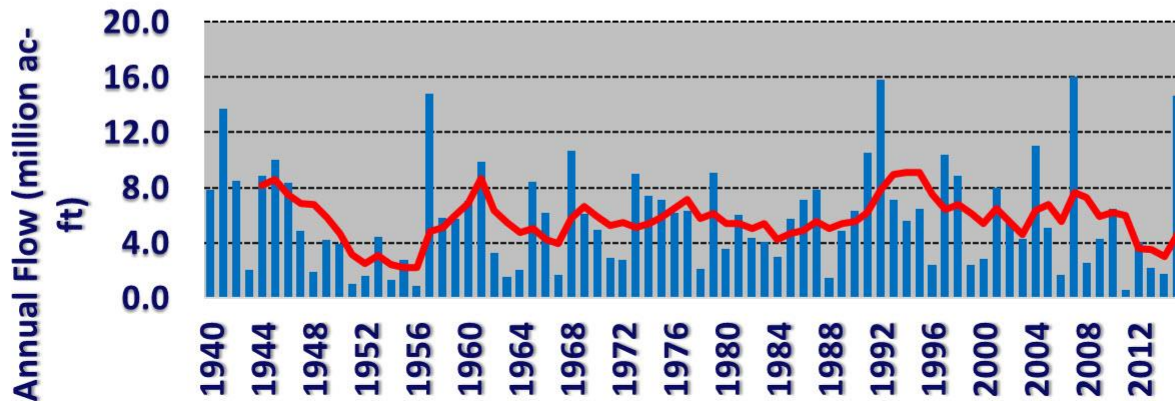




Brazos River nr South Bend

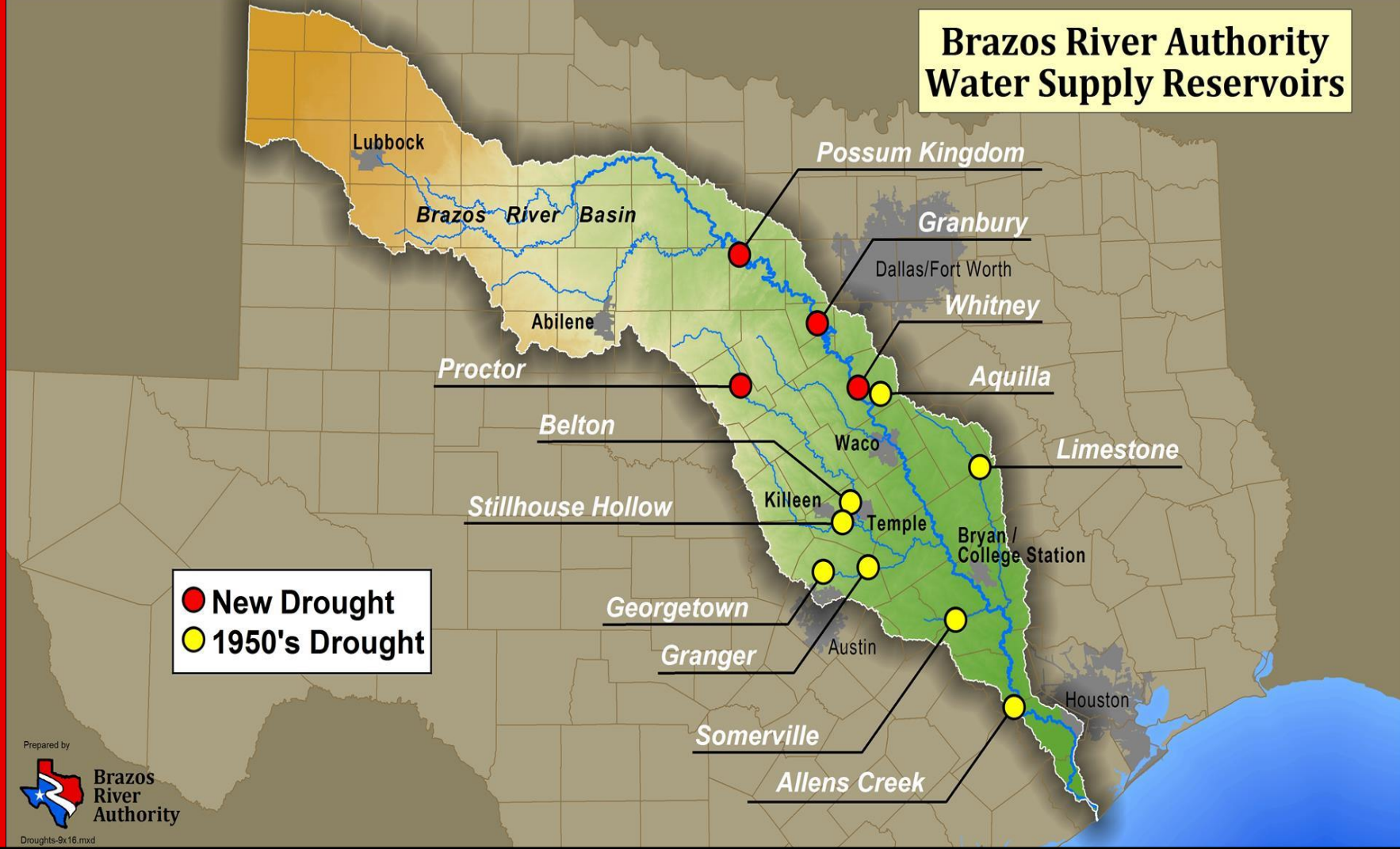


Brazos River at Richmond





Brazos River Authority Water Supply Reservoirs



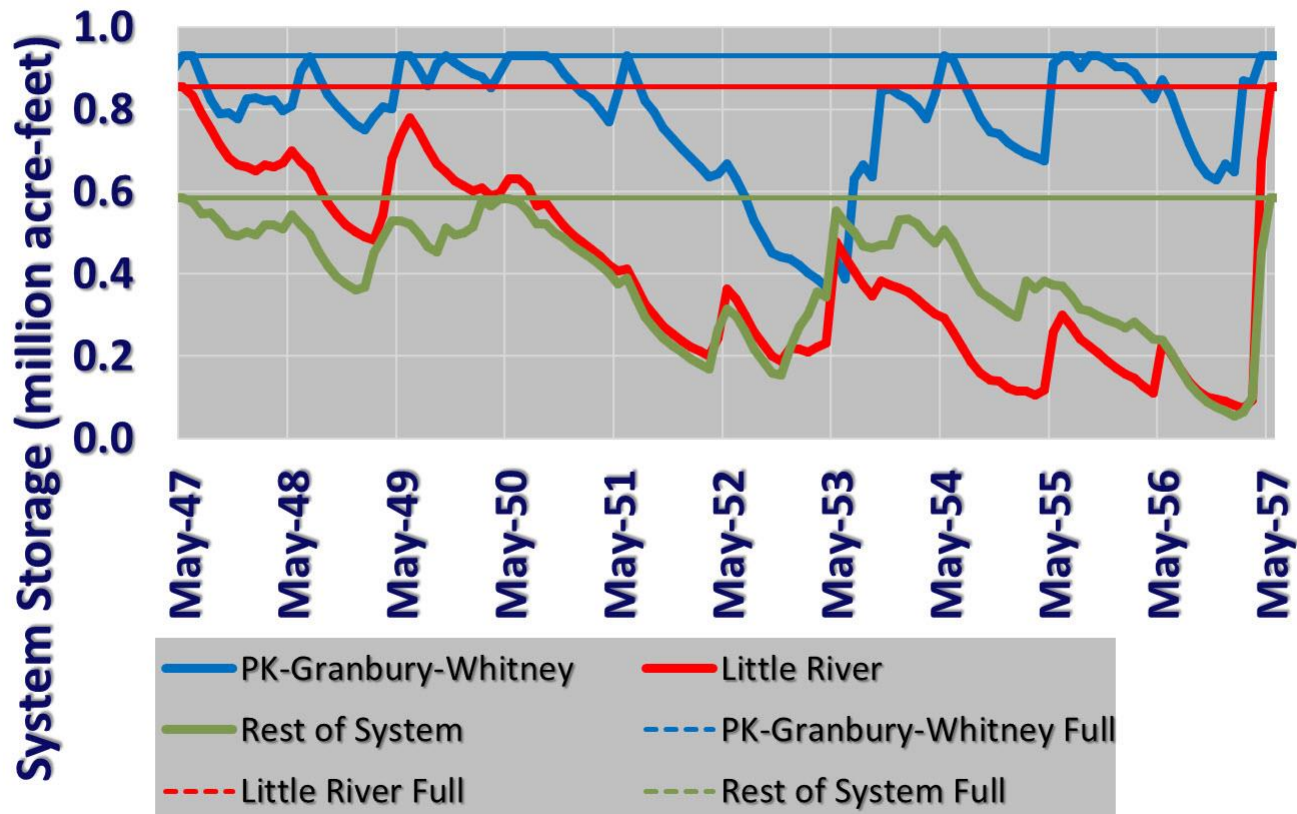
Prepared by



Brazos
River
Authority

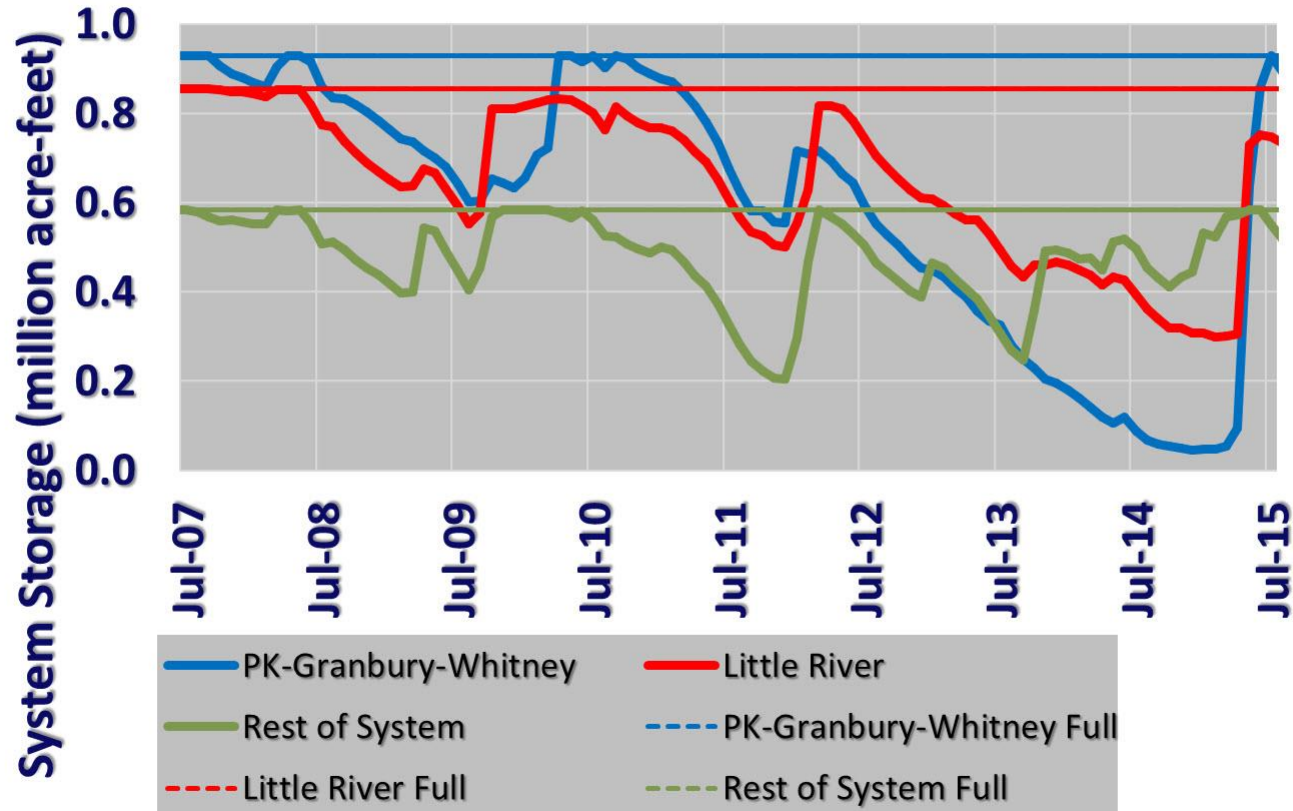


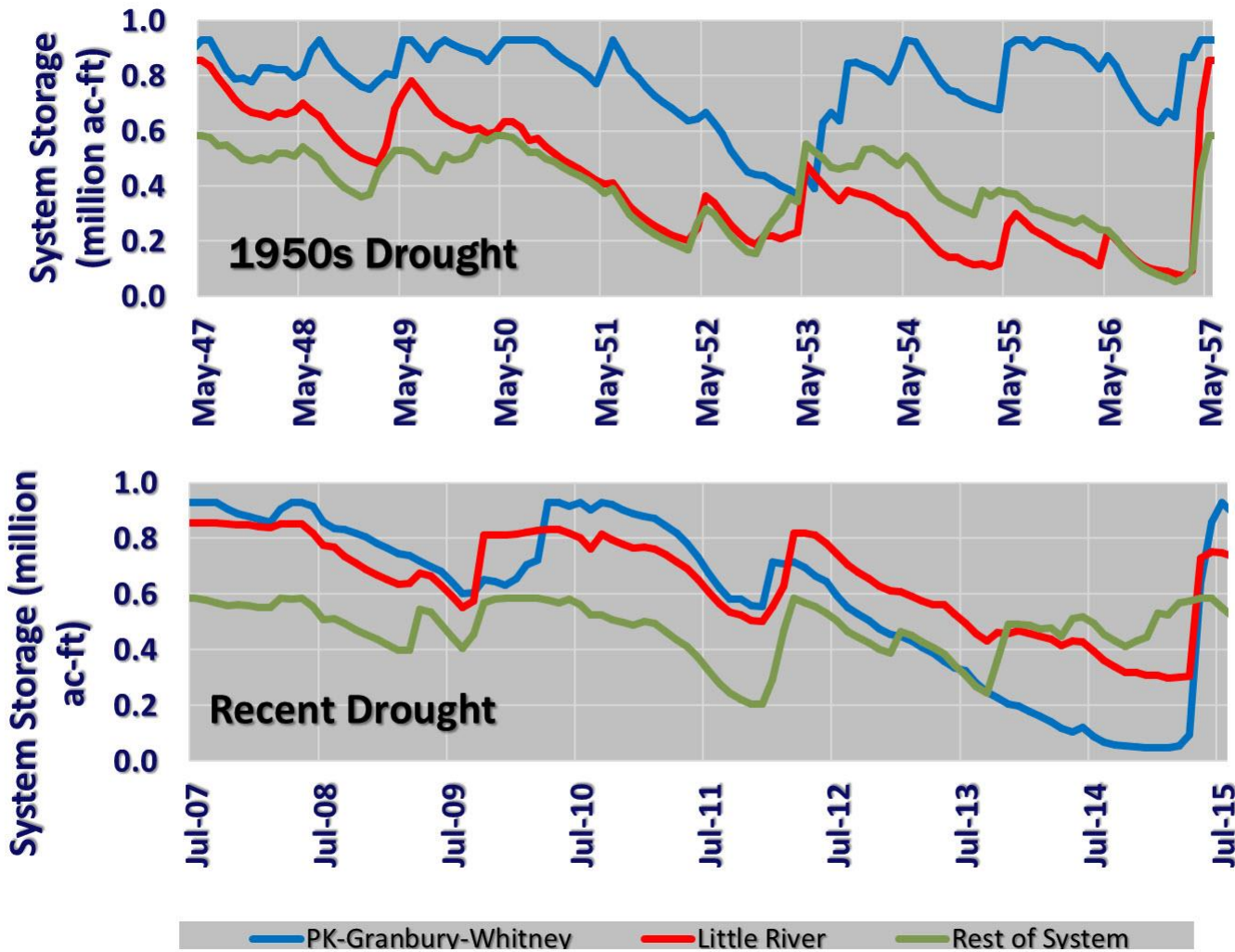
1950s Drought





Recent Drought







Benefits of System Operation

- Timing of droughts different for different parts of system
- The System Operation Permit allows BRA to use that to make more supply
- New drought highlights value of System Operation Permit



Questions from Permit

In recognition of current drought conditions, BRA shall perform a detailed evaluation of whether the recently-ended drought:

- (1) represents a drought worse than the drought of record of the 1950s in the Brazos River Basin; and*
- (2) decreases the amount of water available for appropriation under this permit.*



Answers to Questions

- Drought worse than the 1950s?
 - Yes for part of system, but not for basin as a whole
- Decrease in SysOps appropriation?
 - Can still divert whole amount in appropriation modeling
 - No need to reduce appropriation



**Brazos
River
Authority**