



***Texas Water Development Board and
Lower Colorado River Authority
Groundwater and Surface Water Study***

***Aaron Abel
Water Services Manager***



TWDB/LCRA Study

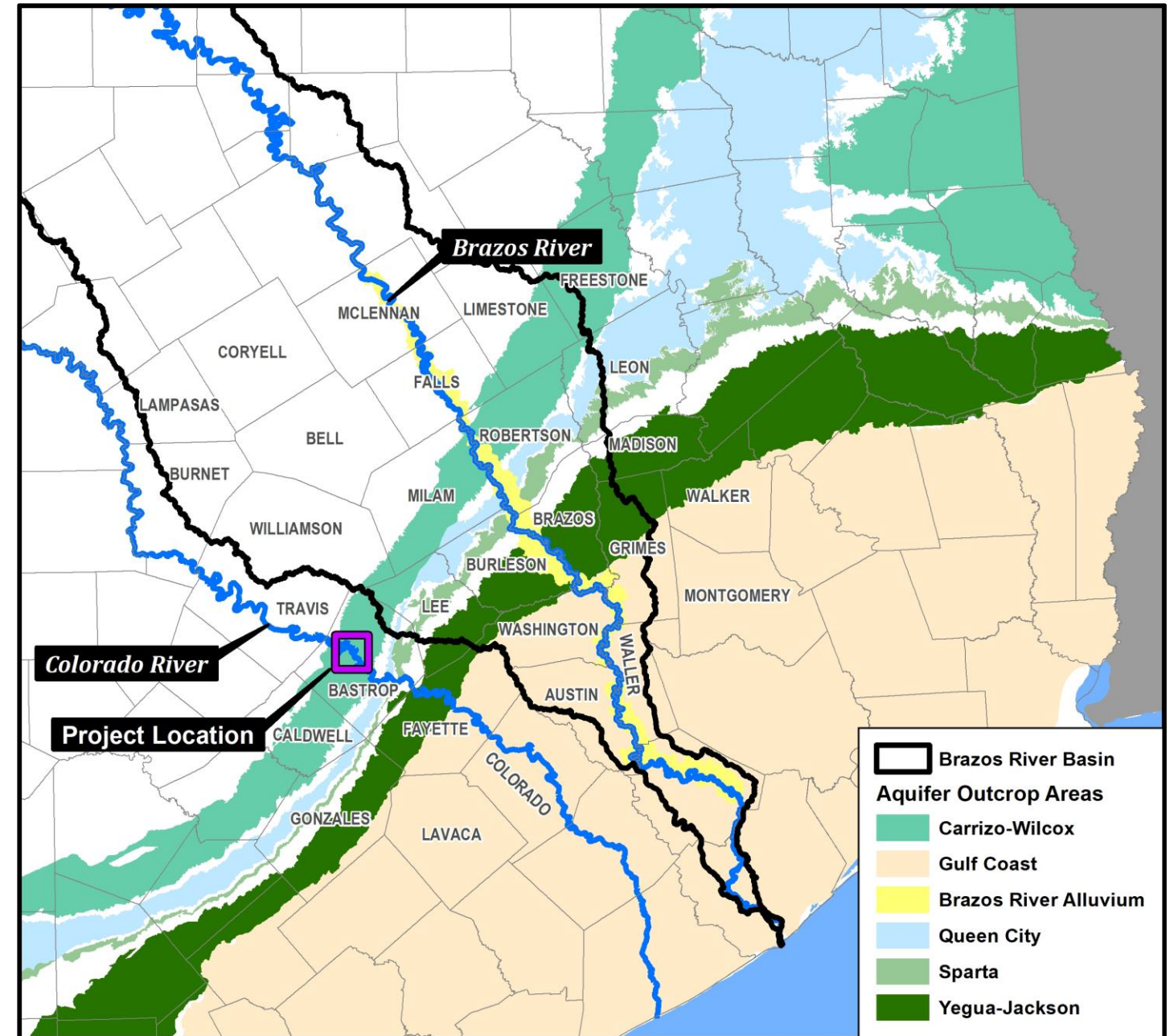
- **Science behind the interaction between GW and Surface Water is lacking.....**
- **Impacts understanding of:**
 - **Surface water rights**
 - **Groundwater pumping**
 - **Relationship between alluvial aquifers and the river**
 - **Instream flows**



TWDB/LCRA Study

Project Goals

- Obtain data to determine interactions between GW and SW
- Explore and evaluate various data techniques of the data
- Possible development of methodologies used for future studies in other river basins





TWDB/LCRA Study Benefits

- **Establishment of data collection/analysis approach to determine the interactions that can be applied elsewhere across the State**
- **Gain better understanding of the relationship between the alluvial aquifers and the rivers**
- **Inform strategies to help achieve instream flow requirements**



**Brazos
River
Authority**





The following resolution is presented for consideration to the Board of Directors of the Brazos River Authority for adoption at its April 29, 2019 meeting:

“BE IT RESOLVED that the Board of Directors of the Brazos River Authority hereby authorizes the General Manager/CEO to contribute up to \$25,000 to the scope of work of the Texas Water Development Board Groundwater-Surface Water Interaction Study to further develop the understanding of the hydrology between groundwater and surface water systems; and

BE IT FURTHER RESOLVED that the General Manager/CEO is authorized to negotiate and execute any required contracts or inter-local agreements with the Texas Water Development Board that are necessary to facilitate the scope of work.”



Brazos River Authority



Brazos

— ★ —
RIVER AUTHORITY