

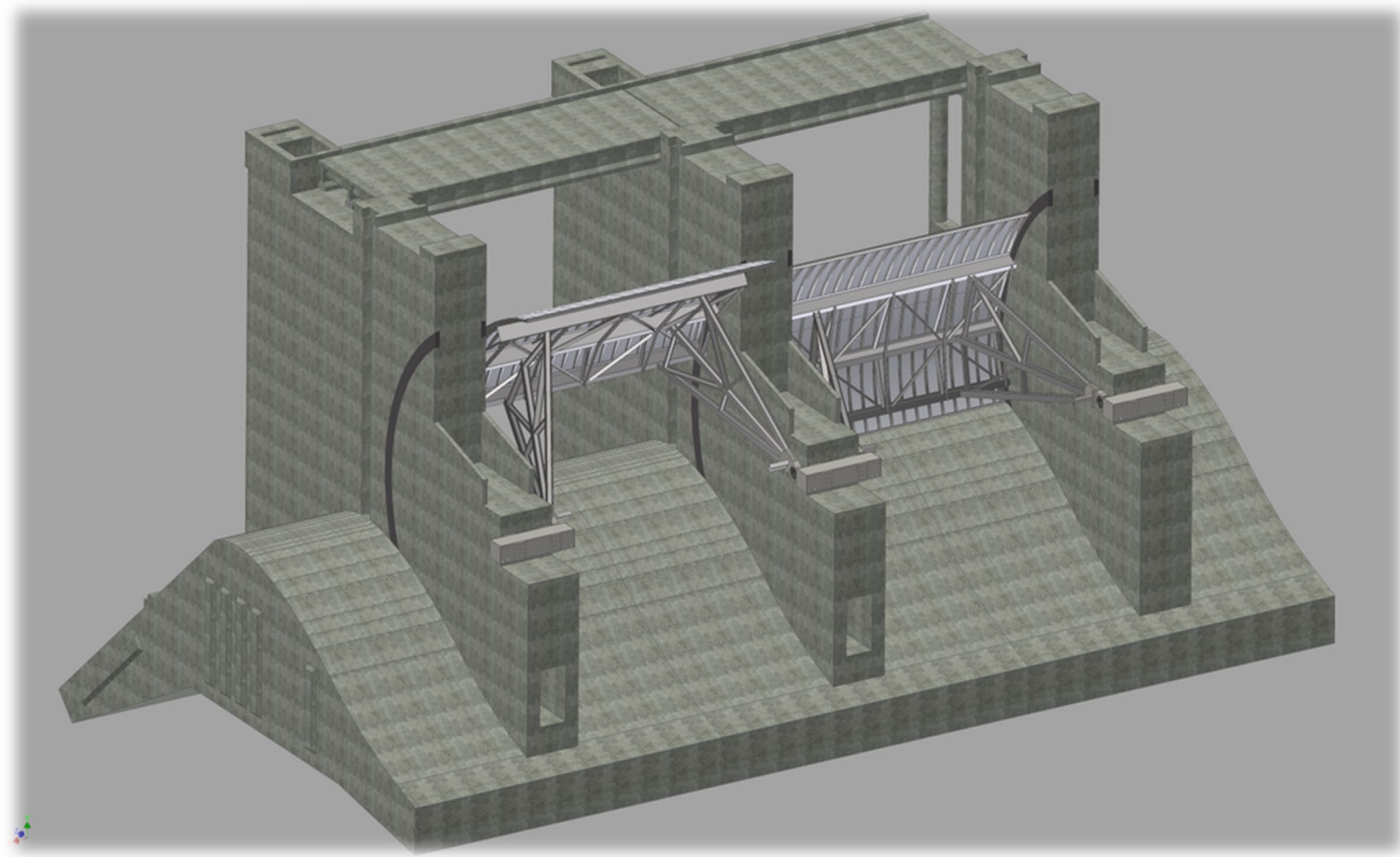


Project Update

***Presented by
Blake Kettler
Technical Services Manager***

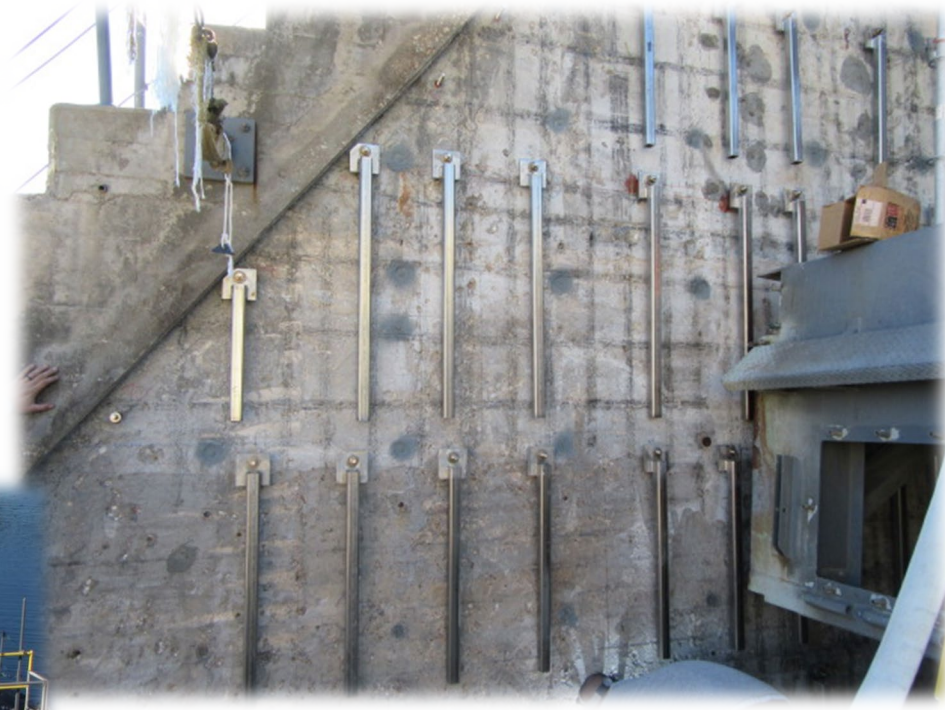
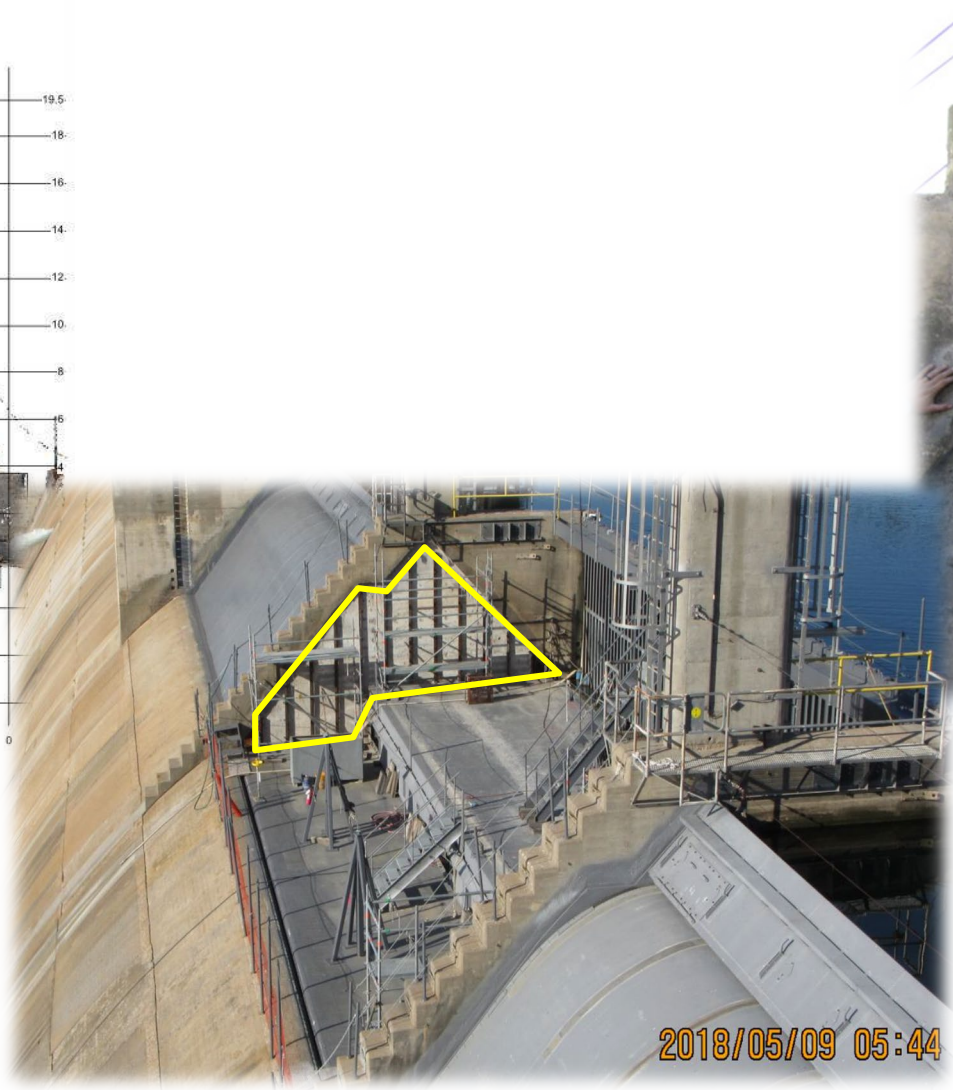
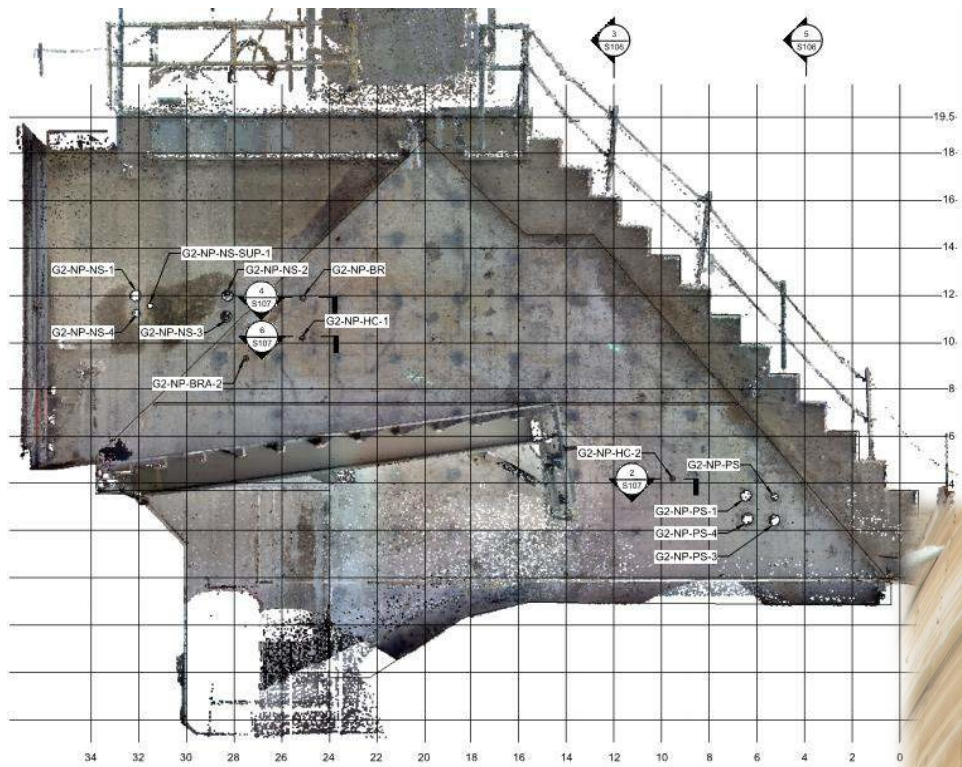


Lake Limestone Improvements



60% Design Submittal Soon

Morris Sheppard Side Seal Plate Improvements



Fabrication and Construction Underway



Spillway Pump and Piping



Request For Proposals Posted



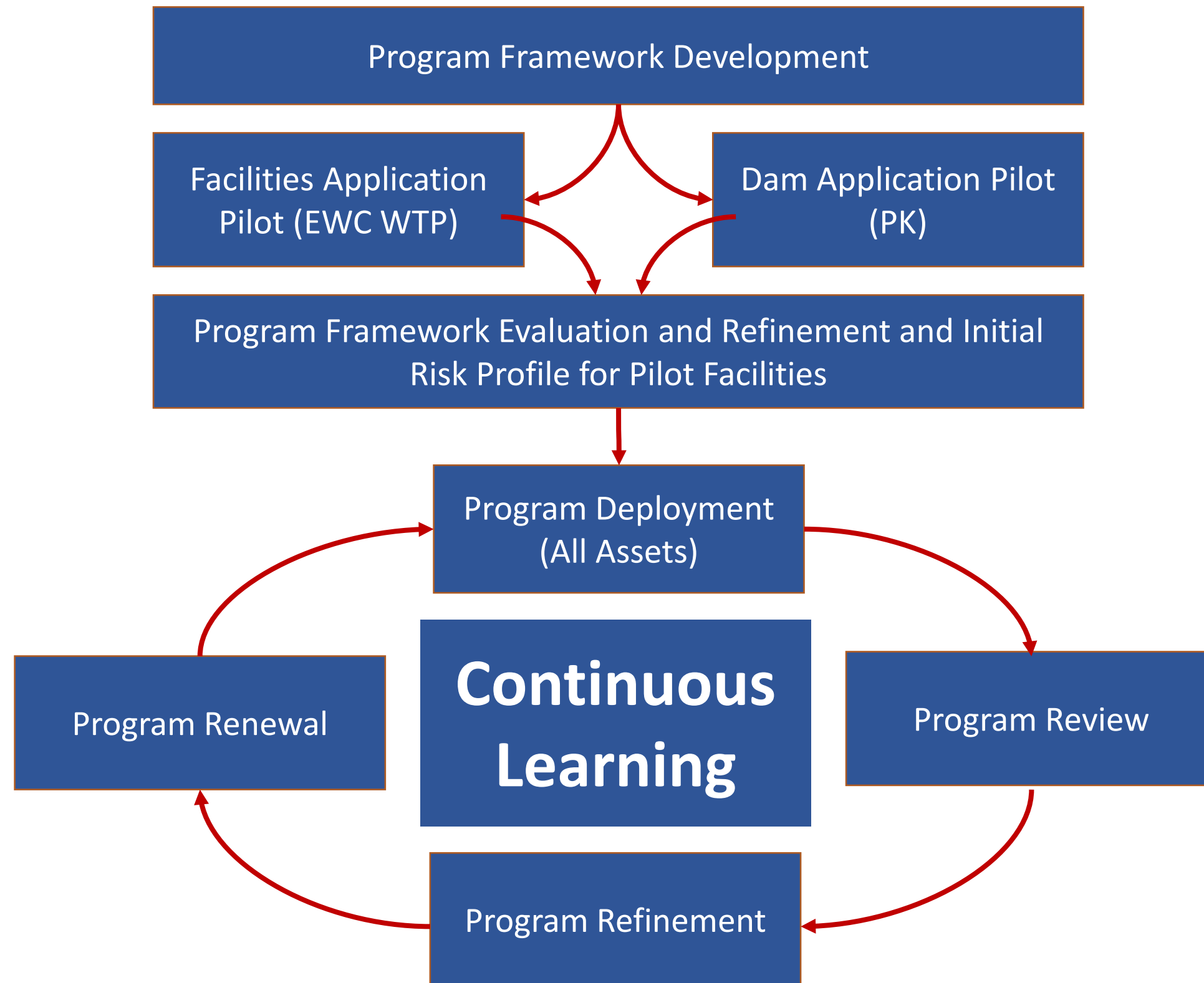
Risk-Based Asset Management Program

MicroMain (Current System)

- **Maintenance Management Software – Tracks asset costs, preventative/demand maintenance, labor tracking, warranty, parts, etc.**

Moving Forward...Risk-Based AMP

- **Implement a risk-based asset management program**
- **Rank assets based on risk (likelihood of failure x consequence of failure x redundancy)**
- **Prioritize rehabilitation replacement projects based upon risk**
- **Develop a long term capital replacement plan**





Integrated Water Resource Plan (IWRP)

Development of a comprehensive Integrated Water Resources Plan

- 1) Leverage advanced planning, modeling, and decision-making techniques to build a plan that addresses potential future demand and operational scenarios.**
- 2) Improve water supply resiliency through integration into BRA's risk management framework.**
- 3) Convey recommendations in a manner that simplifies critical decision making.**
- 4) Assess the incorporation of non-raw water/non-surface water solutions into BRA's primarily raw surface water-based Water Supply System.**
- 5) Engage customers/stakeholders in a transparent and proactive process.**
- 6) Provide information that can integrate into the Regional and State Water Planning process.**



Brazos

RIVER AUTHORITY