



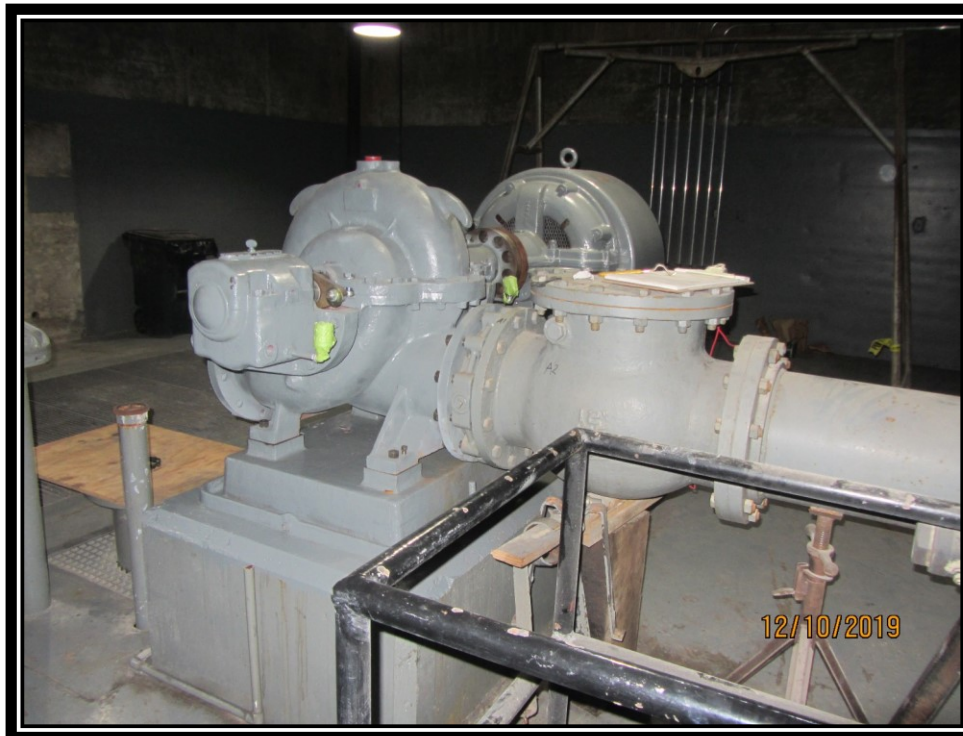
Possum Kingdom Lake Spillway Pump and Piping

***Presented by
Michael McClendon
Upper Basin Regional Manager***



Spillway Pump & Piping

- **Spillway piping runs beneath the Morris Sheppard Dam spillway.**
- **Pressurized water is forced into the gate chamber to raise the gate during low lake elevations.**

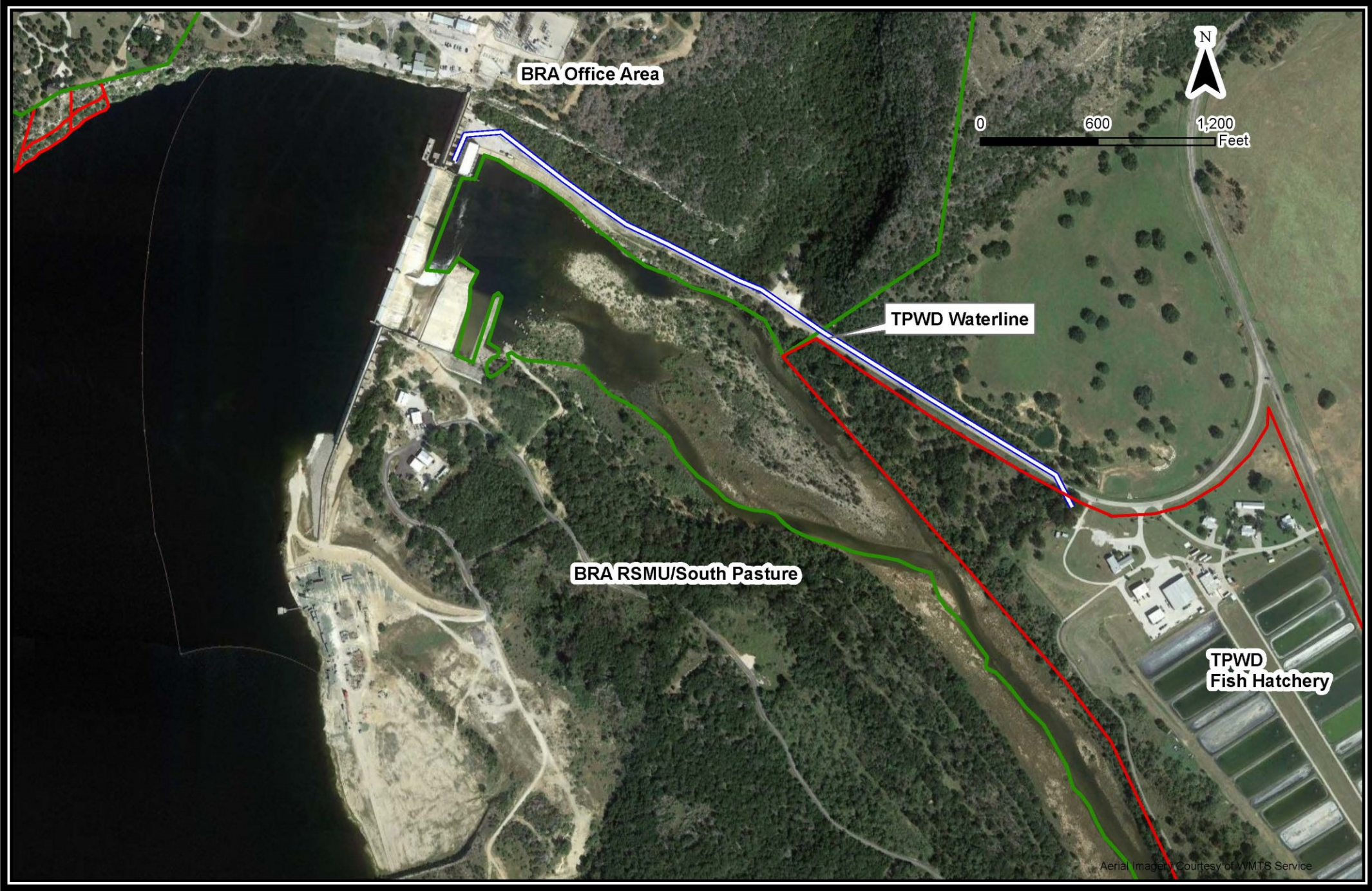




Spillway Pump & Piping

- **The spillway pump is needed to provide pressurized water to the gate chambers.**
- **Utilized to lift gates when the lake level is below approximately 995 msl.**

Texas Parks and Wildlife Fish Hatchery





Background and Objective

- **KCI Technologies, Inc. was selected to provide engineering services.**
- **Project will result in new piping beneath the spillway.**
- **Installation of refurbished or new pump**
- **Project will retain ability to provide water to the TPWD Hatchery for their operations.**
- **A successful project will allow the BRA to test or maintain gates at low reservoir elevations.**



The following resolution is presented for consideration to the Board of Directors of the Brazos River Authority for adoption at its October 26, 2020 meeting:

“BE IT RESOLVED that the Board of Directors of the Brazos River Authority hereby authorizes the General Manager/CEO to negotiate and execute a contract with KCI Technologies, Inc. to provide engineering services for the Possum Kingdom Lake Spillway Pump and Piping Project in an amount not to exceed \$762,000; and,

BE IT FURTHER RESOLVED that the Board of Directors of the Brazos River Authority hereby authorizes the General Manager/CEO to execute an Interlocal Agreement with the Texas Parks and Wildlife Department to facilitate this project.”



Brazos

RIVER AUTHORITY