



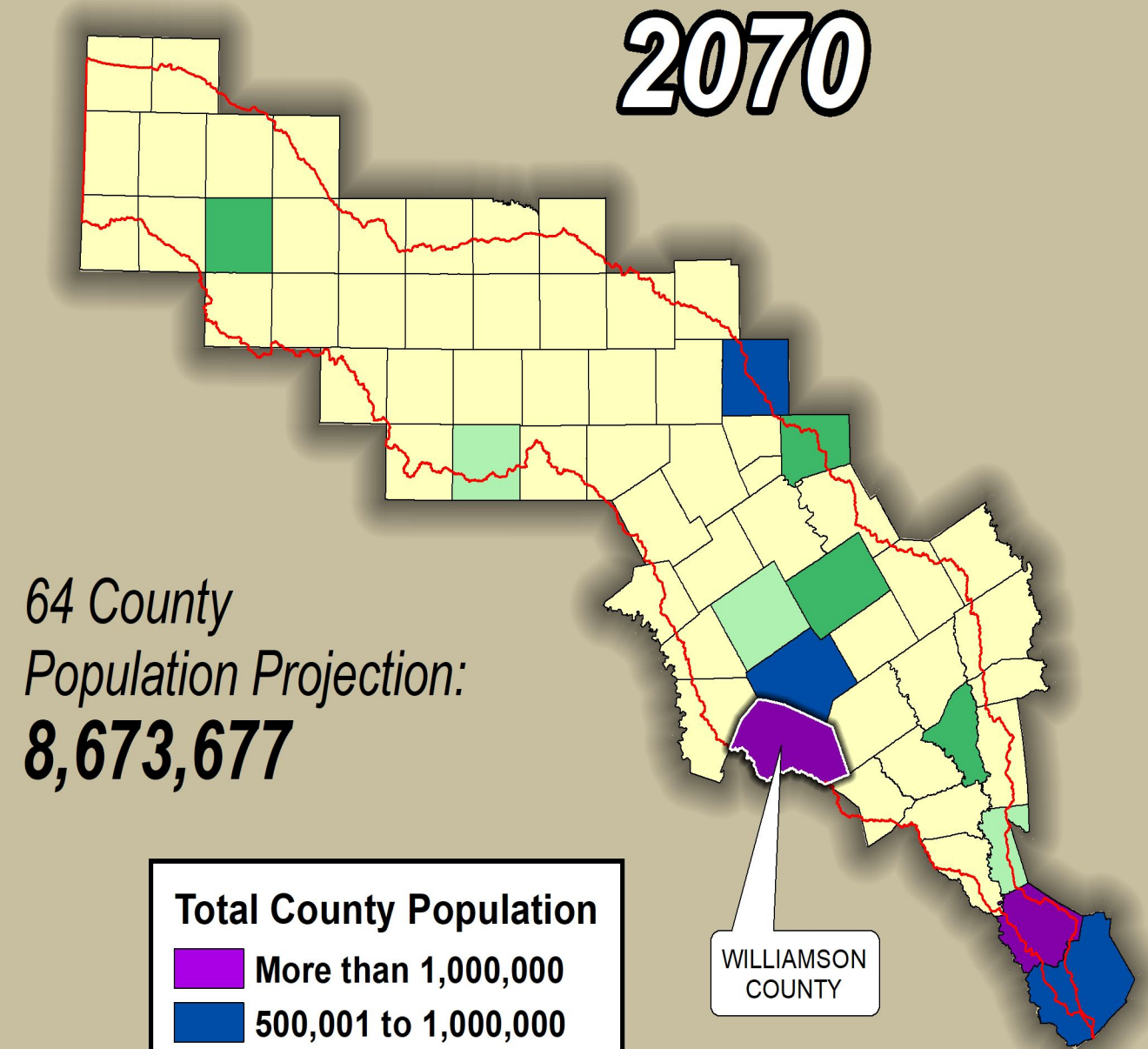
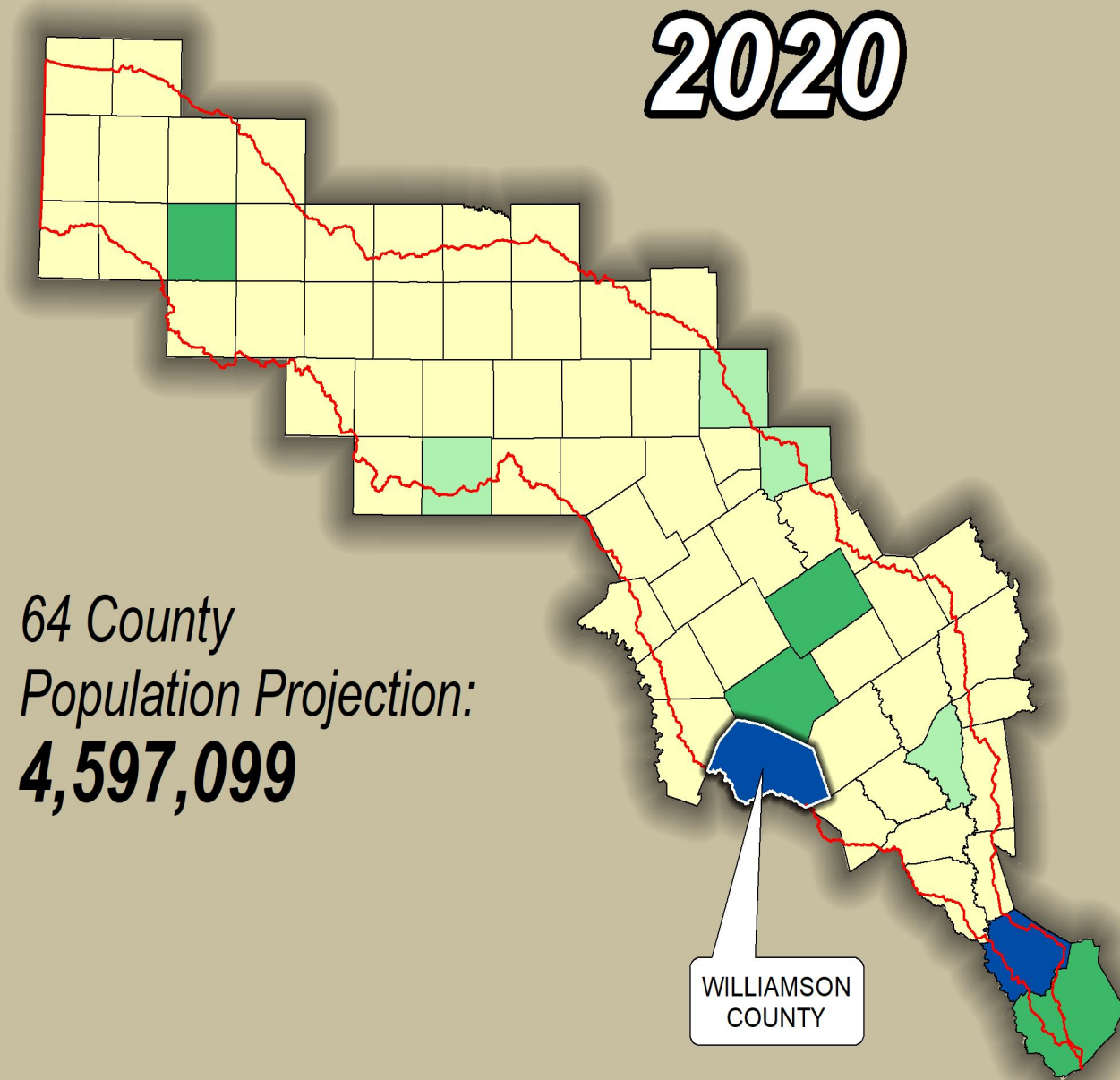
# ***Williamson County Water Resource Evaluation MOU***

***Presented By  
Jon King***

***Special Projects & Strategic Initiatives Manager***

# Brazos Basin Population Growth

**Projected Increase: 4,076,578**



### Total County Population

- More than 1,000,000
- 500,001 to 1,000,000
- 250,001 to 500,000
- 100,001 to 250,000
- Less than 100,000

Prepared by

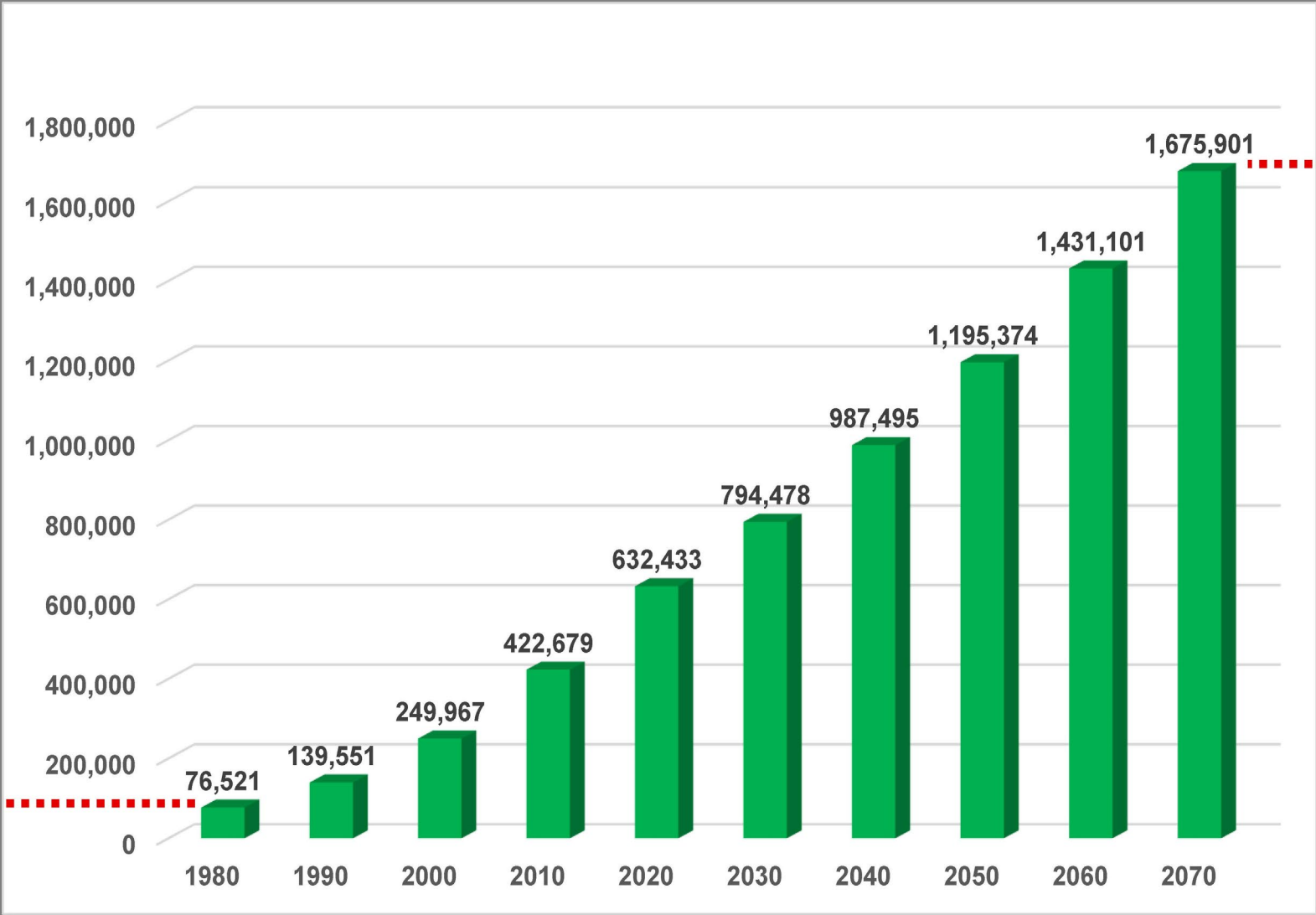


IGCR\Population\CountyPop2020to2070-9x16-2017-Wmson.mxd

Source: 2017 State Water Plan, Texas Water Development Board

# Williamson County Population Growth

1980  
76,521



2070  
Projection  
1,675,901

- Increase of almost 1.6 million people
- Averaging over 170,000 each decade



# ***Memorandum of Understanding***

## **Participants**

**Brazos River Authority**

**City of Georgetown**

**City of Round Rock**

## **Agreement**

**Jointly pursue a collaborative water resource development and planning project**

## **Outcomes**

**Define needs**

**Identify potential sources**

**Determine viable projects**



# Brazos

---

RIVER AUTHORITY