



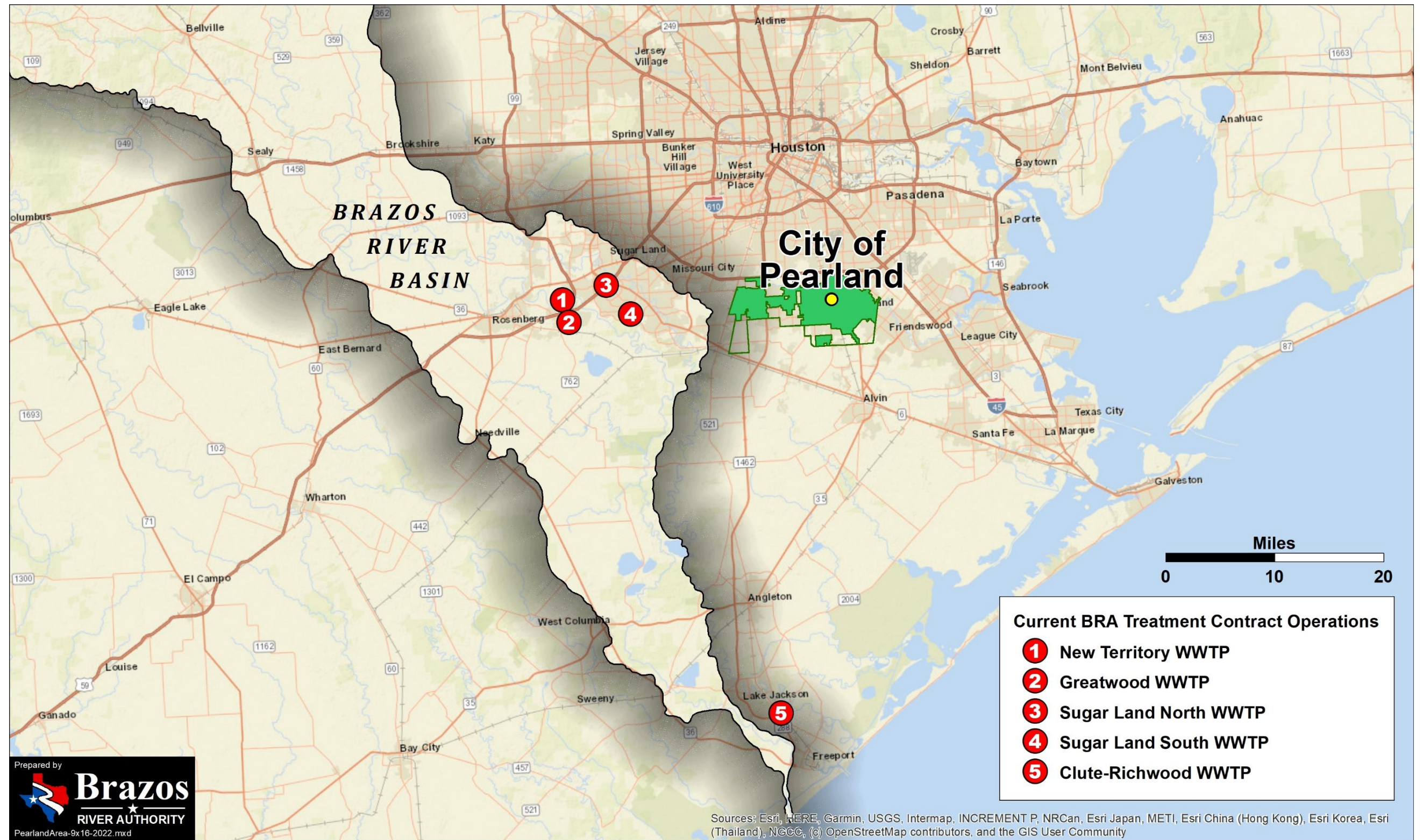
# ***Interim Operations Assistance for City of Pearland Wastewater Treatment***

***Presented by***

***Brad Brunett***

***Central and Lower Basin Regional Manager***









# ***Summary***

- **City reached out to us on May 5 based on recommendation from Sugar Land**
- **They have five wastewater plants ranging in size from about one – six million gallons per day**
- **Recently discovered some unacceptable issues that need addressing**
- **Requesting interim help from BRA while a long-term plan/solution is developed**
- **BRA to provide operations oversight, data review, review of standard operating procedures, and provide feedback and recommendations to City Management**
- **City to provide for day-to-day operations and staffing**
- **Primary BRA staff involved will be our Treatment Operations Superintendents and our Chief Operators at Sugar Land and Clute; time expected to average four hours/day**
- **Interim agreement developed with a four-month term that may be extended**
- **BRA to recover costs including labor, benefits, and travel expenses**
- **All invoiced costs will include a five percent management fee**



# ***Resolution***

**“BE IT RESOLVED that the Board of Directors of the Brazos River Authority hereby approves the General Manager/CEO’s execution of an interim operations agreement to temporarily assist the City of Pearland with operation of its wastewater treatment plants.”**



Brazos River Authority



**Brazos**



**RIVER AUTHORITY**