



# ***Allens Creek Reservoir Project Update***

***Presented by  
Rachel Lane  
Program Manager***



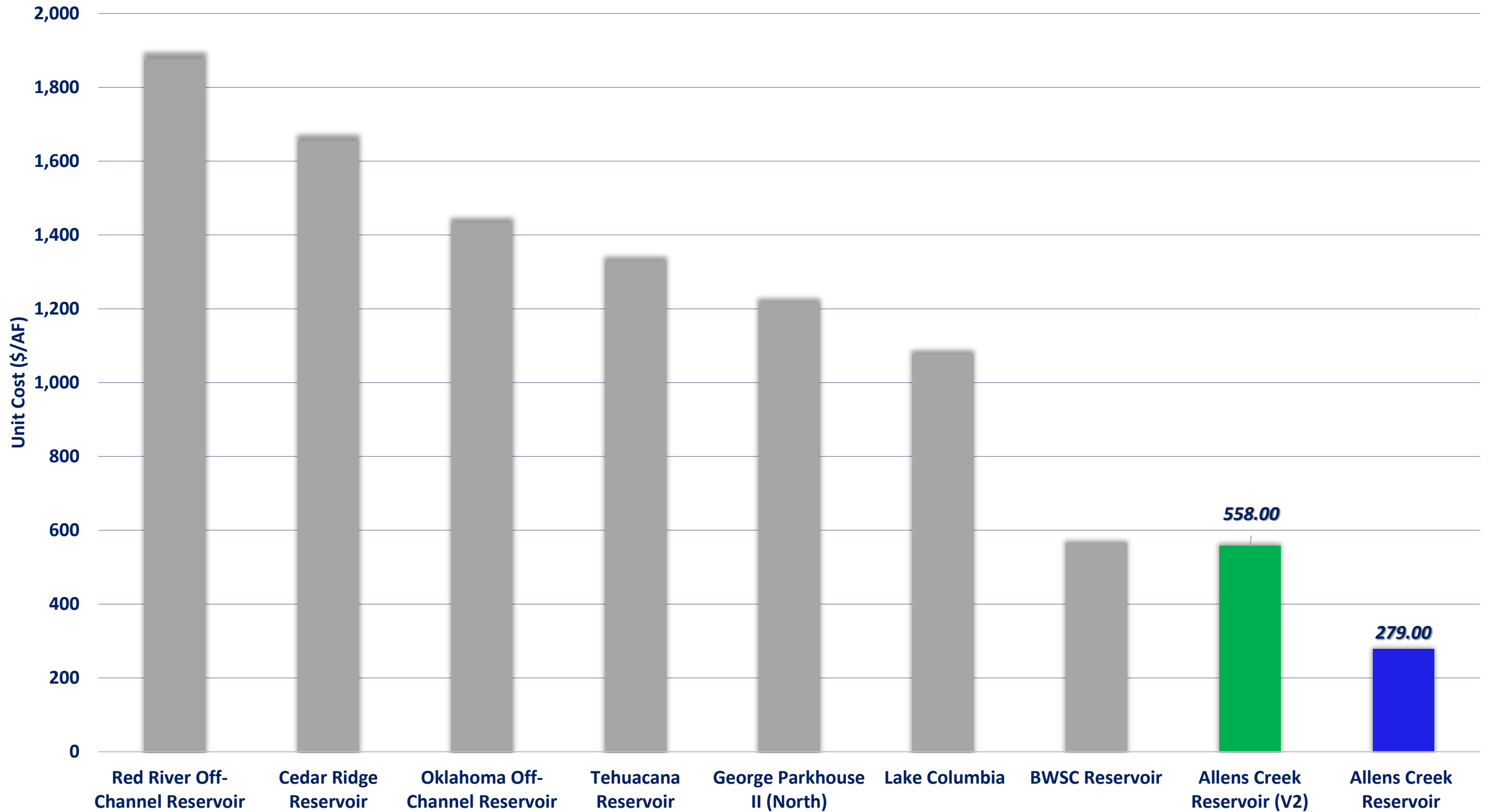
**Goal:** To advance the Allens Creek Reservoir Project with speed, efficiency, and accountability to meet long-term water supply needs while managing risk and costs.

***Priorities:***

- *Regulatory Certainty*
- *Cost Stewardship*
- *Risk Management*
- *Stakeholder Alignment*
- *Schedule Acceleration*
- *Execution Efficiency*
- *Supply Sufficiency*

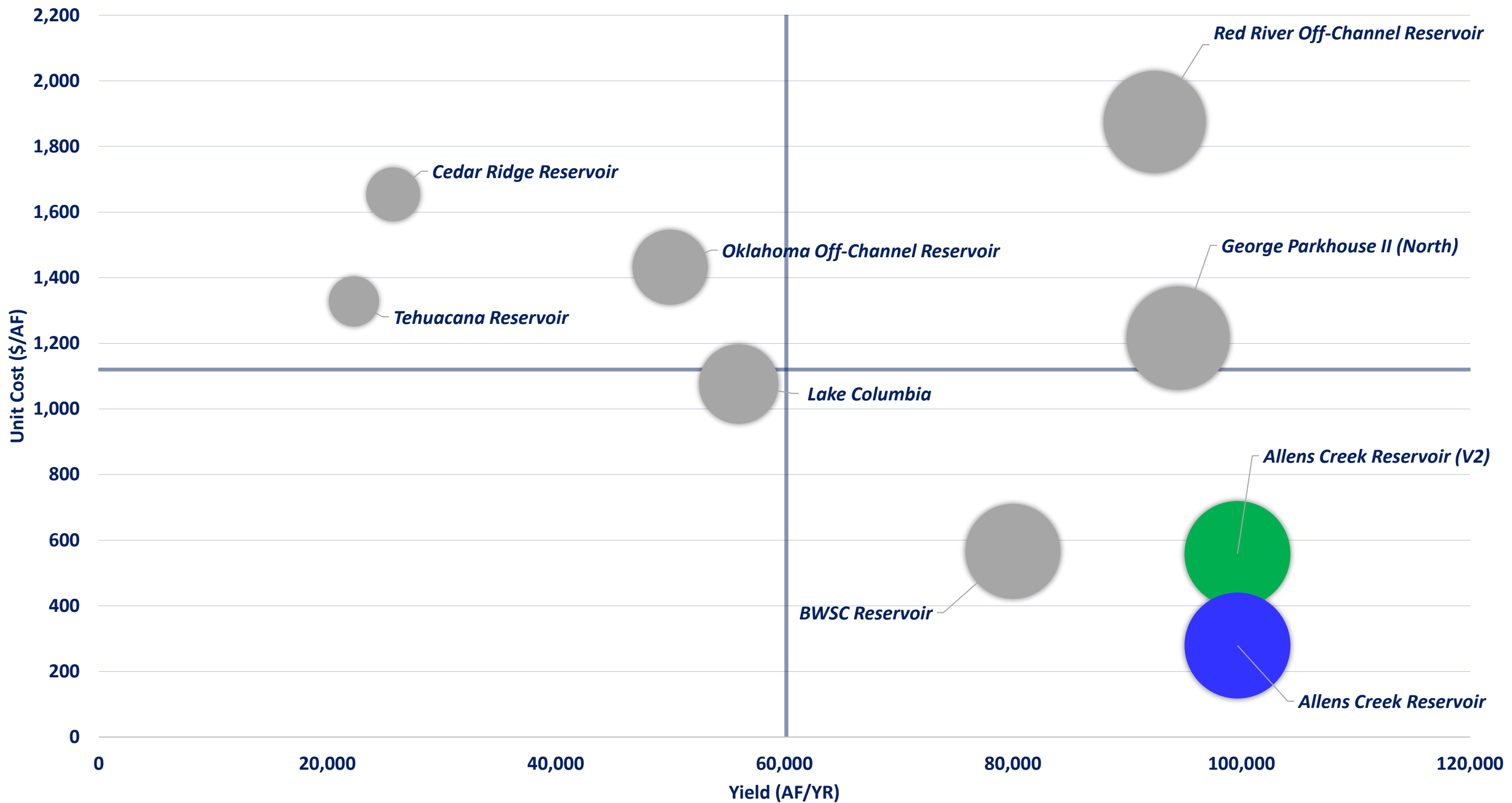


### Comparison of Example RWP Reservoir Projects Cost per Acre Foot



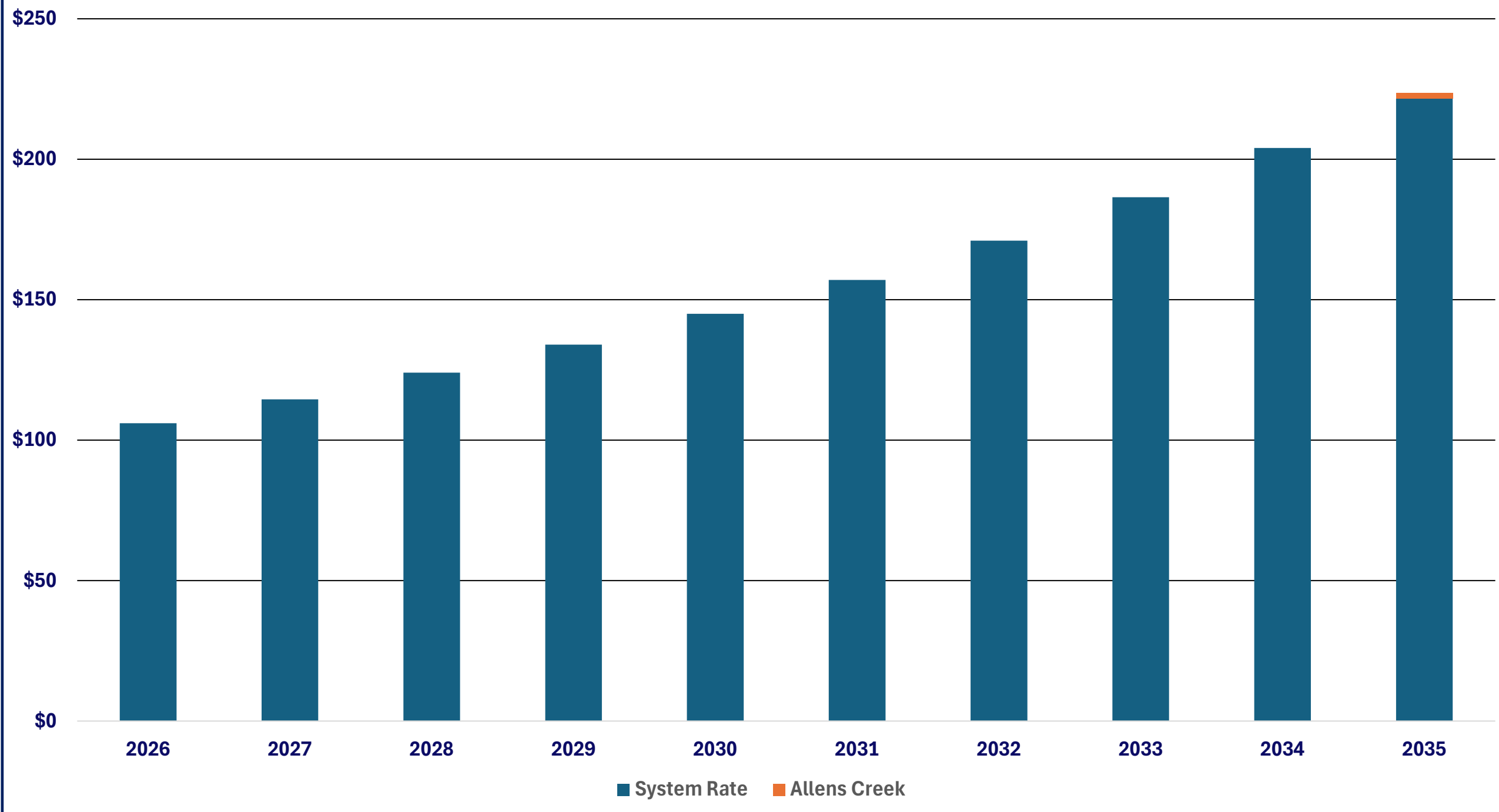


**Comparison of Regional Water Plan Example Reservoir Projects - Unit Cost and Yield**





### Effect of Allens Creek Reservoir Project on the System Rate





# ***Agenda***

- **Project Status**
- **Execution Plan**
- **Contracting Strategy**
- **Authorization**



# ***Project Status***



# ***Current Work Update***



**SURVEY AND  
UTILITY  
CORRIDOR STUDY**



**GEOMORPHIC  
STUDY**



**PRELIMINARY  
CULTURAL AND  
ENVIRONMENTAL  
STUDY**



**PRELIMINARY  
GEOTECHNICAL  
INVESTIGATION**

*View south along eastern  
boundary – FM 1458*





# Project Status

- ✓ Final reporting
- ✓ Key metrics

## Upcoming:

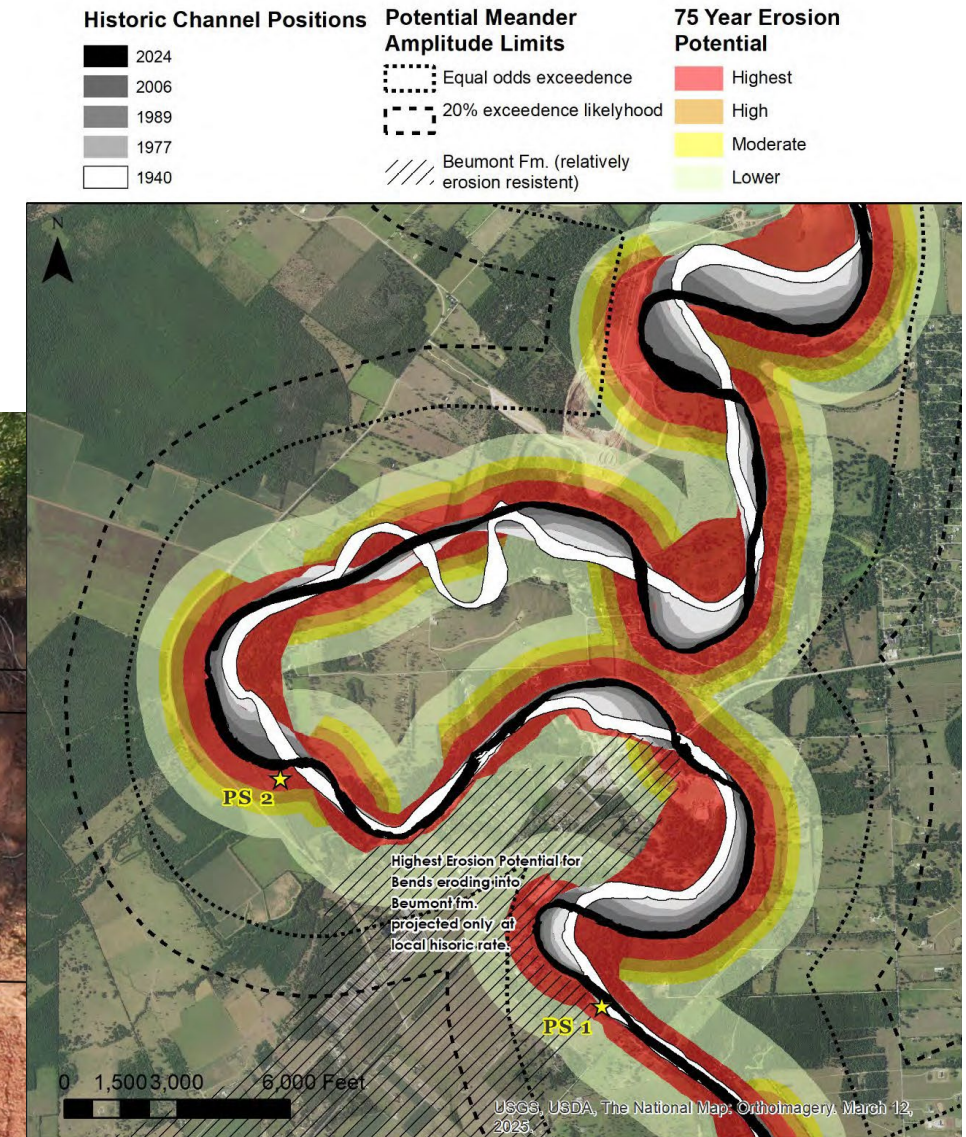
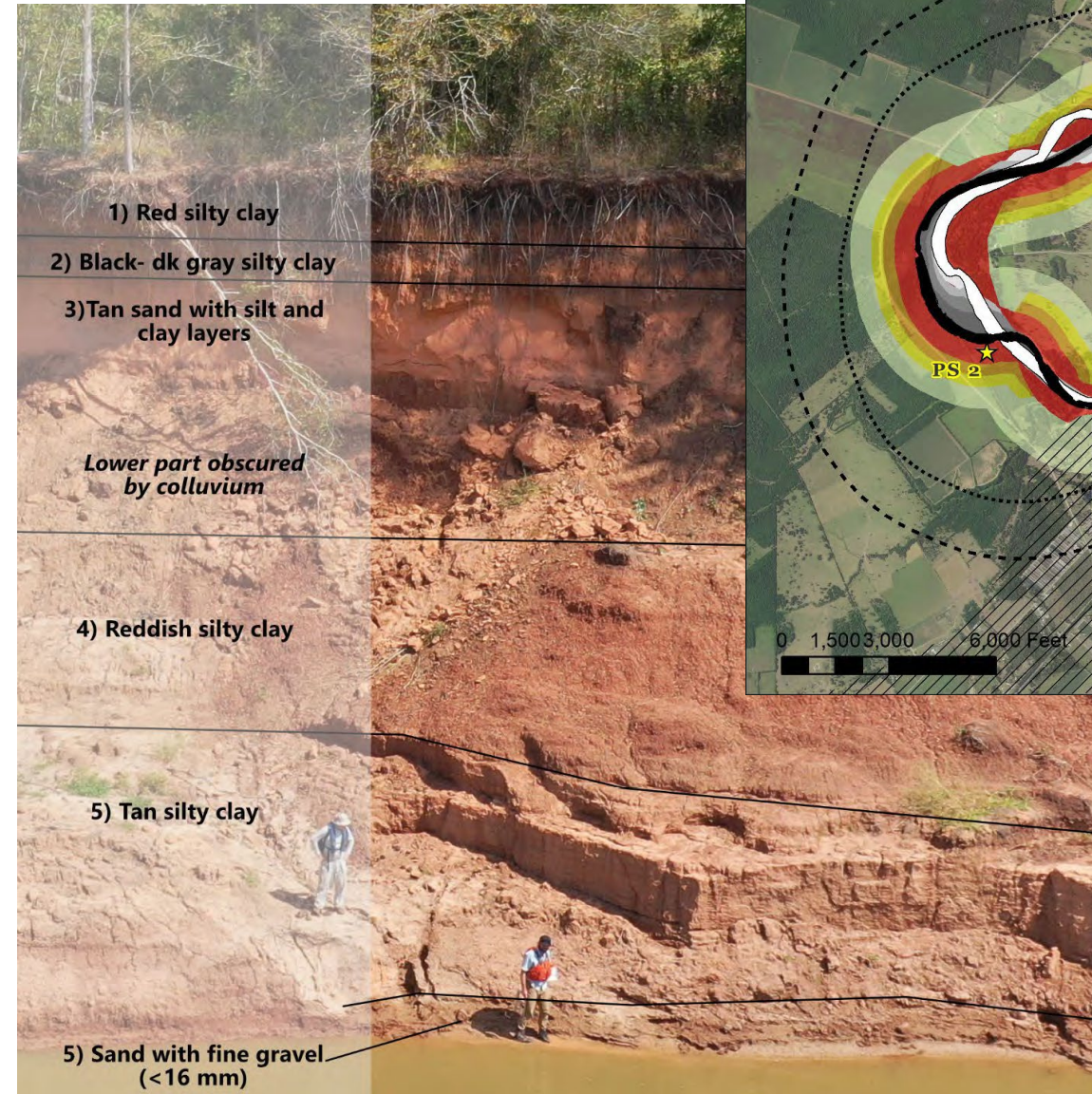
- Detailed studies
- Alternatives analysis
- Permitting requirements

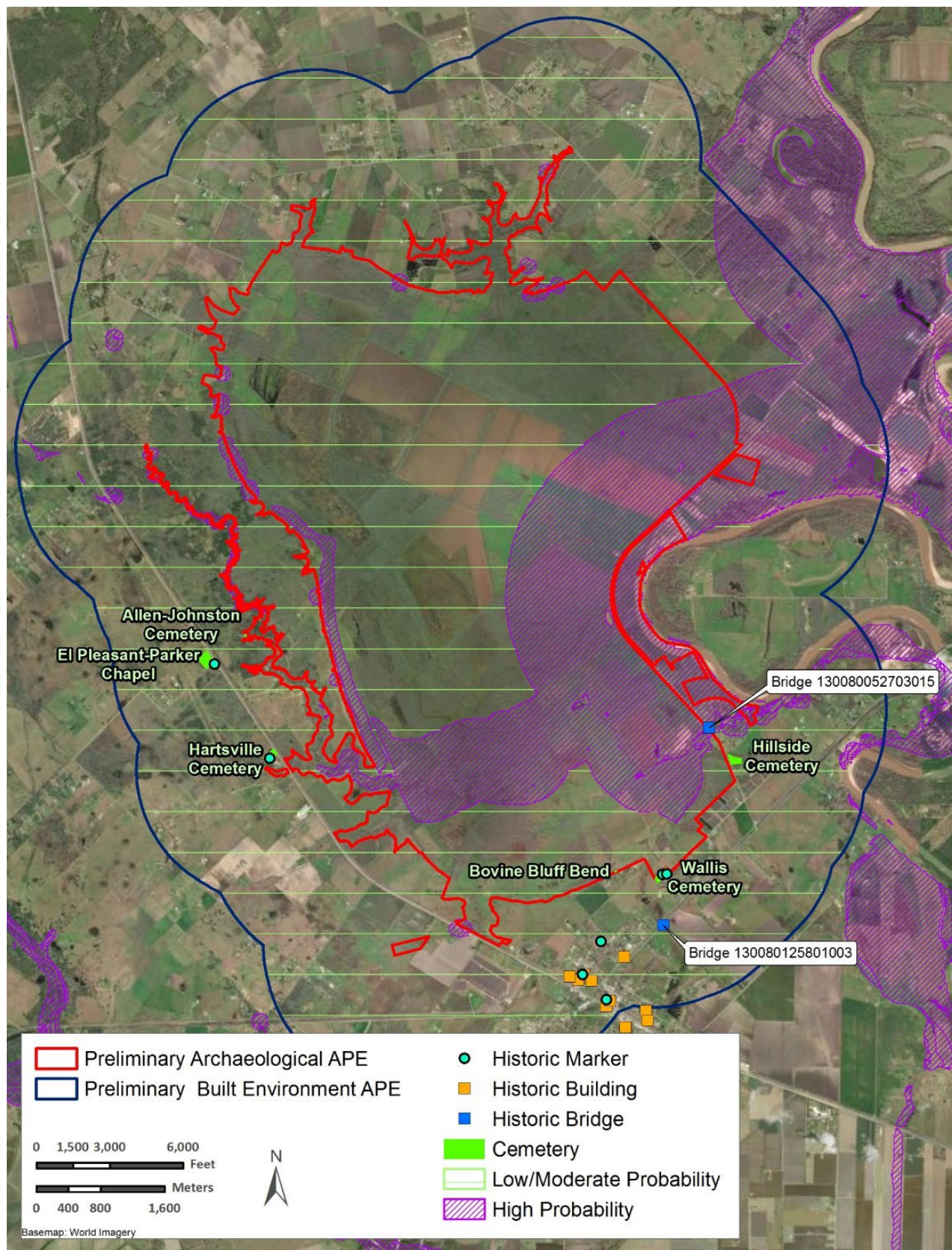




# Meander cutoff

<b>Evaluation</b>	<b>Location of the pump station</b>
<b>Method</b>	Geomorphology and sediment transfer studies
<b>Inform</b>	Determine need for channel stabilization measures
<b>Next</b>	<i>Consider costs in Alternatives Analysis</i>





# Cultural Resources

Evaluation	Extent of cultural resource sites
Method	Archaeological field reconnaissance and review 1970s records
Inform	Cultural Resource Management approach
Next	<i>Texas Antiquities Permit</i>



# Wetland Delineation

<b>Evaluation</b>	<b>Extent of streams and wetlands</b>
<b>Method</b>	Desktop and field survey
<b>Inform</b>	Proposed wetland delineation approach
<b>Next</b>	<i>Initiate coordination with regulatory agencies</i>



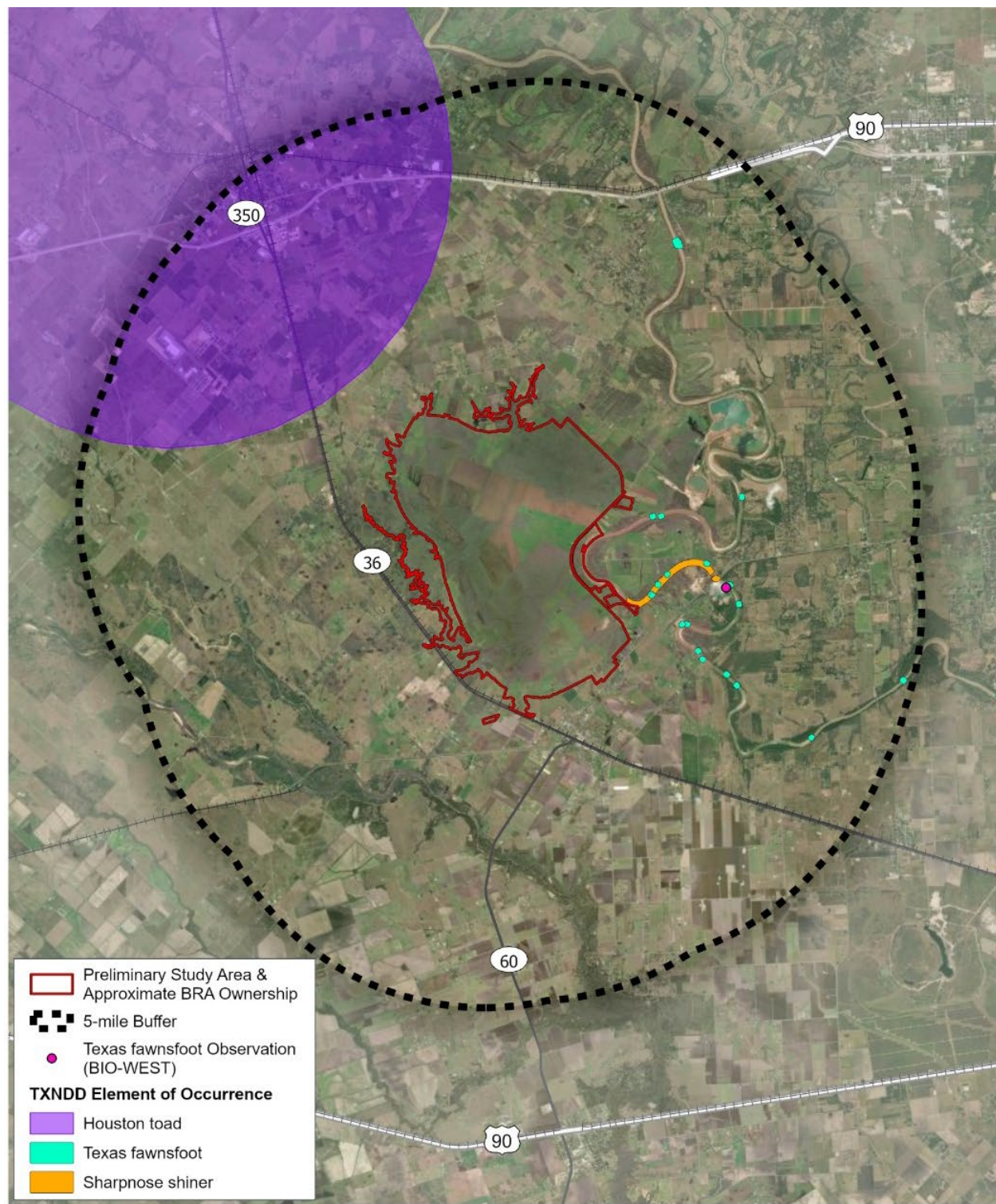
Preliminary Review of and Approach to Delineation of Potential Waters of the U.S., Including Wetlands for the Proposed Allens Creek Reservoir Project

Austin County, Texas



By: Laura Duffie, AWB, PWS; Ricky Wilson, PWS; and James Thomas, CWB, SPWS

February 2026





 0 12,000 ft 
 TEXAS NATURAL DIVERSITY DATABASE (TXNDD) Figure 5

DATA SOURCES: TXNDD, TOWN, 2025; BIO-WEST OBSERVATION: 10/10/2024; AERIAL: EARTHSTAR GEOGRAPHICS, 2025  
 \\INTRANET\HDR\DR\GIS\CENTRAL\ISAN\PROJECTS\GANNET\_FLEMING\_INC\_918059\BRA\_ALLENS\_CREEK\_DATA\_10431225\7\_2\_WIP\APRX\FIGURES\_TE\_APRX DATE: 3/5/2026

# Biological Assessments

<b>Evaluation</b>	<b>Potential for impacts to protected species</b>
<b>Method</b>	Desktop and field survey
<b>Inform</b>	Occurrence of protected species
<b>Next</b>	<i>Consider impacts in Alternatives Analysis; required permits</i>



# Geotechnical study

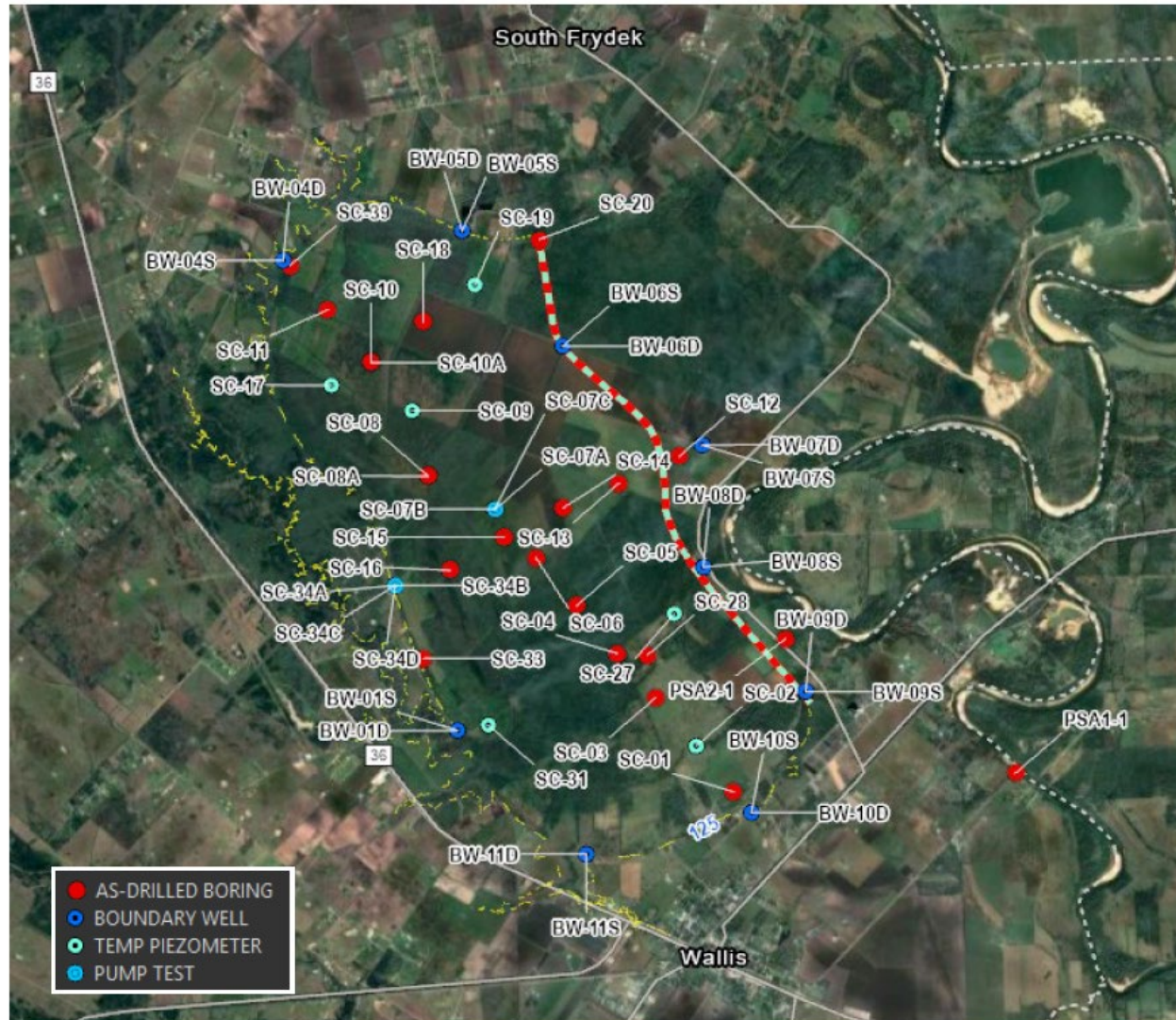


Figure 7- As-Drilled Boring Locations

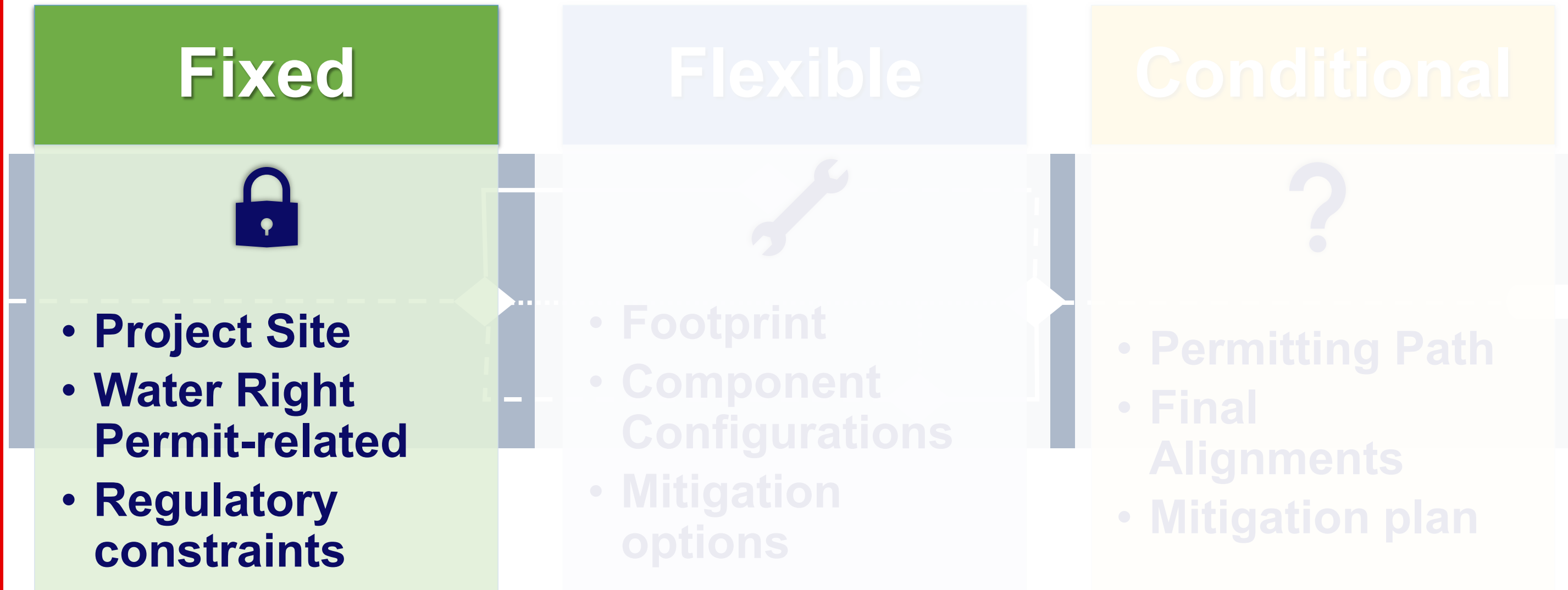
<b>Evaluation</b>	<b>Soil suitability for project</b>
<b>Method</b>	Initial geotechnical survey
<b>Inform</b>	Locate suitable soils for embankment and identify need for future evaluation
<b>Next</b>	<i>Targeted geotechnical investigations</i>



# ***Execution Plan***

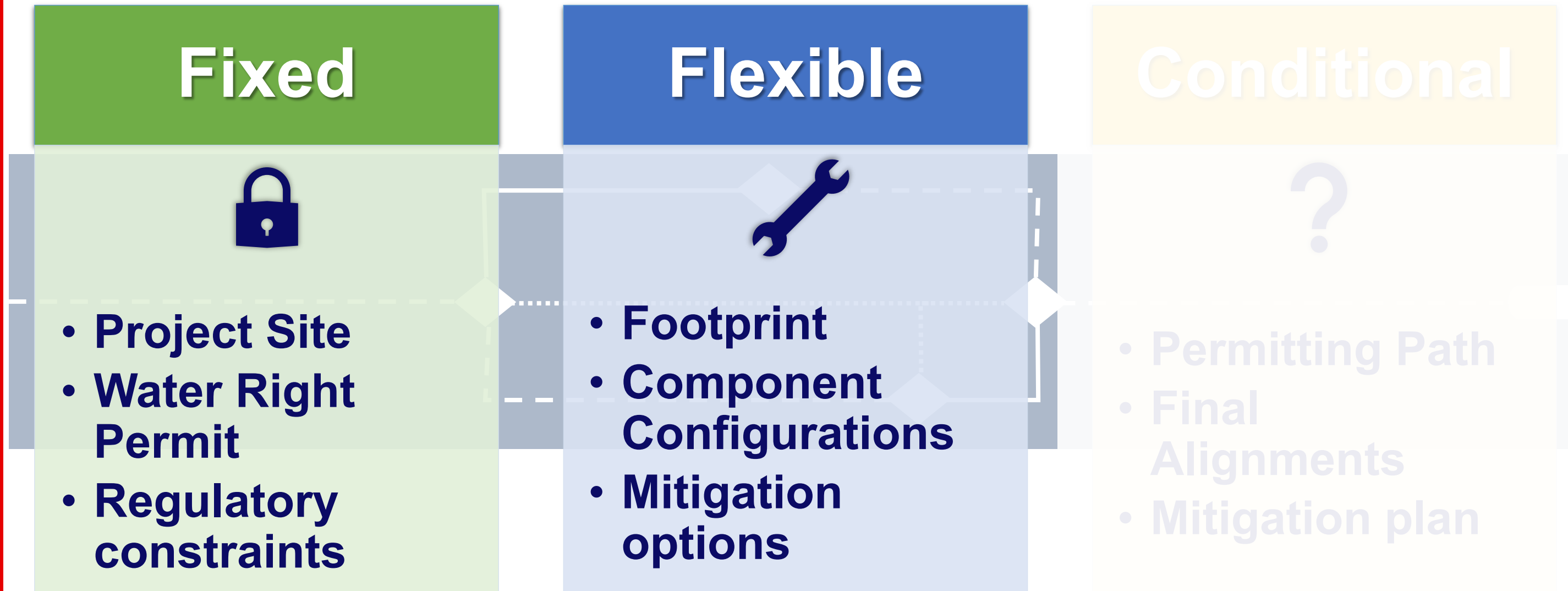


# Project Decision Framework



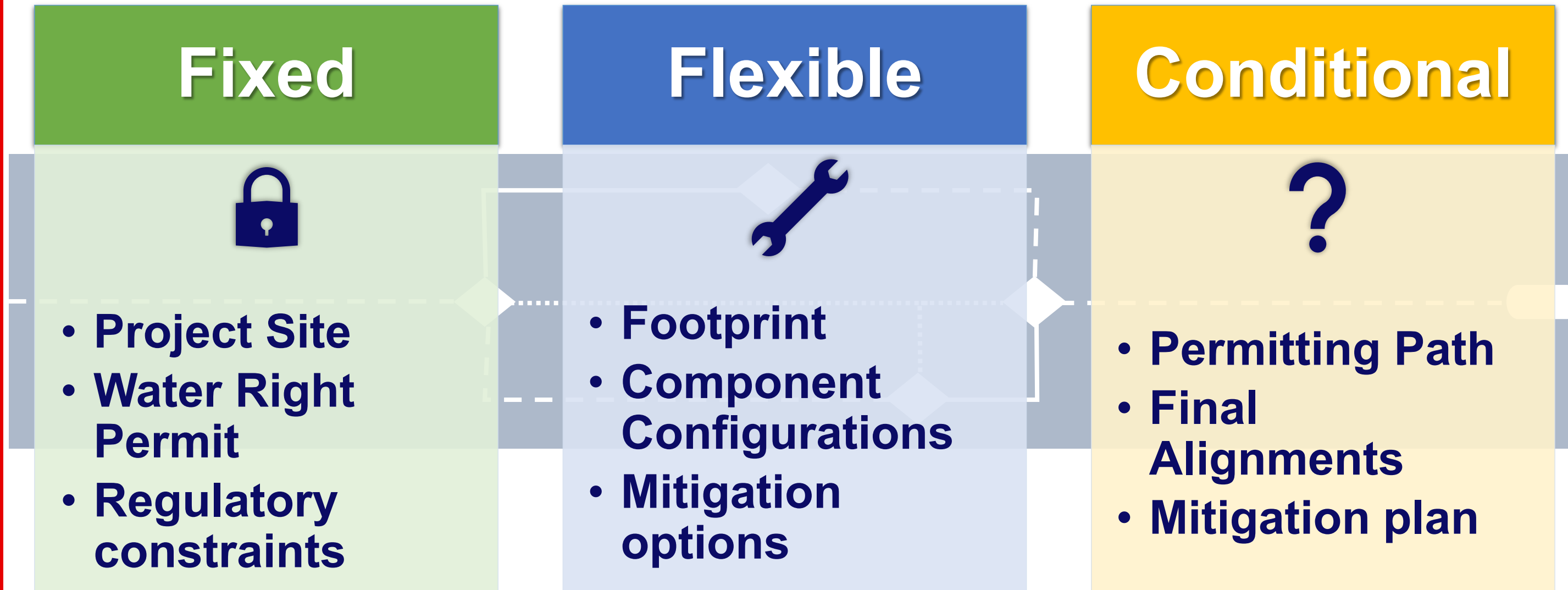


# *Project Decision Framework*



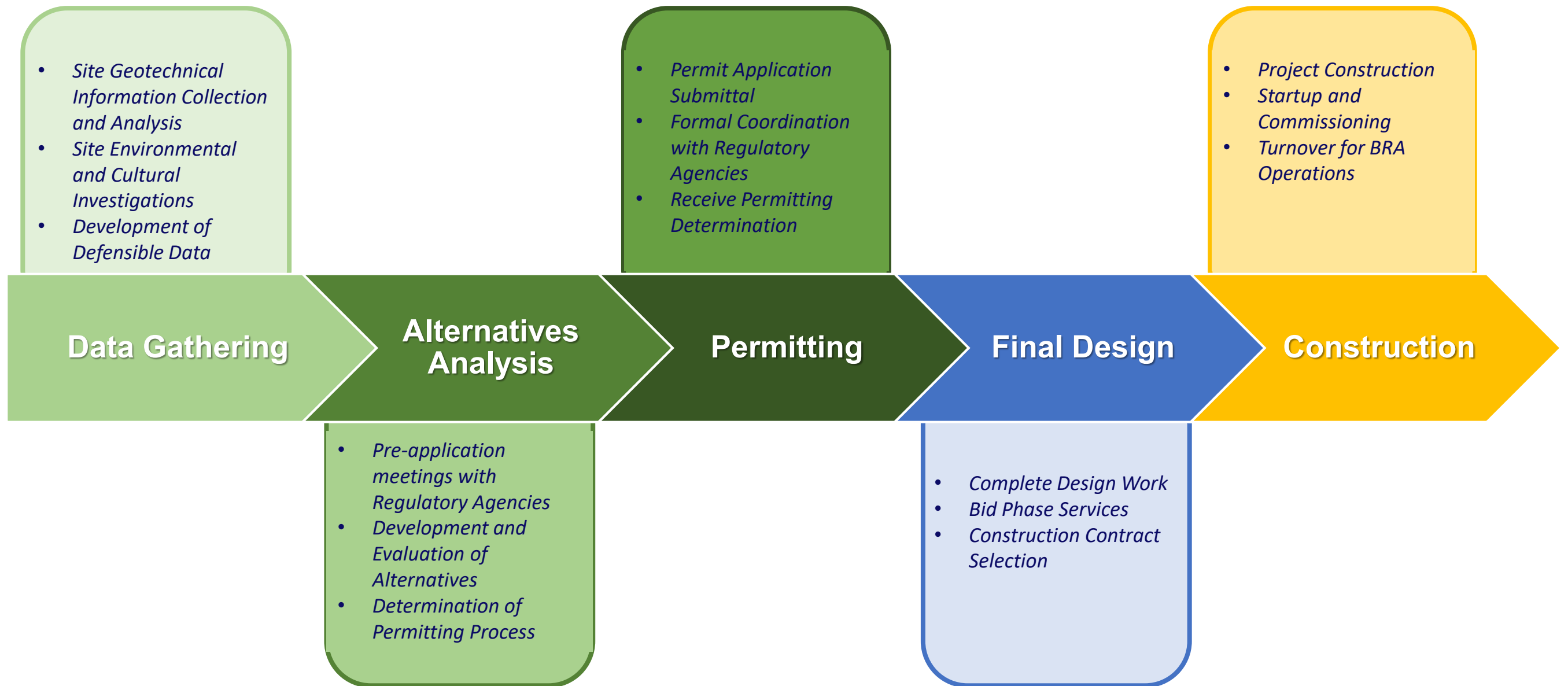


# *Project Decision Framework*



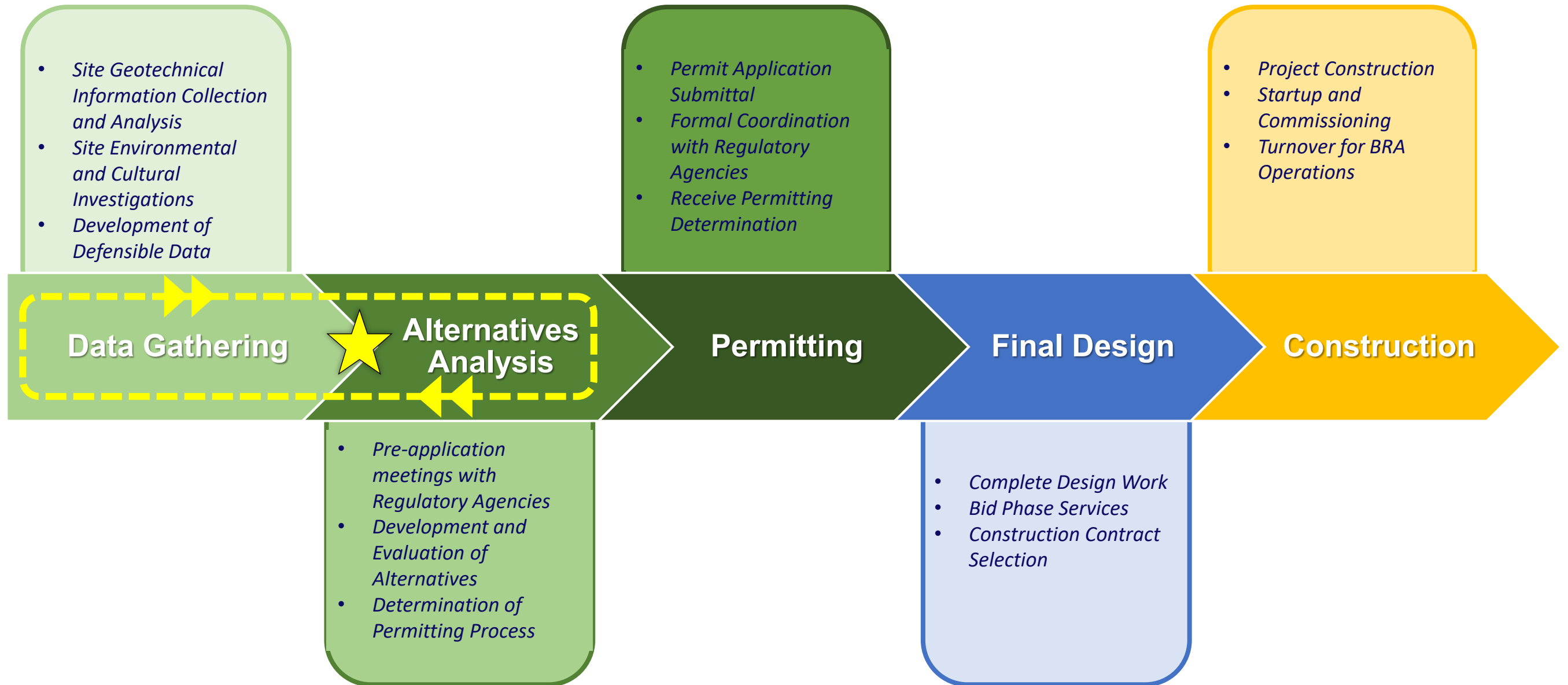


# Project Phases – Moving Forward



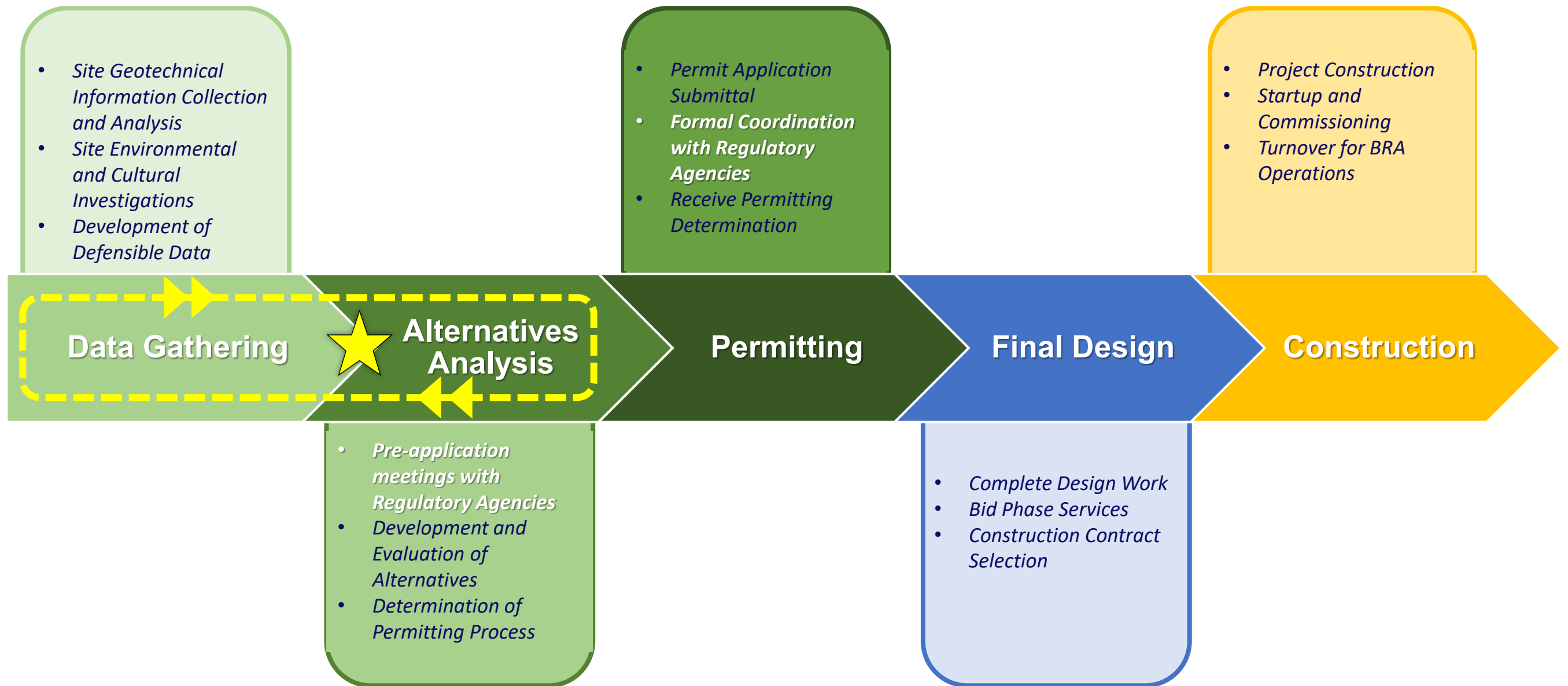


# Project Phases – Moving Forward





# Project Phases – Moving Forward





# Project Phases – Timing



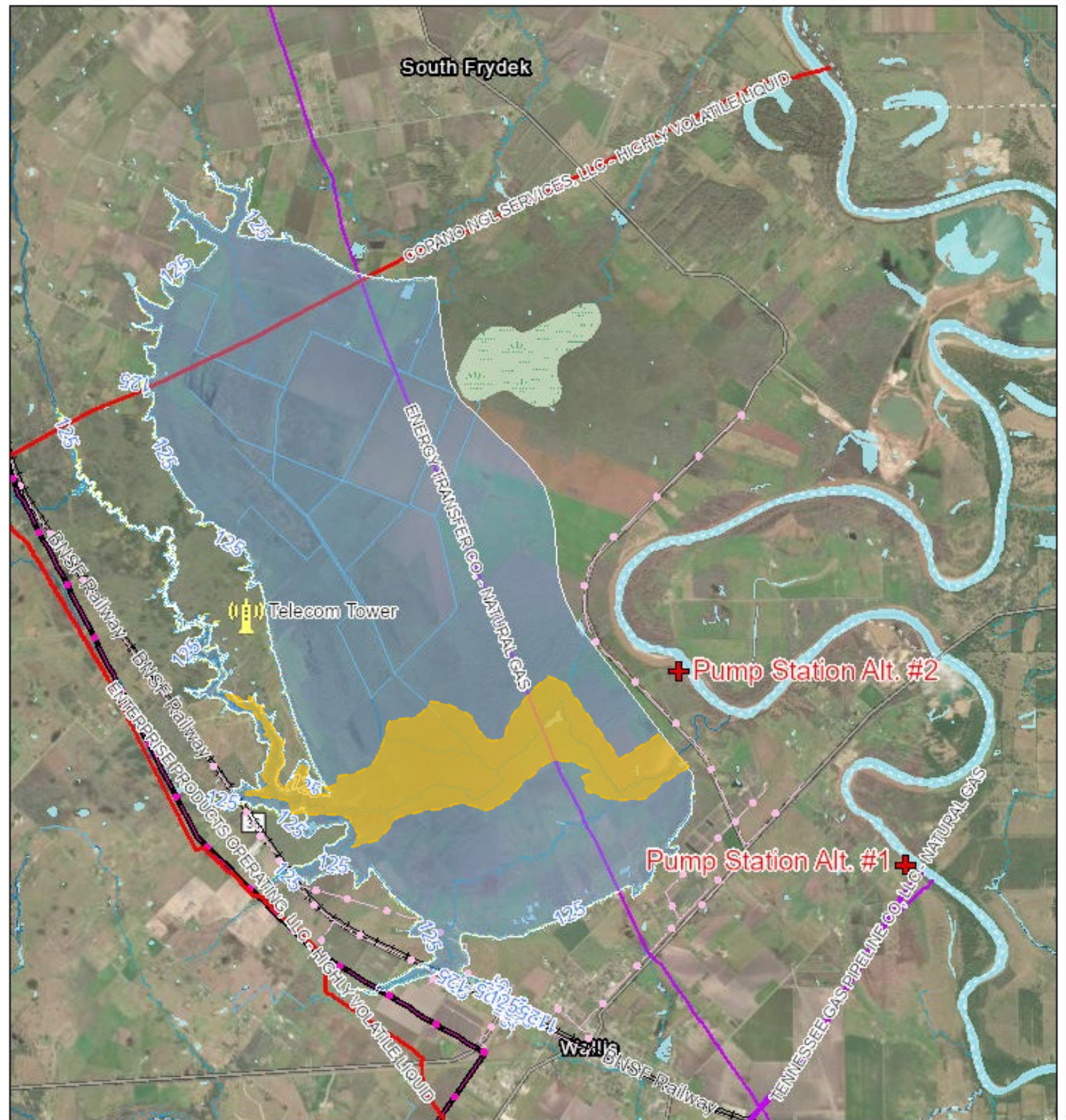
- Embankment configuration
- Pump Station Location
- Pipeline relocations
- Mitigation needs
- Taking advantage of regulatory opportunities/reform

**\*focus efficiency efforts**



# Project Drivers

- Water Rights Permit
- Allens Creek
- Location of Pump Station
- Existing Pipelines
- Cultural Resources





# ***Contracting Strategy***



# ***Contracting Strategy Overview***

## **Stewardship**

- **Commitment to perform entire project**
- **Annual BOD review and authorizations**
- **Protective contractual provisions**

## **Flexibility**

- **Provisions to handle uncertainty**
- **Flexibility to adjust tasking annually**
- **Off-ramps if assumptions materially change**



# ***Contracting Strategy - Tasks***

## **Category 1 – Permitting**

- **Reservoir Configuration Alternatives and Analysis**
- **Federal and State Water Operations Analyses**
- **Field Investigations**
- **Conceptual Design**
- **Federal Permit Application Development**
- **Coordination with State and Local Regulatory Agencies**

## **Category 2 – Project Design**

- **Federal and State Agency Design Coordination**
- **Project Design Services**
- **Bidding Phase Services**
- **Pre-Construction Permit Services**

## **Category 3 – Construction**

- **Permitting and Environmental Monitoring Services**
- **Construction Contract Administration Services**
- **Construction Phase Engineering Services**
- **Resident Project Representative Services**
- **Project Startup and Commissioning Services**



# ***Contracting Strategy - Tasks***

## **Category 1 – Permitting**

- **Reservoir Configuration Alternatives and Analysis**
- **Federal and State Water Operations Analyses**
- **Field Investigations**
- **Conceptual Design**
- **Federal Permit Application Development**
- **Coordination with State and Local Regulatory Agencies**

**\$84 million**

## **Category 2 – Project Design**

- **Federal and State Agency Design Coordination**
- **Project Design Services**
- **Bidding Phase Services**
- **Pre-Construction Permit Services**

**\$65 million**

## **Category 3 – Construction**

- **Permitting and Environmental Monitoring Services**
- **Construction Contract Administration Services**
- **Construction Phase Engineering Services**
- **Resident Project Representative Services**
- **Project Startup and Commissioning Services**

**Based on approved formula  
with agreed rates**



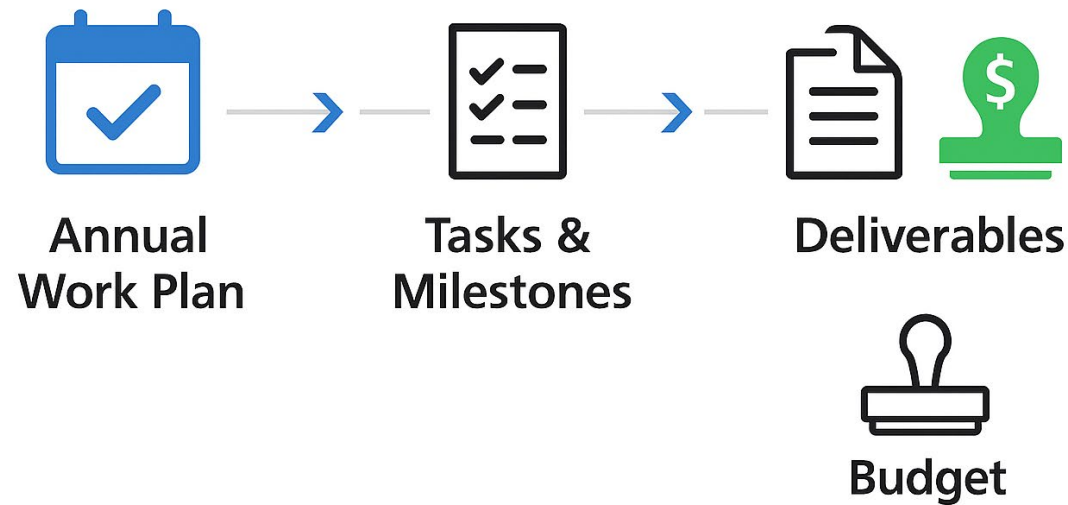
# ***Exclusions***

- Significant design changes post-regulatory coordination
- Management of any regulatory-required third-party contractors
- Contested case hearing/litigation support
- Later phase cultural resource activities, including managing human remains & related tribal consultation
- Threatened & endangered species relocation and unusual regulatory consultation



# Annual Work Plan

## Annual Work Plan Process



## Benefits of This Approach:

- **Control:** BRA retains oversight and flexibility.
- **Transparency:** Clear expectations for scope, cost, and schedule each year.
- **Risk Management:** Adjusts for regulatory changes, environmental findings, or unexpected site conditions.
- **Committee review:** Input on work plan
- **BOD review & approval:** Funding authorized annually by BOD



# ***FY26-FY27 Annual Work Plan***

<b>Activity</b>	<b>Tasks</b>	<b>Key Output</b>
<b>Environmental &amp; Cultural Investigations</b>	Aquatic resources, wetlands, species, archaeological & historic surveys, and regulatory agency coordination	Defines the regulatory constraints and impact footprint for alternatives analysis, informing the permitting path and ensuring the Preferred Alternative is both defensible and complete.
<b>Baseline Engineering &amp; Technical Foundations</b>	Hydrology & hydraulics, dam-break, floodplain, geotechnical characterization and design criteria	Establishes the technical basis for comparing alternatives. Clarifies hydrologic behavior, geotechnical limitations, and design standards so that each option can be evaluated consistently, quickly, and credibly.
<b>Alternatives Development &amp; Comparative Evaluation</b>	Reservoir alignments, pump station and pipeline routing, technical workshops, evaluation matrix, risk register	Provides a transparent comparison of viable reservoir and infrastructure configurations. Integrating engineering, environmental, operational, cost, and risk performance that will directly support the identification of the Preferred Alternative.
<b>Water Rights &amp; Operations Modeling</b>	Model simulations, firm yield evaluations, regulatory operations constraints, water right permit amendment groundwork	Determination of the Preferred Alternative to meet long term water supply needs.
<b>Public Relations &amp; Stakeholder Engagement</b>	Outreach strategy, messaging, overall communications plan	Establishes a proactive outreach program that ensures project understanding and transparency



# Initial Annual Work Plan Fee

## Remainder FY26 – FY27

	Approximate Completion	Initial Work Plan
<b>Category 1: Permitting and Agency Coordination</b>		
<b>Task 1: Reservoir Configuration Alternatives and Analysis</b>		<b>\$8,828,051</b>
<i>Subtask 1.1: Reservoir Configuration Alternatives</i>	100%	
<i>Subtask 1.2: Identification of Applicant's Preferred Alternative</i>	25%	
<b>Task 2: Federal and State Water Operations Analyses</b>		<b>\$1,907,233</b>
<i>Subtask 2.1: Review Existing Water Resource Conditions and Develop Baseline Conditions for Evaluations</i>	100%	
<i>Subtask 2.2: Federal Water Operations Analysis</i>	50%	
<i>Subtask 2.3: State Water Right Analysis</i>	30%	
<i>Subtask 2.4: Development of Models to inform State Water Right Evaluation</i>	95%	
<i>Subtask 2.5: Development and Support of Permit 2925B's Water Right Amendment Application</i>	20%	
<i>Subtask 2.8: Flood Plain Assessment</i>	100%	
<b>Task 3: Field Investigations</b>		<b>\$7,395,466</b>
<i>Subtask 3.1: Environmental Investigations</i>	35%	
<i>Subtask 3.2: Cultural Resources Investigations</i>	95%	
<b>Task 5: Federal CWA Section 404 Permit Application Development</b>		<b>\$680,902</b>
<i>Subtask 5.3: CWA 404 Aquatic Resource Delineation Report</i>	100%	
	<b>Total</b>	<b>\$18,811,652</b>



# *Recap and Path Forward*

- Alternatives analysis is our opportunity for acceleration
  - Prioritize critical tasks to ensure efficiency without increasing risk
- Intentional agency engagement protects schedule and credibility
- The proposed contracting approach:
  - promotes stewardship
  - preserves flexibility
  - responsibly advances the project



**“BE IT RESOLVED** that the Board of Directors of the Brazos River Authority hereby authorizes the General Manager/CEO to execute a professional services contract with GFT Infrastructure, Inc. to facilitate development of the Allens Creek Reservoir Project, with the contract providing for annual authorizations, with expenditures and annual planned activities subject to approval of the Board of Directors on an annual basis, and including contractual terms deemed beneficial to the Brazos River Authority.

**BE IT FURTHER RESOLVED**, the Board of Directors herein authorizes the first annual work plan with projected expenditures for the Allen’s Creek Project, in an amount not to exceed \$18,811,652, with the initial annual plan spanning a period of 17 months in order to coincide planning with the Brazos River Authority budget planning process.”



Brazos River Authority



**Brazos**

— ★ —  
**RIVER AUTHORITY**