



Emergency Management & Continuity Programs

***Tiffany Malzhan
Chief Environmental Officer***



PROJECT NAME

Project Budget: NA

Budget year approved: NA

Strategic Plan Goal: IV(c)



Why EM and COOP Programs are Critical

- Preserves essential functions
- Protects life and assets
- Regulatory compliance
- Minimizing chaos and downtime
- Ensure recovery
- Reduce liability exposure
- Clarifies roles in crises



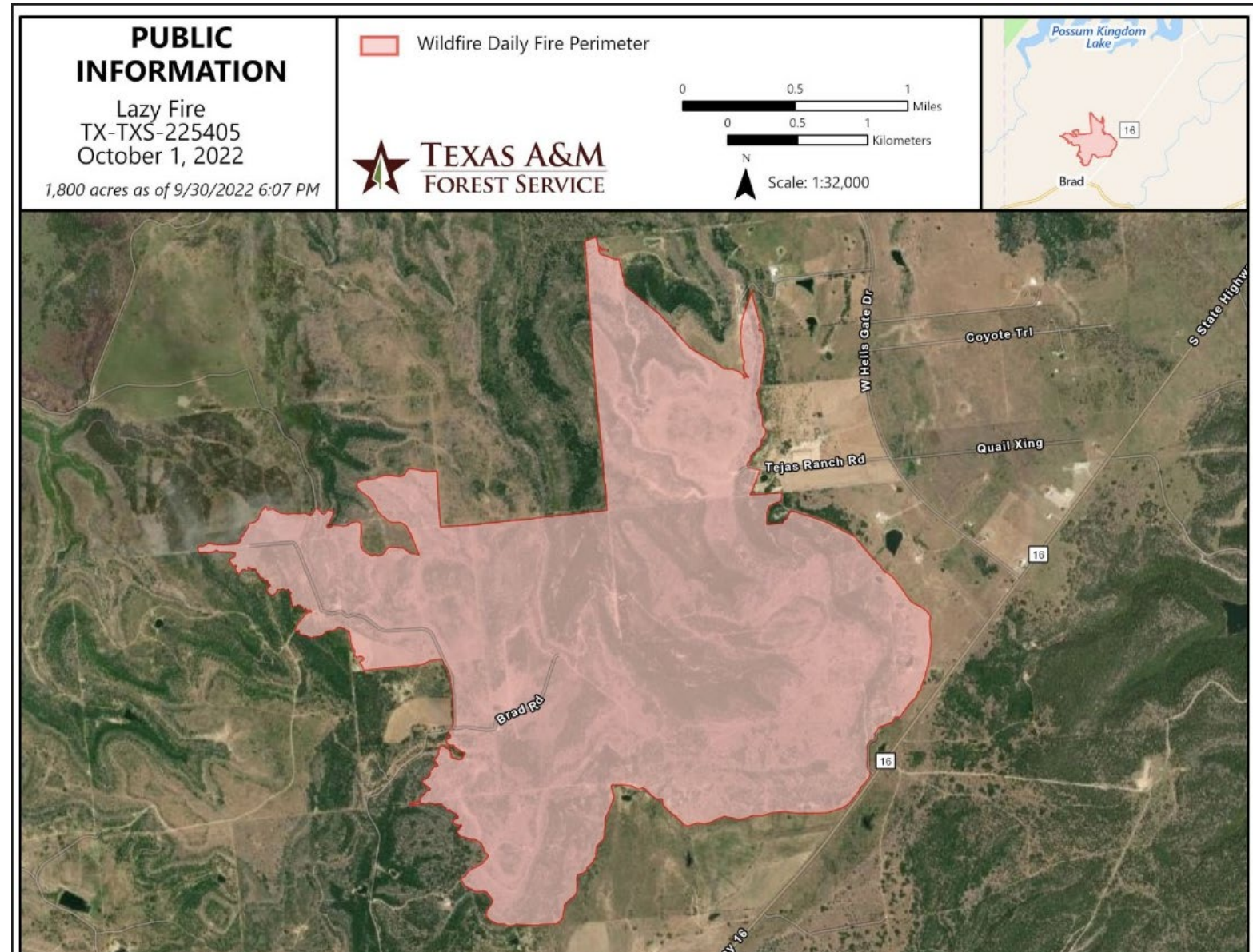
40% OF BUSINESSES
DO NOT RECOVER FROM A DISASTER





What is Emergency Management?

- **Emergency Management protects people, property, and physical infrastructure during an immediate crisis**





What is Continuity of Operations?

- **Continuity of Operations focuses on maintaining, or quickly restoring, vital business operations, revenue, and supply during and after a disruption**





Key Differences

	Emergency Management	Business Continuity
Primary Focus	Protect lives, property, and environment during emergency	Sustain BRA's essential water management and treatment services post-disruption
Scope	Immediate hazard response, evacuation, and emergency safety	BRA-wide, covering critical operations and compliance
Key Elements	<ul style="list-style-type: none">• Evacuation routes• Emergency contact and equipment lists• Hazard control and mitigation• Emergency roles and communication	<ul style="list-style-type: none">• Critical functions,• Succession planning• Alternate sites• IT systems continuity• Resource recovery
Ownership	EM Staff and Operations Managers/Personnel	COOP Staff, Senior Leadership, and Operations Managers
Communications During Event	<ul style="list-style-type: none">• Delivers status updates to GM/CEO, State Operations Center, and Local Emergency Management Coordinators• Gathers status updates from facilities• Coordinates internal meetings	<ul style="list-style-type: none">• COOP status to Emergency Management• Gather internal essential function data from departments• Assist in solving any essential function maintenance problems
Examples	<ul style="list-style-type: none">• Evacuation of BRA Facilities during wildfires• Fuel for generators during hurricanes or winter weather events• Responding to chemical releases	<ul style="list-style-type: none">• Accessing cloud data backups• Activating alternate work sites• Maintaining SCADA control at facilities• Maintaining routine regulatory compliance activities

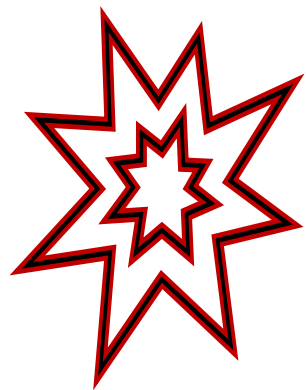


How they Work Together?

- **Each individual situation will dictate activation of one or both programs**
- **Programs must actively coordinate**
- **EM is lead in scenarios where there is an immediate threat to human health, environment, or infrastructure**
- **COOP is lead in scenarios without an EM impetus**
- **Information sharing**
- **Joint exercises**



Incident Occurs



Respond

Emergency Response

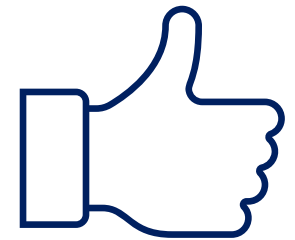
Crisis Management and Communications

Recover & Resume

Continuity

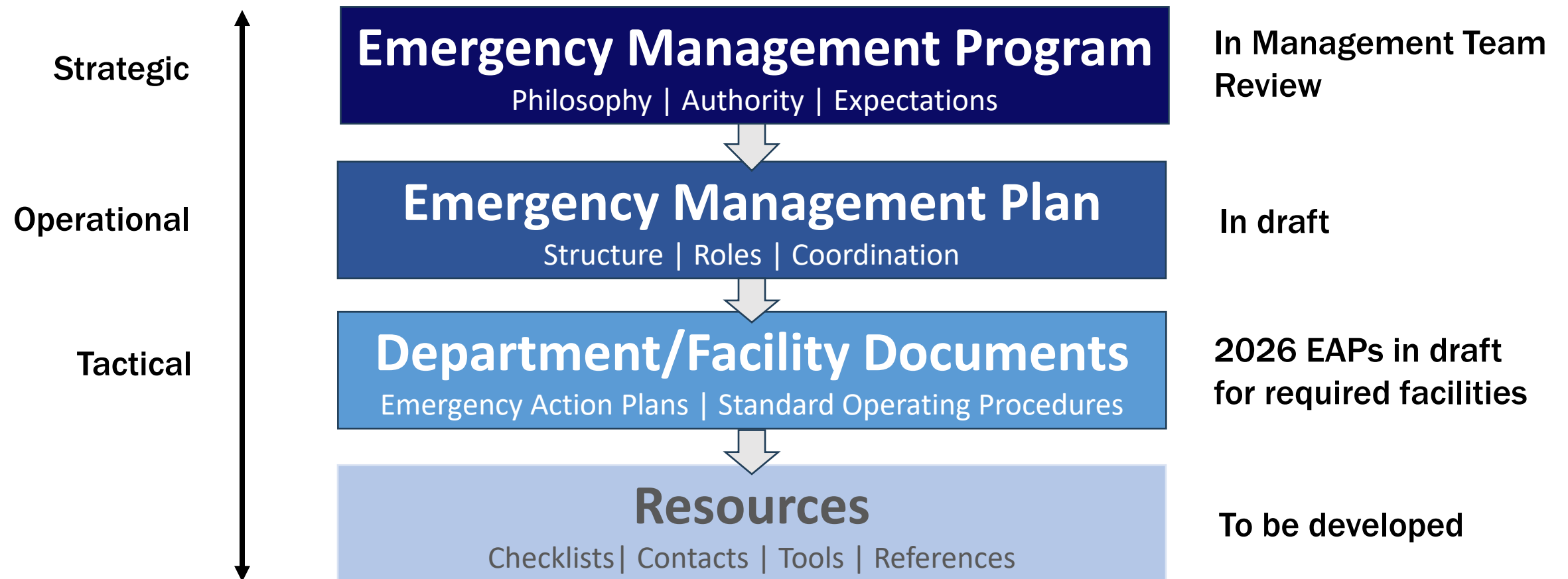
Restore & Return

Business as Usual





Key Components to Emergency Management Program





Key Components to Continuity of Operations Program





Shared Responsibility

Departments

Subject Matter Experts

**EM and COOP
Staff**

Structure and Support

Together

We create plans that protect the BRA's
mission and people



Questions?



Brazos River Authority



Brazos

— ★ —
RIVER AUTHORITY