



**Brazos River Authority**

# **Water Bodies Not Meeting State Criteria *and* FY2012 Proposed Monitoring**



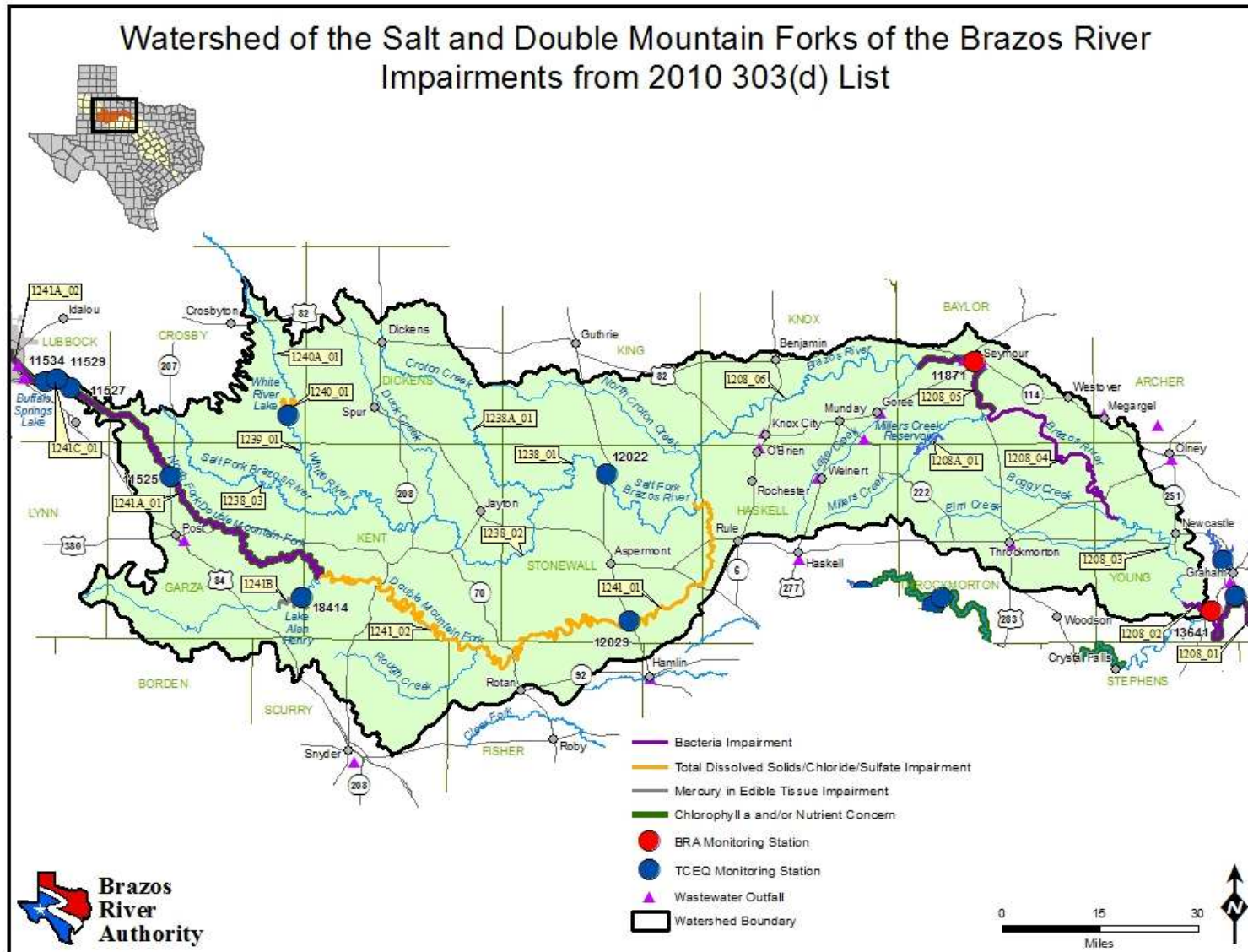
## **Basin Overview**

- **17 classified segments and 69 unclassified waterbodies are listed as impaired on the Draft 2010 303(d) List**
- **11 classified segments and 58 unclassified waterbodies are listed as impaired for elevated Bacteria**
- **5 classified segments are listed as impaired for chloride, sulfate and/or TDS**
- **4 classified segments and 6 unclassified waterbodies are listed for dissolved oxygen Impairment**
- **33 classified segments and 53 unclassified waterbodies are identified as having concerns based on screening levels for algal growth and/or elevated nutrients**



# **General Recommendations**

- **Maintain existing monitoring levels in *most* watersheds**
- **Continue performing biological assessments to better characterize status of aquatic life in the basin**
- **Continue Year 3 quarterly sampling on a 5-year rotating schedule to perform metals, VOC and SVOC monitoring on selected segments throughout the basin**



➤ An RUAA is planned for Segment 1208 – **Brazos River above Possum Kingdom Lake**





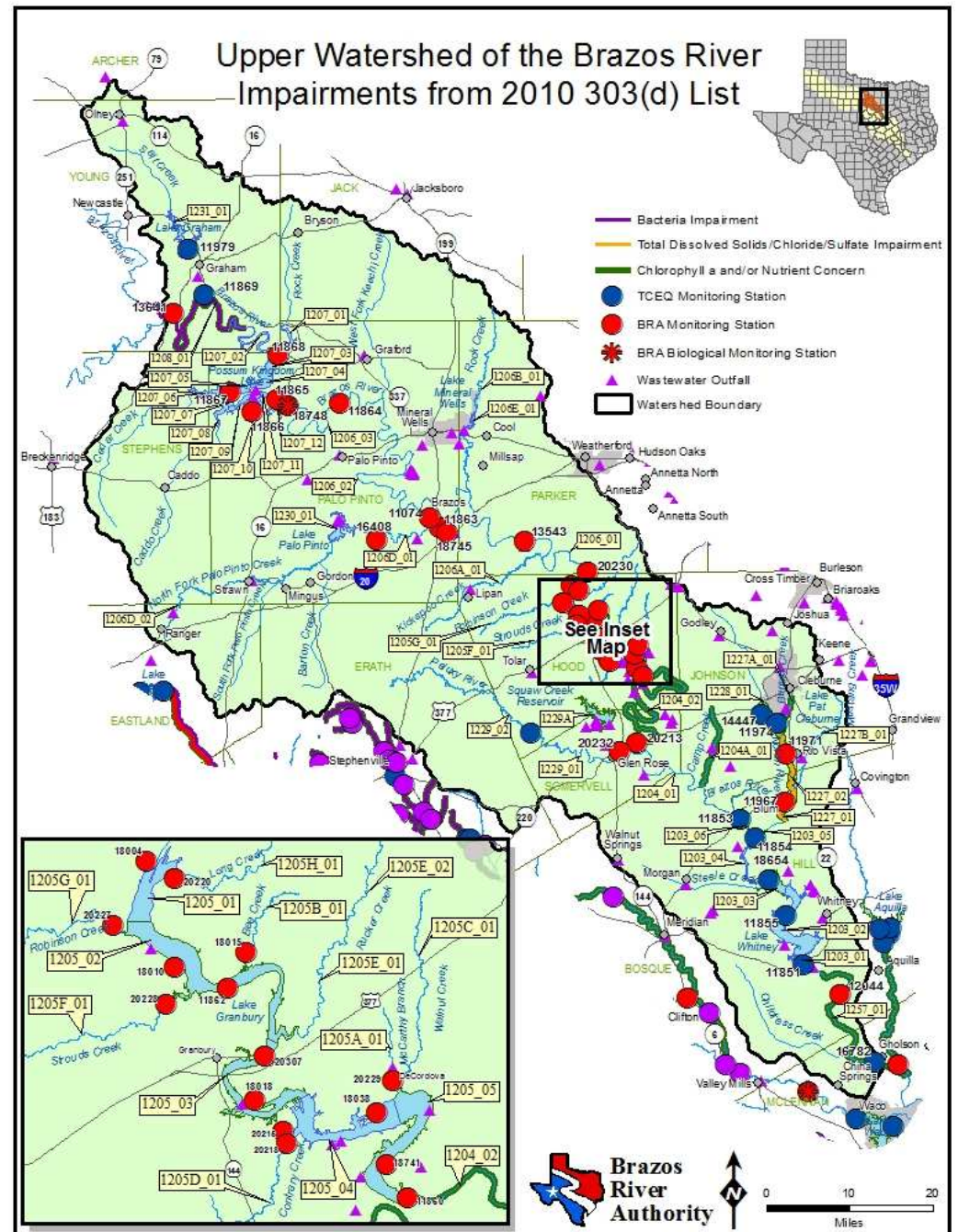








- An RUAA is planned for the **Brazos River above Possum Kingdom Lake**
- **Lake Granbury Watershed Protection Plan**
- **Whitney Lake is part of the National Rivers and Streams Assessment**

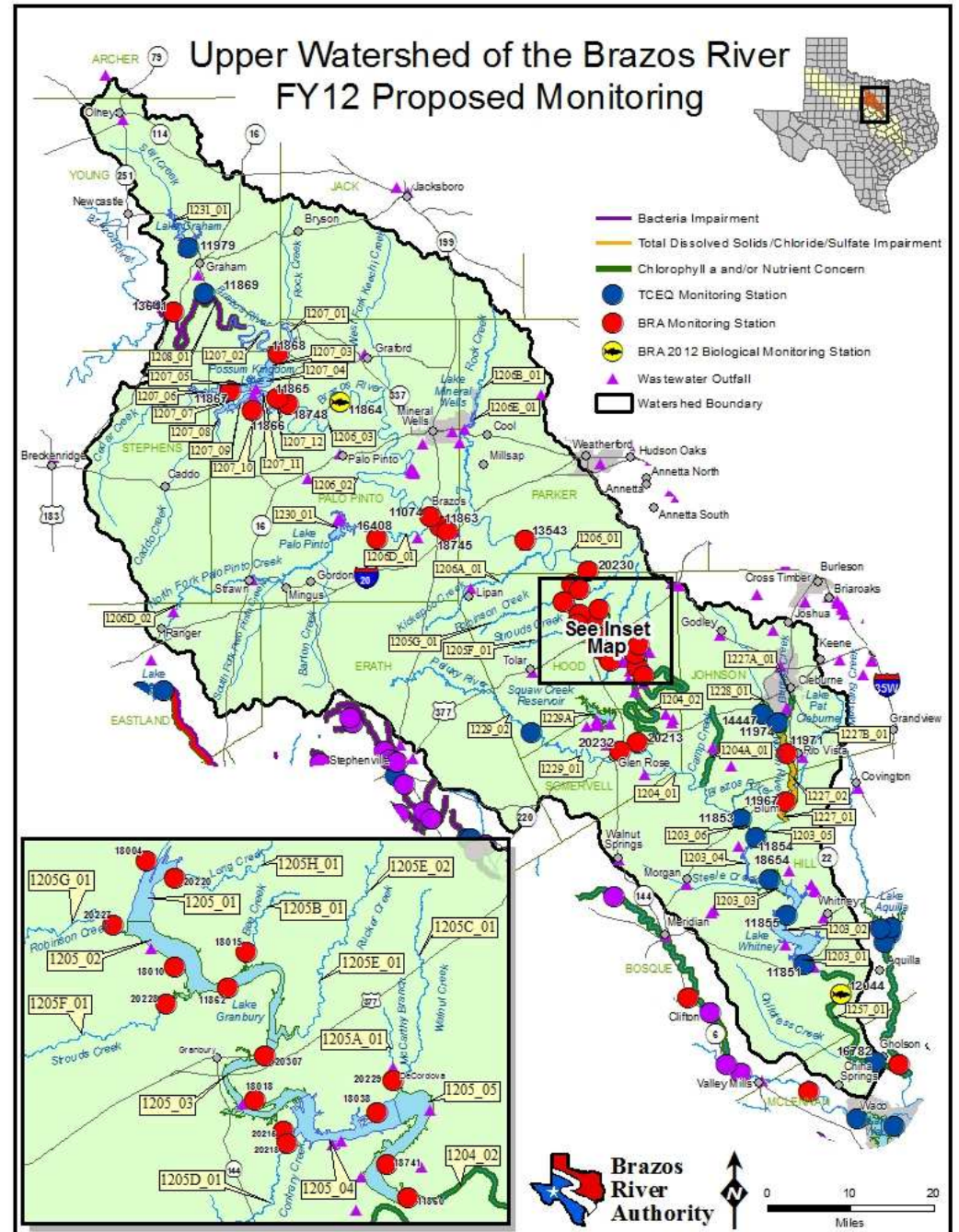






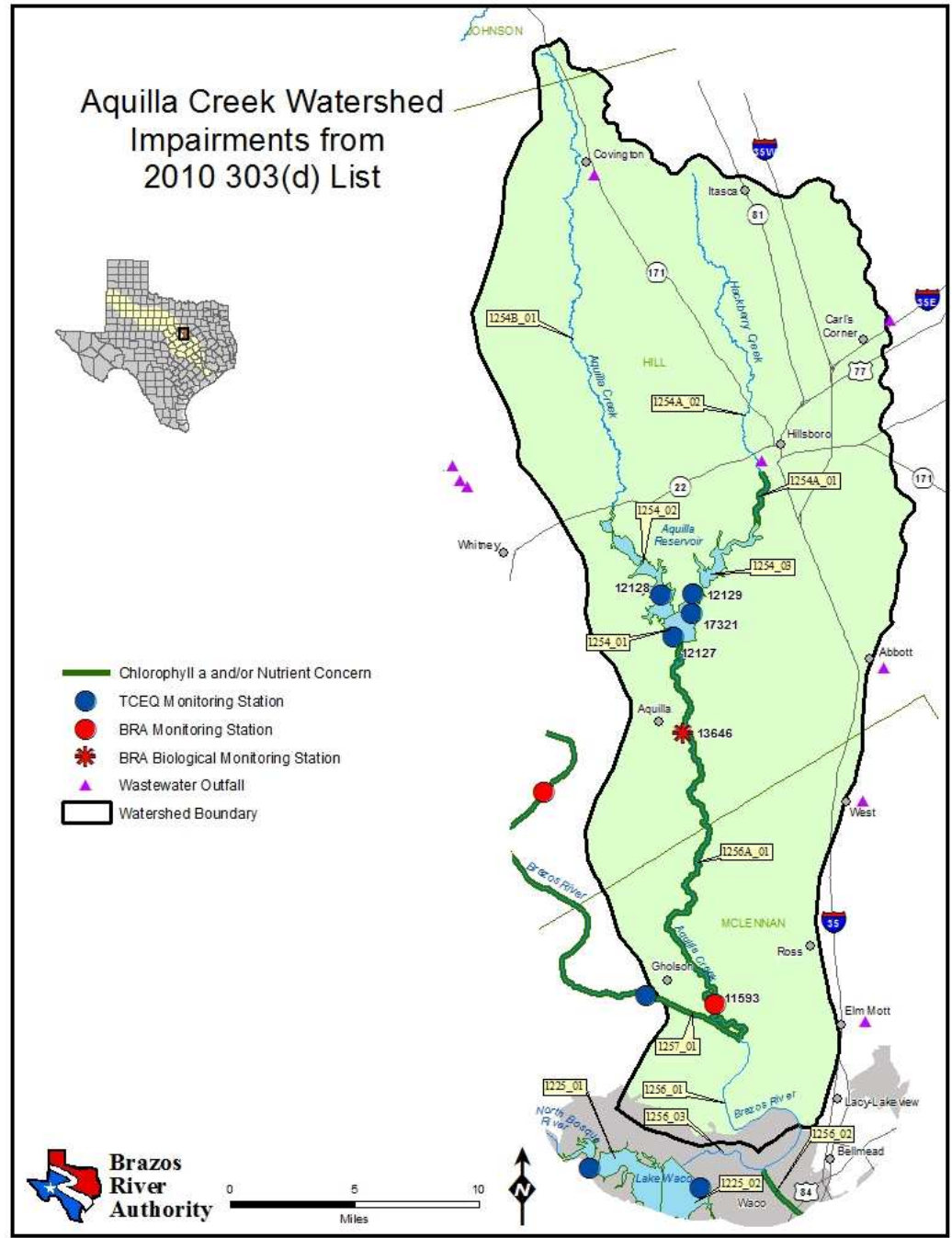
# Brazos River Authority

- Add a biological station on the Brazos at FM 2114
- Add a biological station on the Brazos at FM 4 north of Palo Pinto



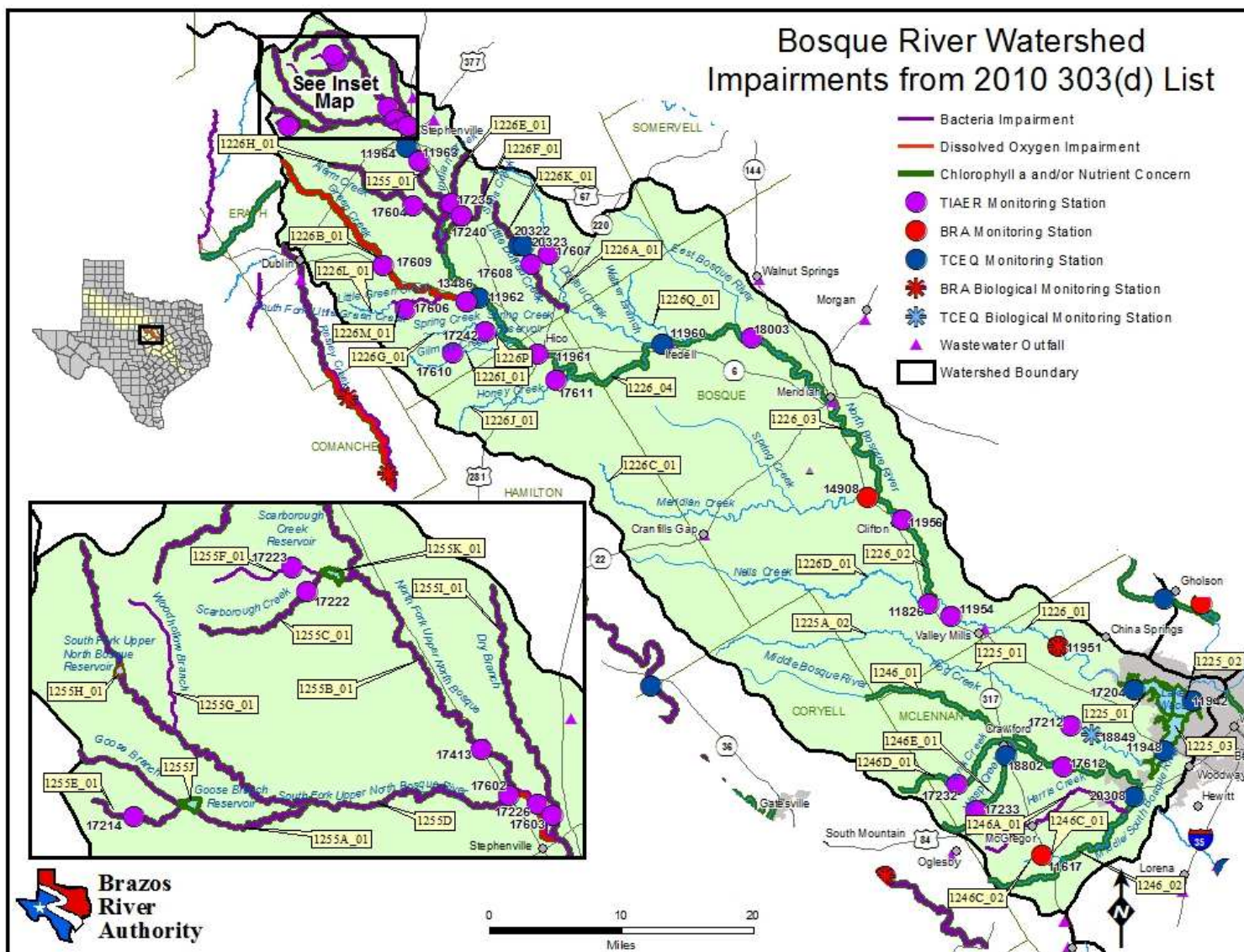


# Brazos River Authority









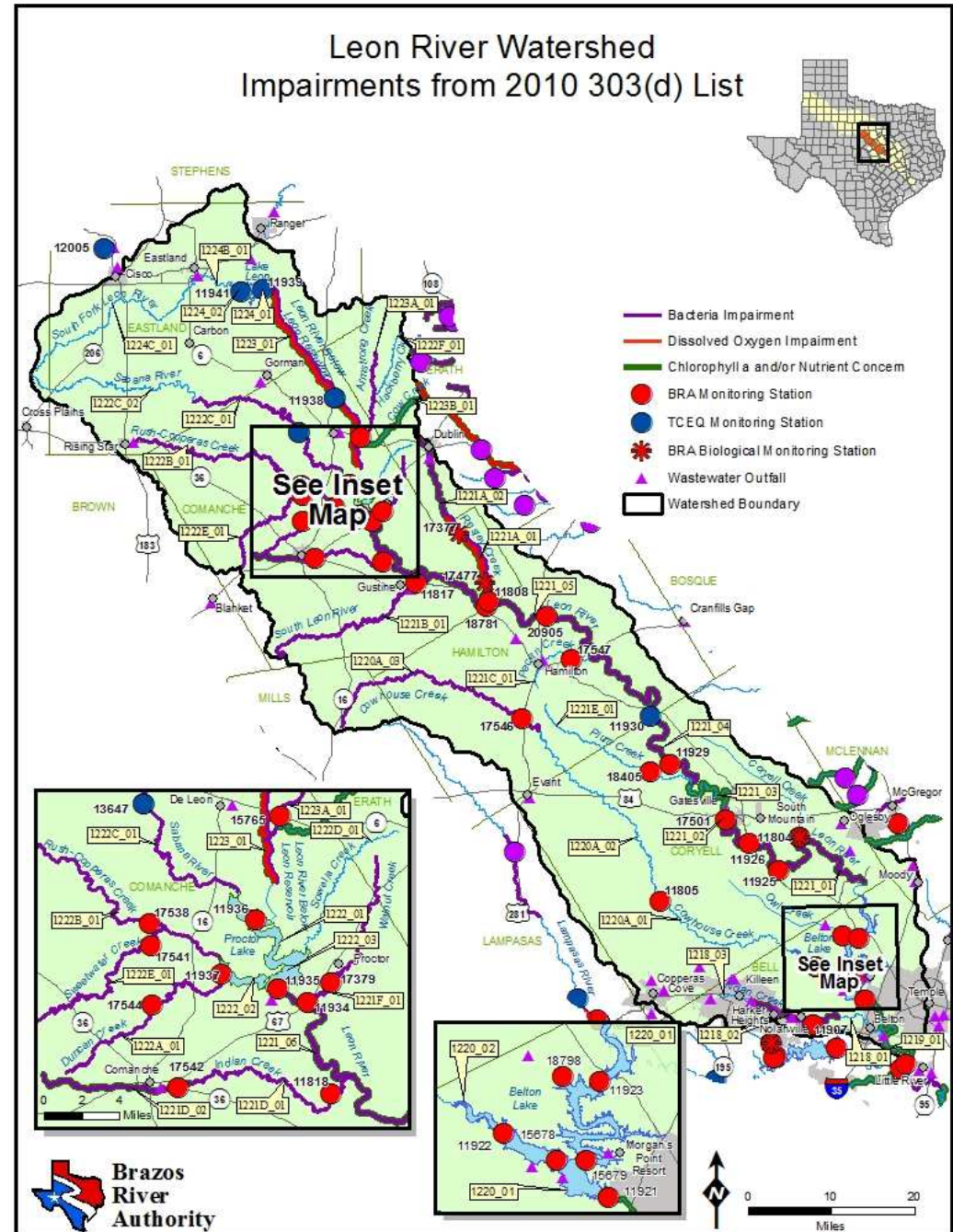
- RUAAs have been completed and are in review by the Standards Team for Indian Creek, Sims Creek, Wasp Creek, Upper North Bosque River, Goose Branch, Unnamed Tributary of Goose Branch, North Fork Upper North Bosque, Scarborough Creek, Unnamed Tributary of Scarborough Creek, and Woodhollow Branch







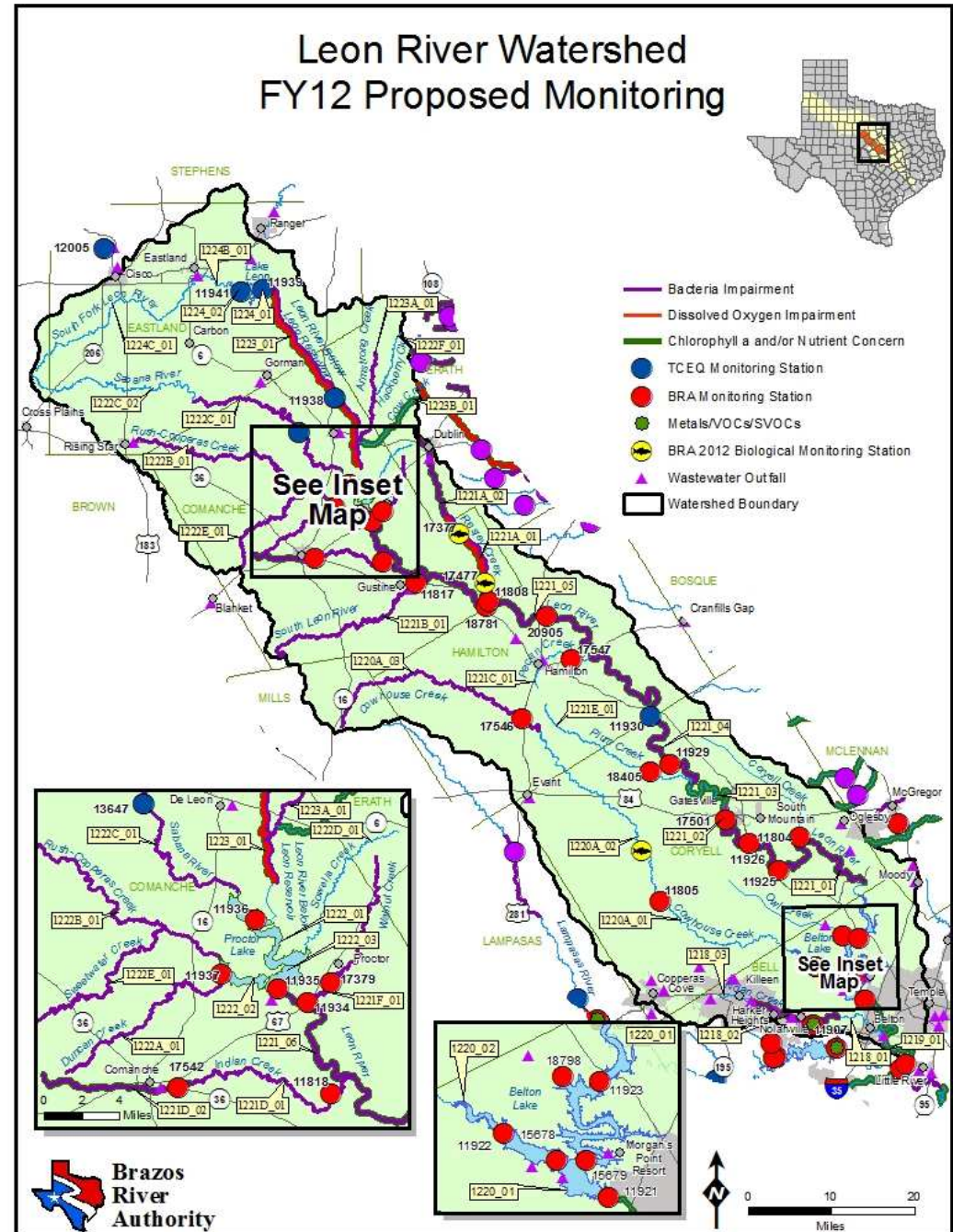
- RUAAs have been completed and are in review by the Standards Team for **Nolan Creek/South Nolan Creek, Resley Creek, South Leon River, Pecan Creek, Indian Creek, Duncan Creek, and the Leon River Below Leon Reservoir**
- **Leon River Watershed Protection Plan**
- Data Collection Initiatives to Address 5b/5c Water Bodies in the Brazos River Basin - **Resley Creek (Aquatic Life Assessment)**
- **Rush-Copperas Creek** is part of the National Rivers and Streams Assessment

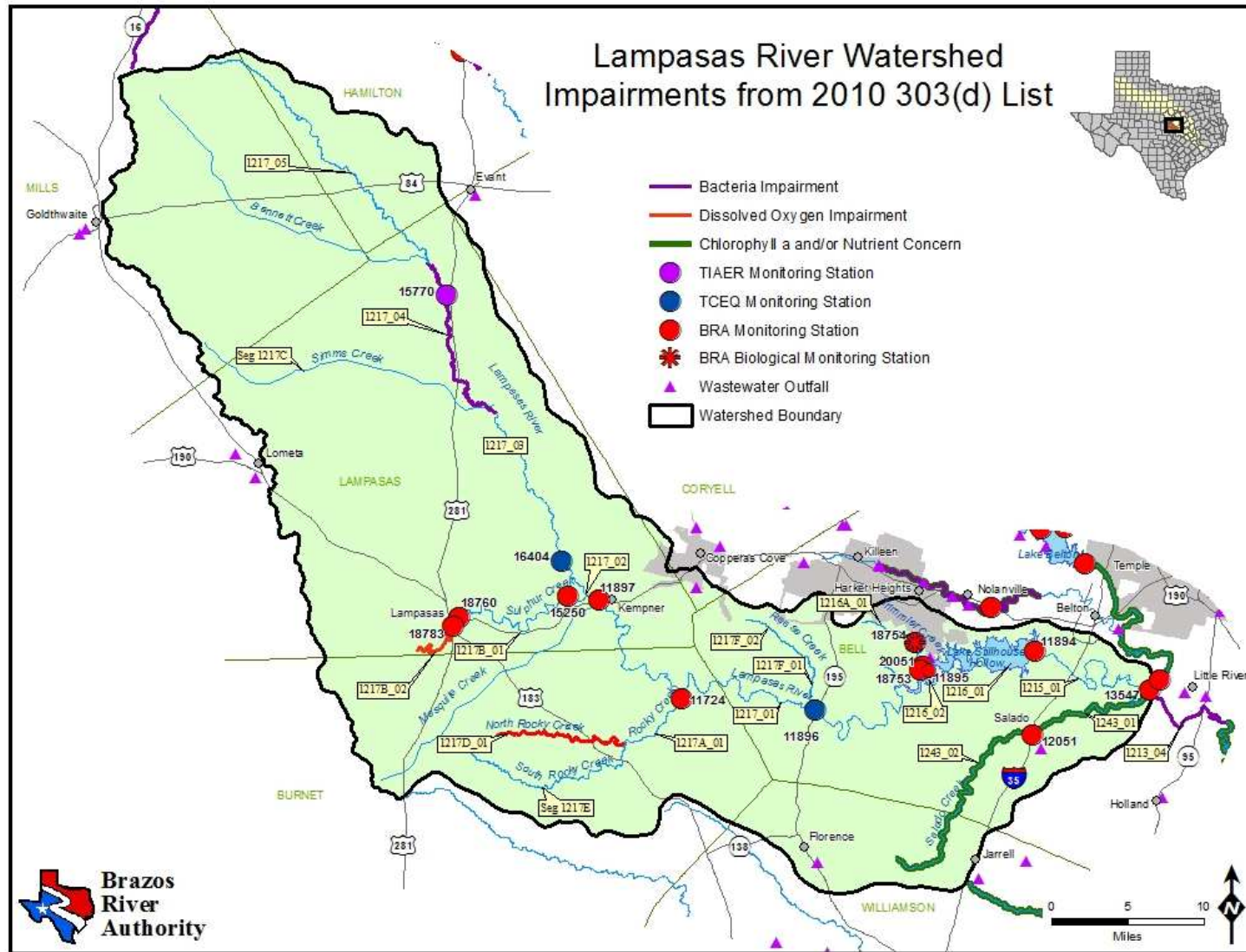






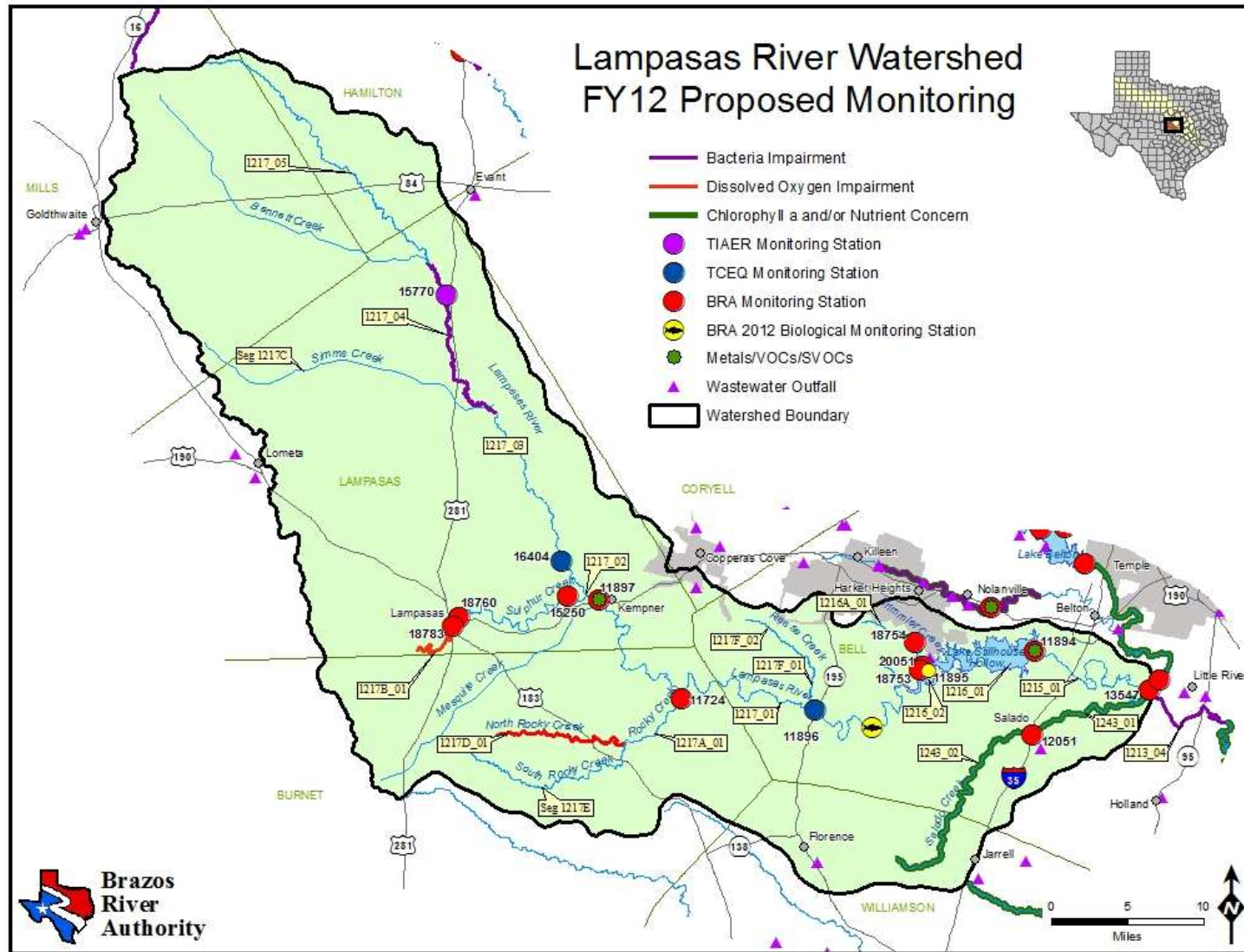
- Add biological stations on
  - Cowhouse Creek
  - Resley Creek upstream of CR 392\*
  - Resley Creek at FM 2823\*
- Discontinue
  - Armstrong Creek at SH 6
  - Copperas Creek at CR 419
  - Sweetwater Creek at CR 419
  - Duncan Creek at CR 419





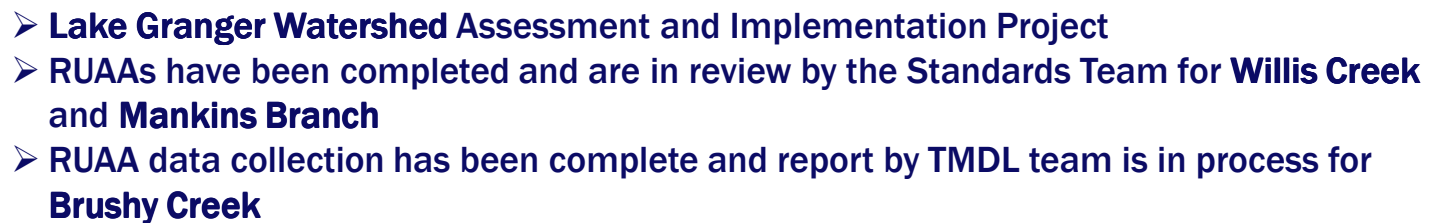
- **Lampasas River Watershed Protection Plan**
- **Assessment of NPS Contributions from the City of Killeen Urbanized Area in the Lampasas Watershed**
- **North Rocky Creek UAA is under review by EPA**

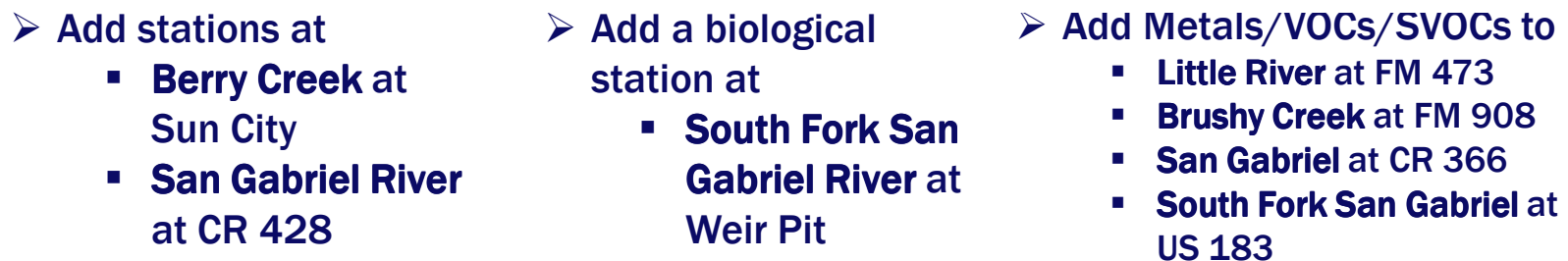




- Add biological station to **Lampasas River at FM 2482**
- Add Metals/VOCs/SVOCs to
  - **Lampasas River at US 90**
  - **Stillhouse Hollow Lake Dam**
  - **Nolan Creek/South Nolan Creek at US 190**

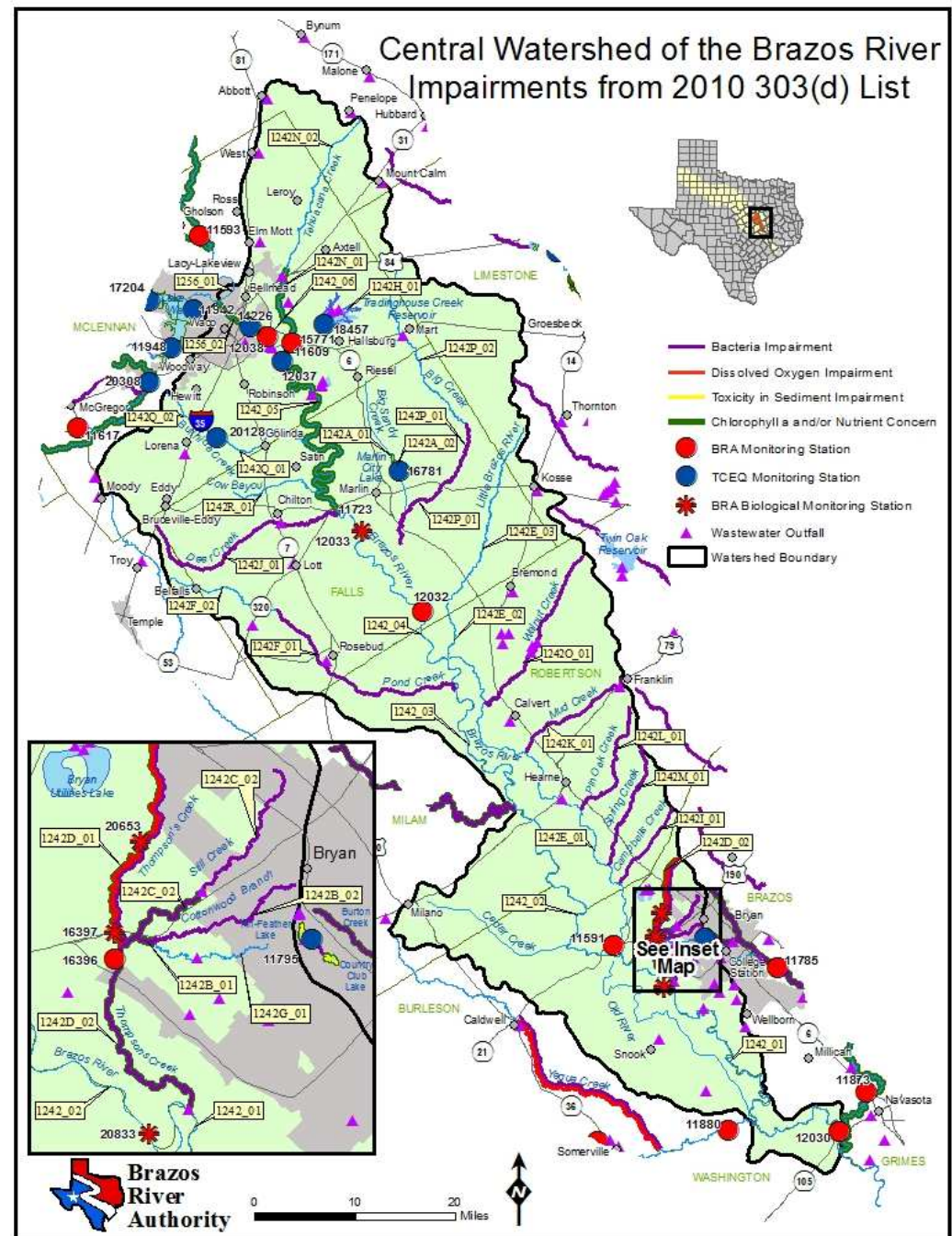








- RUAAs have been completed and are in review by the Standards Team for **Cottonwood Branch, Still Creek, Thompson Creek, and Big Creek**.
- Little Brazos River Tributaries Bacteria Assessment – **Walnut Creek, Mud Creek, Pin Oak Creek, Spring Creek, and Campbell's Creek**
- Data Collection Initiatives to Address 5b/5c Water Bodies in the Brazos River Basin - **Deer Creek (bacteria), Tehuacana Creek (bacteria) and Thompson's Creek (UAA)**

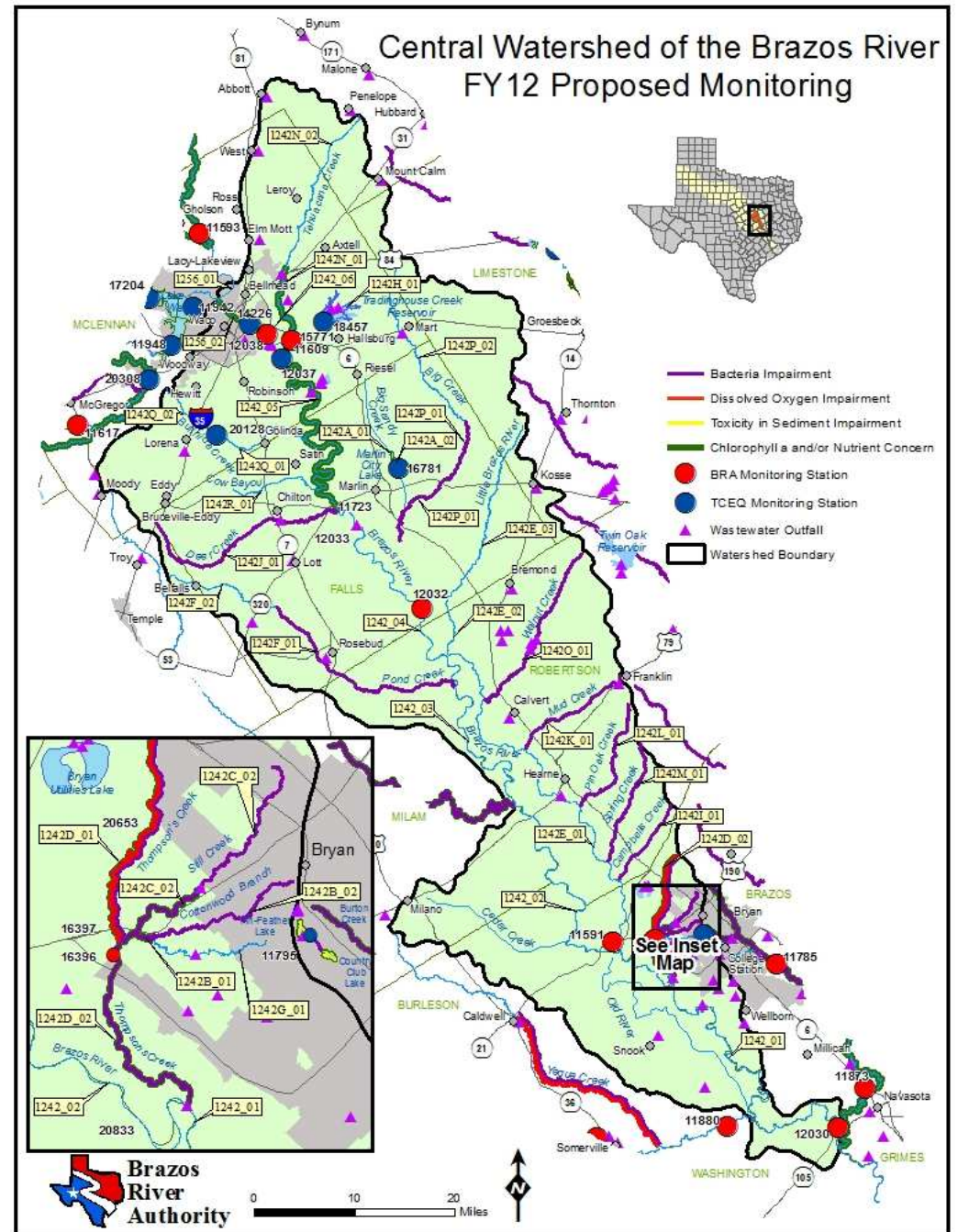






# Brazos River Authority

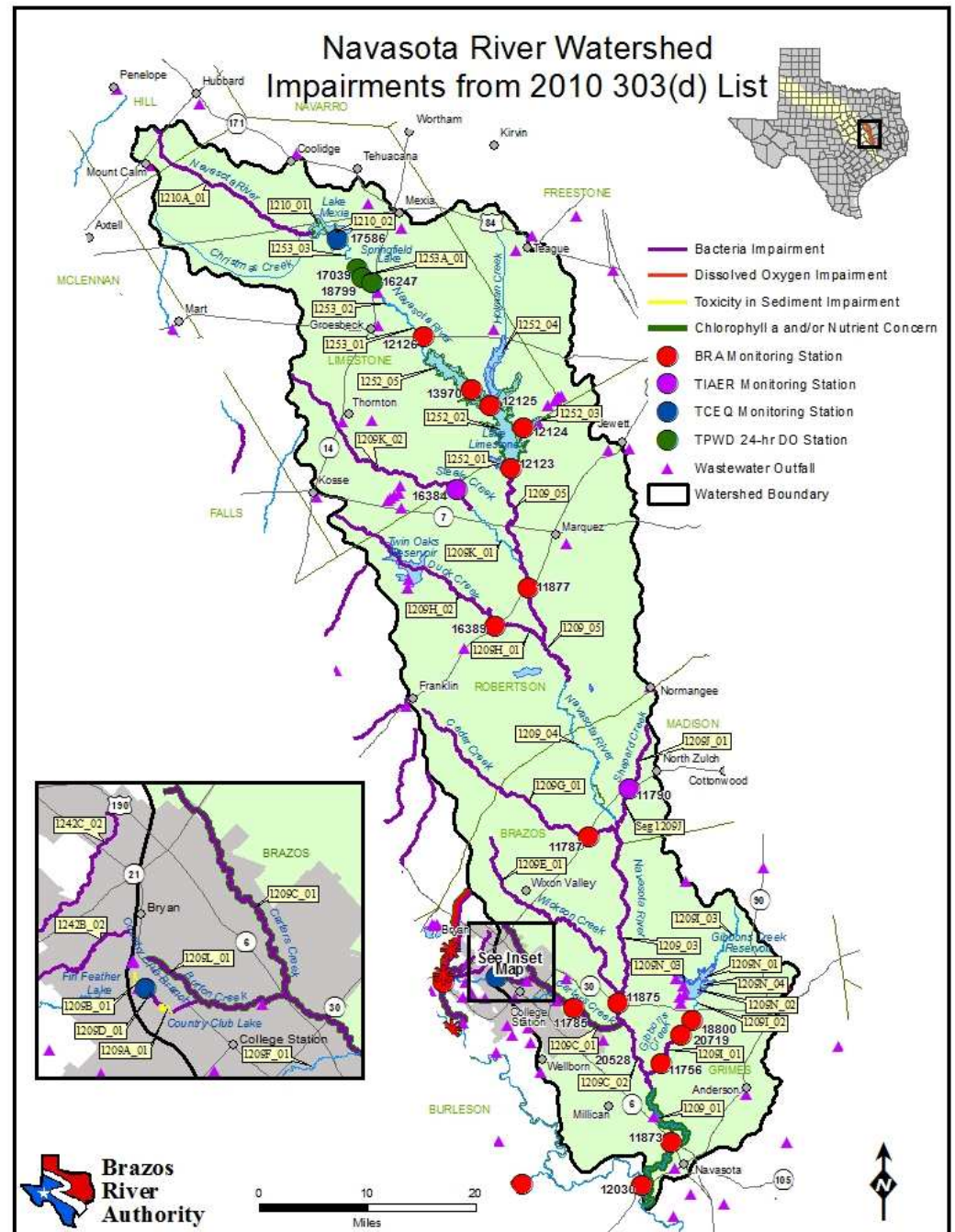
➤ No changes for FY2012





# Brazos River Authority

- RUAA data collection has been complete and report by TMDL team is in process for **Navasota River Below Lake Limestone, Country Club Branch, Wickson Creek, Cedar Creek, Duck Creek, Gibbons Creek, Shepherd Creek, and Steele Creek**
- An RUAA is planned for **Navasota River above Lake Mexia**
- **Carter's Creek and Burton Creek TMDL Implementation**
- Data Collection Initiatives to Address 5b/5c Water Bodies in the Brazos River Basin– **Cedar Creek (bacteria) and Gibbon's Creek (bacteria)**



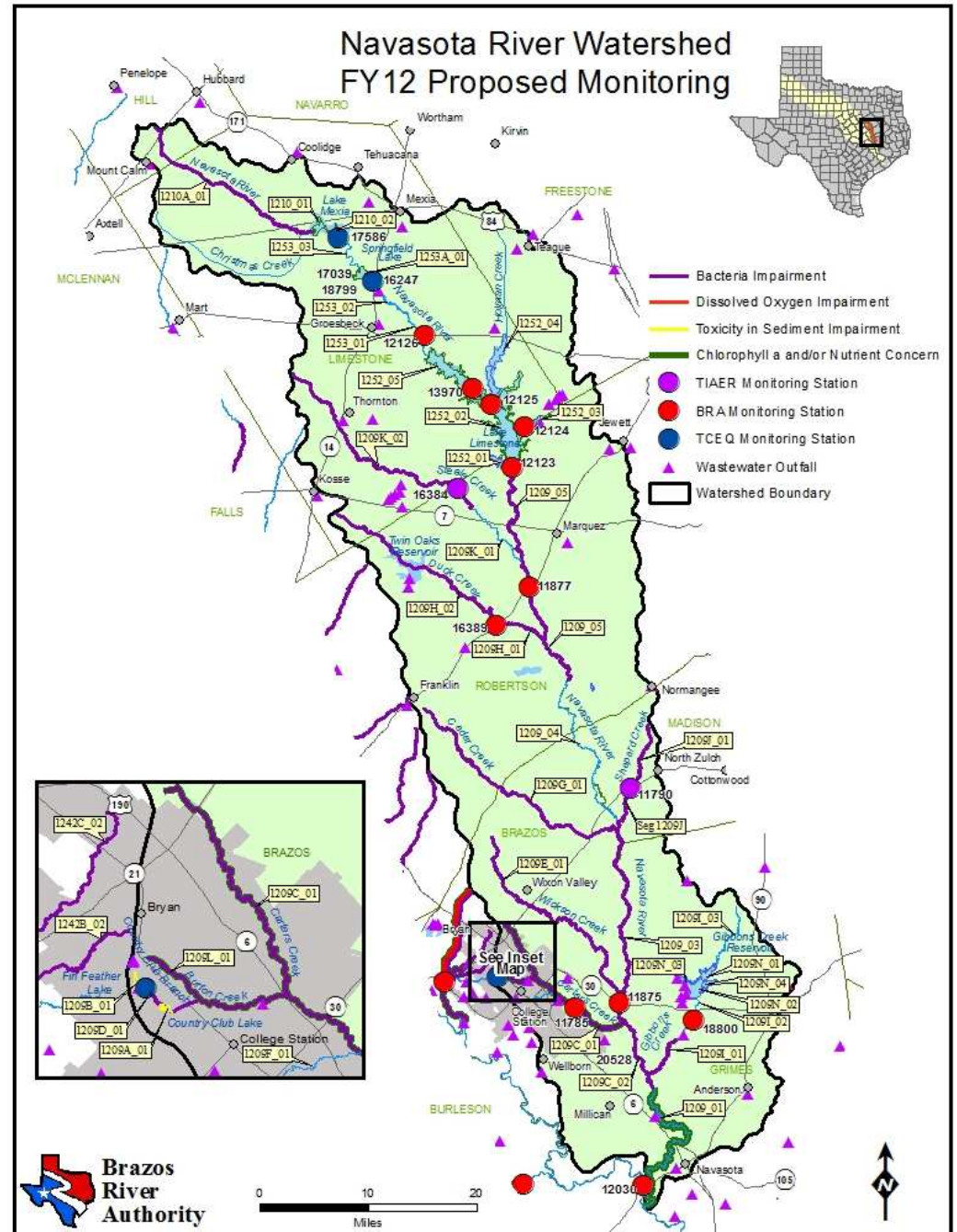




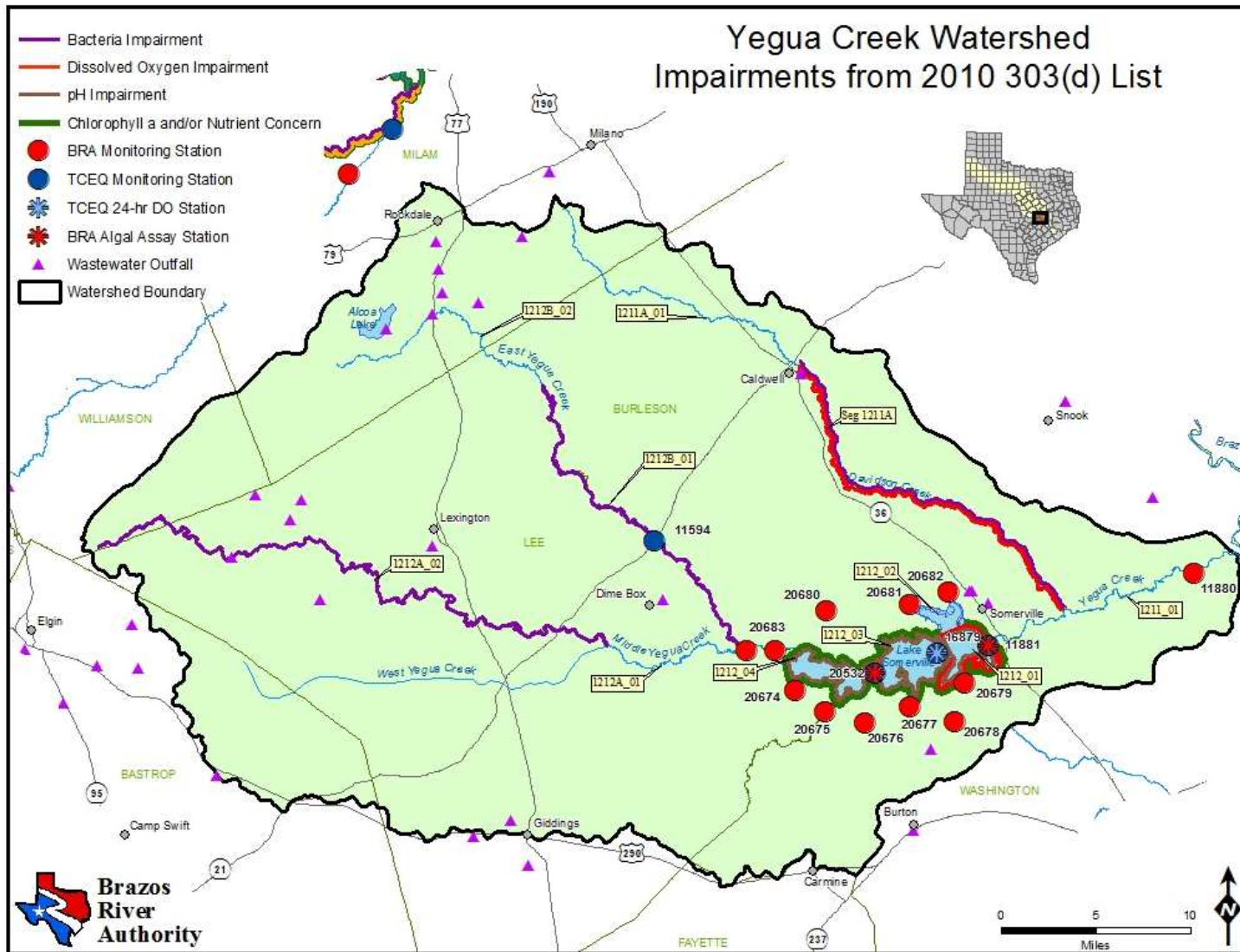
# Brazos River Authority

## ➤ Discontinue

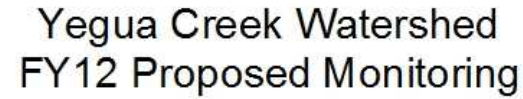
- **Cedar Creek at US 190/SH 21\***
- **Gibbons Creek on North-South Haul Rd\***
- **Gibbons Creek at CR 190\***
- **Navasota River at SH 6\***







- An RUAA is planned for **East Yegua Creek**
- Data Collection Initiatives to Address 5b/5c Water Bodies in the Brazos River Basin (Nutrients) – **Somerville Lake and Ten Tributaries to Somerville Lake**
- RUAA's have been completed and are in review by the Standards Team for **Davidson Creek**

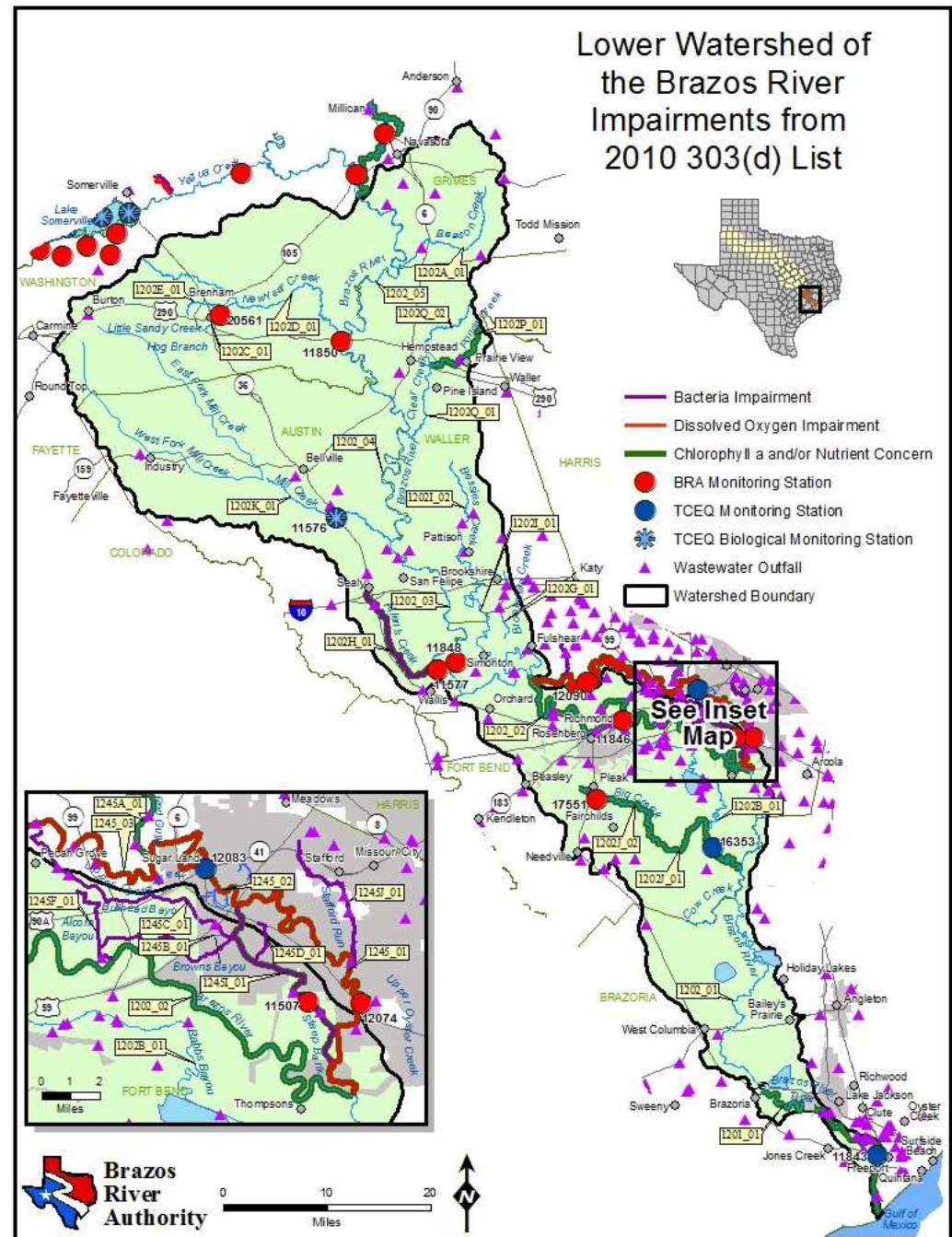


- Add biological stations at
  - Yegua Creek at FM 50
  - Yegua Creek downstream of CR
- Discontinue
  - Lake Somerville Trib Stations and Algal Assays





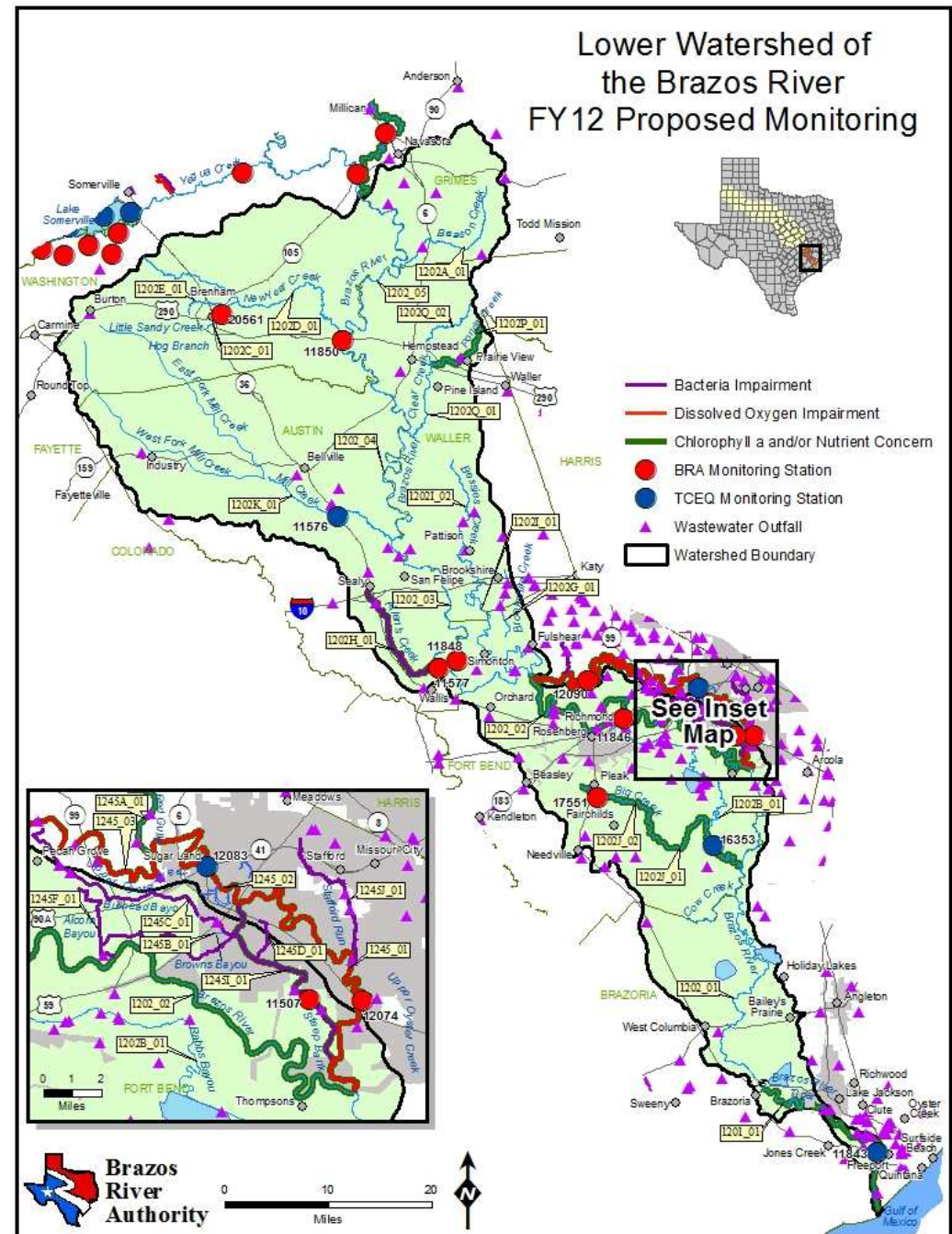
- RUAA's have been completed and are in review by the Standards Team for **Allen's Creek**

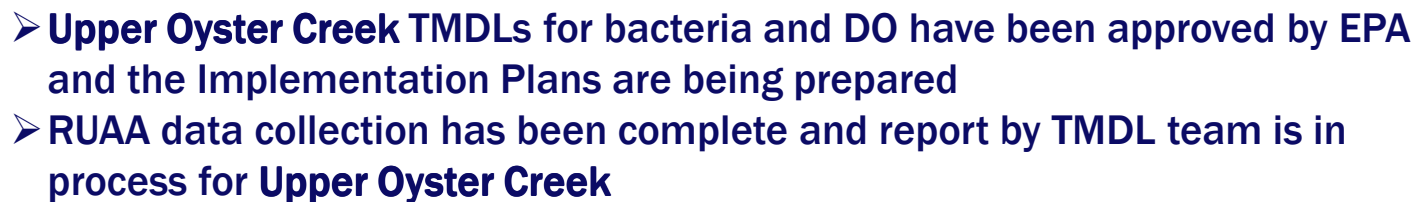




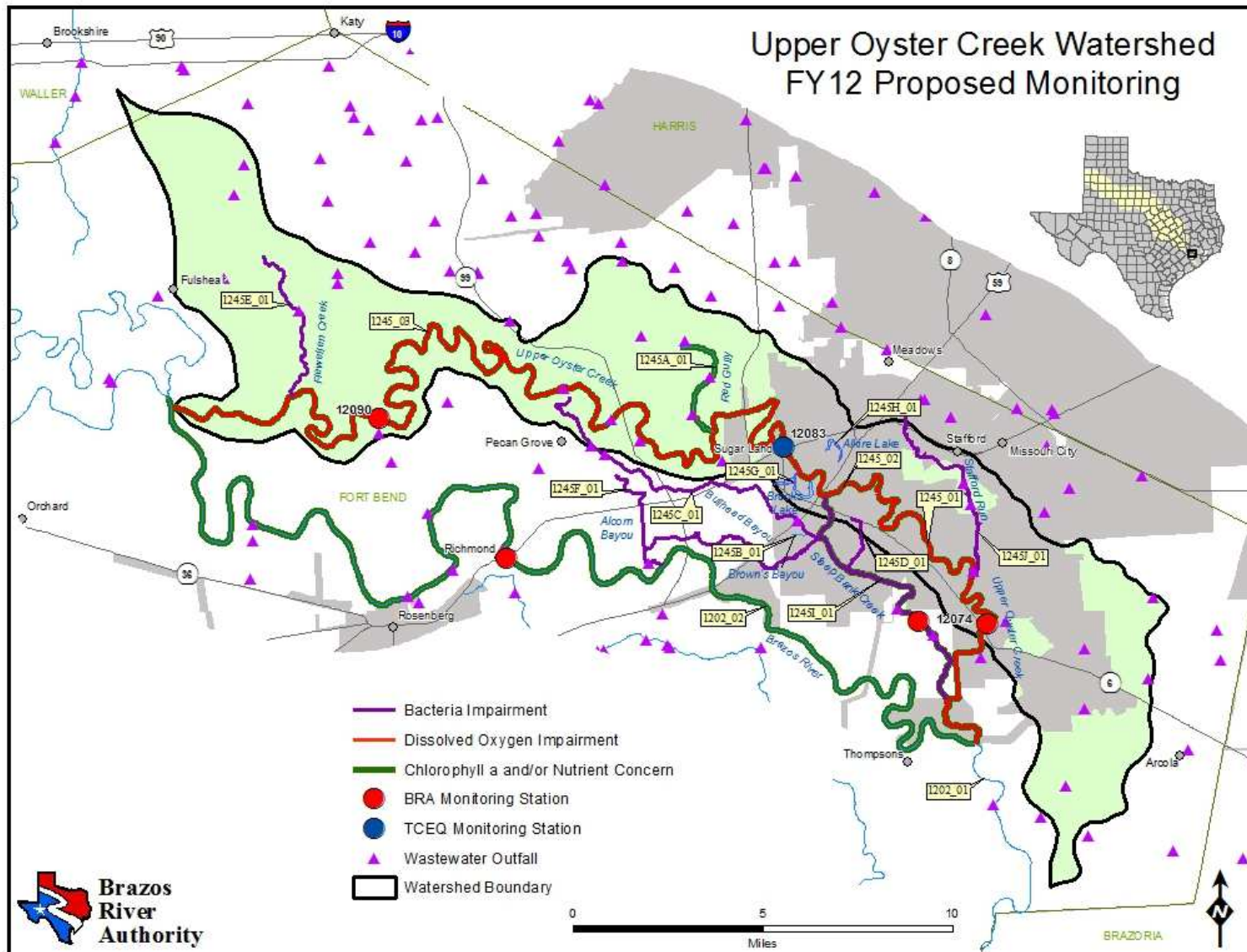


➤ No changes for FY12









➤ No changes for FY12





Brazos River Authority



Brazos  
River  
Authority