



Overview of RUAAAs in the Brazos Basin



Joe Martin
Water Quality Standards



Recreational Standards History

- Prior to the 2010 TSWQS revision, recreational uses were a mix of contact and noncontact recreation
- Determinations made by aquatic scientists familiar with water body
- No presumed uses for unclassified water bodies, prior to 1988



Recreational Standards History

- 1983 EPA required UAAs for designation less than PCR
- 1986 EPA sued for approving Texas Surface Water Quality Standards
- 1988 TSWQS revisions assigned a presumed use of PCR to unclassified streams
- Classified segments were designated PCR except for the few instances where a UAA had been approved



Current Recreational Standards

- 2010 TSWQS expanded recreational categories into PCR, SCR 1, SCR 2, and NC
- A RUAA must be performed in order to change recreational use and criteria
- Unclassified water bodies with site specific recreational criteria listed in Appendix G of the TSWQS



2010 CONTACT RECREATION STANDARDS

Recreation Category	Definition Summary	Geometric Mean Criteria (colonies/100mL)
Primary Contact	Significant risk of ingestion (swimming, diving, wading by children, tubing, etc.)	126
Secondary Contact 1	No significant risk of ingestion (wading by adults, fishing, boating, etc.)	630
Secondary Contact 2	Same as SC1, but recreational activities occur less frequently because of physical characteristics or limited public access	1030
Noncontact Recreation	No significant risk of ingestion and contact recreation does not occur because of unsafe conditions (ship and barge traffic, birding, etc.)	2060



Identifying Appropriate Streams

- List of streams selected from 303(d) List
- Surveys of recreational use sent out to TCEQ Regions, TPWD, River Authorities, TSSWCB
- Information from surveys compiled to find appropriate water bodies for RUAAAs



Surveys

- Is there an existing use?
- Where in the water body does recreation occur?
- How often do primary and secondary contact recreation occur?
- What surrounding conditions promote or impede access to the water body?



Recreational Use Change

- Identify Appropriate Stream
 - Use information from surveys
- Conduct RUAA
- Public Participation Process
 - 30 day public comment period
- Adoption of TSWQS
 - Formal comment period
- Approval from EPA



Current Status – Released

- 1208 Brazos River Above Possum Kingdom Lake
- 1209 Navasota River Below Lake Limestone
- 1210A Navasota River Above Lake Mexia
- 1212B East Yegua Creek
- 1244 Brushy Creek
- 1245 Upper Oyster Creek
- 1245C Bullhead Bayou
- 1245D Unnamed tributary of Bullhead Bayou



Not Released

- 1202H Allen's Creek
- 1211A Davidson Creek
- 1218 Nolan Creek/ South Nolan Creek
- 1221 Leon River Below Proctor Lake
- 1221A Resley Creek
- 1221B South Leon River
- 1221C Pecan Creek
- 1221D Indian Creek
- 1221F Walnut Creek
- 1221E Plum Creek
- 1222A Duncan Creek
- 1222E Sweetwater Creek



Not Released

- 1222E Sweetwater Creek
- 1223 Leon River Below Leon Reservoir
- 1223A Armstrong Creek
- 1226E Indian Creek
- 1226F Sims Creek
- 1226K Little Duffau Creek
- 1242B Cottonwood Branch
- 1242C Still Creek
- 1242D Thompson Creek
- 1242P Big Creek



Not Released

- 1246E Wasp Creek
- 1247A Willis Creek
- 1248C Mankins Branch
- 1255 Upper North Bosque River
- 1255A Goose Branch
- 1255B North Fork Upper North Bosque River
- 1255C Scarborough Creek
- 1255E Unnamed trib. Goose Branch
- 1255F Unnamed trib. Scarborough Creek
- 1255G Woodhollow Branch



Collecting Data

- 1209D Country Club Branch
- 1209E Wickson Creek
- 1209G Cedar Creek
- 1209H Duck Creek
- 1209I Gibbons Creek
- 1209J Shepherd Creek
- 1209K Steele Creek



New RUAAAs

- 1204A Camp Creek
- 1212A Middle Yegua Creek
- 1216A Trimmier Creek
- 1222B Rush-Copperas Creek
- 1226H Alarm Creek
- 1226M Little Green Creek
- 1242F Pond Creek
- 1242J Deer Creek
- 1255I Dry Branch



Brazos Basin RUAs

Brazos River Above Possum Kingdom (1208)

- 189 mile perennial stream flowing through North Central Texas
- Rural watershed flowing through five counties
- Field surveys observed swimming and tubing
- Swimming, tubing and wading by children all reported as uses in interviews



Navasota River Above Lake Mexia (1210A)

- 25 mile intermittent stream in Hill and Limestone counties
- Rural watershed with little public access
- No primary or secondary contact activities observed during field surveys
- Hunting and fishing were uses reported in interviews





Brazos Basin RUAs

East Yegua Creek (1212B)

- 45 mile perennial stream flowing through Central Texas
- Rural watershed with limited public access
- One park, Lake Somerville Wildlife Management Area
- Fishing and hunting are the dominant recreational uses, no primary contact recreation found



Navasota River Below Lake Limestone (1209)

- 120 mile perennial stream
- Predominantly rural with agriculture being the primary land use
- No publicly accessible parks and public access is limited to bridge crossings
- Swimming and other primary contact recreational uses such as children wading were documented in the Navasota River





Brazos Basin RUAs

Brushy Creek (1244)

- 75 mile perennial stream
- Flows through the city of Round Rock
- Four publically accessible parks adjacent to stream
- Swimming and other primary contact recreational uses were documented in Brushy Creek



Upper Oyster Creek (1245)

- 54 mile perennial stream in Fort Bend County
- Watershed is composed of pasture land as well as flowing through and impounded in the City of Sugar Land, TX
- Flows through five parks and recreation areas
- Primary contact recreation documented in personal and observed recreational activities





Brazos Basin RUAs

Bullhead Bayou (1245C)

- 9.6 mile intermittent with pools stream
- Modified ditch used primarily for flood control purposes
- Flows through suburban area with access to stream and maintained riparian zone
- No observations of primary contact recreation in basic survey

Unnamed tributary of Bullhead Bayou (1245D)

- 1.6 mile intermittent with pools stream
- Modified ditch used primarily for flood control purposes
- Flows through suburban area with access to the stream and maintained riparian zone
- No observations of primary contact recreation in basic survey





- Subscribe to our listserve on the Water Quality Standards web page (SWQSAWG)
- Contact Information
 - Joe.Martin@tceq.texas.gov
 - 512-239-3163

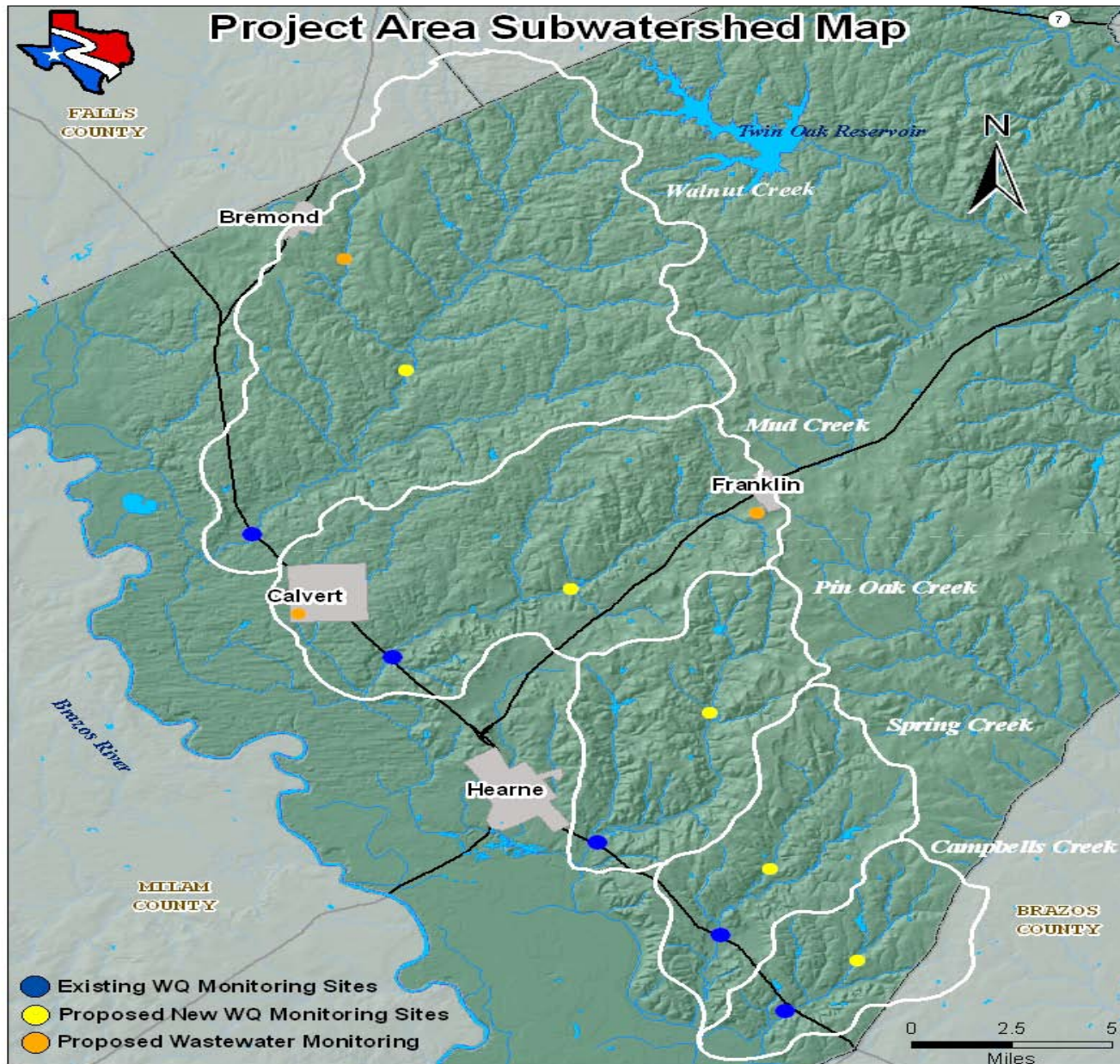


Little Brazos River Tributaries Bacteria Assessment Project

Recreational Use Attainability Analysis

March 29, 2012

Waco, Texas





Waterbodies

- Campbells Creek (1242I)
- Mud Creek (1242K)
- Pin Oak Creek (1242L)
- Spring Creek (1242M)
- Walnut Creek(1242O)

Next Steps

- Multiple portions are associated with this project.
 - SELECT, LDC, BST, Water Quality Monitoring
- TSSWCB plans to hold a Public Meeting to share all of the information with stakeholders.



Loren Warrick
Project Manager

Texas State Soil and Water Conservation Board
Statewide Resource Management Team

PO Box 658
Temple, TX 76503
254-773-2250 v
254-773-3311 f

lwarrick@tsswcb.state.tx.us
<http://www.tsswcb.state.tx.us/>

*Authorization for use or reproduction of any original material
contained in this presentation is freely granted.
TSSWCB would appreciate acknowledgement.*