

DRAFT 2010 Integrated Report

Highlights and Brazos Basin Summaries

Greatest Hits of the DRAFT Assessment!

Jill Csekitz

TCEQ Surface Water Quality Monitoring Team



Provisional Information

- Information is in DRAFT status
 - Numbers presented may change
 - Do not use this information for reporting
-
- DRAFT 2010 Integrated Report
www.texaswaterdata.org



2010 DRAFT IR Timeline

- Started: June 2009
- Pre-Draft to Data Providers: December 15, 2009
- Out for Public Comment: Feb 5, 2010
- End of Public Comment: March 8, 2010
- Target EPA submittal: June, 2010



General Assessment Information

- 2,453 water bodies assessed
- 4 million data points
- 276 water quality parameters reviewed
 - Ex. dissolved oxygen, E. coli, toxaphene in fish tissue
- 2000 Water Quality Standards
- New:
 - biological methods
 - metals in water
 - beach watch
 - no longer assessing finished drinking water

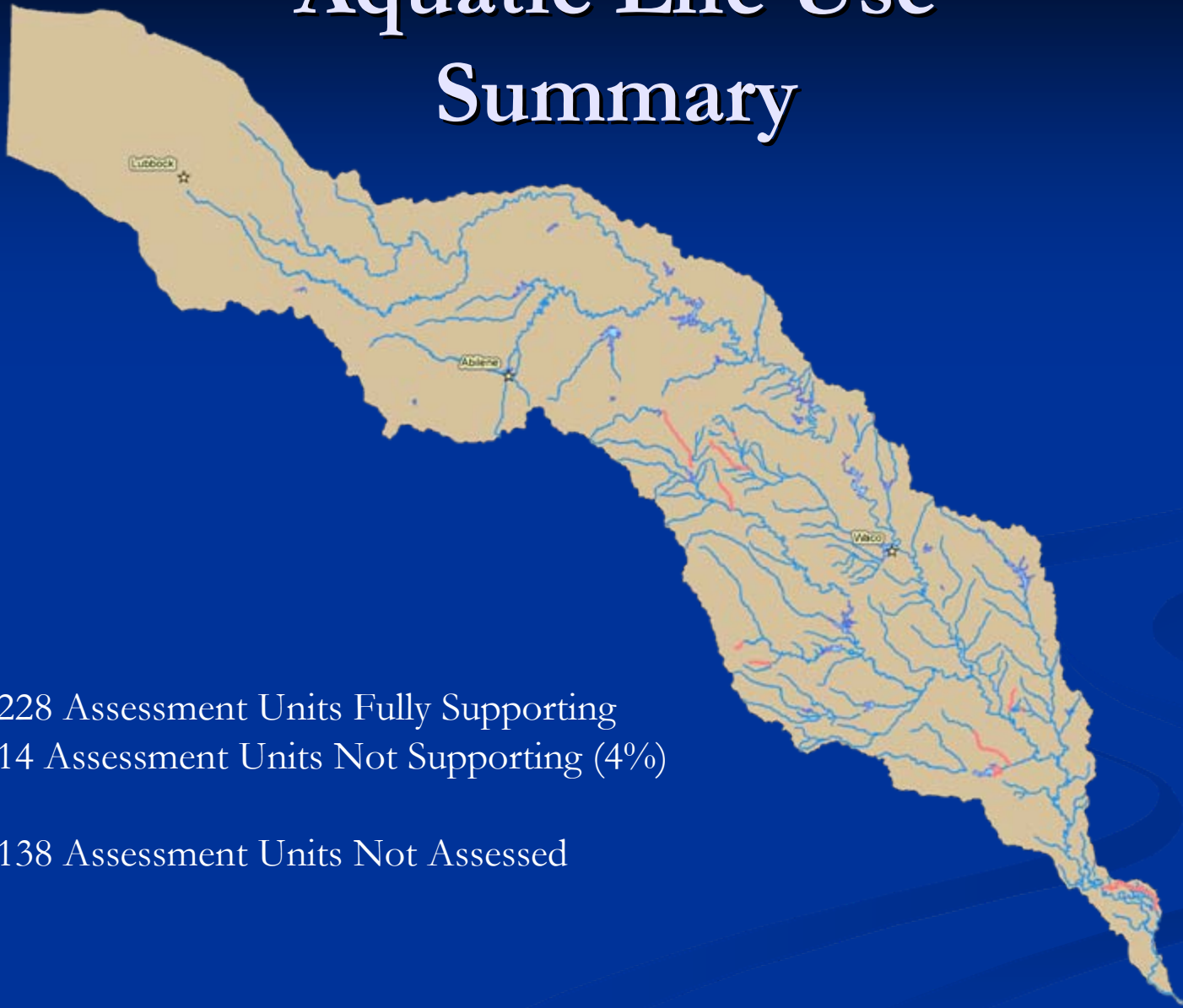


Brazos Assessment

- Largest River Basin in TX
 - (size of Ohio)
- 228 Streams, Rivers, and Reservoirs Surveyed
- 57 Major Water bodies (Classified Segments)
- 39 Appendix D waterbodies
- 132 water bodies with presumed uses (Unclassified Segments)
- 380 Assessment Units



Aquatic Life Use Summary



- 228 Assessment Units Fully Supporting
- 14 Assessment Units Not Supporting (4%)
- 138 Assessment Units Not Assessed



Contact Recreation Use Summary



-138 Assessment Units Fully Supporting

-90 Assessment Units Not Supporting (24%)

*E. coli bacteria

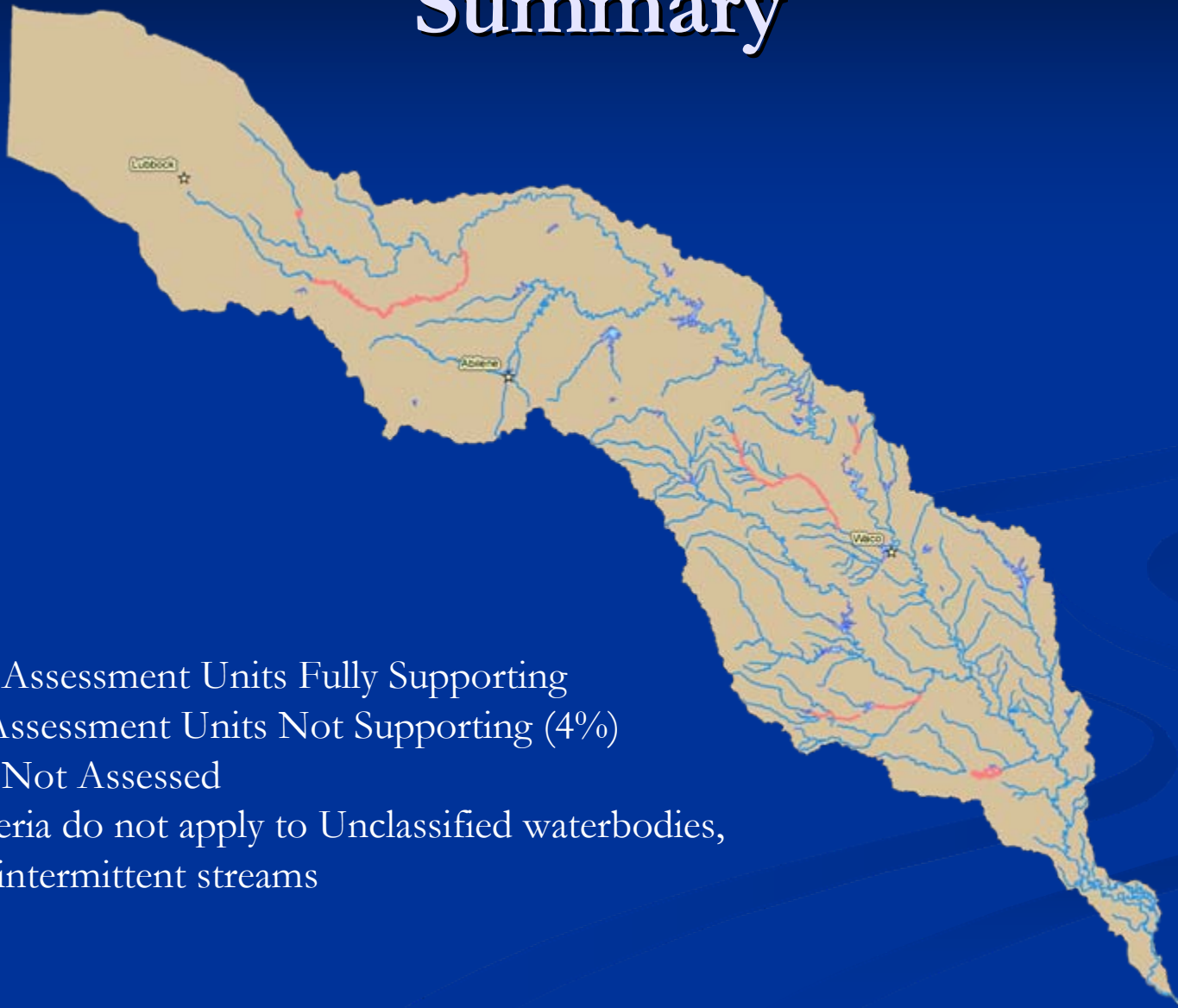
-152 Assessment Units Not Assessed

-Deferred Listings: Potential new listings where:

$126 < E. coli \text{ geomean} < 206$



General Use Summary



- 147 Assessment Units Fully Supporting
- 16 Assessment Units Not Supporting (4%)
- 217 Not Assessed
- Criteria do not apply to Unclassified waterbodies,
Ex: intermittent streams



Fish Consumption Use Summary



-1 Assessment Units Not Supporting (0.3%)

-Lake Alan Henry Fish Advisory

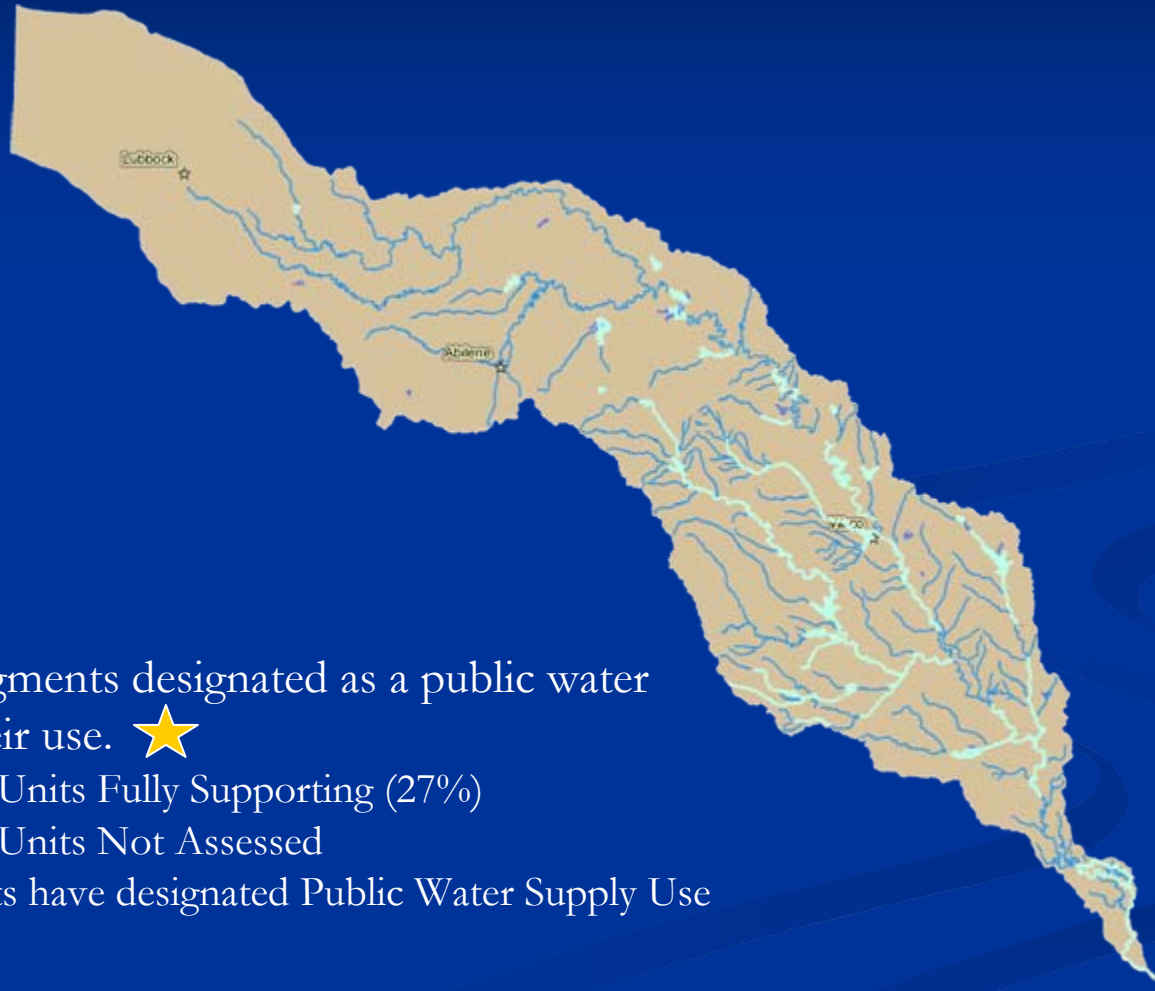
-<http://www.dshs.state.tx.us/news/releases/20100203.shtm>

-30 Assessment Units Fully Supporting

-349 Not Assessed (not a lot of data)



Public Water Supply Use



- 100% of all segments designated as a public water supply meet their use. ★
- 104 Assessment Units Fully Supporting (27%)
- 276 Assessment Units Not Assessed
- Only 48 segments have designated Public Water Supply Use



DRAFT New Listings

SegID	New SegID?	Segment Name	Parameter	Category
1211A	No	Davidson Creek (unclassified water body)	depressed dissolved oxygen	5b
1212A	No	Middle Yegua Creek (unclassified water body)	bacteria	5b
1217B	No	Sulphur Creek (unclassified water body)	depressed dissolved oxygen	5c
1226H	No	Alarm Creek (unclassified water body)	bacteria	5b
1226M	No	Little Green Creek (unclassified water body)	bacteria	5b
1232A	No	California Creek (unclassified water body)	bacteria	5c
1240	No	White River Lake	sulfate	5b
1241	No	Double Mountain Fork Brazos River	total dissolved solids	5b
1241B	No	Lake Alan Henry (unclassified water body)	mercury in edible tissue	5c
1242F	No	Pond Creek (unclassified water body)	bacteria	5c
1245E	Yes	Flewellen Creek (unclassified water body)	bacteria	5a
1245F	Yes	Alcom Bayou (unclassified water body)	bacteria	5a
1245I	Yes	Steep Bank Creek (unclassified waterbody)	bacteria	5a
1245J	Yes	Stafford Run (unclassified water body)	bacteria	5a
1248	No	San Gabriel/North Fork San Gabriel River	chloride	5b
1255D	No	South Fork North Bosque River (unclassified water body)	bacteria	5b
1255I	No	Dry Branch (unclassified water body)	bacteria	5b



DRAFT De-Listings

Segment Name	AU_ID	Parameter	Reason for De-Listing
Big Creek	1202J_01	Impaired Fish Community	Meets / Revised Procedure
Lake Granbury	1205_01 1205_02 1205_03 1205_04 1205_05	Chloride	Meets
Brazos River Below Possum Kingdom Lake	1206_01 1206_02 1206_03	Chloride	Meets
Brazos River Below Possum Kingdom Lake	1206_01 1206_02	Impaired Macro-Benthic Community	Meets / Revised Procedure
Lampasas River Above Stillhouse Hollow Lake	1217_04 1217_05	Bacteria	Error Error
Pecan Creek	1221C_01	Bacteria	Meets
Paluxy River / North Paluxy	1229_01 1229_02 1229_03	Chloride TDS Sulfates	Meets
Salt Fork Brazos River	1238_01 1238_02 1238_03	Chloride	Meets
Tehuacana Creek	1242N_01	Bacteria	Meets
Wasp Creek	1246E_01	Bacteria	Meets



Questions?



Double Mountain Fork Brazos River, Rotan TX

