

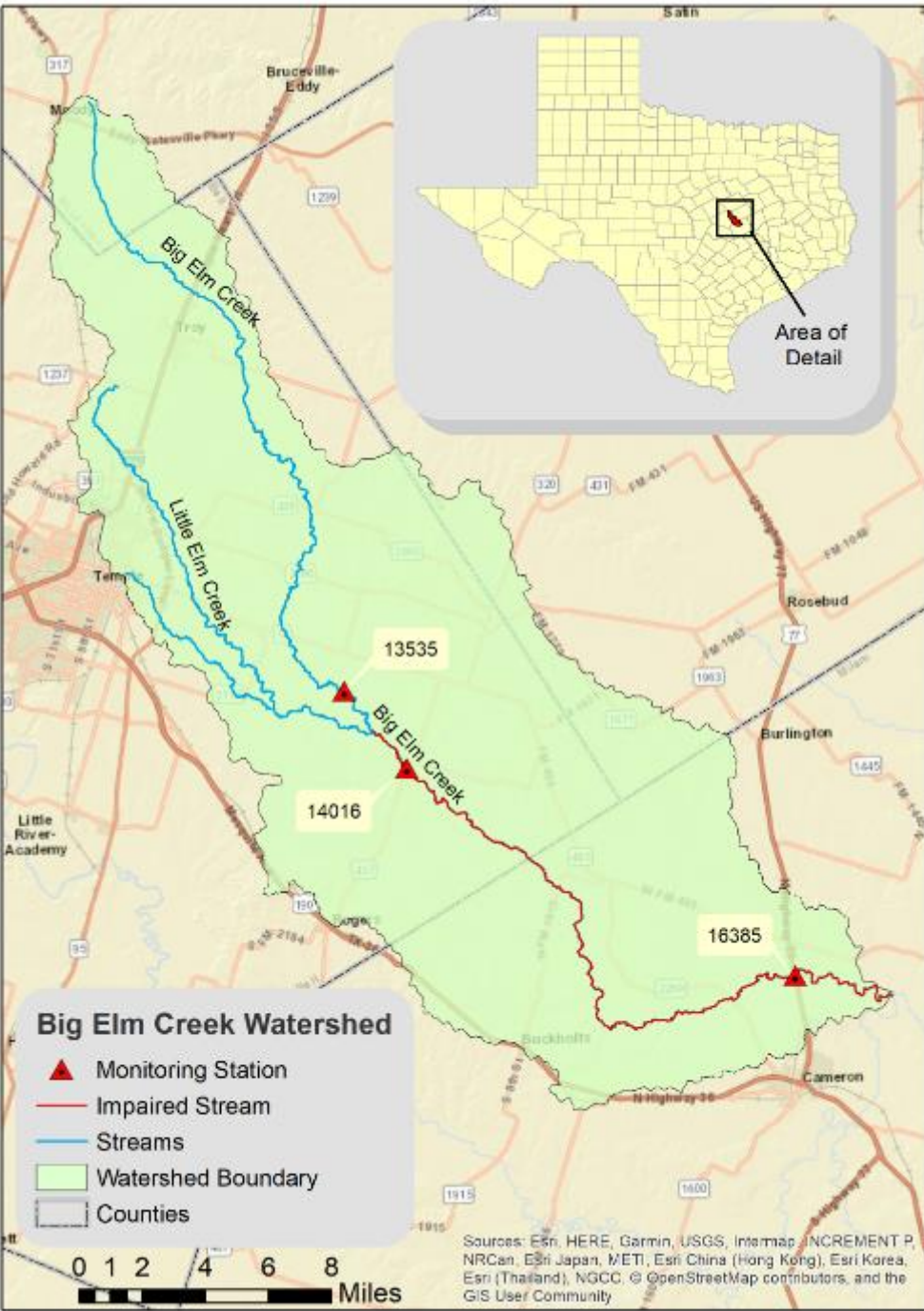
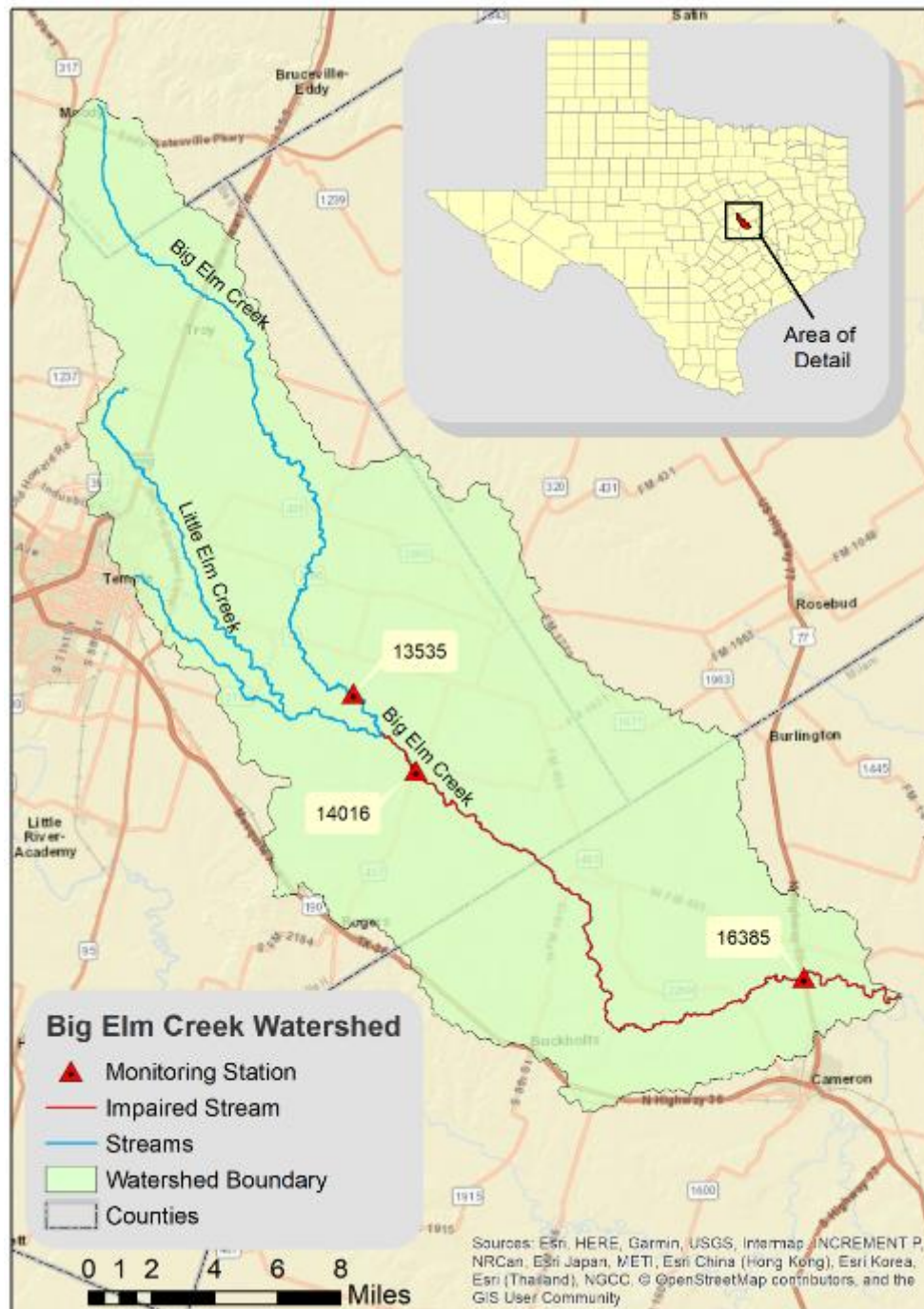
Big Elm Creek Watershed Protection Plan

Brazos River Authority CRP Annual Meeting

Ed Rhodes

Texas A&M AgriLife Research,
Texas Water Resources Institute
ecrhodes@tamu.edu



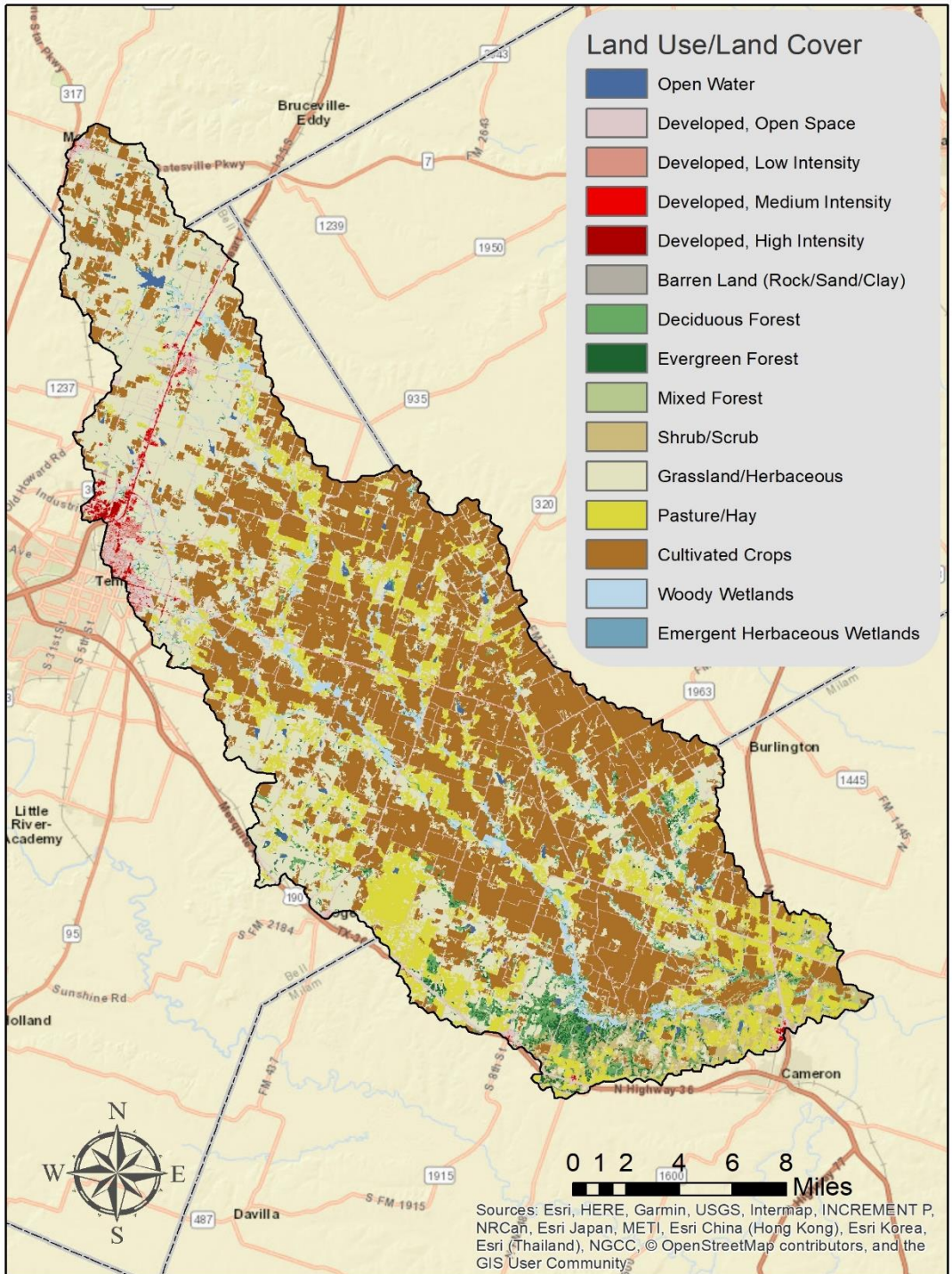


Big Elm Creek Watershed

- ▲ Monitoring Station
- Impaired Stream
- Streams
- ▭ Watershed Boundary
- ▭ Counties



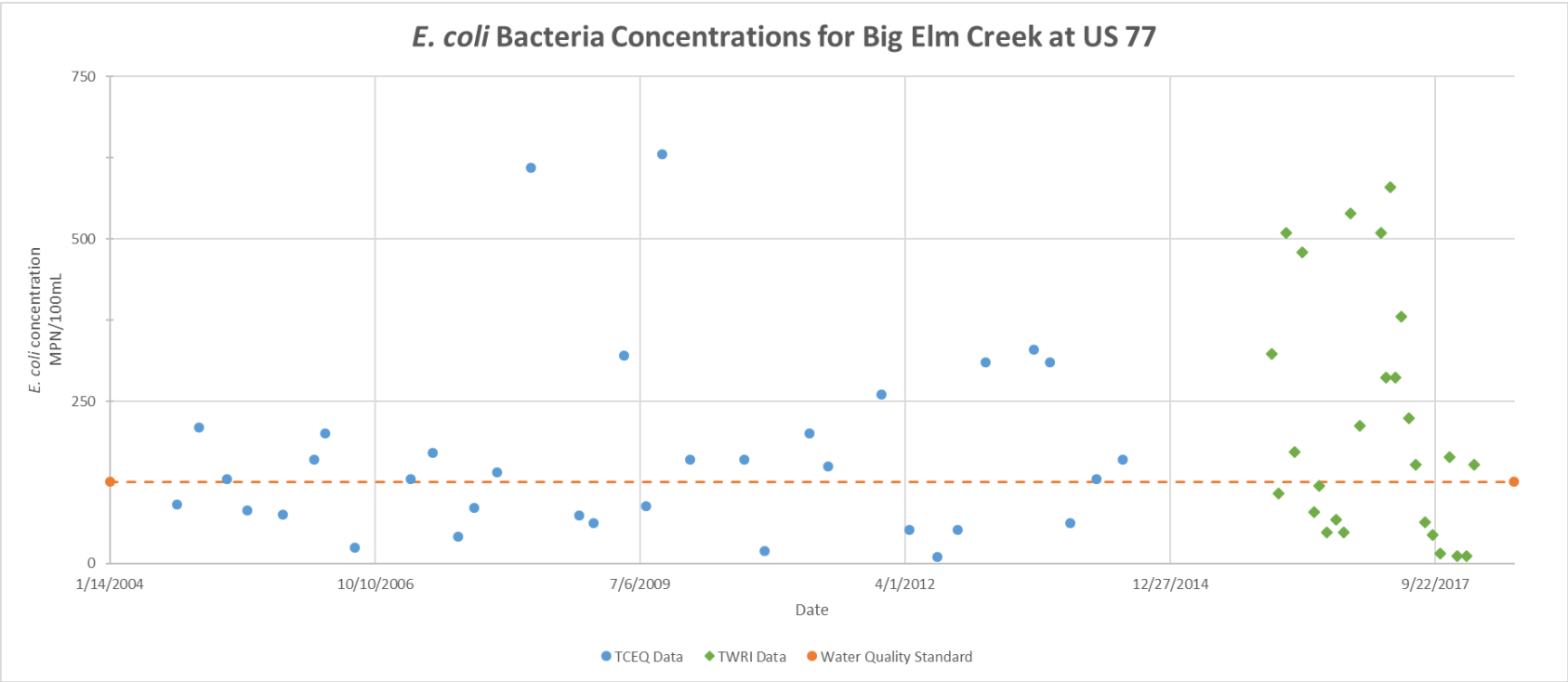
Sources: Esri, HERE, Garmin, USGS, Intermap, INCREMENT P, NRCan, Esri Japan, METI, Esri China (Hong Kong), Esri Korea, Esri (Thailand), NGCC, © OpenStreetMap contributors, and the GIS User Community



Big Elm Creek Impairment

- ⊙ Impaired for not meeting primary contact recreation bacteria standard
- ⊙ **Listed on 303(d) list since 2010**
- ⊙ **Sept 2004 - Jan 2015 (TCEQ) Data = 152.05 MPN/100mL**
- ⊙ **Dec 2005 – Nov 2012 Assessment Period = 135.88 MPN/100mL**
- ⊙ **Dec 2015 – Feb 2018 (TWRI) Data = 144.09 MPN/100mL**

Big Elm Creek Impairment



Watershed Protection Plan

- ⊙ Currently underway
- ⊙ Stakeholder Participation
 - ⊙ Landowners
 - ⊙ County Agents
 - ⊙ NRCS
 - ⊙ Soil Board
 - ⊙ TCEQ
 - ⊙ TWRI
 - ⊙ City of Temple
 - ⊙ Texas A&M Forest Service

Current Timeline

- ⦿ Stakeholder Meetings
 - ⦿ Thru September 2019
 - ⦿ Next Meeting April 16th
- ⦿ Fall 2019-Aug 2020
 - ⦿ Agency Review
 - ⦿ Follow up meetings
- ⦿ Sept 2020
 - ⦿ Begin work on Implementation

Questions?

Ed Rhodes

Research Associate and Project Manager
Texas Water Resources Institute
ecrhodes@tamu.edu