

The Lampasas River Watershed Partnership

Lisa Prcin

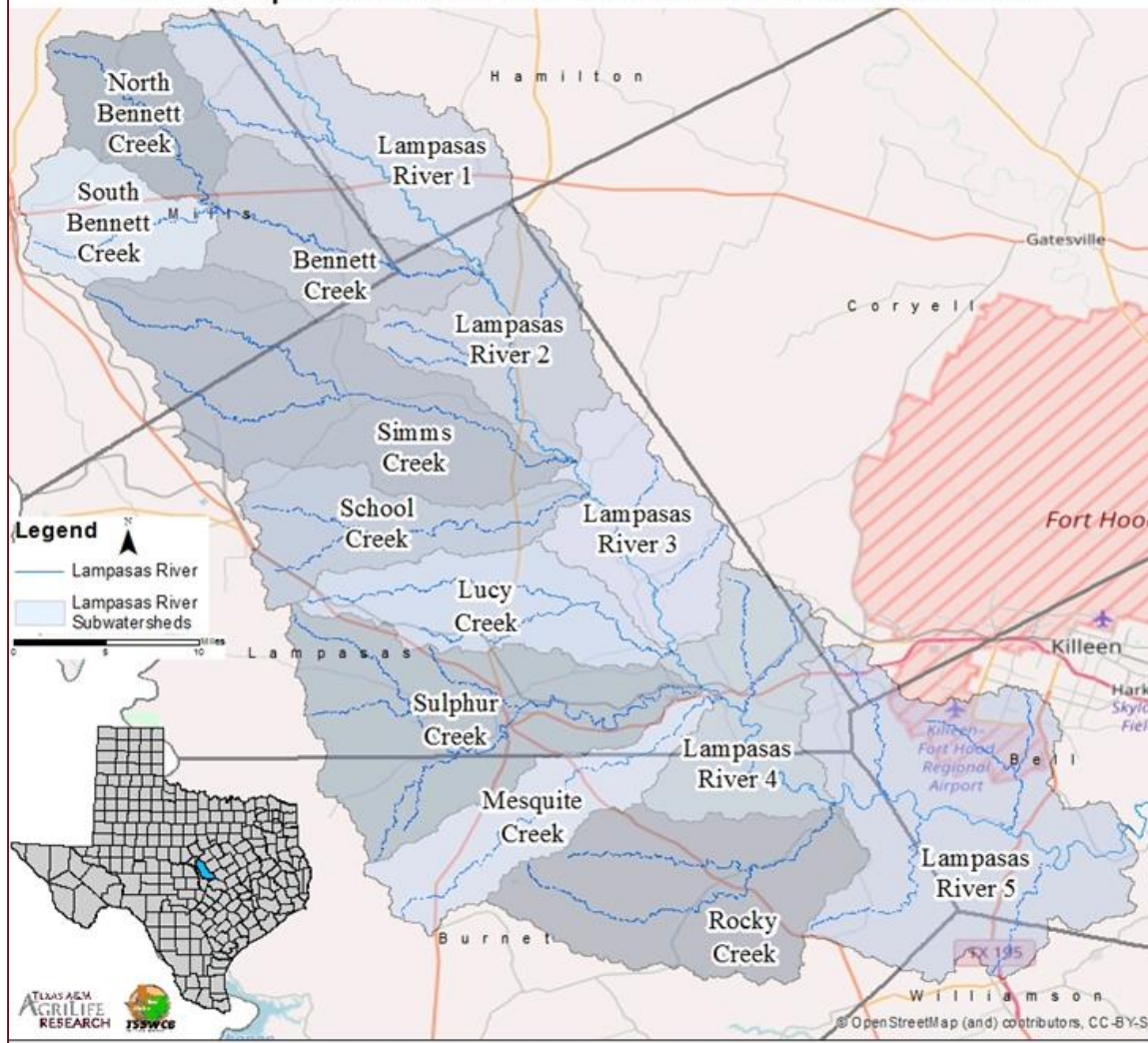
Senior Research Associate | Watershed Coordinator

Texas A&M AgriLife Research at

Blackland Research & Extension Center



The Lampasas River Watershed and Subwatersheds



The Lampasas River

- Identified as impaired for not meeting Contact Recreation standards in 2002
- Clean Water Act § 319(h) grant from TSSWCB and U.S. EPA to address the bacteria impairment and other pollutant concerns
- Lampasas River Watershed Partnership formed and began development of WPP in 2009
- WPP was approved by stakeholders and accepted by EPA in 2013
- Implementation of WPP has been ongoing since 2013

Implementation of WPP: Education and Outreach

- ◉ **Continued Coordinating Implementation of the Lampasas River Watershed Protection Plan**
- ◉ Watershed Coordinator to seek and leverage funds for implementation and facilitate education and outreach opportunities



LONE STAR HEALTHY STREAMS
http://lhc.tamu.edu

The Lone Star Healthy Streams program educates Texas livestock producers and landowners on how to best protect Texas waterways from bacterial contributions associated with livestock production and fecal loads. There is no cost to attend.

July 29, 2015: 10:00am-3:00pm
Copperas Cove ISD Board Room
703 W. Avenue D
Copperas Cove, TX
***3 General CEUs available for pesticide applicators**

Workshop presentations will focus on the Lampasas River Watershed and will discuss basic watershed functions, water quality, and specific best management practices that can be implemented to help minimize bacterial contamination originating from beef cattle, horses, and feral hogs.

Pre-register for the workshop by going to:
<http://lhc.tamu.edu/workshops>



RIPARIAN AREA MANAGEMENT WORKSHOP



Parrie Haynes Ranch
2419 Gann Branch Road
Killeen, Texas
June 11, 2015

RSVP by June 9 to Lampasas River Watershed Partnership
(254) 774-6008 or lprcin@brc.tamug.edu

FREE one-day course consists of both classroom and field portion.

The workshop will focus on:

- *The Function of Riparian Areas
- *The Role of Riparian Vegetation
- *Assessment of Riparian Health
- *Assistance for Improving or Restoring Impaired Sites

8:00 - 8:30 Sign-In
8:30 - 12:00 Classroom
12:00 - 1:00 Lunch (provided)
1:00 - 3:30 Field

3 TDA Pesticide Applicators License CEUs are available through Texas A&M AgriLife Extension Service - Bell County

Detailed agenda and additional maps may be found at www.lampasasriver.org




MARCH 10, 2016
SAVING FOR A RAINY DAY
RAINWATER HARVESTING FOR THE HOMEOWNER WORKSHOP

Rainwater Harvesting

Rainwater harvesting is a viable alternative water resource for irrigation, wildlife, livestock and indoor use. You can harvest 600 gallons of rainwater from a 1,000 square foot roof with a 1 inch of rain. Learn more about how to effectively harvest rainwater and its benefits by joining us for this workshop.

6:00 PM TO 8:00 PM

COPPERAS COVE PUBLIC LIBRARY
505 SOUTH MAIN, COPPERAS COVE, TX




GLASS IS FREE
BUILD AND TAKE HOME YOUR OWN BORN BARREL FOR \$50

THE FIRST 20 RAIN BARRELS RESERVED WILL BE \$50 LIFE SPONSORED BY KEEP COPPERAS COVE BEAUTIFUL

PRE-REGISTER TO LISA
PRCIN AT 254-774-6008 OR
lprcin@brc.tamug.edu

Hosted by
The Lampasas River Watershed Partnership
&
Keep Copperas Cove Beautiful

Texas A&M AgriLife Research & Extension

How do I know if my septic system is working properly?
If I ignore my septic system, will everything be all right?
Are there any other options?

Join us at a **FREE** workshop for answers!

Homeowner's Maintenance of Septic Systems

Monday, September 21, 2014
6:00 PM - 8:00 PM
Mills County State Bank
1101 Parker St
Goldthwaite, Texas
Please Pre-Register to:
lprcin@brc.tamug.edu or 254-774-6008



This course provides a basic understanding of the operational and maintenance activities of septic systems and explains how your day to day activities impact your septic system. Presentations cover the treatment processes, health and safety considerations, and how to maintain your system. This course also provides answers to the most frequently asked septic system questions, including when to pump out a tank and what can or cannot go down the drain.

For More Information Contact:

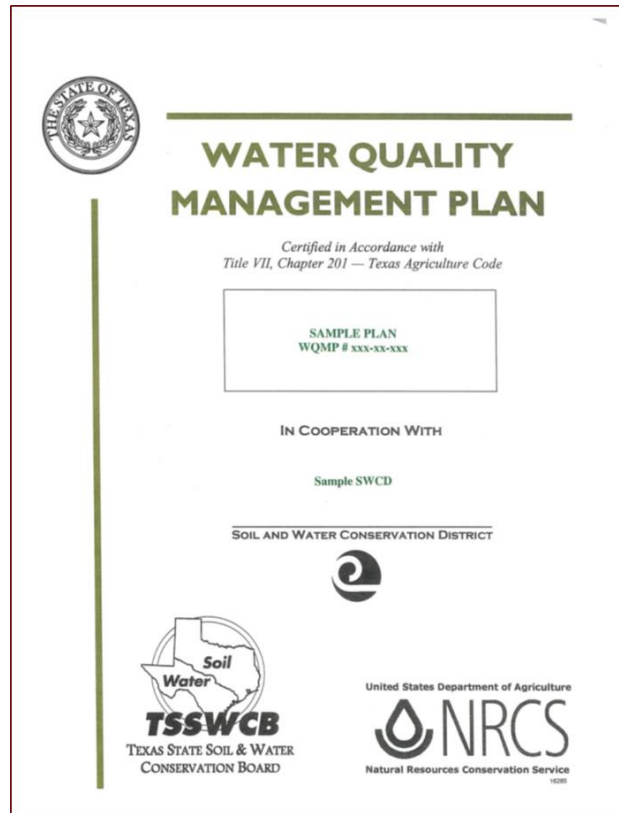
Lisa Prcin, Watershed Coordinator
254-774-6008 | lprcin@brc.tamug.edu
<http://www.lampasasriver.org/>
<http://ossf.tamu.edu/>

Brought to you in support of:

Lampasas River Watershed Protection Plan
BY:
The Lampasas River Watershed Partnership,
Texas A&M AgriLife Research &
Texas A&M AgriLife Extension Service

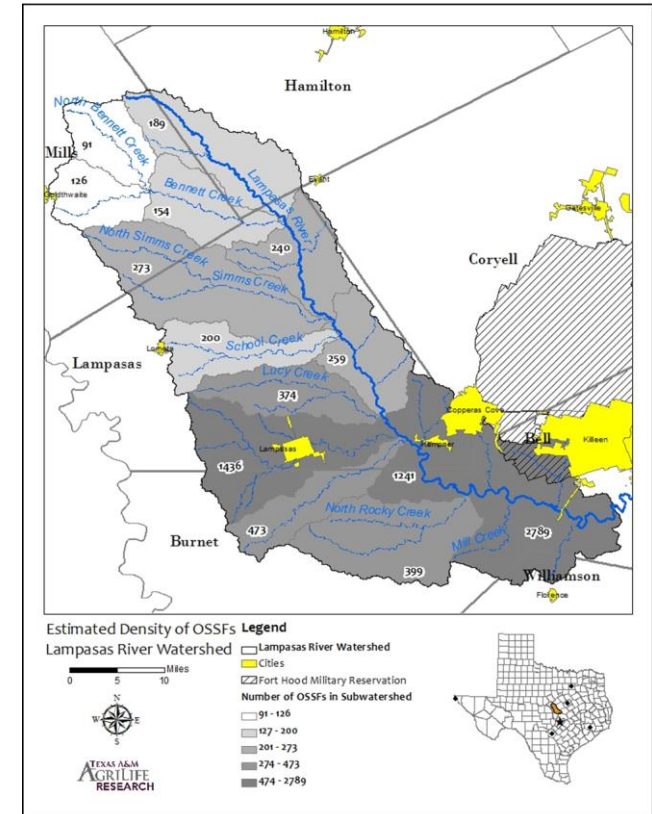
Implementation of WPP – Agricultural NPS

- Technical and financial assistance through local Soil and Water Conservation District for landowners
- Develop voluntary **Water Quality Management Plans**

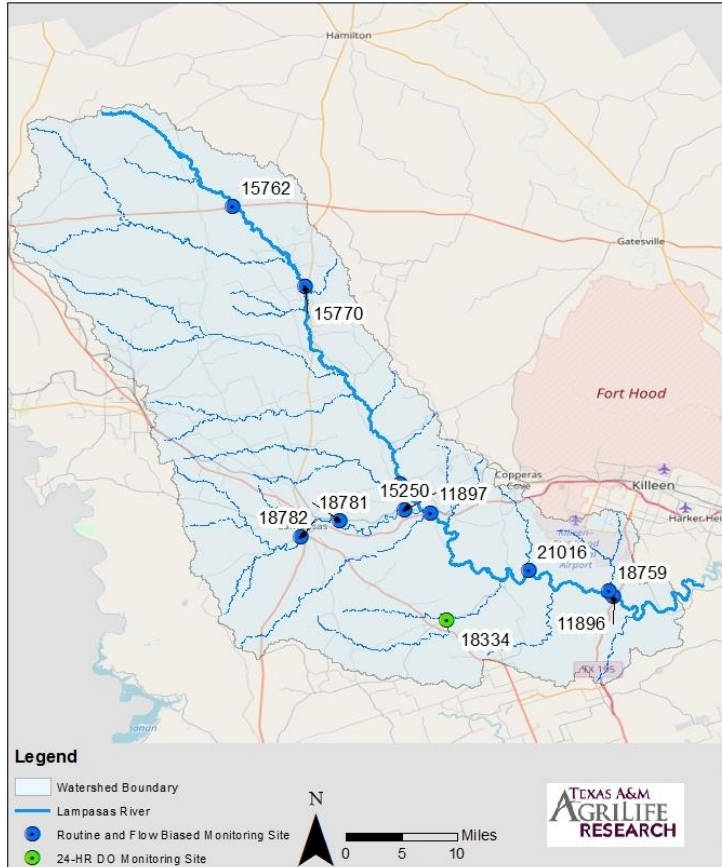


Implementation of WPP: On-Site Sewage Facility

- ◉ Inventory and Mapping of OSSFs in the Lampapas River Watershed
- ◉ The Lampapas OSSF Database project will be based on the methodology created for the 19 counties along the Texas Coastal Zone
- ◉ New project will prioritize areas and repair and or replace 10 OSSFs within the watershed.

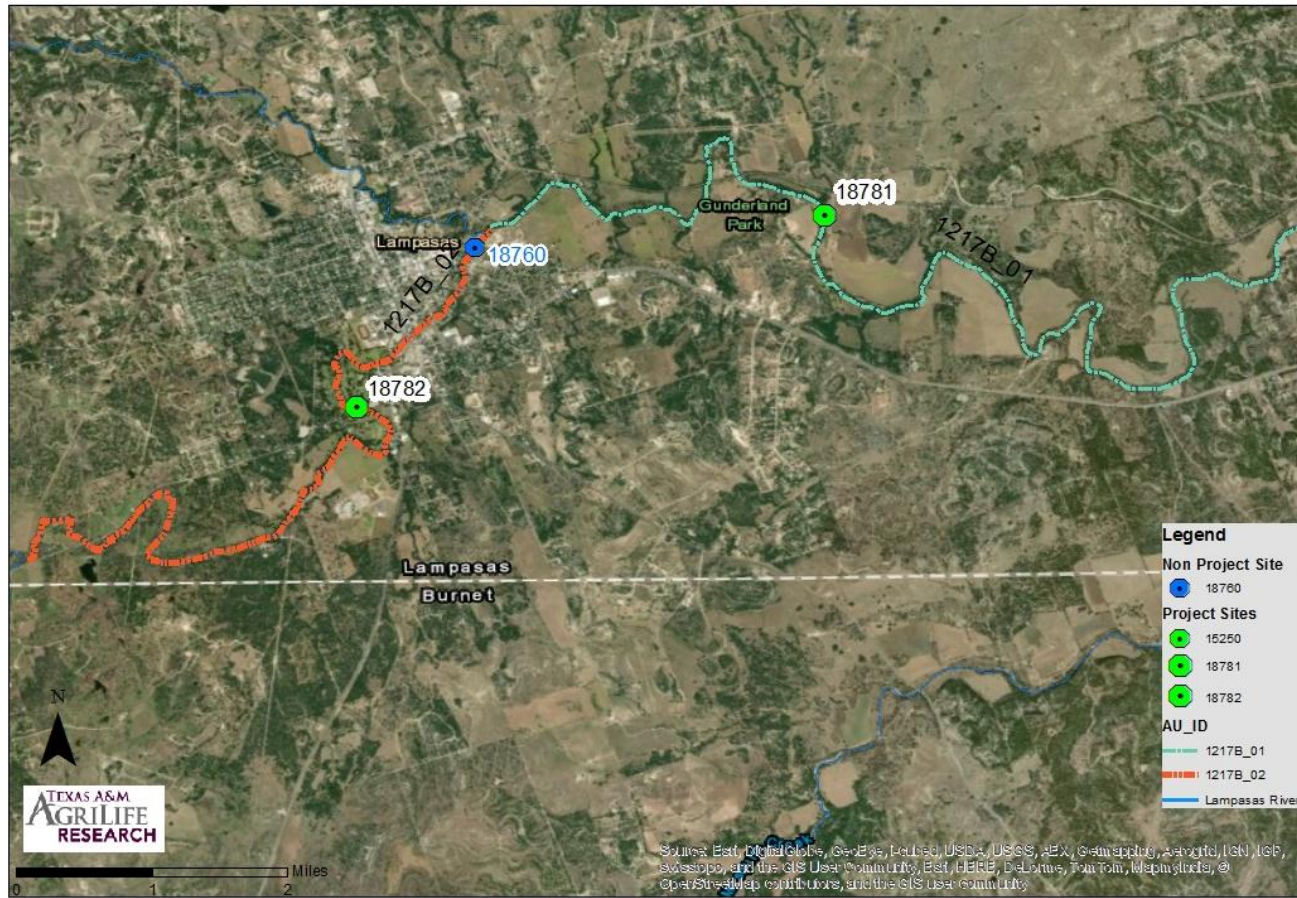


Assessment for the WPP: Surface Water Monitoring

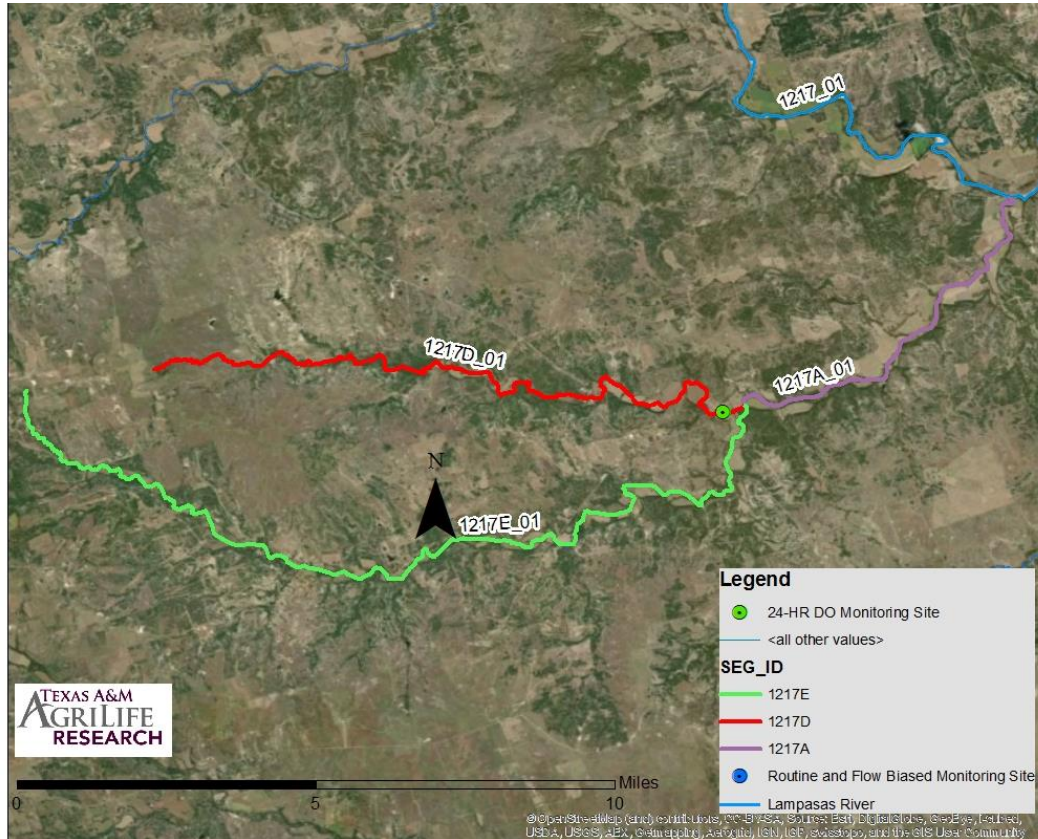


Water Quality Concerns – Sulphur Creek

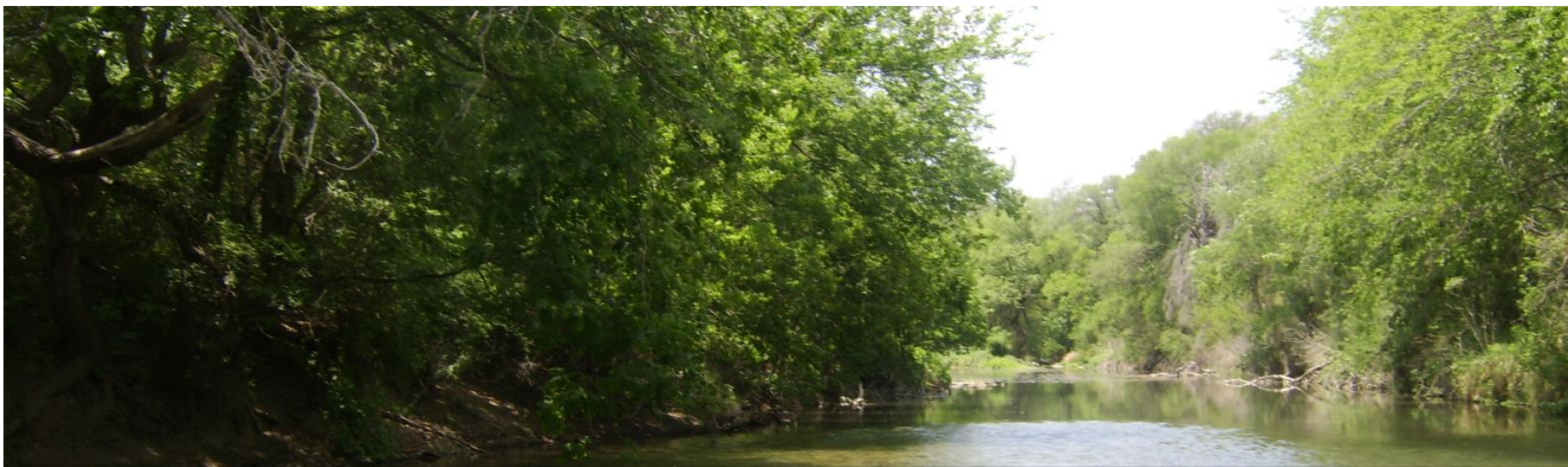
- Segment 1217B_02 (upstream)
- Identified as not supporting Contact Recreation standards on Draft 2016 IR



Water Quality Concerns – Sulphur Creek



- Segment 1217D_01 (upstream)
- Identified as not meeting DO standards
- Began collection of 24 hour DO sampling events in Summer 2018



The facilitation of the Lampasas River Watershed Partnership and development of the watershed protection plan is funded by the Texas State Soil and Water Conservation Board through a Clean Water Act §319(h) grant from the U.S. Environmental Protection Agency.

Lisa Prcin

Texas A&M AgriLife Research

720 E Blackland Rd, Temple, TX 76502

(254) 774-6008 • lprcin@brc.tamug.edu • www.lampasasriver.org

Thank You