



***Update on Waterbodies Not
Meeting State Criteria
and
FY2018 Proposed Monitoring***

***Presented by
Jenna Olson
Water Quality Programs Coordinator***



Impairments - Basin Overview

In the 2014 IR:

Out of a total of 205 waterbodies (336 Assessment units (AUs)) evaluated...

- 78 waterbodies (105 AUs) are listed as impaired on the draft 2014 303(d) List ($\approx 38\%$ / $\approx 31\%$)
- 66 waterbodies (78 AUs) are listed as impaired for elevated bacteria ($\approx 32\%$ / $\approx 23\%$)
- 8 waterbodies (9 AUs) are listed for dissolved oxygen Impairment ($\approx 4\%$ / $\approx 3\%$)
- 4 waterbodies (6 AUs) are listed as impaired for chloride, sulfate and/or TDS ($\approx 2\%$ / $\approx 2\%$)
- 99 waterbodies (193 AUs) are identified as having concerns based on screening levels for algal growth and/or elevated nutrients ($\approx 48\%$ / $\approx 57\%$)
- 4 waterbody AUs were added to the impaired list and 14 waterbody AUs were de-listed (as compared to the 2012 IR)



General Monitoring Strategy for FY 2018

- **Maintain current routine monitoring effort throughout the Basin. BRA currently routinely monitors 107 stations.**
 - **There is potential to add additional stations if they can be incorporated into our current run schedule**
 - **In instances where stations are dropped, we will negotiate in the Coordinated Monitoring Meeting to pick up stations and maintain effort throughout the basin**
- **BRA will continue instream flow based biological monitoring in support of the BRA's Water Management Plan Environmental Studies and share data with CRP/SWQM as possible**
- **BRA will perform biological assessments on two stations on Allen's Creek and on the long-term station, the Bosque River at Cooper's Crossing**

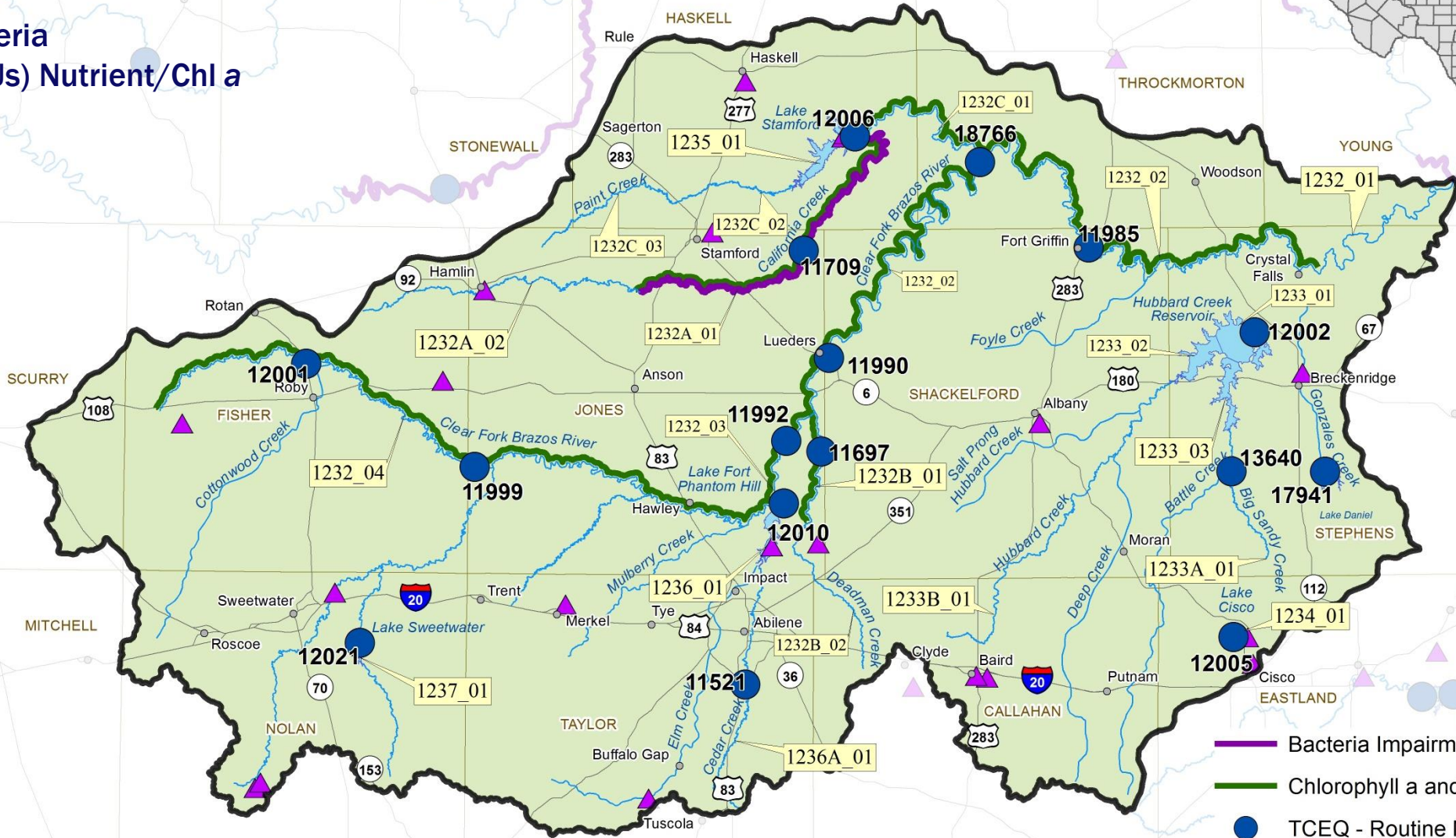
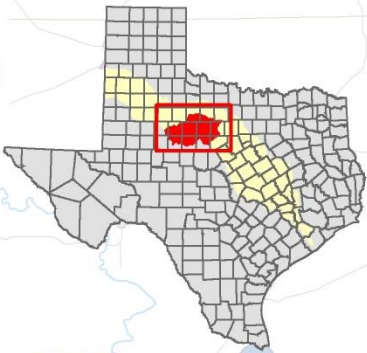




Watershed of the Clear Fork of the Brazos River

Proposed FY18 Water Quality Monitoring and 2014 IR Status

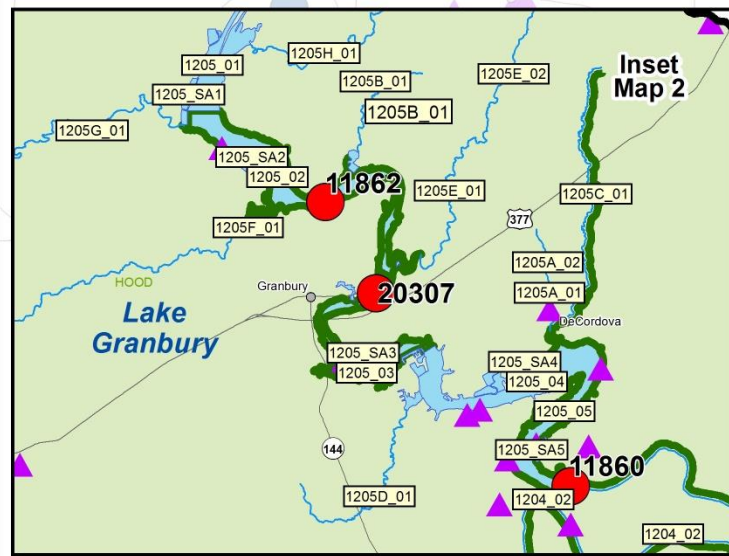
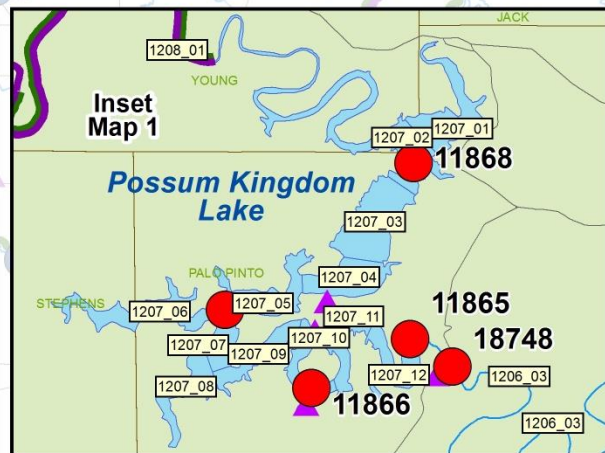
- 1 Bacteria
- 4 (6 AUs) Nutrient/Chl a



- Bacteria Impairment
- Chlorophyll a and/or Nutrient Concern
- TCEQ - Routine Monitoring Station
- Wastewater Outfall
- Watershed Boundary



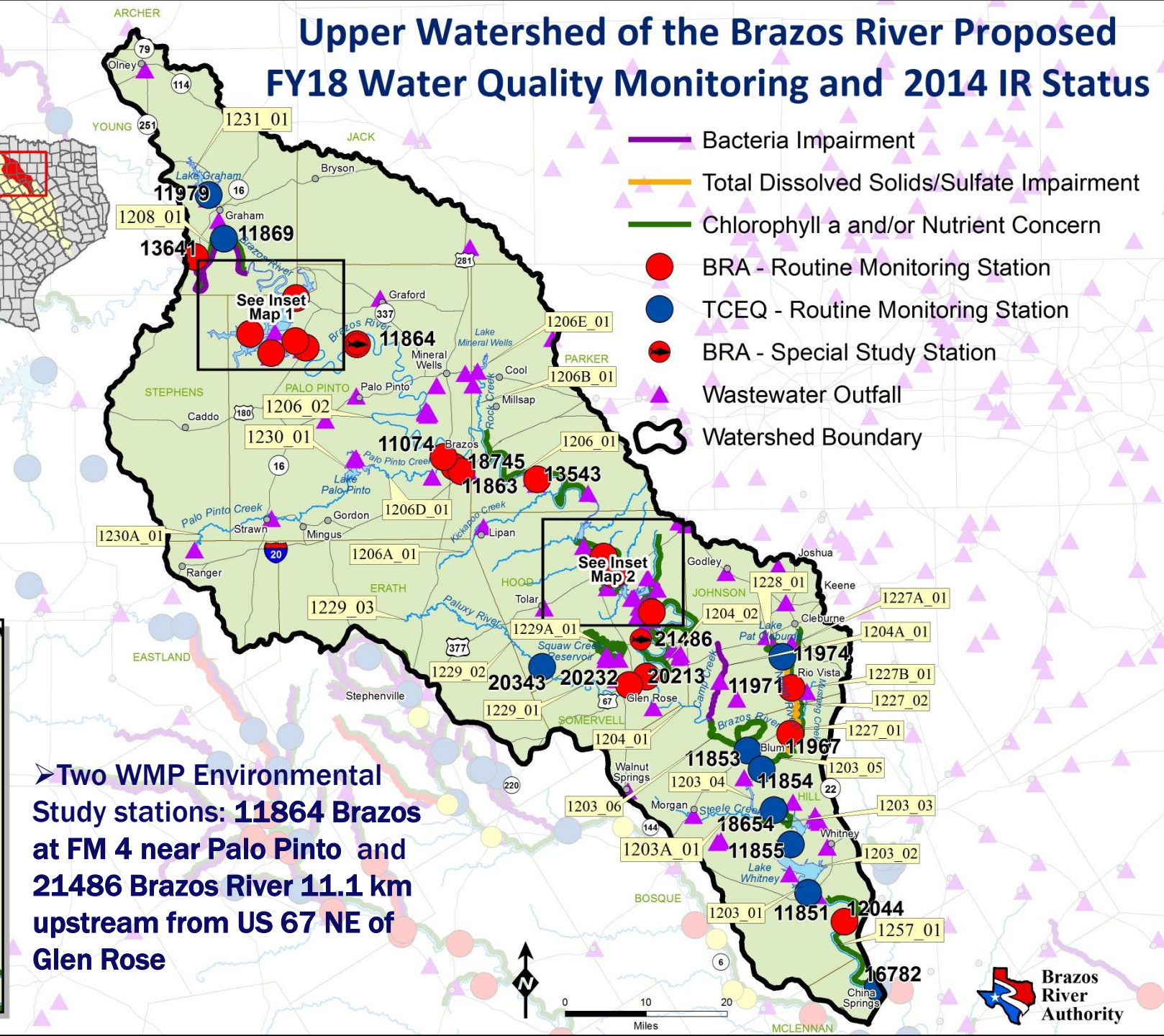
- 2 Bacteria
- 1 (2 AUs) TDS/Sulfate
- 11 (16 AUs) Nutrient/Chl a



Upper Watershed of the Brazos River Proposed FY18 Water Quality Monitoring and 2014 IR Status

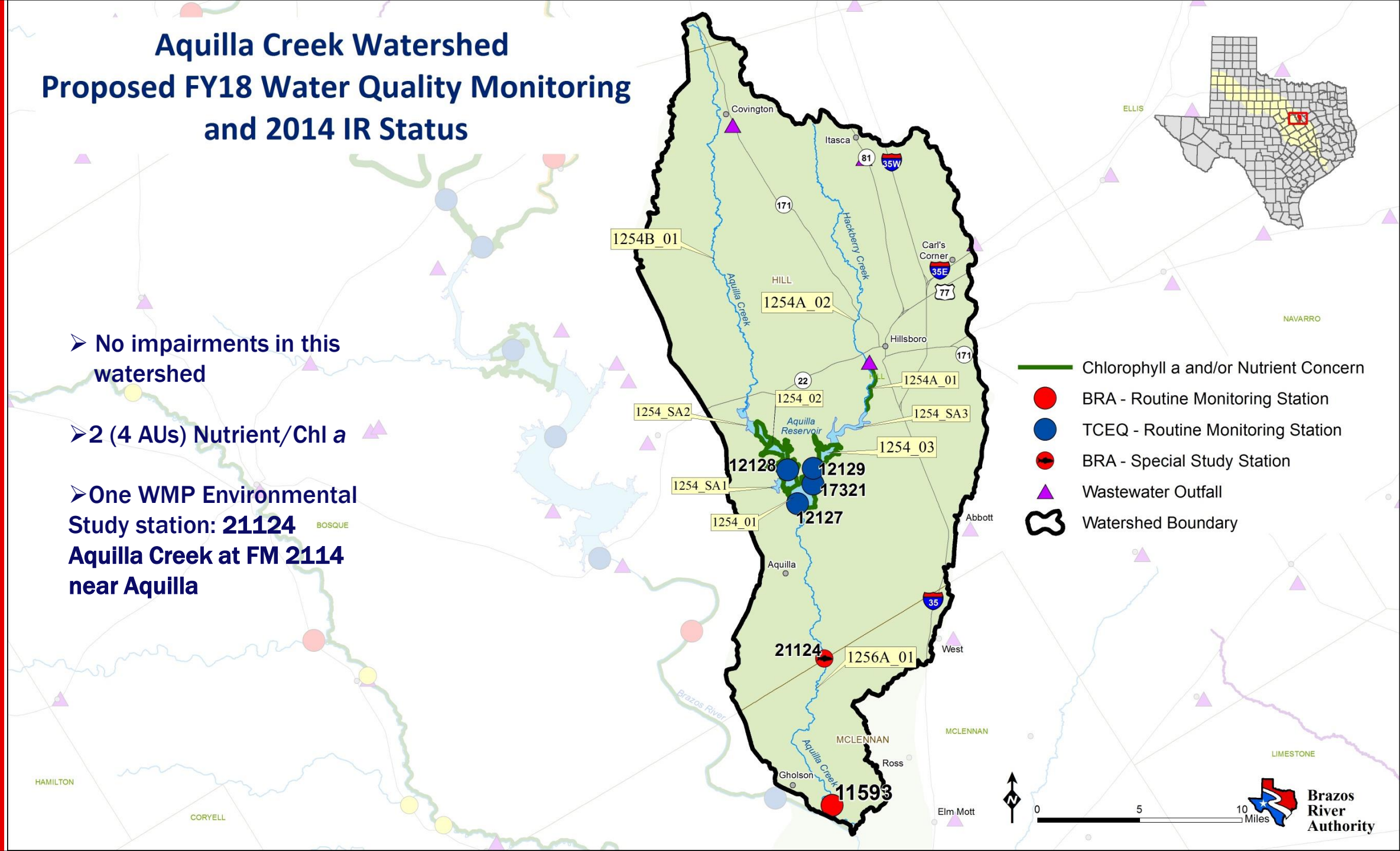
- Two WMP Environmental Study stations: 11864 Brazos at FM 4 near Palo Pinto and 21486 Brazos River 11.1 km upstream from US 67 NE of Glen Rose

- Bacteria Impairment
- Total Dissolved Solids/Sulfate Impairment
- Chlorophyll a and/or Nutrient Concern
- BRA - Routine Monitoring Station
- TCEQ - Routine Monitoring Station
- BRA - Special Study Station
- Wastewater Outfall
- Watershed Boundary



Aquilla Creek Watershed Proposed FY18 Water Quality Monitoring and 2014 IR Status

- No impairments in this watershed
- 2 (4 AUs) Nutrient/Chl a
- One WMP Environmental Study station: **21124**
Aquilla Creek at FM 2114 near Aquilla



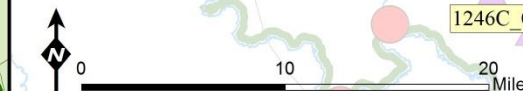
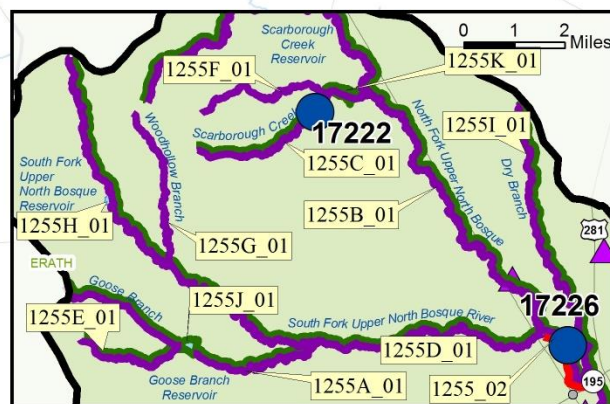
- Chlorophyll a and/or Nutrient Concern
- BRA - Routine Monitoring Station
- TCEQ - Routine Monitoring Station
- BRA - Special Study Station
- Wastewater Outfall
- Watershed Boundary



Bosque River Watershed Proposed FY18 Water Quality Monitoring and 2014 IR Status

- 16 (17 AUs) Bacteria
2 DO
21 (25 AUs) Nutrient/Chl a
- 15 waterbodies have recommendations resulting from RUAAs
none are officially changed in standards yet
- Potential for 8 waterbodies to be removed from the 303d list for
bacteria

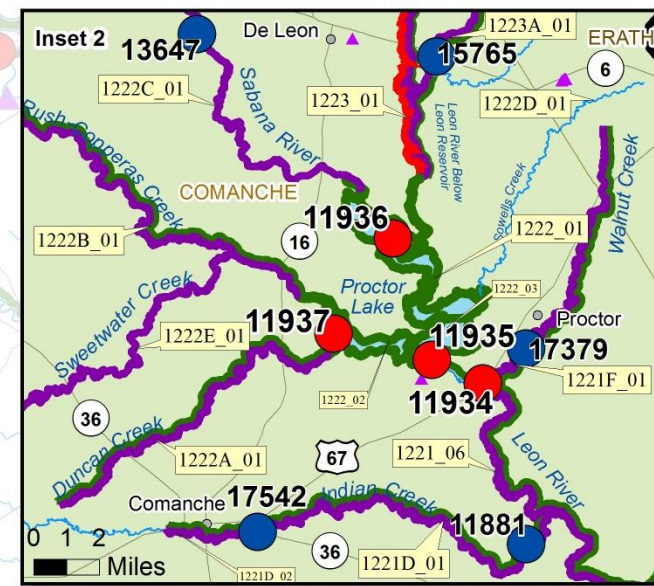
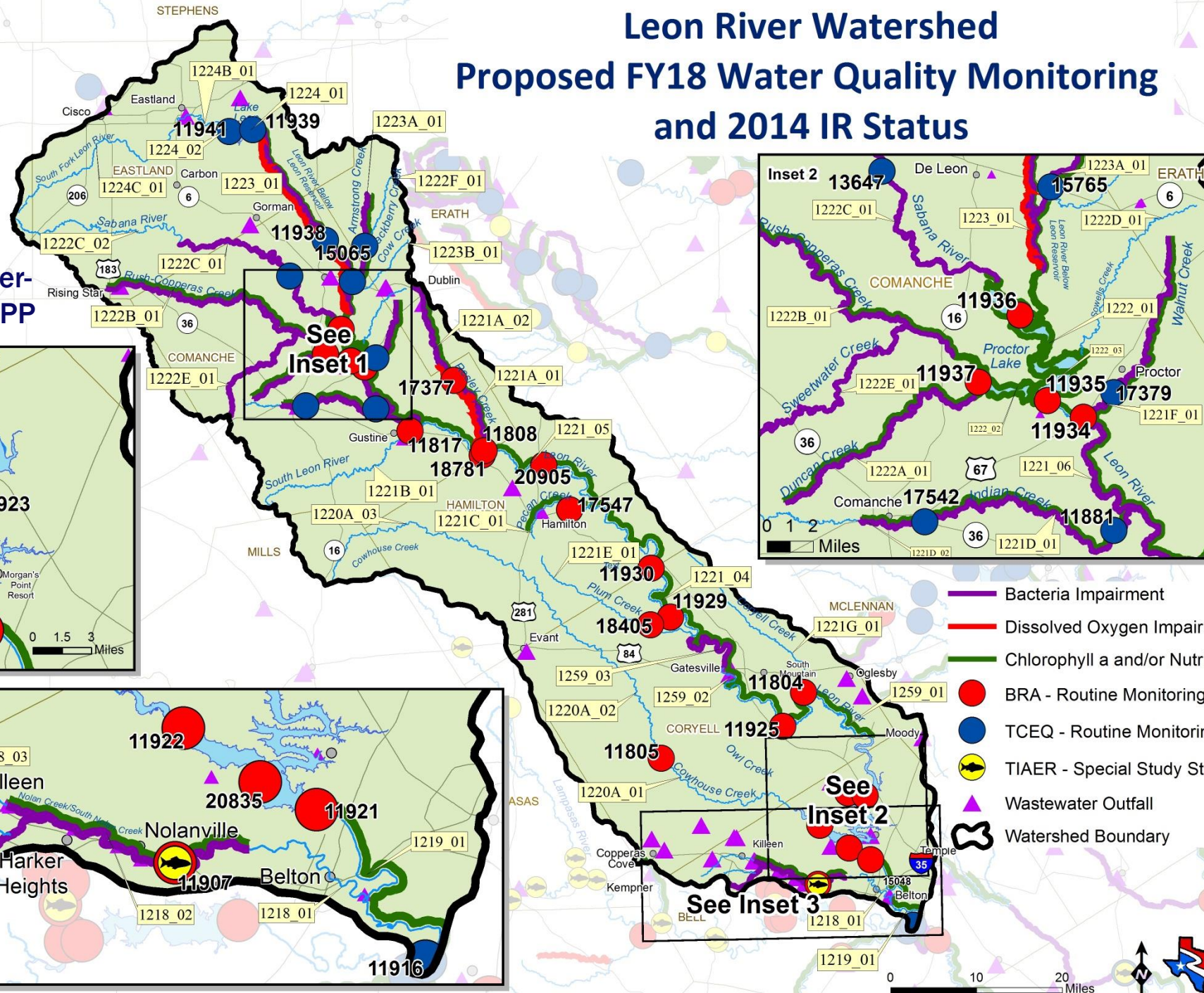
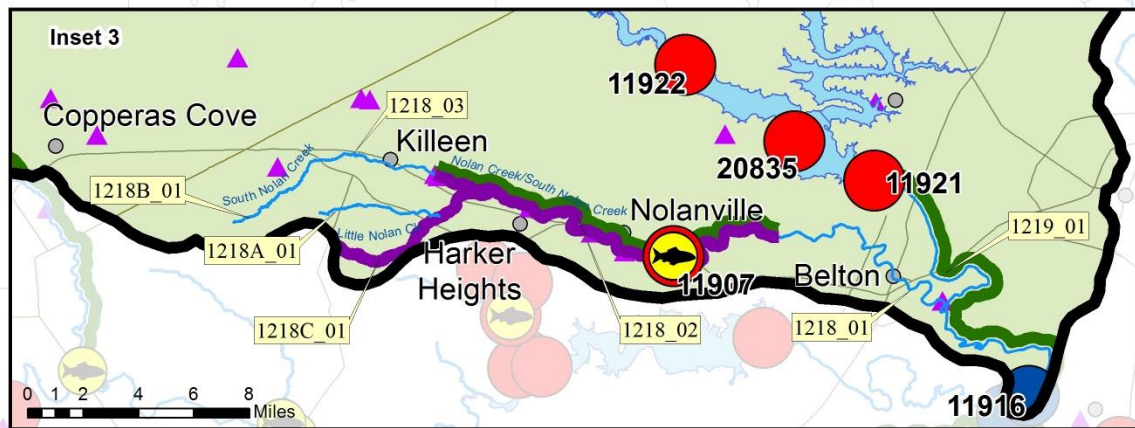
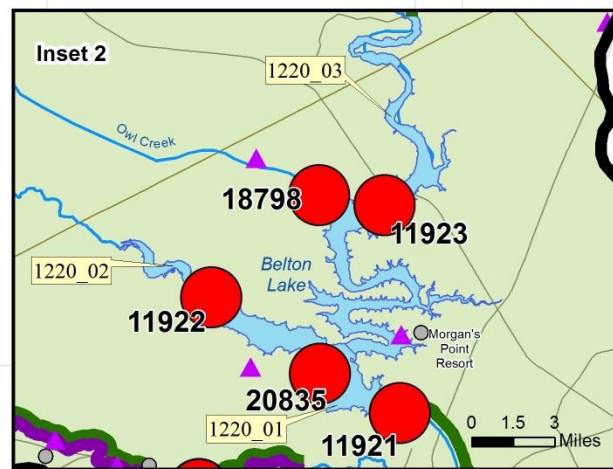
- Bacteria Impairment
- Dissolved Oxygen Impairment
- Chlorophyll a and/or Nutrient Concern
- BRA - Special Study Station
- BRA - Routine Monitoring Station
- TCEQ - Monitoring Station
- TIAER - Monitoring Station
- Wastewater Outfall
- Watershed Boundary





- 12 (15 AUs) Bacteria
2 DO
22 Nutrient/Chl a
- 1221 - Leon River WPP
- Priority Designation
by USDA
- 1218 - Nolan Creek Water-
shed Partnership and WPP

Leon River Watershed Proposed FY18 Water Quality Monitoring and 2014 IR Status

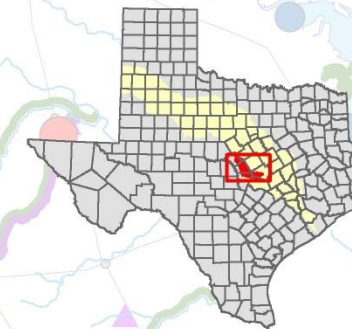


- Bacteria Impairment
- Dissolved Oxygen Impairment
- Chlorophyll a and/or Nutrient Concern
- BRA - Routine Monitoring Station
- TCEQ - Routine Monitoring Station
- TIAER - Special Study Station
- ▲ Wastewater Outfall
- ⬮ Watershed Boundary



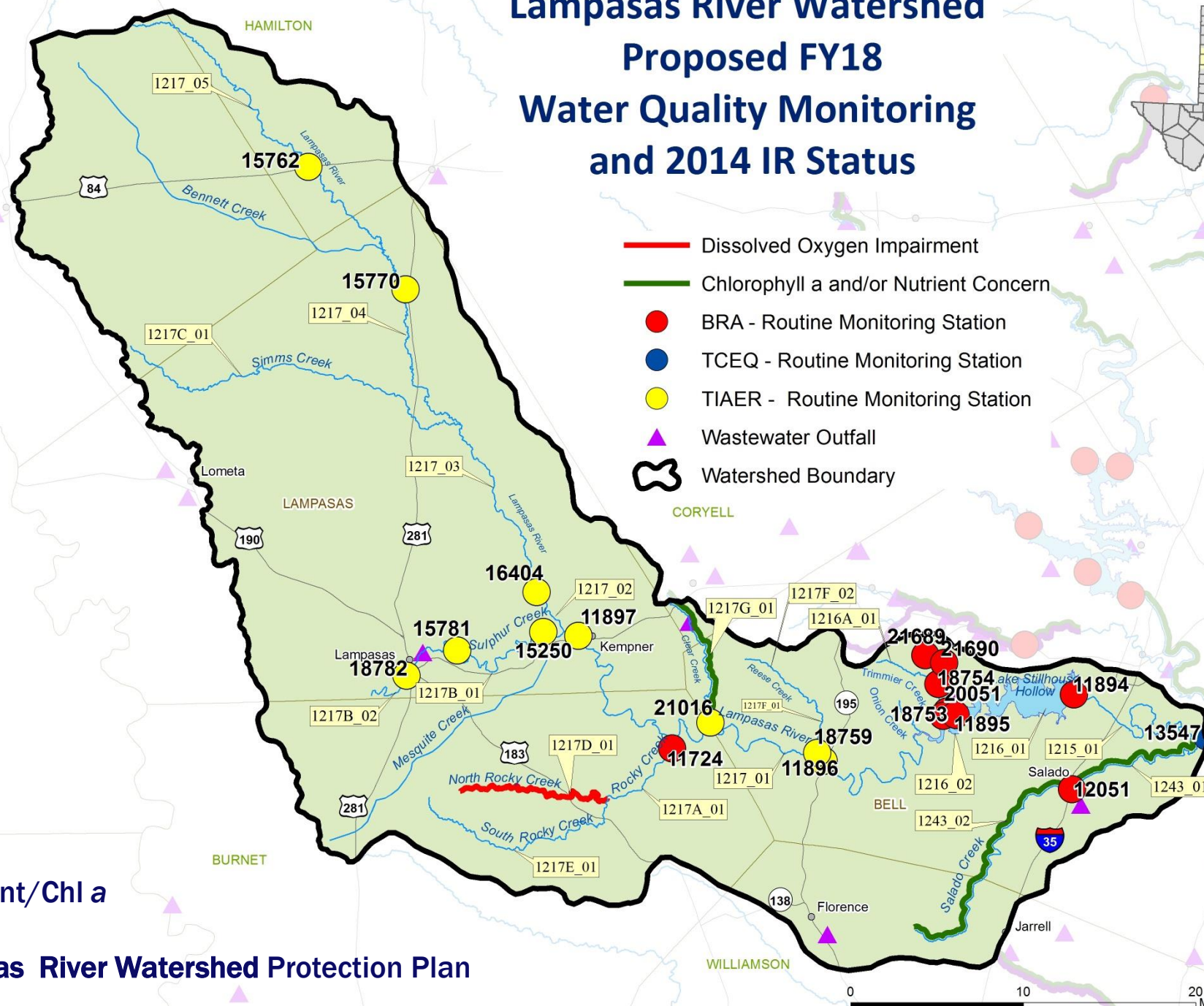


Lamparas River Watershed Proposed FY18 Water Quality Monitoring and 2014 IR Status

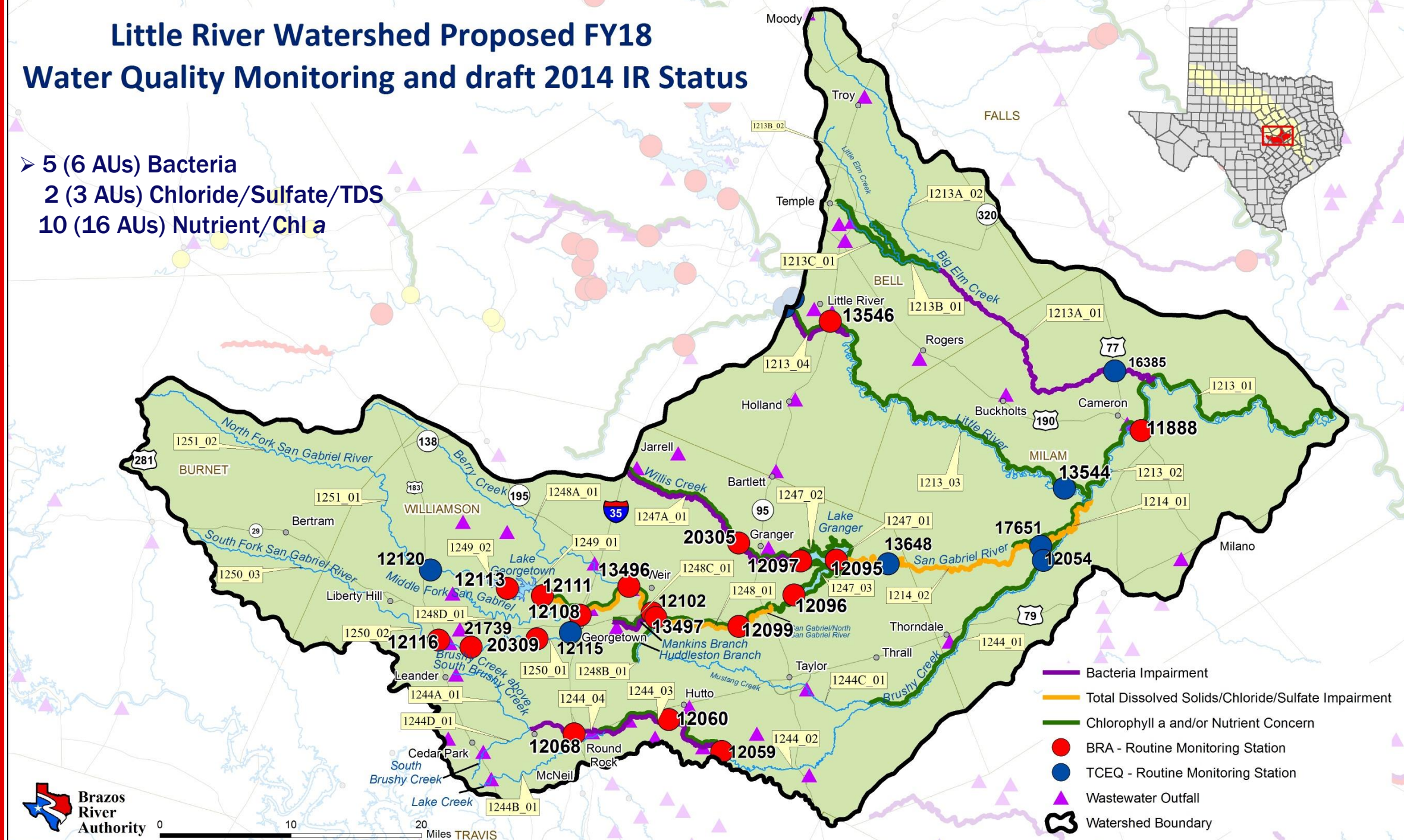


- Dissolved Oxygen Impairment
- Chlorophyll a and/or Nutrient Concern
- BRA - Routine Monitoring Station
- TCEQ - Routine Monitoring Station
- TIAER - Routine Monitoring Station
- ▲ Wastewater Outfall
- ⬮ Watershed Boundary

- 1 DO
- 2 (3 AUs) Nutrient/Chl a
- 1217 - Lamparas River Watershed Protection Plan



- 5 (6 AUs) Bacteria
- 2 (3 AUs) Chloride/Sulfate/TDS
- 10 (16 AUs) Nutrient/Chl *a*

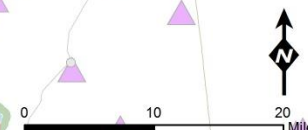
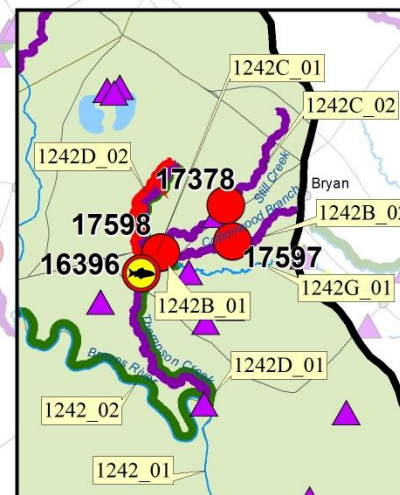




Central Watershed of the Brazos River Proposed FY18 Water Quality Monitoring and 2014 IR Status

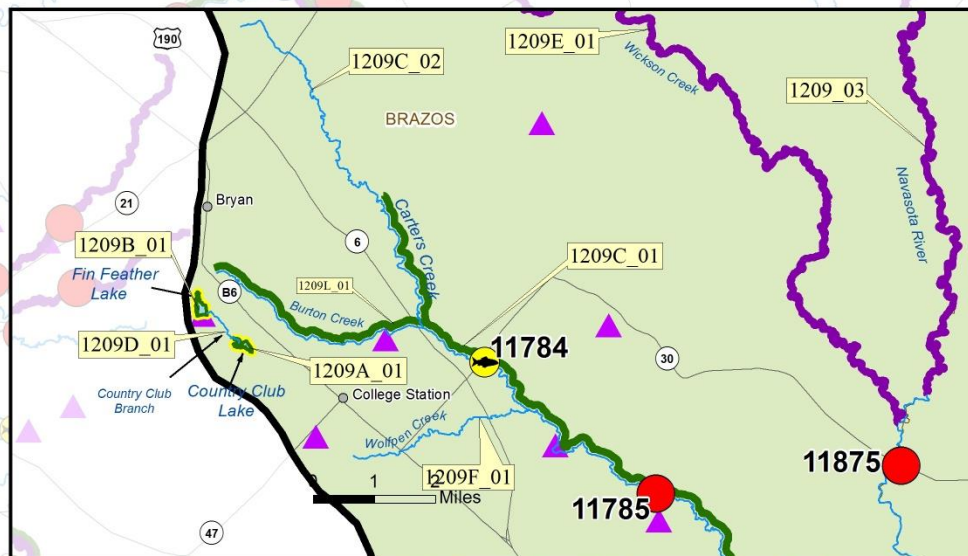
- 11 (14 AUs) Bacteria
1 DO
8 (12 AUs) Nutrient/Chl a
- 11 recommendations from completed RUAAs
- Potential 2 waterbodies removed from 303d list
- TIAER visual periphyton assessment

- Dissolved Oxygen Impairment
- Bacteria Impairment
- Chlorophyll a and/or Nutrient Concern
- BRA - Routine Monitoring Station
- TCEQ - Routine Monitoring Station
- TIAER - Special Study Station
- ▲ Wastewater Outfall

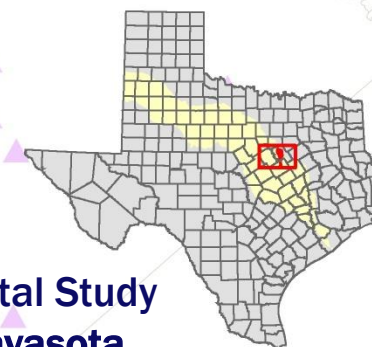




- 7 (9 AUs) Bacteria
- 1 (2 AUs) DO
- 9 (13 AUs) Nutrient/Chl a
- 7 recommendations from completed RUAAs
- Potential 6 waterbodies removed from 303d list
- Carter's and Burton Creek TMDL Implementation
- Navasota River WPP
- TIAER visual periphyton assessment



Navasota River Watershed Proposed FY18 Water Quality Monitoring and 2014 IR Status

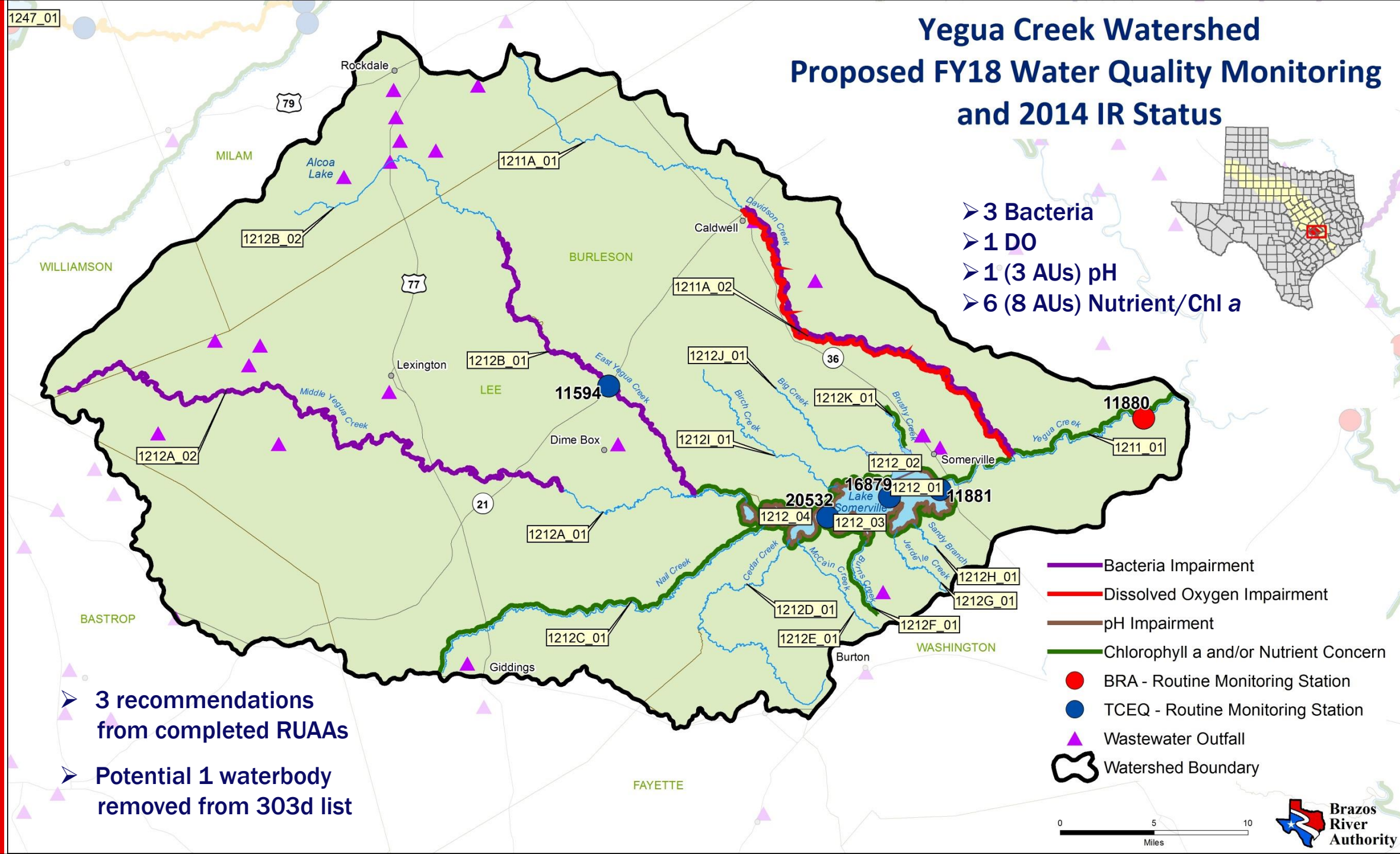


- WMP Environmental Study station: **18341 Navasota River at OSR NE of Bryan**

- Bacteria Impairment
- Dissolved Oxygen Impairment
- Toxicity in Sediment Impairment
- Chlorophyll a and/or Nutrient Concern
- BRA - Routine Monitoring Station
- TCEQ - Routine Monitoring Station
- BRA - Special Study Station
- TIAER - Special Study Station
- ▲ Wastewater Outfall
- ⬮ Watershed Boundary

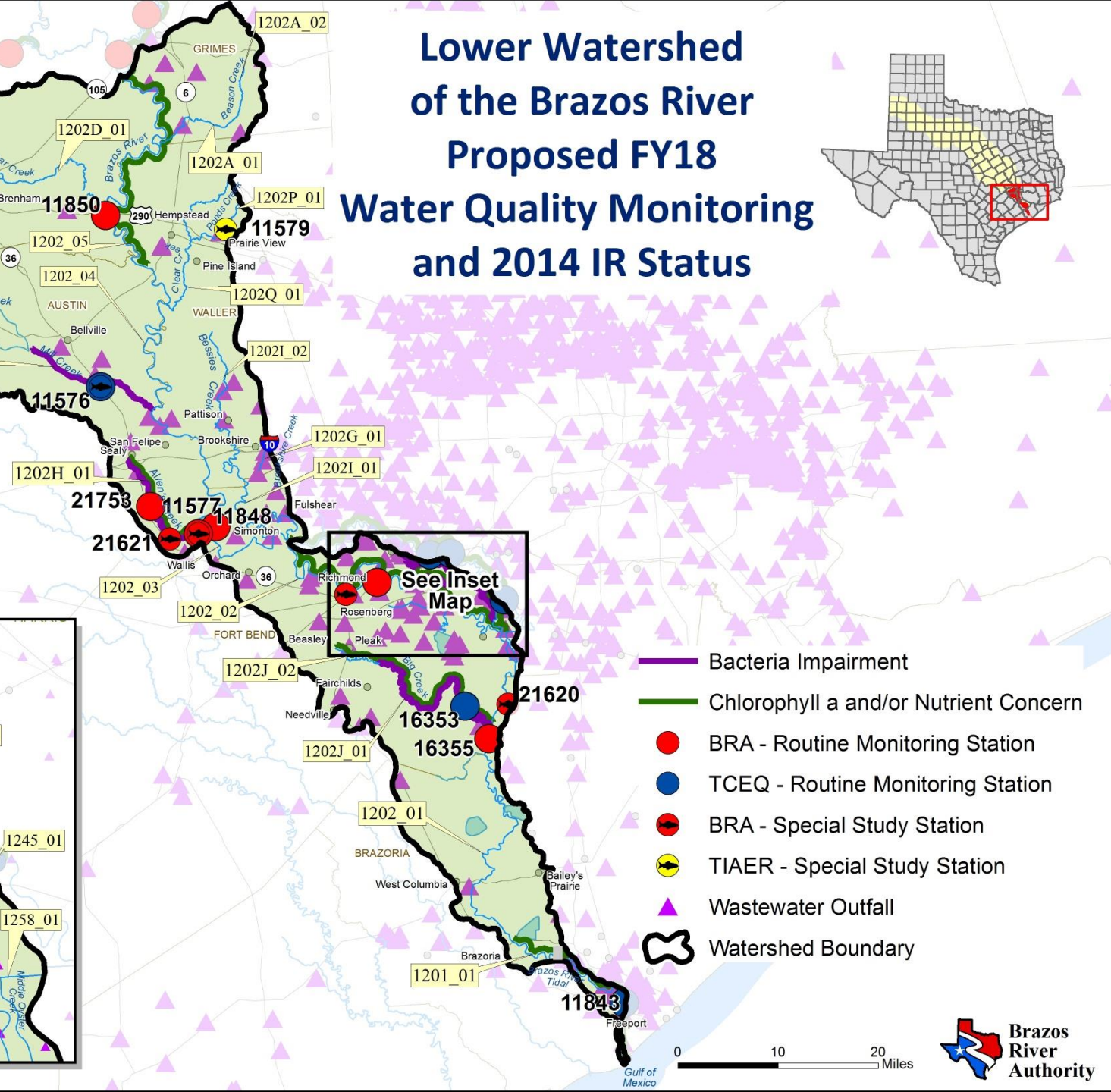
0 10 20 Miles

- 3 Bacteria
- 1 DO
- 1 (3 AUs) pH
- 6 (8 AUs) Nutrient/Chl a

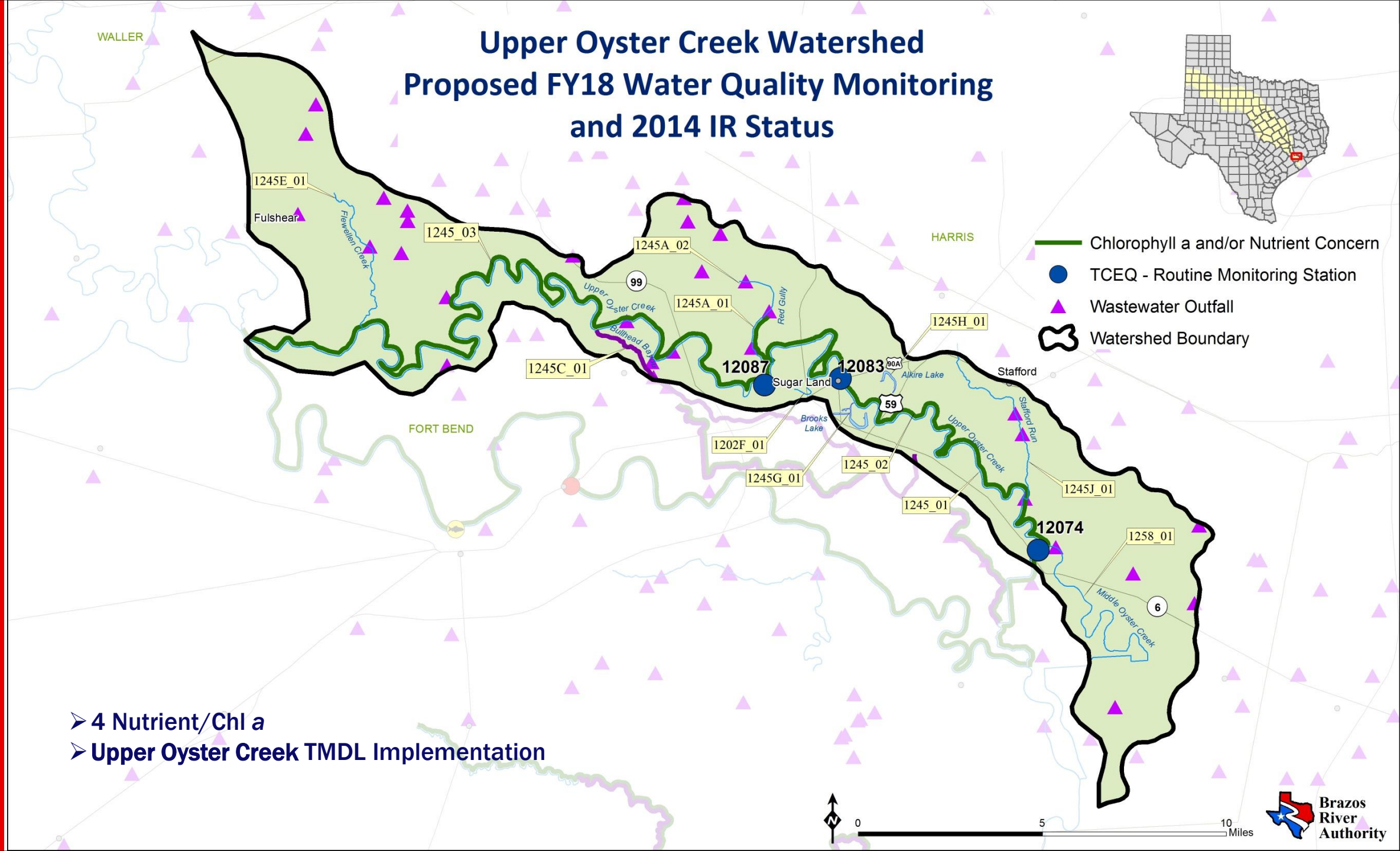
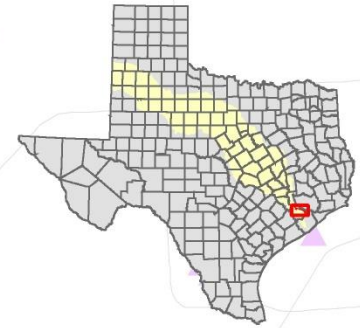


- **3 recommendations from completed RUAs**
- **Potential 1 waterbody removed from 303d list**

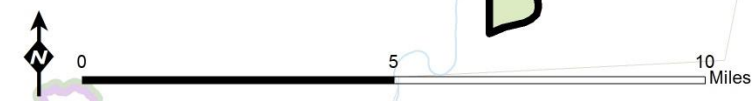
-
- The map displays the Brazos River watershed in Texas, highlighting the river and its tributaries. Key locations include Pecan Grove, Richmond, Rosenberg, Pleak, and Thompsons. Major highways shown are 99, 6, 41, 90A, and 59. The river is segmented with labels such as 11846, 11847, 1245F_01, 1245C_01, 1245B_01, 1245D_01, 1245I_01, 1245_01, 1258_01, 1202_01, 1202B_01, 1202_02, and 1245_01. The Fort Bend area is also indicated. A scale bar at the bottom left shows a distance of 0 to 5 miles.



Upper Oyster Creek Watershed Proposed FY18 Water Quality Monitoring and 2014 IR Status



- 4 Nutrient/Chl a
- Upper Oyster Creek TMDL Implementation





Brazos River Authority



Brazos
River
Authority