

# Navasota River Watershed Based Planning Update



**LUCAS GREGORY**  
**TEXAS WATER RESOURCES INSTITUTE**

**BRAZOS RIVER BASIN CRP STEERING  
COMMITTEE MEETING**

**APRIL 14, 2016**



# Navasota River Impairments



- *E. coli* impairments in watershed since 2002
- 9 individual bacteria impairments
  - 2 on main stem of Navasota
  - 7 on tributaries
- 3 TMDLs for bacteria established
  - Carters and Burton Creeks; Country Club Branch

# Navasota Approach



- TWRI proposed a WPP through TSSWCB in early 2014
- TCEQ approached TWRI about doing a basin-scale approach to address bacteria impairments in mid-2014
  - Either TMDLs, WPP or both
- Developing WPP through TSSWCB project and working to determine TCEQ path forward

# Background Assessment



- Gathered background information for basin
- Generated historic load duration curves
- Created initial watershed bacteria source inventory

## Basin Approach to Address Bacterial Impairments in the Navasota River Watershed

Texas Water Resources Institute TR-476  
May 2015



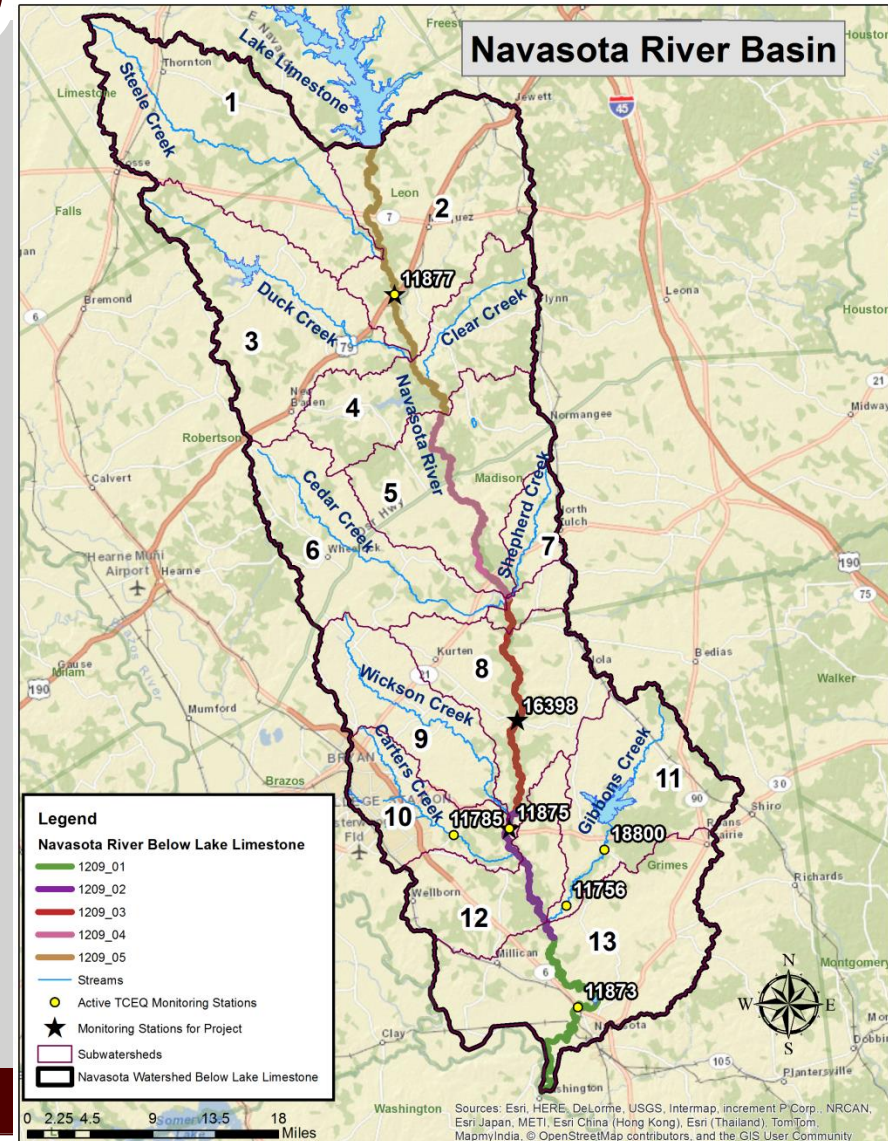
  
Texas Water  
Resources Institute  
*make every drop count*

Lucas Gregory, Anna Gitter, Katelyn Lazar  
Texas Water Resources Institute  
Texas A&M AgriLife Research

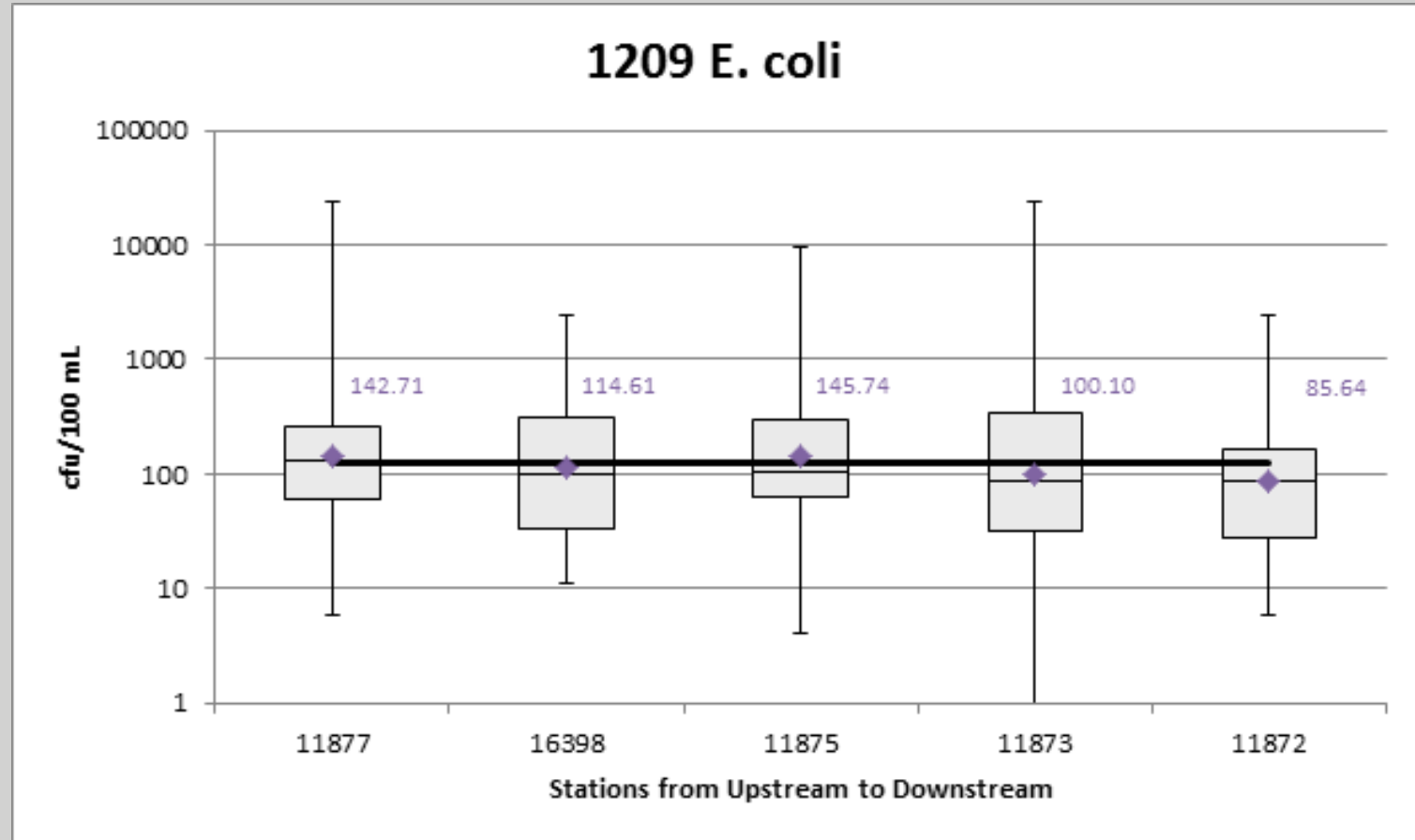
# Monitoring Support



- TWRI conducting bi-monthly monitoring at 3 sites
  - US 79, Long Trussel Rd, SH 30
  - *E. coli* and stream flow are primary parameters
- Bacteria Source Tracking
  - Source ID at SH 30



# Recent *E. coli* Concentrations



# General Education and Outreach



- Work to raise awareness about general water quality
- Discuss Navasota River water quality issues
- Delivered focused programs regarding water quality
  - Texas Watershed Steward
  - Texas Well Owner Network
- Discussed project at existing meetings
  - Soil and Water Conservation Districts
  - AgriLife Extension Programs
  - Commissioners Court Meetings

# Current Project Status



- WPP development in initial stages
- Working with stakeholders to refine input information
  - Specific problems
  - Source contributions
  - Define needs to address bacteria issues
- Updating background information in plan
- Beginning to draft management measure language based on stakeholder feedback



# Next Steps



- Complete bacteria source tracking analysis
- Refine load duration curves
- Develop draft management prioritization recommendations
- Continue seeking information from stakeholders regarding resource needs to address issues
- Host next stakeholder meetings
  - Likely early June

# Questions



**LUCAS GREGORY**  
**TEXAS WATER**  
**RESOURCES**  
**INSTITUTE**

**LFGREGORY@AG.TAMU.EDU**  
**979-845-7869**

Project funding is provided in part through a State Nonpoint Source Grant Program funding from the Texas State Soil and Water Conservation Board and through Total Maximum Daily Load Program funding from the Texas Commission on Environmental Quality.