



# NOLAN CREEK

## Nolan Creek/South Nolan Creek Watershed Protection Plan

Texas Institute for Applied Environmental Research  
Stephenville, Texas

April 14, 2016



# **Nolan Creek/South Nolan Creek Watershed Protection Plan (WPP)**

**Start Date: Mar 2016**

**End Date: Nov 2018**

**Project Goal:** Develop a WPP that addresses the bacteria impairment and other water quality concerns within Nolan Creek/South Nolan Creek

# Segment 1218

---

**Impaired due to elevated bacteria**

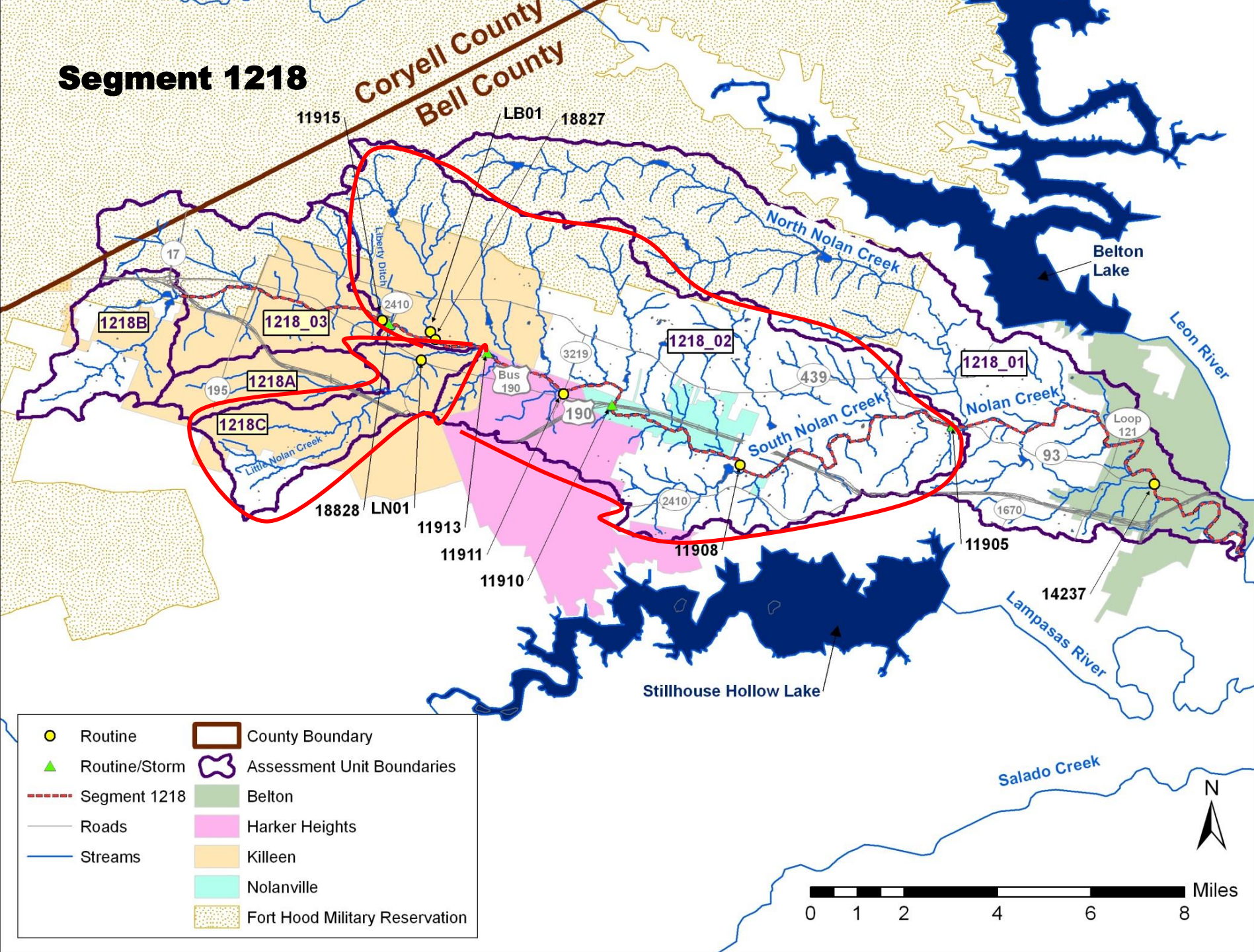
- **1218\_02 – South Nolan from Liberty Ditch to confluence with North Nolan/Nolan Creek**
- **1218C\_01 – Little Nolan Creek**

**Concerns for elevated nutrients in 1218\_02**

---

# Segment 1218

Coryell County  
Bell County

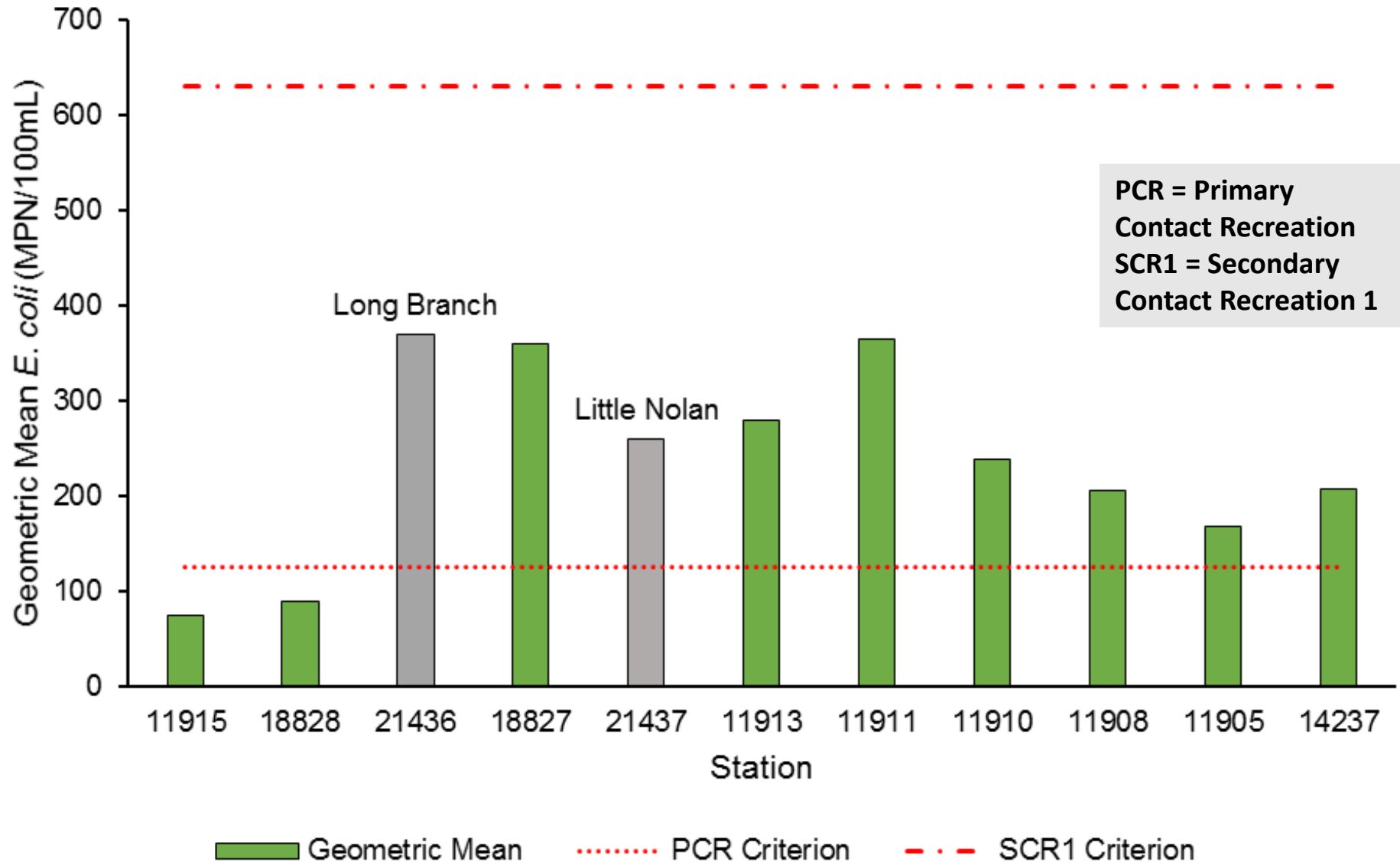


- |               |                                |
|---------------|--------------------------------|
| Routine       | County Boundary                |
| Routine/Storm | Assessment Unit Boundaries     |
| Segment 1218  | Belton                         |
| Roads         | Harker Heights                 |
| Streams       | Killeen                        |
|               | Nolanville                     |
|               | Fort Hood Military Reservation |

0 1 2 4 6 8 Miles



# Monthly Samples May 2013 – June 2015 (n = 26)



# **Project Monitoring**

## **Monitoring to Facilitate WPP Development**

- **Routine monthly monitoring at 10 stations (locations to be determined)**
  - **Bacteria**
  - **Flow**
  - **Nutrients**
  - **Conventional Field (DO, water temp., pH & specific conductance)**
- **Provide feedback on current conditions**
- **Further aid in identifying sources spatially**
- **Track trends in water quality**

# **Sources of Bacteria**

- **Point Sources**
  - **Sanitary Sewer Overflows (SSOs)**
- **Nonpoint Sources**
  - **On-Site Treatment Systems or Septic Systems**
  - **Stormwater Runoff from Urban & Rural Areas**
    - **Pets**
    - **Residential & Industrial Waste**
    - **Livestock**
    - **Birds & Wildlife**

# Project Timeline

- **Development of WPP Committee (Feb-Apr 2016)**
- **1<sup>st</sup> WPP Committee Meeting (May 4, 1 pm in Harker Heights) – at least quarterly thereafter**
- **Monitoring Plan & QAPP (Jun 2016)**
- **DRAFT WPP (Nov 2017)**
- **FINAL Approved WPP (Aug 2018)**

# WPP Development Committee

**Still looking for volunteers, nominations & recommendations**

Leah Taylor

Email: [ltaylor@tiaer.tarleton.edu](mailto:ltaylor@tiaer.tarleton.edu)

Phone: (254) 968-0513

# Questions?

Project Website:

<http://www.killeentexas.gov/nolancreekwatershed>

or

<http://tiaer.tarleton.edu/nolan-creek-watershed.html>

PREPARED IN COOPERATION WITH THE TEXAS COMMISSION OF ENVIRONMENTAL QUALITY  
AND U.S. ENVIRONMENTAL PROTECTION AGENCY

Leah Taylor

Texas Institute for Applied Environmental Research

[ltaylor@tiaer.tarleton.edu](mailto:ltaylor@tiaer.tarleton.edu)

254.968.0513