



***Updated Water Bodies Not  
Meeting State Criteria  
and  
FY2017 Proposed Monitoring***

***Presented by  
Jenna Olson  
Water Quality Programs***



## **Impairments - Basin Overview**

**In the 2014 IR:**

**Out of a total of 336 waterbody assessment units (AUs) evaluated...**

- **105 waterbody AUs are listed as impaired on the draft 2014 303(d) List (≈31%)**
- **78 waterbody AUs are listed as impaired for elevated bacteria (≈23%)**
- **9 waterbody AUs are listed for dissolved oxygen Impairment (≈ 3%)**
- **12 waterbody AUs are listed as impaired for chloride, sulfate and/or TDS (≈ 4%)**
- **193 waterbody AUs are identified as having concerns based on screening levels for algal growth and/or elevated nutrients (≈ 57%)**
- **4 waterbody AUs were added to the impaired list and 14 waterbody AUs were de-listed**

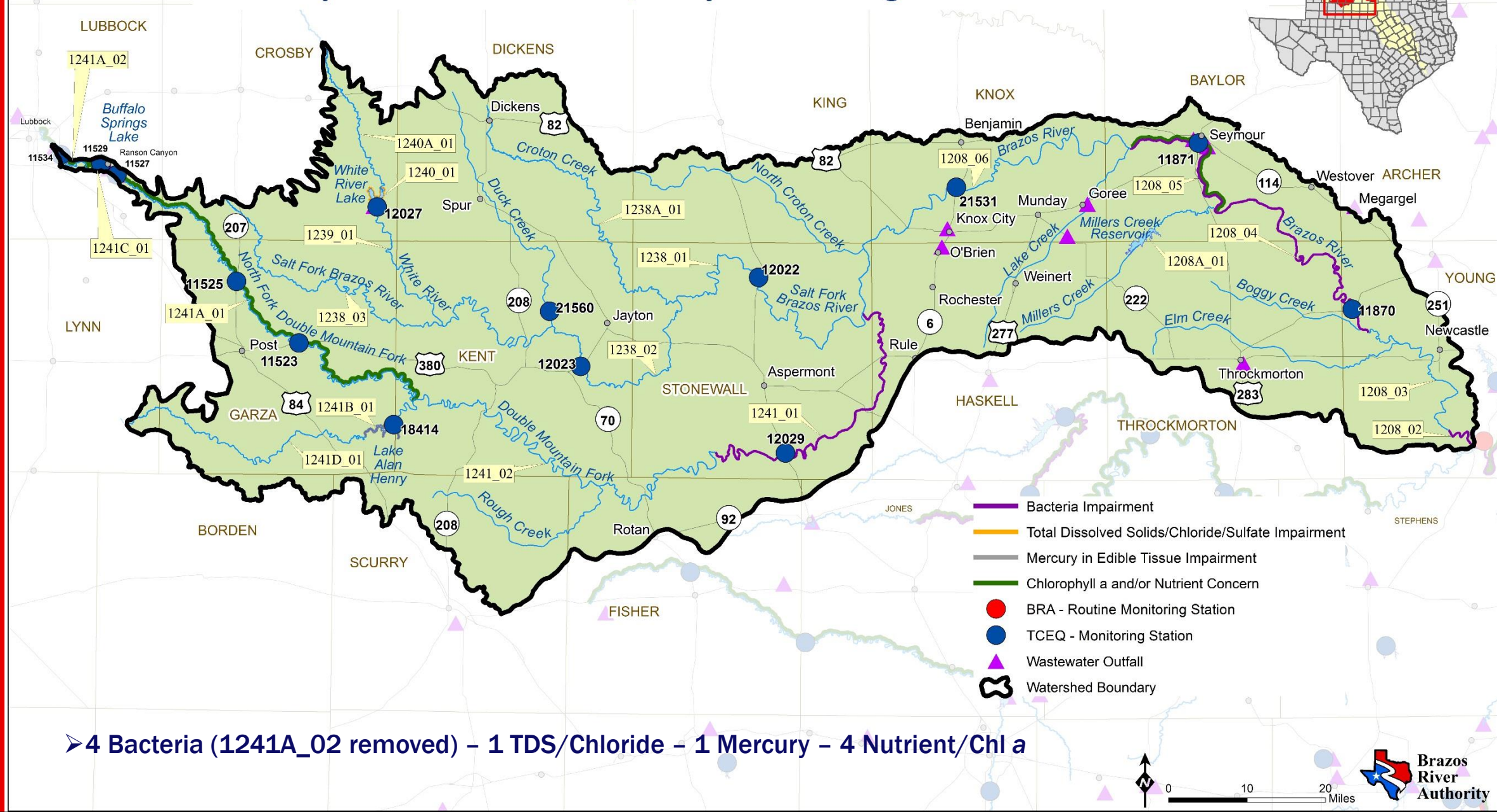


## **General Monitoring Strategy for FY 2017**

- **Maintain current routine monitoring effort throughout the Basin.**
  - **There is potential to add additional stations if they can be incorporated into our current run schedule**
- **BRA will continue instream flow based biological monitoring in support of the BRA's Water Management Plan Environmental Studies**
- **BRA will complete collection of 24-hour DO data as well as an Aquatic Life Assessment in the Navasota River Watershed.**



# Watershed of the Salt and Double Mountain Forks of the Brazos River Proposed FY17 Water Quality Monitoring and 2014 IR Status



➤ 4 Bacteria (1241A\_02 removed) – 1 TDS/Chloride – 1 Mercury – 4 Nutrient/Chl a

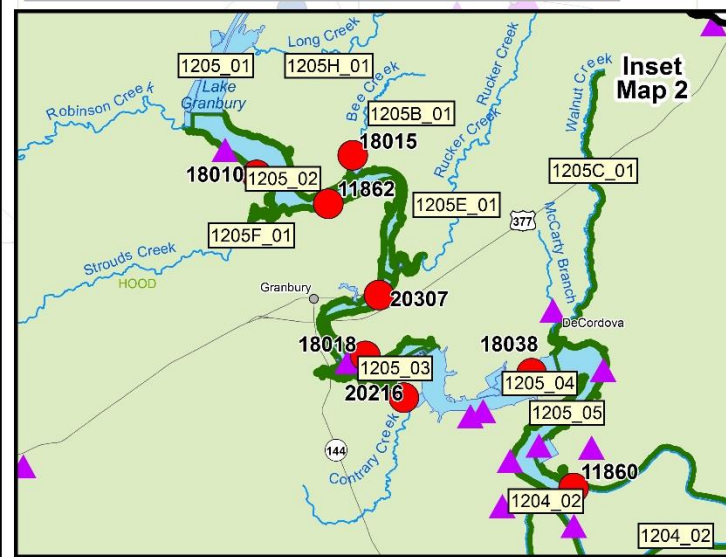


**Bacteria Impairment** (purple line)  
**Chlorophyll a and b** (green line)  
**TCEQ - Monitoring Stations** (blue dots)



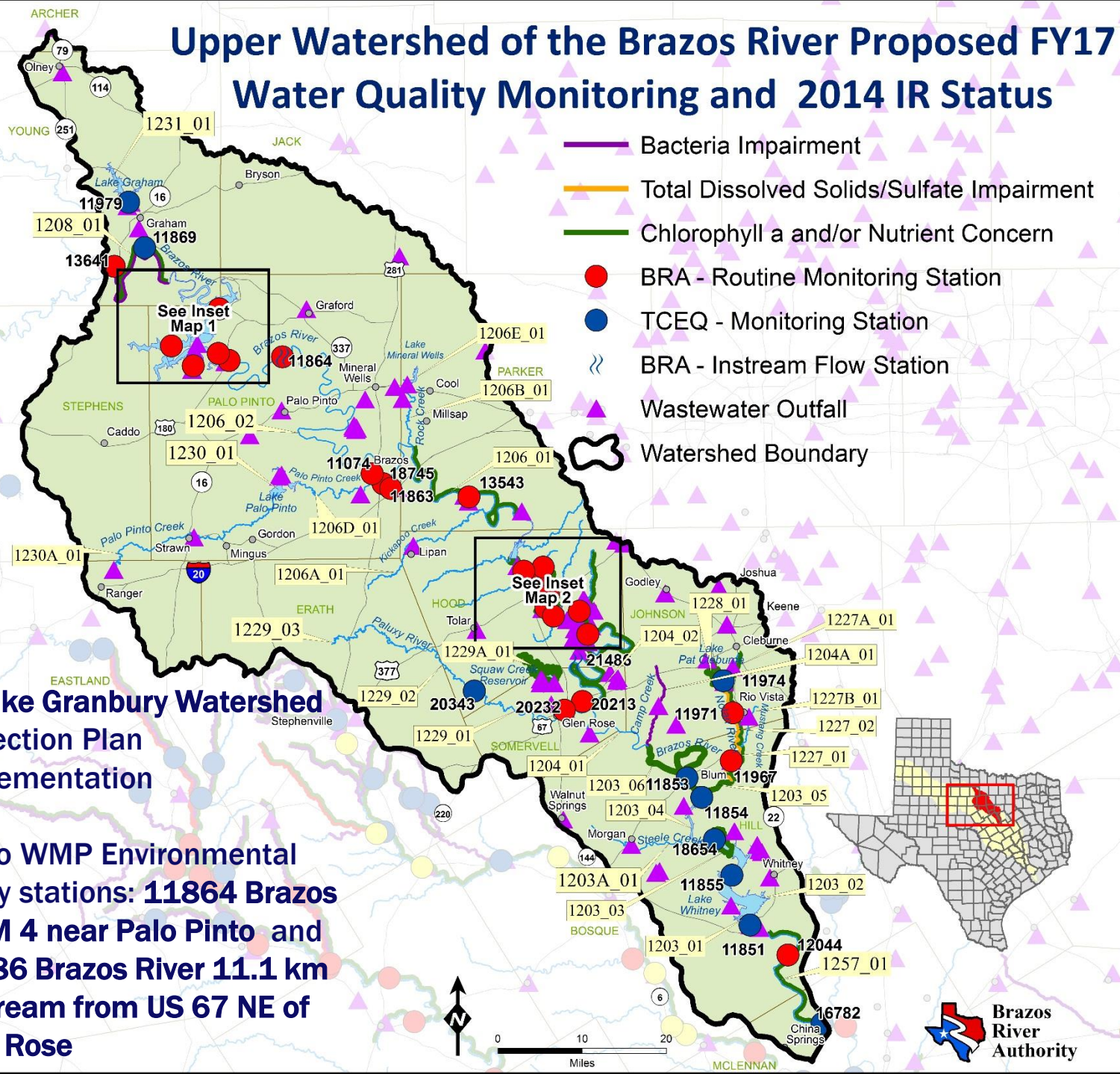


➤ **2 Bacteria**  
**1 TDS/Sulfate**  
**16 Nutrient/Chl a**



## ➤ Lake Granbury Watershed Protection Plan Implementation

➤Two WMP Environmental Study stations: **11864 Brazos at FM 4 near Palo Pinto** and **21486 Brazos River 11.1 km upstream from US 67 NE of Glen Rose**

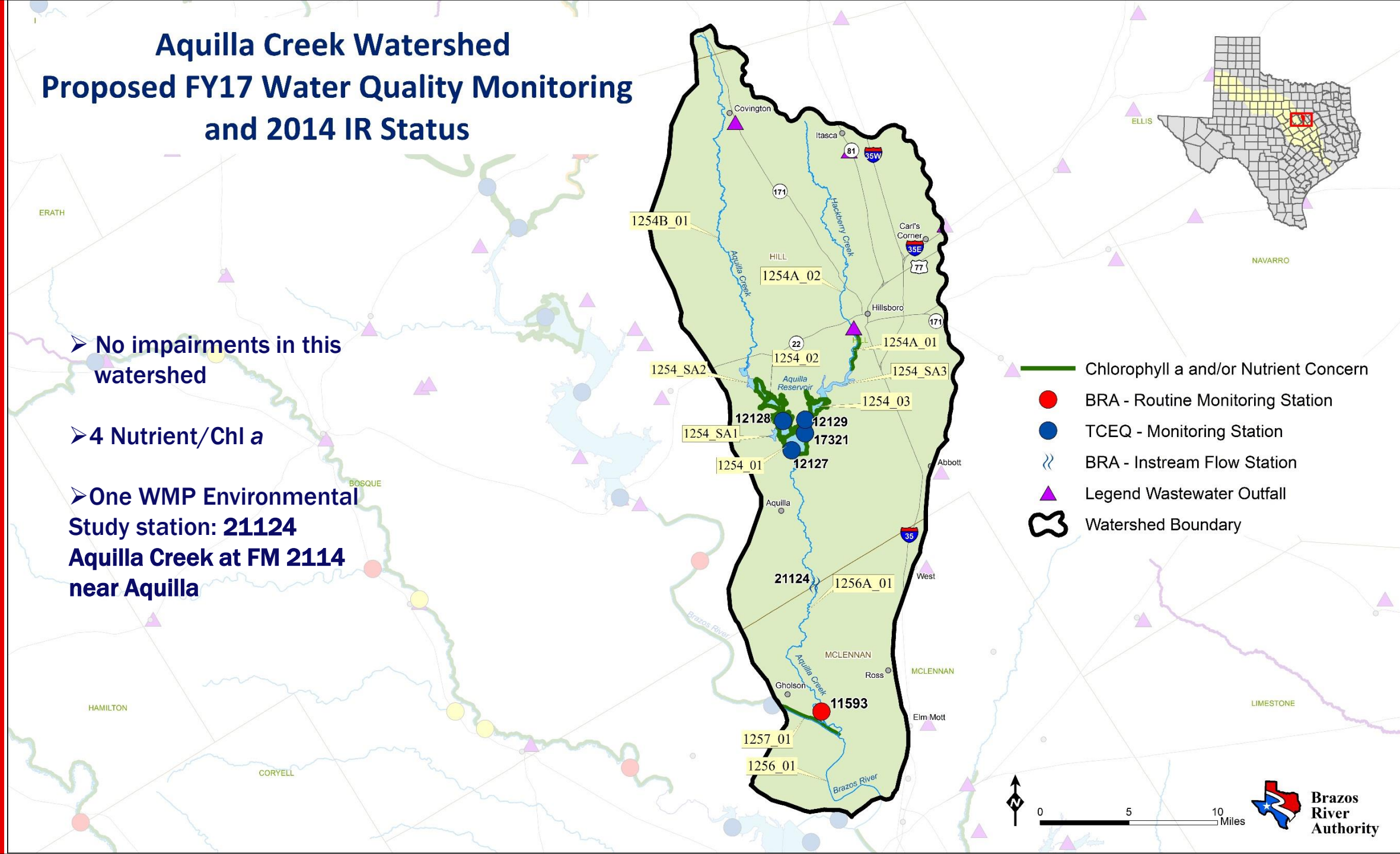






# Aquilla Creek Watershed Proposed FY17 Water Quality Monitoring and 2014 IR Status

- No impairments in this watershed
- 4 Nutrient/Chl a
- One WMP Environmental Study station: **21124**  
**Aquilla Creek at FM 2114**  
**near Aquilla**



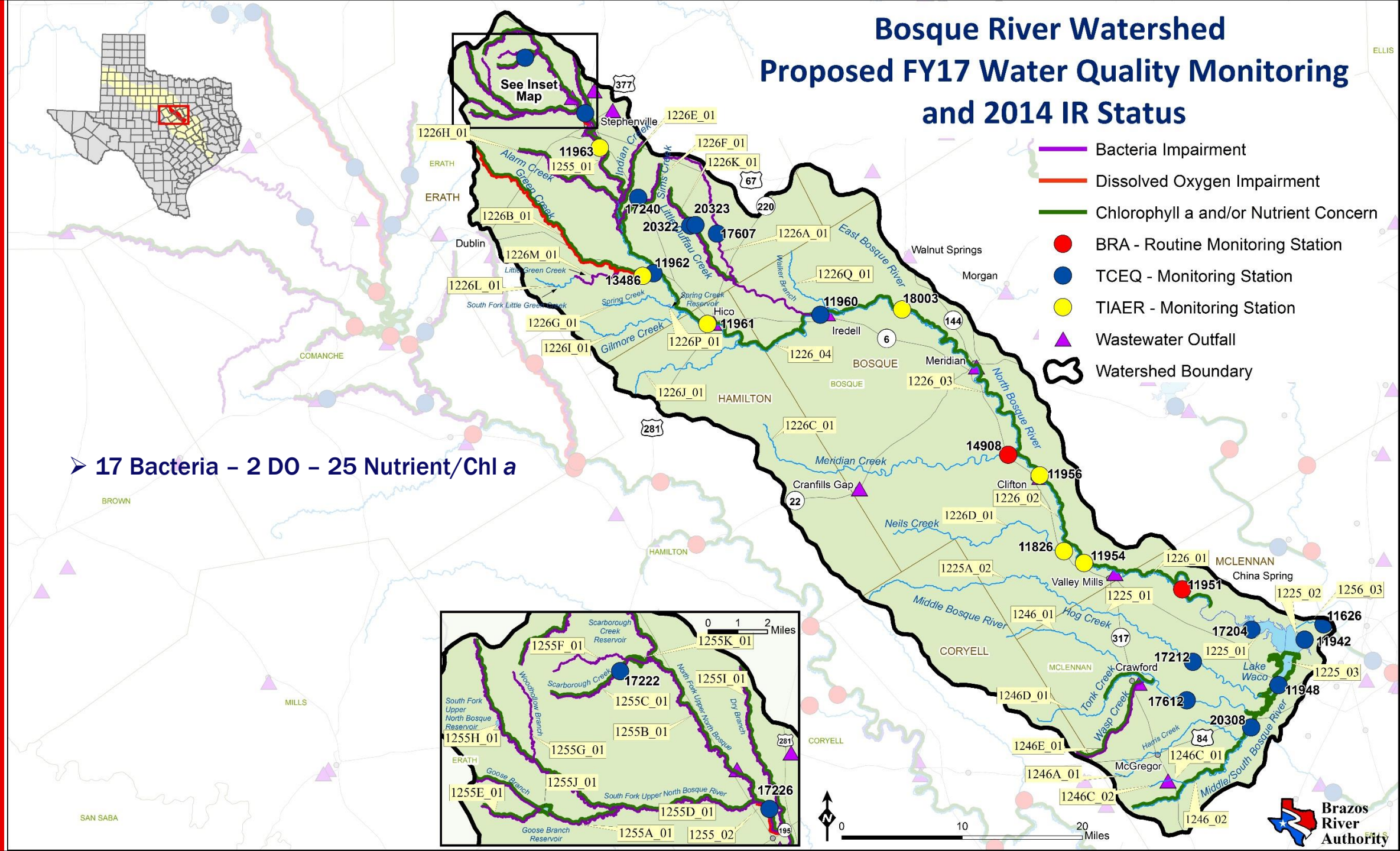




# Bosque River Watershed Proposed FY17 Water Quality Monitoring and 2014 IR Status

- Bacteria Impairment
- Dissolved Oxygen Impairment
- Chlorophyll a and/or Nutrient Concern
- BRA - Routine Monitoring Station
- TCEQ - Monitoring Station
- TIAER - Monitoring Station
- Wastewater Outfall
- Watershed Boundary

➤ 17 Bacteria - 2 DO - 25 Nutrient/Chl a





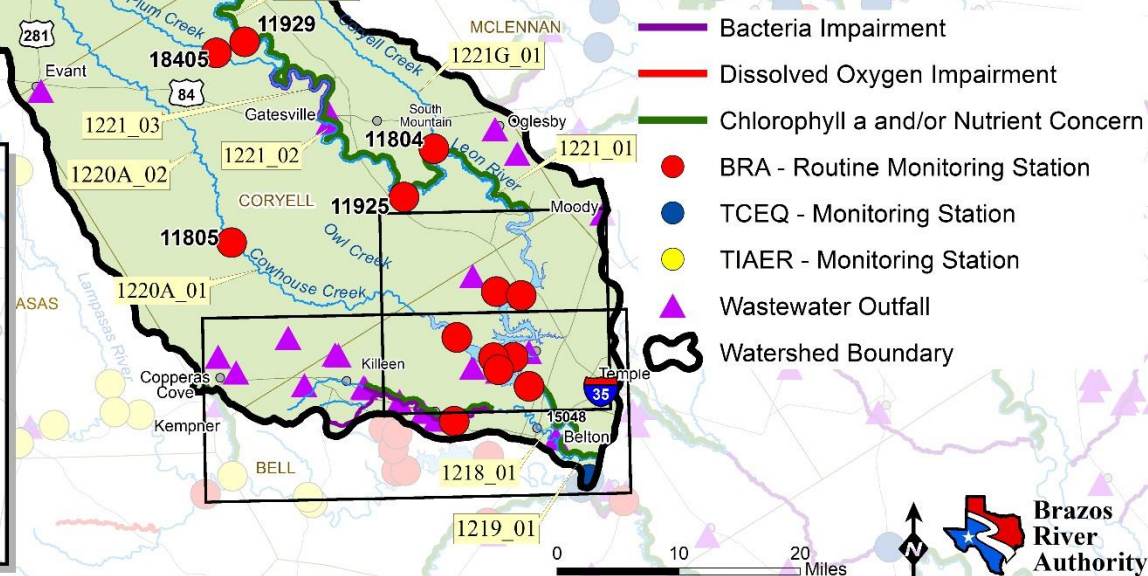
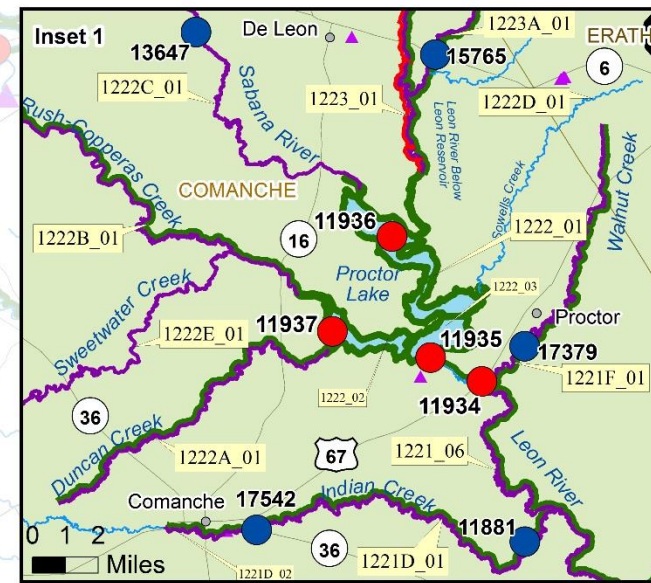
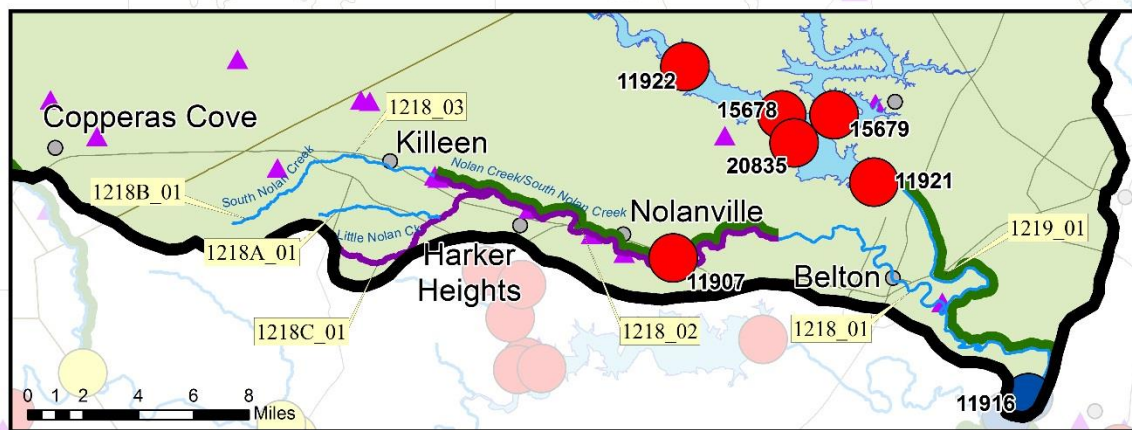
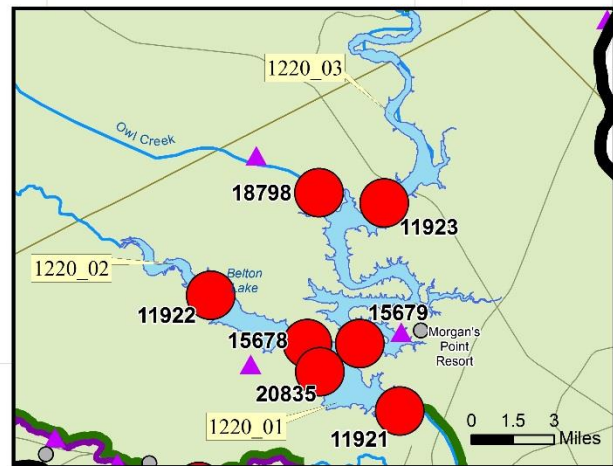


- 15 Bacteria
- 2 DO
- 22 Nutrient/Chl a

➤ **1221 - Leon River WPP**

➤ **1218 - Nolan Creek Watershed Partnership and WPP**

# Leon River Watershed Proposed FY17 Water Quality Monitoring and 2014 IR Status







# Lamparas River Watershed Proposed FY17 Water Quality Monitoring and 2014 IR Status



- Dissolved Oxygen Impairment
- Chlorophyll a and/or Nutrient Concern
- BRA - Routine Monitoring Station
- TCEQ - Monitoring Station
- TIAER - Monitoring Station
- ▲ Wastewater Outfall
- ⬮ Watershed Boundary

- (1216A\_01 removed) - 1 DO - 3 Nutrient/Chl a
- 1217 - Lamparas River Watershed Protection Plan

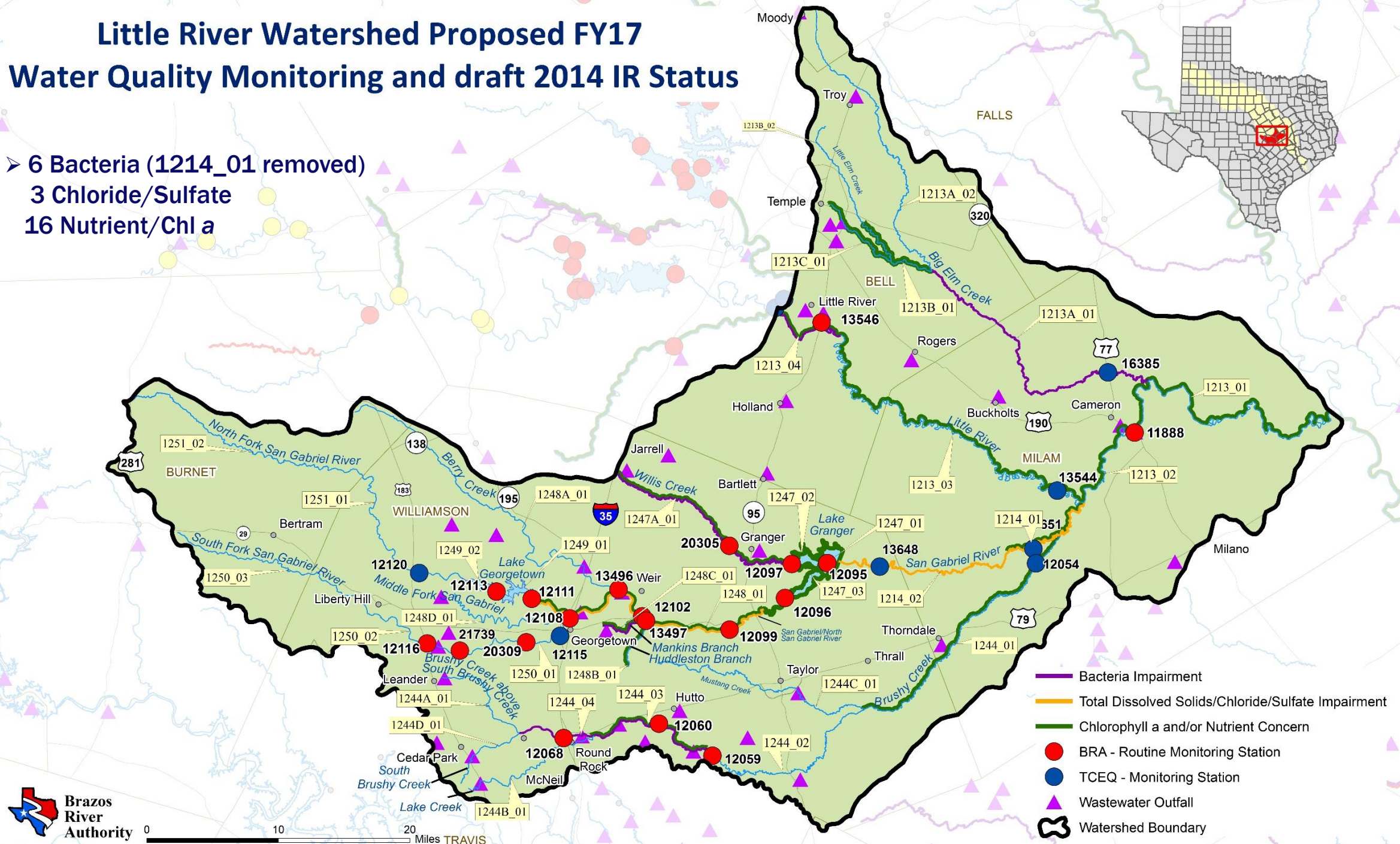






# Little River Watershed Proposed FY17 Water Quality Monitoring and draft 2014 IR Status

- 6 Bacteria (1214\_01 removed)
- 3 Chloride/Sulfate
- 16 Nutrient/Chl a



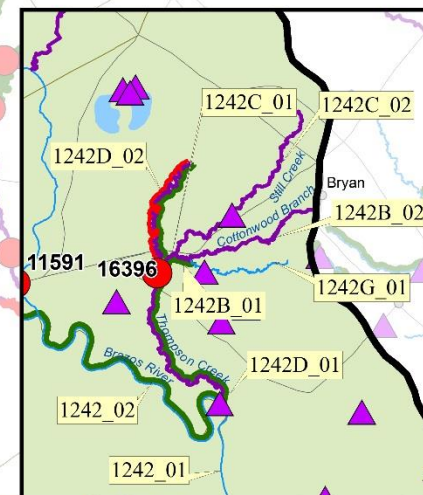




# Central Watershed of the Brazos River Proposed FY17 Water Quality Monitoring and 2014 IR Status

➤ 14 Bacteria  
1 DO  
12 Nutrient/Chl a

- Dissolved Oxygen Impairment
- Bacteria Impairment
- Chlorophyll a and/or Nutrient Concern
- BRA - Routine Monitoring Station
- TCEQ - Monitoring Station
- ▲ Wastewater Outfall
- ⬮ Watershed Boundary







- 8 Bacteria (1209C,D,G,L removed);  
1 DO  
9 Nutrient/Chl a

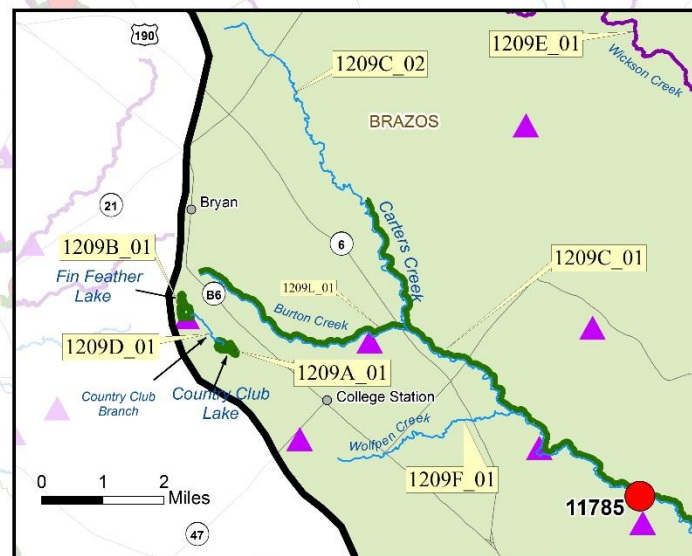
- Special project collecting 24-hour DO measurements in **Lake Mexia, Springfield Lake (Ft. Parker) and Duck Creek ALA**

- WMP Environmental Study station: **18341**  
Navasota River at OSR NE of Bryan

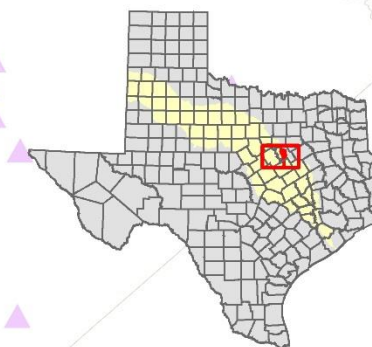
- **Carter's and Burton Creek TMDL**  
Implementation

- **Navasota River Watershed RUAAs**

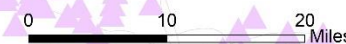
- **Navasota River WPP**



## Navasota River Watershed Proposed FY17 Water Quality Monitoring and 2014 IR Status



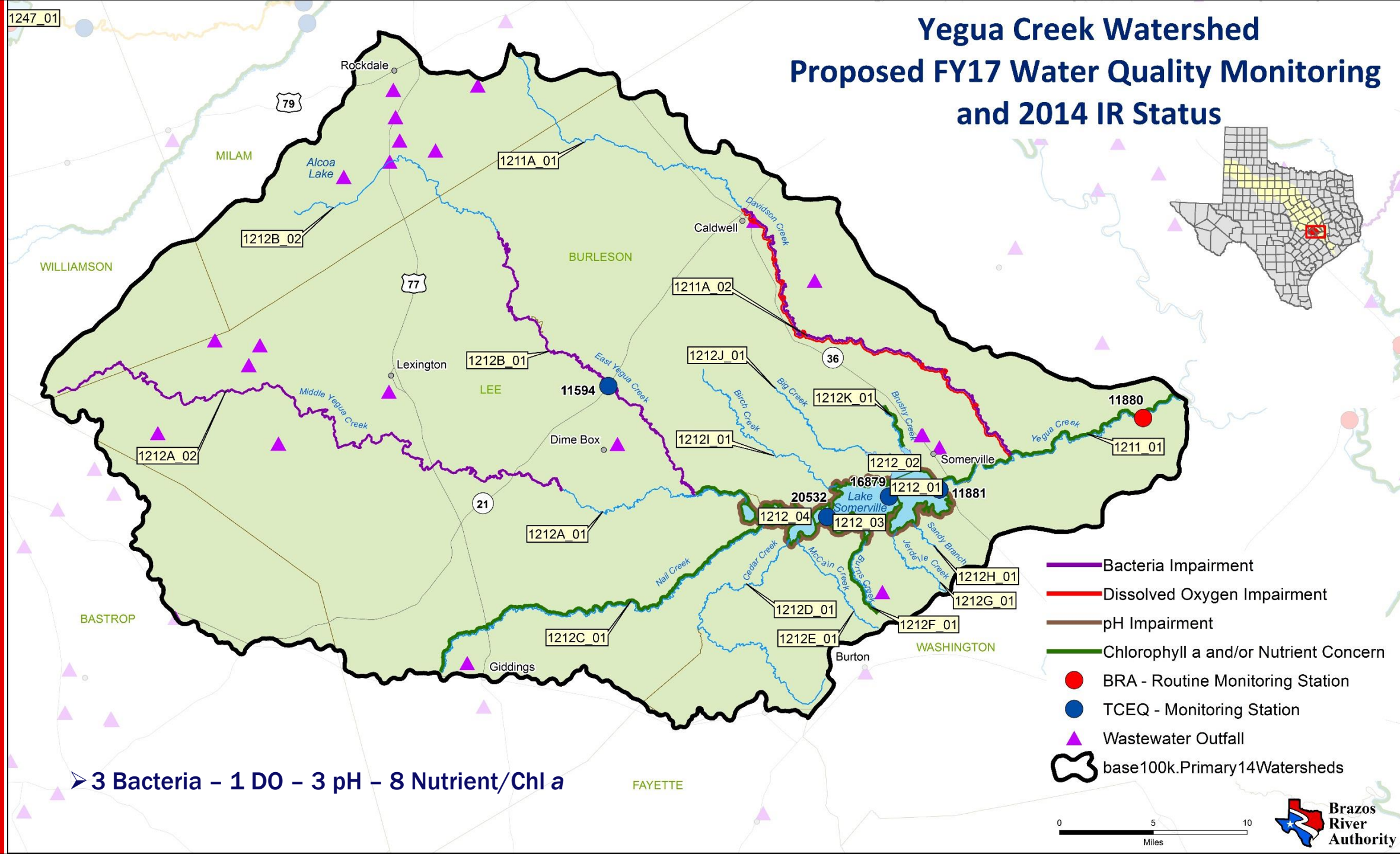
- Bacteria Impairment
- Dissolved Oxygen Impairment
- Toxicity in Sediment Impairment
- Chlorophyll a and/or Nutrient Concern
- BRA - Routine Monitoring Station
- TWRI - Monitoring Station
- TCEQ - Monitoring
- ≡≡ BRA - Instream Flow Station
- ⦿ BRA - 24-hour DO Monitoring Station
- ▲ Wastewater Outfall
- ⬮ Watershed Boundary







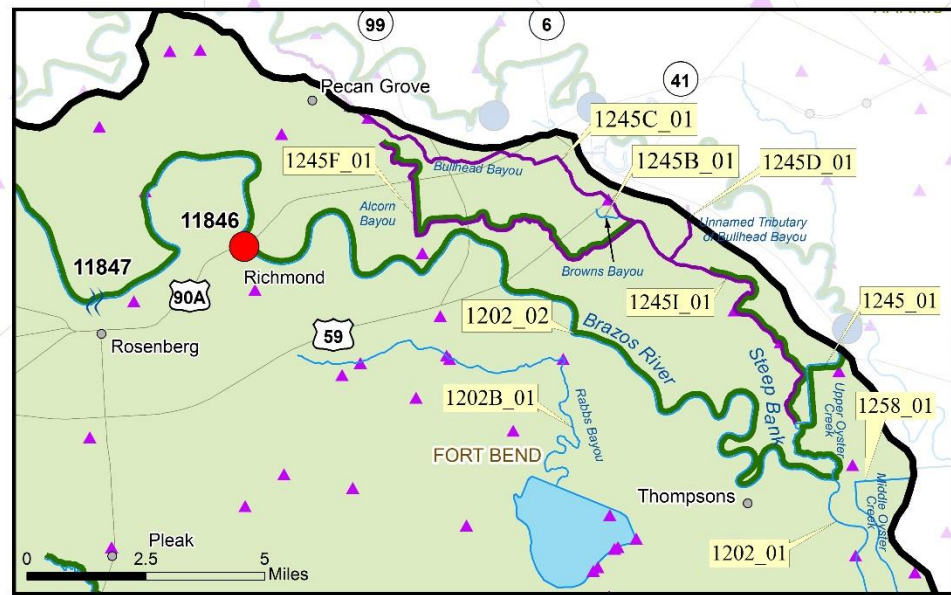
# Yegua Creek Watershed Proposed FY17 Water Quality Monitoring and 2014 IR Status



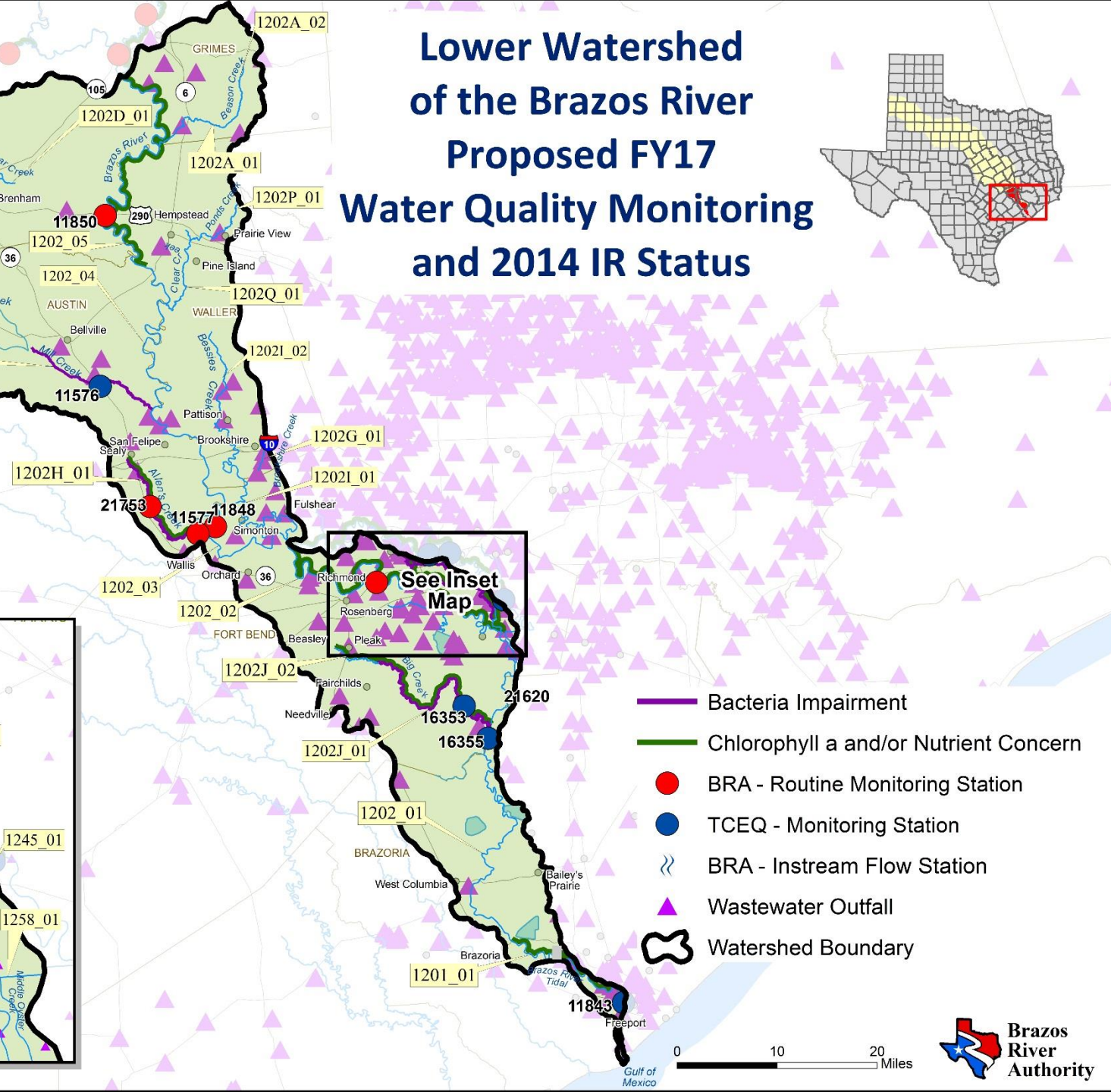
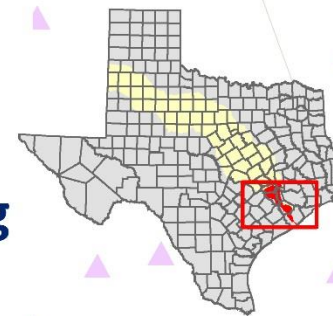




- 7 Bacteria
- 8 Nutrient/Chl a
- Two WMP Environmental Study stations: 21620 - Brazos River upstream of FM 1462 W of Rosharon and 11847 - Brazos River at FM 723 N of Rosenberg

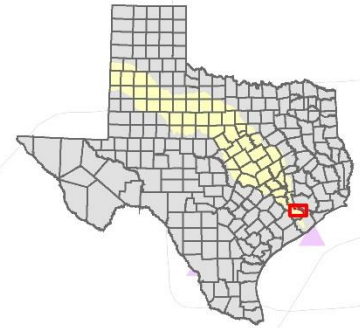


## Lower Watershed of the Brazos River Proposed FY17 Water Quality Monitoring and 2014 IR Status



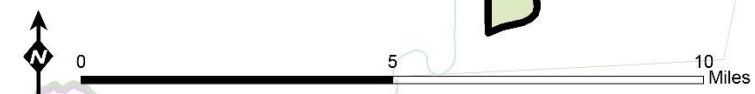


# Upper Oyster Creek Watershed Proposed FY17 Water Quality Monitoring and 2014 IR Status



- Chlorophyll a and/or Nutrient Concern
- TCEQ - Monitoring Station
- Wastewater Outfall
- Watershed Boundary

- 4 Nutrient/Chl a
- Upper Oyster Creek TMDL Implementation







Brazos River Authority



Brazos  
River  
Authority