



TCEQ, SBLGA

March 2008

Mission Statement

"The Texas Commission on Environmental Quality strives to protect our state's human and natural resources consistent with sustainable economic development. Our goal is clean air, clean water, and the safe management of waste."

TCEQ, SBLGA

March 2008

Waco – Region 9

- Bell
- Bosque
- Brazos
- Burleson
- Coryell
- Falls
- Freestone
- Grimes
- Hamilton
- Hill
- Lampasas
- Leon
- Limestone
- McLennan
- Madison
- Milam
- Mills
- Robertson
- San Saba
- Washington

TCEQ, SBLGA

March 2008

Region 9 - Waco is Unique!



TCEQ, SBLGA

March 2008

We have water!

Major Rivers:

- Brazos
- North Bosque
- Leon
- Lampasas
- Navasota

Major Lakes:

- Lake Waco
- Belton Lake
- Lake Whitney
- Lake Mexia
- Aquilla Reservoir
- Lake Somerville
- Lake Limestone

TCEQ, SBLGA

March 2008

Storm Water

- Point and non-point sources
- EPA delegated program
 - Texas Pollutant Discharge Elimination System (TPDES)
- General permits authorize storm water discharges
 - Multi-Sector General Permit (MSGP) aka Industrial
 - Construction
 - Small Municipal Separate Storm Sewer Systems (MS4)

TCEQ, SBLGA

March 2008

MSGP / Industrial

If a facility discharges storm water associated with an industrial activity ...

And the facility is one of the regulated industrial sectors...

Then a general permit (or individual permit) is required.

TCEQ, SBLGA

March 2008

Regulated Sectors

Includes but is not limited to:

- Rock and Sand Quarries
- Scrap Metal and Automobile Salvage Yards
- Power Plants
- Treatment Works (drinking water and wastewater)
- Landfills
- Airports
- Manufacturing (paper, electronics, chemical, food, textiles, rubber, machinery, metals, leather, etc.)

TCEQ, SBLGA

March 2008

MSGP...What's Required?

- Submit form and fee
- Adhere to requirements of permit
 - Develop and implement Storm Water Pollution Prevention Plan (SWP3)
 - Monitor and record discharges to comply with numeric effluent limits
 - Perform quarterly visual monitoring
 - Perform periodic inspections of controls
- Terminate permit when appropriate

TCEQ, SBLGA

March 2008

Construction

- Large Construction Sites
 - Equal to or greater than 5 acres of disturbed land **or** less than 5 acres but part of a larger common plan of development
- Small Construction Sites
 - Larger than 1, but less than 5 acres of disturbed land
- Not required (to permit)
 - Less than 1 acre

TCEQ, SBLGA

March 2008

Construction...What's Required?

- Best Management Practices (BMPs)
- Depends on site size and may include:
 - Submit form and fee
 - Develop and implement a Storm Water Pollution Prevention Plan (SWP3)
 - Notify MS4
 - Post notice and NOI at or near entrance
 - Adhere to requirements of permit
 - Monitor and record discharges
 - Inspect and maintain controls
 - Establish final stabilization (perennial vegetation)
 - Terminate permit when appropriate

TCEQ, SBLGA

March 2008

SWP3 aka The Plan

- Describe facility and schedule of activities
 - Drainage patterns, soil disturbance, structural controls, material and equipment storage, process flow, etc.
- Identify potential contaminants and receiving water
 - Sediment, sewage sludge, glue, paint, fuel, oil, trash, etc.
- Describe BMPs and maintain controls
 - Silt fences, earthen or rock berms, compost or mulch socks, inlet protection, sedimentation basins, retaining walls, velocity disruptors, containment, etc.
- Record maintenance and operator inspections
 - Vehicle entrances/exits, structural controls, material storage, areas of disturbed soil, etc.
- Keep on site or have readily available
- Update as needed

TCEQ, SBLGA

March 2008



Common Violations

- Failure to utilize structural controls for all downslope boundaries of the site
- Failure to maintain structural controls in effective operating condition
- Failure to post (NOI and/or CSN)
- Failure to conduct required monitoring
- Failure to prevent an unauthorized discharge

TCEQ, SBLGA March 2008





What is an MS4...exactly?

A conveyance or system of conveyances ...owned by the U.S., a state, city, county, town, or other public entity that discharges to water of the U.S. and is:

- Designed / used to collect or convey storm water (drainage, flood control, etc.)
- Not a combined sewer
- Not part of a POTW
- Includes publicly owned WSC and districts too – not just municipalities.

TCEQ, SBLGA

March 2008

New MS4s in Region 9

Waco area:

- Bellmead, Beverly Hills, Hewitt, Lacy-Lakeview, Robinson, and Woodway

Other cities:

- Belton, Bryan, College Station, Copperas Cove, Fort Hood, Harker Heights, Killeen, Morgan's Point Resort, Nolanville, and Temple

Counties:

- Bell, Brazos, Coryell, Lampasas, and McLennan

Other entities:

- Castleman Creek Watershed Association and Bell County Water Conservation Improvement Districts (WCID) # 1, 2, 3, 5 & 6

TCEQ, SBLGA

March 2008

MS4...What's Required?

Phase I = population of > 100,000

Phase II = population of < 100,000

Only required to regulate portion inside urbanized area (UA)

- **Urbanized Area:** a residential population of > / = 50,000 and > / = 1,000 people/square mile
- Submit form, fee and Storm Water Management Plan (SWMP) by **February 11, 2008**
- Post public notice and allow 30 days for public comment
- Fully implement the TCEQ approved SWMP by **August 13, 2012**

Exception: Waiver 1 possible for MS4s with population of < 1,000 in the UA.

TCEQ, SBLGA

March 2008

Storm Water Management Plan

SWMP technical requirements include a map of the storm water conveyance system and six minimum control measures:

- public education and outreach
- public involvement or participation
- detection and elimination of illicit discharges
- controls for storm water runoff from construction
- post-construction storm water management from new and re-development areas
- pollution prevention and "good housekeeping" for municipal operations

TCEQ, SBLGA

March 2008

How to be in compliance:

- Review and implement all applicable sections of the permit.
- Conduct routine monitoring and modify as needed.
- Contact the TCEQ for guidance.

TCEQ, SBLGA

March 2008

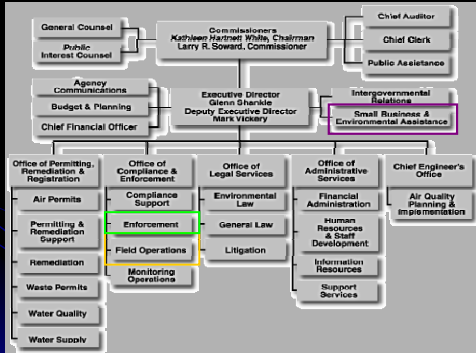
How do I contact TCEQ?

- **TCEQ Region 9 – Waco**
254-751-0335
6801 Sanger Avenue, Suite 2500
Waco, Texas 76710
- Storm Water Investigator, Jay Halepeska
254-761-3024 or jhalepes@tceq.state.tx.us
- **Web Pages:** www.tceq.com

TCEQ, SBLGA

March 2008

Agency Organization



TCEQ, SBLGA

March 2008

Small Business and Local Government Assistance



TCEQ, SBLGA

March 2008

Free and Confidential Technical Information



- Understanding regulations
- Achieving compliance
- Locating resources
- Developing rules
- Solving problems
- Saving money



TCEQ, SBLGA

March 2008

Tools and Resources

- Workshops, Seminars
- Comprehensive, multi-media checklists
- Industry-specific rule summaries
- Web pages with extensive information
- Quarterly Newsletter – *The Advocate*



TCEQ, SBLGA

March 2008

Who Does SBLGA Help?

- Airports
- Auto Body / Repair
- Building Contractors
- Car Washes
- Concrete Batch Plants
- Dry Cleaners
- Fleet Maintenance Shops
- Foundries
- **Local Governments**
- Manufacturing Facilities
- Metal Finishers
- PST Facilities (fuel)
- Public Water Systems
- Printers
- Reinforced Plastics Manufacturers
- Sawmills
- Water and Wastewater Plants
- Wood Producers

TCEQ, SBLGA

March 2008

How do I contact SBLGA?

- **Hotline: 1-800-447-2827**
 - Monday - Friday
 - 8:00 - 12:00 / 1:00 - 5:00
- Compliance Assistance, Polly Porter
254-761-3039 or pporter@tceq.state.tx.us
- Web Pages: www.sblga.info



TCEQ, SBLGA

March 2008

The End



TCEQ, SBLGA

March 2008