

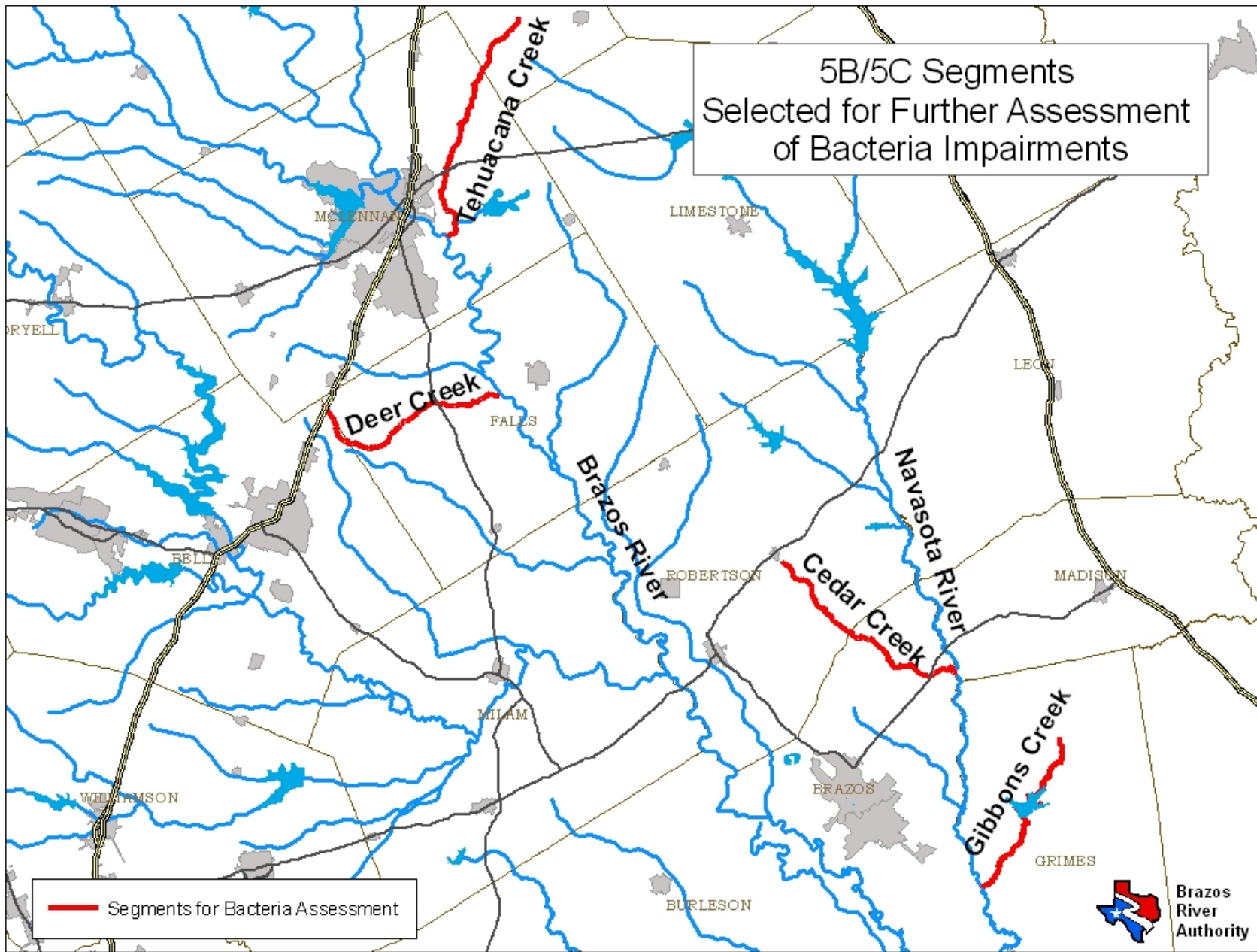


Upcoming Projects



Additional Data Collection to Address Selected 5B/5C Category Waterbodies in the Central and Lower Brazos River Basin

- **Tehuacana Creek, Deer Creek, Gibbons Creek, Cedar Creek, Resley Creek and Thompsons Creek are currently listed on the State's 303(d) List of impaired waterbodies**
- **Categorized in 5C, which means additional data and information needs to be collected before a Total Maximum Daily Load (TMDL) Study is scheduled.**
- **This project will collect the additional data necessary for TCEQ to determine what course of action is most appropriate to address the impairment**



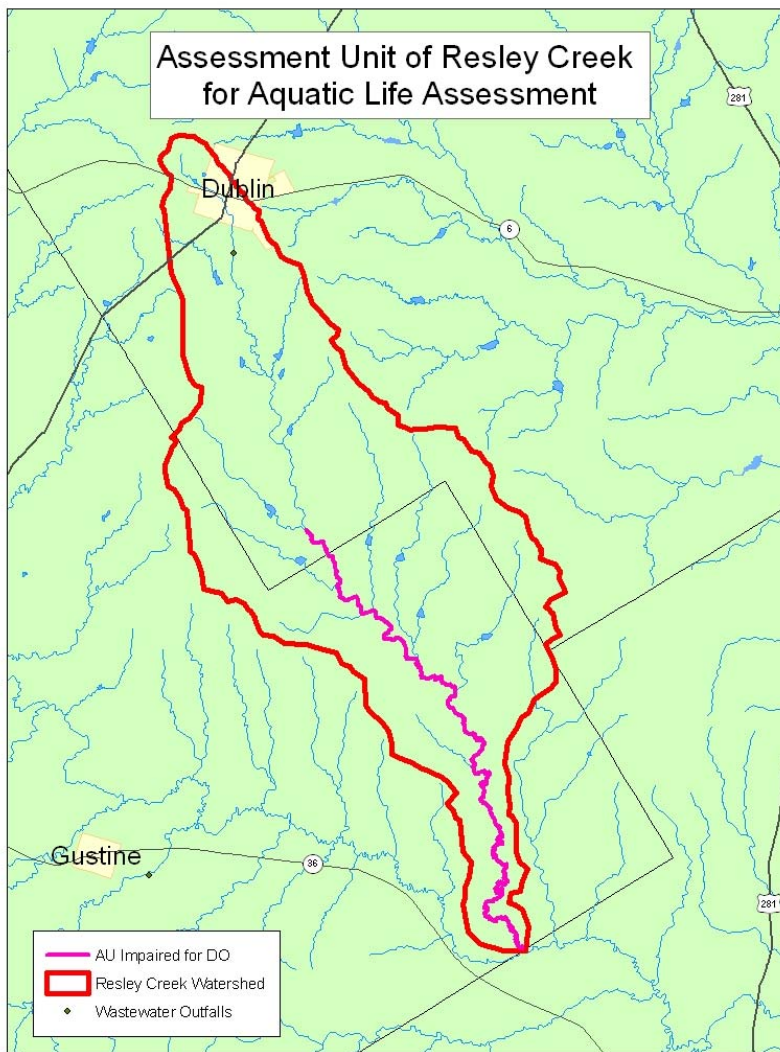


Bacteria Study

- **Monthly Water Sampling for Bacteria**
- **Continuous Flow Monitoring**
- **Land Use Analysis**
- **Watershed Surveys**



Bioassessments



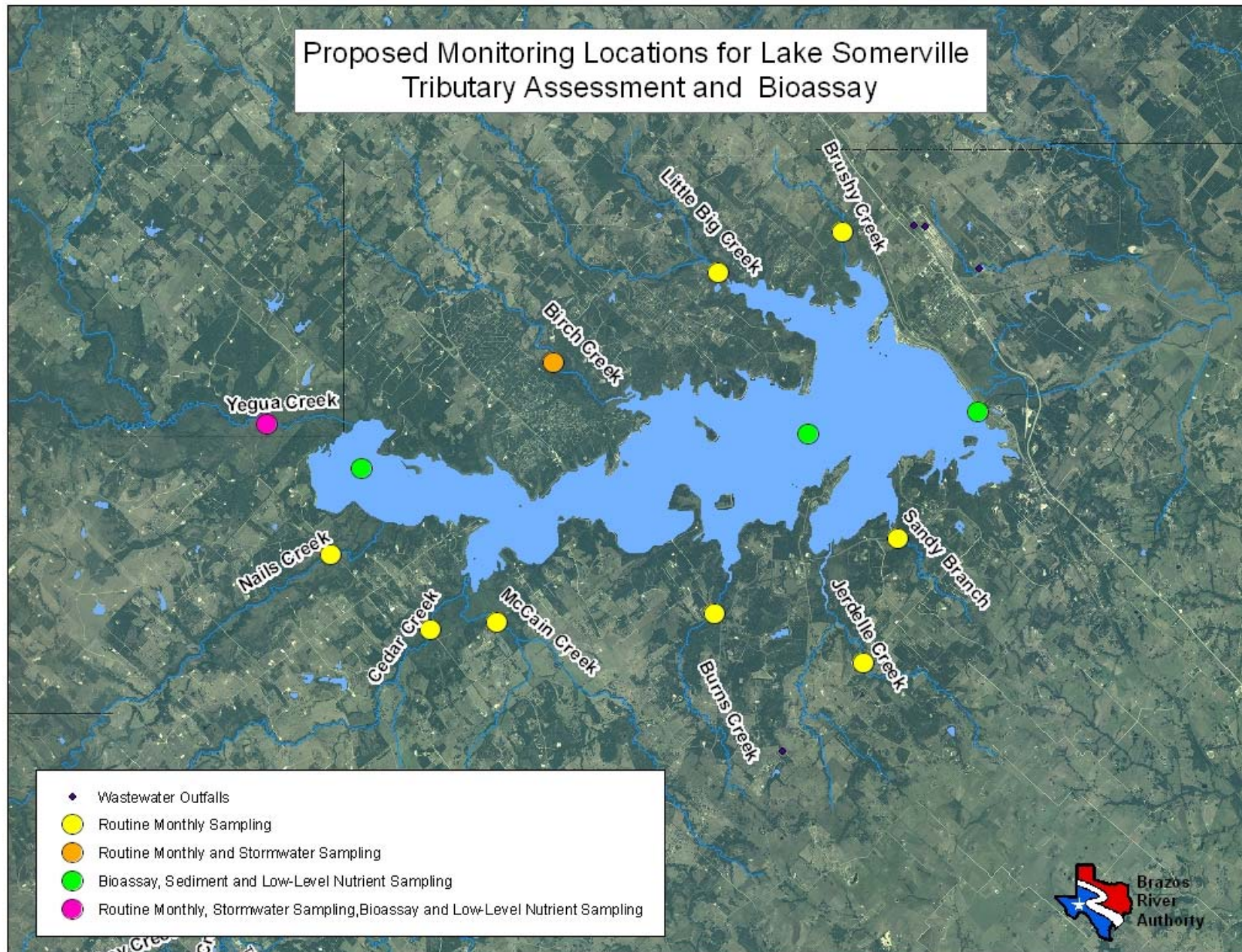


Bioassessments

- **Resley Creek – DO Impairment**
 - **Aquatic Life Assessment**
 - 4 biological assessments
 - 4 24hr-DO assessments
- **Thompsons Creek – DO Impairment**
 - **Use Attainability Assessment**
 - 3 biological assessments
 - 3 24hr-DO assessments



Proposed Monitoring Locations for Lake Somerville Tributary Assessment and Bioassay





Lake Somerville pH Assessment

- **Monthly Monitoring of 10 tributary streams**
- **Stormwater monitoring on Yegua Creek and Birch microwatersheds**
- **Algal counts and identification on 3 lake sites and Yegua Creek**
- **Algal assay on 3 lake sites and Yegua Creek**
- **Phosphorus Sorption and Fractionation Characteristics of Lake Sediments**
- **Low-level nutrient analysis on 3 lake sites and Yegua Creek**
- **Land Use Analysis for Lake Somerville watershed**



Brazos
River
Authority