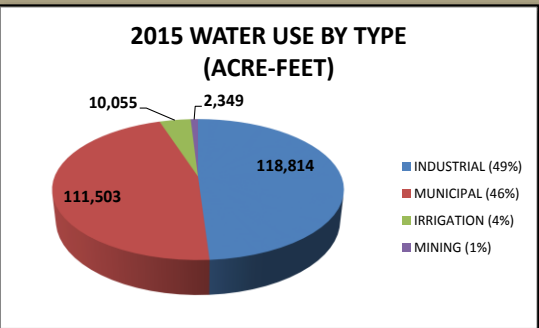


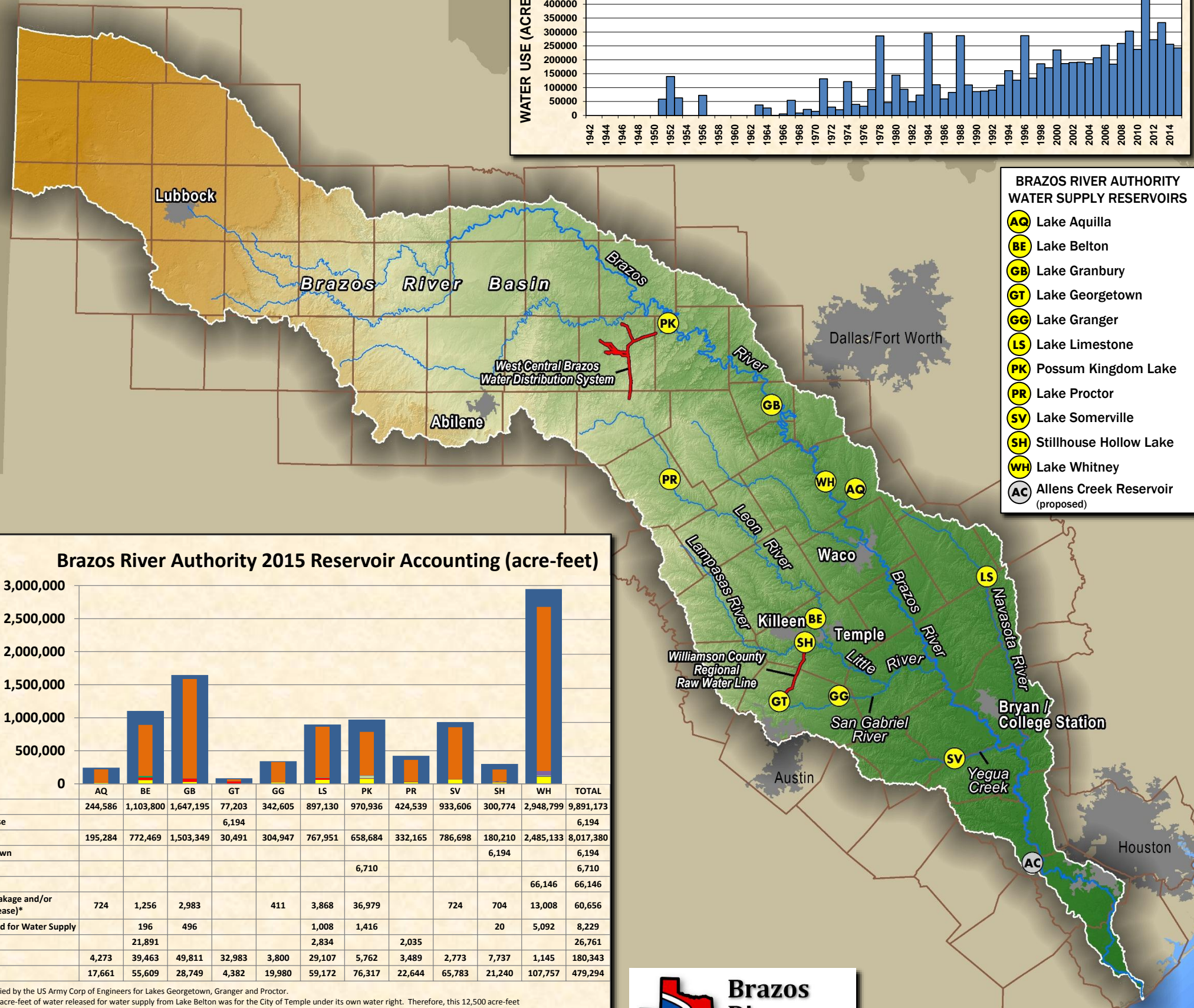
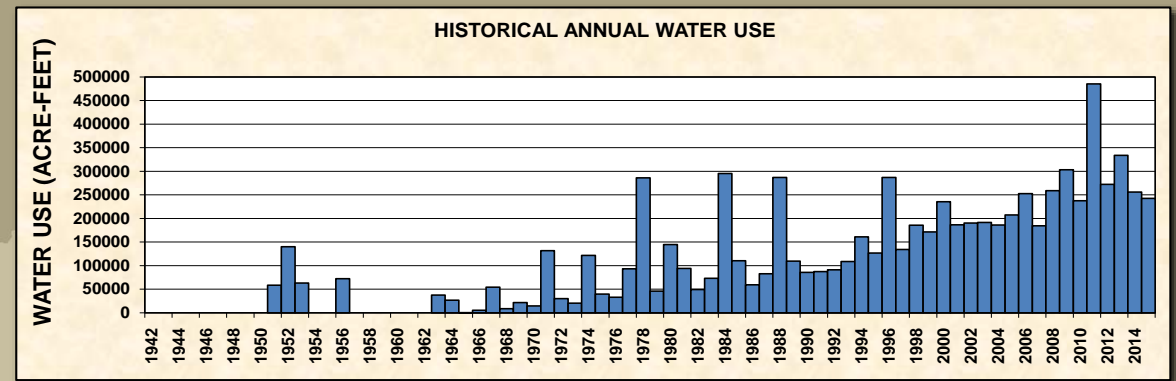
# Brazos River Authority 2015 Customer Water Use and Reservoir Accounting Summary

| 2015 WATER USE BY FIRM WATER CUSTOMERS             | VOLUME (ACRE-FEET) |
|--|--------------------|
| <b>POSSUM KINGDOM LAKE</b>                         |                    |
| DOUBLE DIAMOND PROPERTIES, INC                     | 674                |
| POSSUM KINGDOM WSC                                 | 1,033              |
| RANCH OWNER'S ASSOCIATION                          | 147                |
| SPORTSMAN'S WORLD MUD                              | 186                |
| TEXAS PARKS & WILDLIFE DEPT.                       | 962                |
| WEST CENTRAL BRAZOS PIPELINE                       | 2,282              |
| <b>SUBTOTAL:</b>                                   | <b>5,284</b>       |
| <b>BRAZOS RIVER BELOW POSSUM KINGDOM LAKE</b>      |                    |
| CARR-THOMAS RANCH                                  | 5                  |
| JAY MILLS CONTRACTING, INC                         | 2                  |
| PALO PINTO CO. MWD NO. 1                           | 152                |
| SUGAR TREE, INC.                                   | 191                |
| PARKER COUNTY SUD                                  | 301                |
| VULCAN CONST. MATERIALS, L.P.                      | 122                |
| <b>SUBTOTAL:</b>                                   | <b>773</b>         |
| <b>LAKE GRANBURY</b>                               |                    |
| ACTON MUNICIPAL UTILITY DIST.                      | 8                  |
| BRAZOS REGIONAL PUBLIC UTILITY AGENCY              | 3,043              |
| DECORDOVA BEND ESTATES OWNERS                      | 75                 |
| GRANBURY RECREATIONAL ASSOC                        | 20                 |
| GRANBURY, CITY OF                                  | 218                |
| KING RANCH TURFGRASS, L.P.                         | 94                 |
| LENMO INC.   | 1,665              |
| LSF DEVELOPMENT CORP.                              | 37                 |
| MONARCH UTILITIES I, L.P.                          | 522                |
| PECAN PLANTATION OWNER'S ASSOC                     | 234                |
| TXU - LUMINANT ELECTRIC COMPANY                    | 40,479             |
| WOLF HOLLOW SERVICES, LLC                          | 1,979              |
| <b>SUBTOTAL:</b>                                   | <b>48,374</b>      |
| <b>BRAZOS RIVER BELOW LAKE GRANBURY</b>            |                    |
| EOG RESOURCES INC. WESTERN DIV                     | 129                |
| <b>SUBTOTAL:</b>                                   | <b>129</b>         |
| <b>LAKE WHITNEY</b>                                |                    |
| WHITE BLUFF PROPERTY OWNERS ASSOC                  | 626                |
| <b>BRAZOS RIVER BELOW LAKE WHITNEY</b>             |                    |
| CALPINE BOSQUE ENERGY CENTER LLC                   | 3,747              |
| LORENA, CITY OF                                    | 182                |
| NRG TEXAS, LLC                                     | 39,888             |
| SELECT ENERGY SERVICES LLC                         | 509                |
| VULCAN CONST. MATERIALS, L.P.                      | 129                |
| <b>SUBTOTAL:</b>                                   | <b>44,455</b>      |
| <b>LAKE AQUILLA</b>                                |                    |
| AQUILLA WATER SUPPLY DISTRICT                      | 2,345              |
| CLEBURNE, CITY OF                                  | 1,927              |
| <b>SUBTOTAL:</b>                                   | <b>4,273</b>       |
| <b>LAKE PROCTOR</b>                                |                    |
| LAKE PROCTOR IRRIGATION AUTH.                      | 568                |
| UPPER LEON RIVER MUNICIPAL                         | 2,766              |
| <b>SUBTOTAL:</b>                                   | <b>3,334</b>       |
| <b>LEON RIVER BELOW LAKE PROCTOR</b>               |                    |
| LAKE PROCTOR IRRIGATION AUTH.                      | 356                |
| NORTH LEON RIVER IRRIGATION                        | 1,679              |
| <b>SUBTOTAL:</b>                                   | <b>2,035</b>       |
| <b>LAKE BELTON</b>                                 |                    |
| 439 WATER SUPPLY CORP.                             | 196                |
| BELL CO. WATER CONTROL & IMP.                      | 30,559             |
| CORYELL CITY WATER SUPPLY DIST                     | 300                |
| FORT GATES WSC                                     | 200                |
| THE GROVE WATER SUPPLY CORP.                       | 143                |
| BLUEBONNET WATER SUPPLY CORP.                      | 2,815              |
| GATESVILLE, CITY OF                                | 5,228              |
| <b>SUBTOTAL:</b>                                   | <b>39,442</b>      |
| <b>LEON RIVER BELOW LAKE BELTON</b>                |                    |
| TEMPLE, CITY OF                                    | 9,391              |
| WILDFLOWER COUNTRY CLUB, INC.                      | 196                |
| <b>SUBTOTAL:</b>                                   | <b>9,587</b>       |
| <b>LAKE STILLHOUSE HOLLOW</b>                      |                    |
| CENTRAL TEXAS WATER SUPPLY CORP.                   | 3,660              |
| KEMPNER WATER SUPPLY CORP.                         | 2,400              |
| LAMPASAS, CITY OF                                  | 1,676              |
| <b>SUBTOTAL:</b>                                   | <b>7,736</b>       |
| <b>LAMPASAS RIVER BELOW LAKE STILLHOUSE HOLLOW</b> |                    |
| COUNTRY HARVEST                                    | 2                  |
| <b>LAKE GEORGETOWN</b>                             |                    |
| GEORGETOWN, CITY OF                                | 7,924              |
| ROUND ROCK, CITY OF                                | 19,473             |
| BRUSHY CREEK MUD                                   | 2,670              |
| CHISHOLM TRAIL SUD                                 | 2,916              |
| <b>SUBTOTAL:</b>                                   | <b>32,983</b>      |
| <b>LAKE GRANGER</b>                                |                    |
| EAST WILLIAMSON CO WATER                           | 3,800              |
| <b>LAKE LIMESTONE</b>                              |                    |
| NRG TEXAS, LLC                                     | 11,377             |
| SLC WATER SUPPLY                                   | 105                |
| TXU - LUMINANT ELECTRIC COMPANY                    | 14,179             |
| <b>SUBTOTAL:</b>                                   | <b>25,662</b>      |
| <b>NAVASOTA RIVER BELOW LAKE LIMESTONE</b>         |                    |
| SELECT ENERGY SERVICES LLC                         | 17                 |
| TEXAS MUNICIPAL POWER AGENCY                       | 2,835              |
| WELLBORN SPECIAL UTILITY DIST.                     | 922                |
| <b>SUBTOTAL:</b>                                   | <b>3,774</b>       |
| <b>LAKE SOMERVILLE</b>                             |                    |
| BRENHAM, CITY OF                                   | 2,773              |
| <b>TOTAL</b>                                       | <b>235,042</b>     |

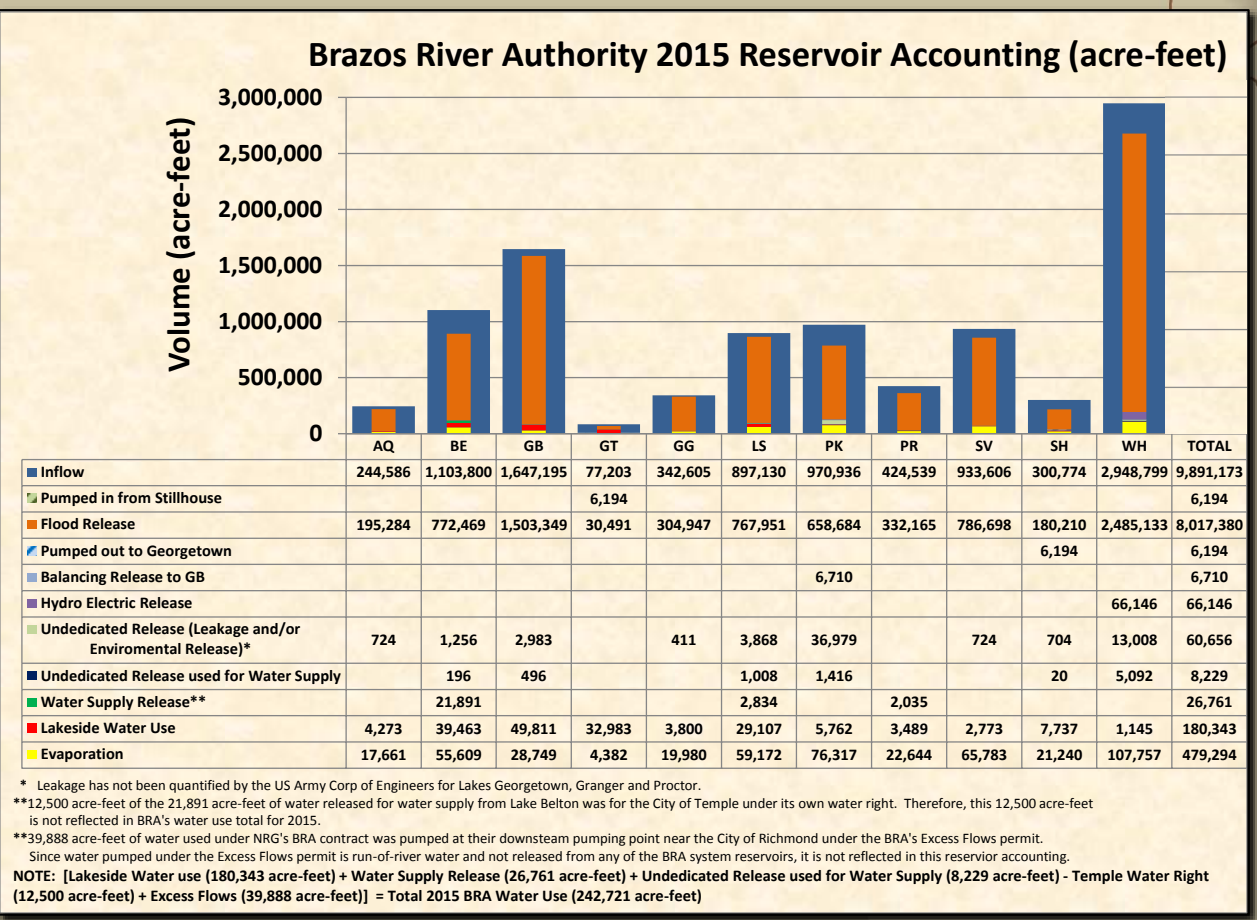
**2015 TOTAL WATER USE**  
242,721 Acre-Feet



| 2015 WATER USE BY INTERRUPTIBLE AND LAKESIDE LOCAL WATER CUSTOMERS | VOLUME (ACRE-FEET) |
|--|--------------------|
| <b>POSSUM KINGDOM LAKE</b>   |                    |
| HILL COUNTRY HARBOR, L.P.  | 123                |
| LAKESHORE HOME OWNERS  | 0.6                |
| PK LAND DEVELOPMENT, INC.  | 1                  |
| TEXAS PARKS & WILDLIFE DEPT.                                       | 8                  |
| WACO BEND RANCH, LTD   | 15                 |
| LAKESIDE LOCAL USE   | 245                |
| WEST CENTRAL BRAZOS PIPELINE                                       | 85                 |
| <b>SUBTOTAL:</b>   | <b>478</b>         |
| <b>BRAZOS RIVER BELOW POSSUM KINGDOM LAKE</b>                      |                    |
| J&J LAND & LIVESTOCK CO  | 6                  |
| JAY MILLS CONTRACTING, INC   | 0.3                |
| <b>SUBTOTAL:</b>   | <b>7</b>           |
| <b>LAKE GRANBURY</b>   |                    |
| COUNTY OF SOMERVELL  | 232                |
| LENMO INC.   | 877                |
| LAKESIDE LOCAL USE   | 327                |
| <b>SUBTOTAL:</b>   | <b>1,437</b>       |
| <b>BRAZOS RIVER BELOW LAKE GRANBURY</b>                            |                    |
| BRANDON MABERY   | 14                 |
| EOG RESOURCES INC. WESTERN DIV                                     | 18                 |
| INGRAM CONCRETE LLC  | 45                 |
| LATTIMORE MATERIALS  | 229                |
| LOWELL UNDERWOOD   | 45                 |
| RYAN HOUSTON   | 15                 |
| <b>SUBTOTAL:</b>   | <b>367</b>         |
| <b>LAKE WHITNEY</b>  |                    |
| DOUBLE DIAMOND PROPERTIES, INC                                     | 256                |
| WHITE BLUFF PROPERTY OWNERS ASSOC                                  | 251                |
| LAKESIDE LOCAL USE   | 13                 |
| <b>SUBTOTAL:</b>   | <b>519</b>         |
| <b>BRAZOS RIVER BELOW LAKE WHITNEY</b>                             |                    |
| 3-D FARMS  | 28                 |
| ANADARKO PETROLEUM CORPORATION                                     | 40                 |
| BIG CREEK CONSTRUCTION   | 0.1                |
| CREEKSIDE NURSERY, LLC   | 82                 |
| HORIZON TURF GRASS, INC.   | 92                 |
| KNIFE RIVER CORPORATION  | 1                  |
| MARECEK LAND & CATTLE LLC  | 575                |
| CHARLES R. MATTHEWS  | 10                 |
| JAMES K. BOYD  | 2                  |
| NEUHAUS TRUSTS PARTNERSHIP   | 260                |
| W. T. HELBERT FAMILY TRUST   | 72                 |
| <b>SUBTOTAL:</b>   | <b>1,163</b>       |
| <b>LAKE PROCTOR</b>  |                    |
| LAKESIDE LOCAL USE   | 0.4                |
| SEARS BROTHERS   | 155                |
| <b>SUBTOTAL:</b>   | <b>155</b>         |
| <b>LAKE BELTON</b>   |                    |
| LAKESIDE LOCAL USE   | 21                 |
| <b>LAKE STILLHOUSE HOLLOW</b>                                      |                    |
| LAKESIDE LOCAL USE   | 1                  |
| <b>LAMPASAS RIVER BELOW LAKE STILLHOUSE HOLLOW</b>                 |                    |
| THOMAS LOVELACE  | 17                 |
| <b>LAKE LIMESTONE</b>  |                    |
| NRG TEXAS, LLC   | 3,332              |
| XTO ENERGY   | 19                 |
| LAKESIDE LOCAL USE   | 95                 |
| <b>SUBTOTAL:</b>   | <b>3,446</b>       |
| <b>NAVASOTA RIVER BELOW LAKE LIMESTONE</b>                         |                    |
| HAWKWOOD ENERGY OPERATING, LLC                                     | 33                 |
| NEW GULF RESOURCES, LLC  | 16                 |
| ROSEWOOD RESOURCES, INC.   | 18                 |
| <b>SUBTOTAL:</b>   | <b>68</b>          |
| <b>TOTAL</b>   | <b>7,679</b>       |



- BRAZOS RIVER AUTHORITY WATER SUPPLY RESERVOIRS**
- AQ** Lake Aquilla
  - BE** Lake Belton
  - GB** Lake Granbury
  - GT** Lake Georgetown
  - GG** Lake Granger
  - LS** Lake Limestone
  - PK** Possum Kingdom Lake
  - PR** Lake Proctor
  - SV** Lake Somerville
  - SH** Stillhouse Hollow Lake
  - WH** Lake Whitney
  - AC** Allens Creek Reservoir (proposed)



Data source: Brazos River Authority  
 Note: This graphic was updated on March 16, 2017, to correct the allocation of water used by interruptible and firm water customers associated with the West Central Brazos Pipeline. The total volume of water used did not change. All other information remains unchanged.