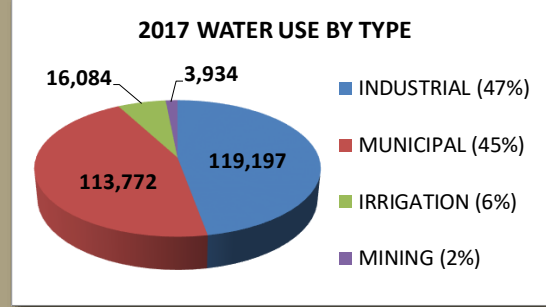


Brazos River Authority 2017 Customer Water Use and Reservoir Accounting Summary

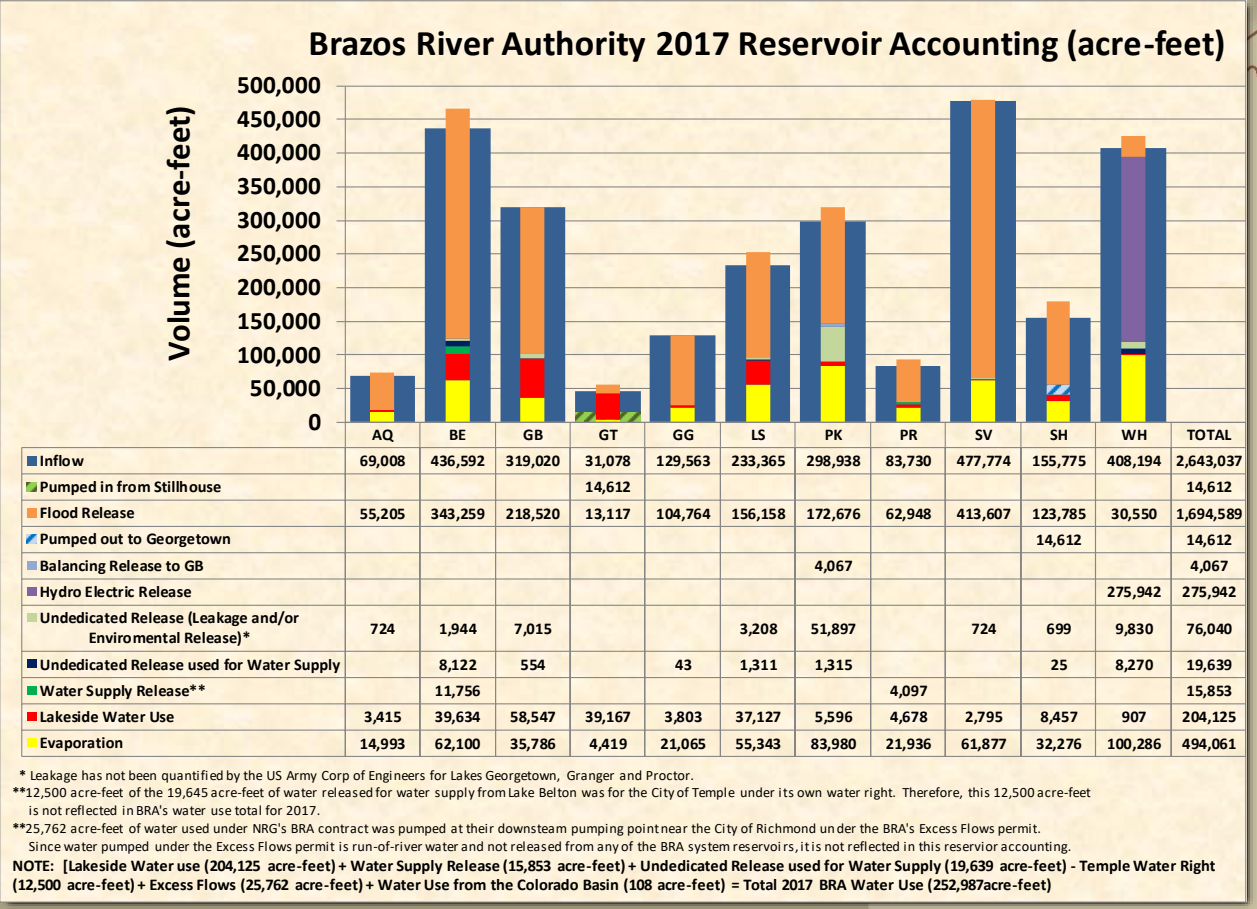
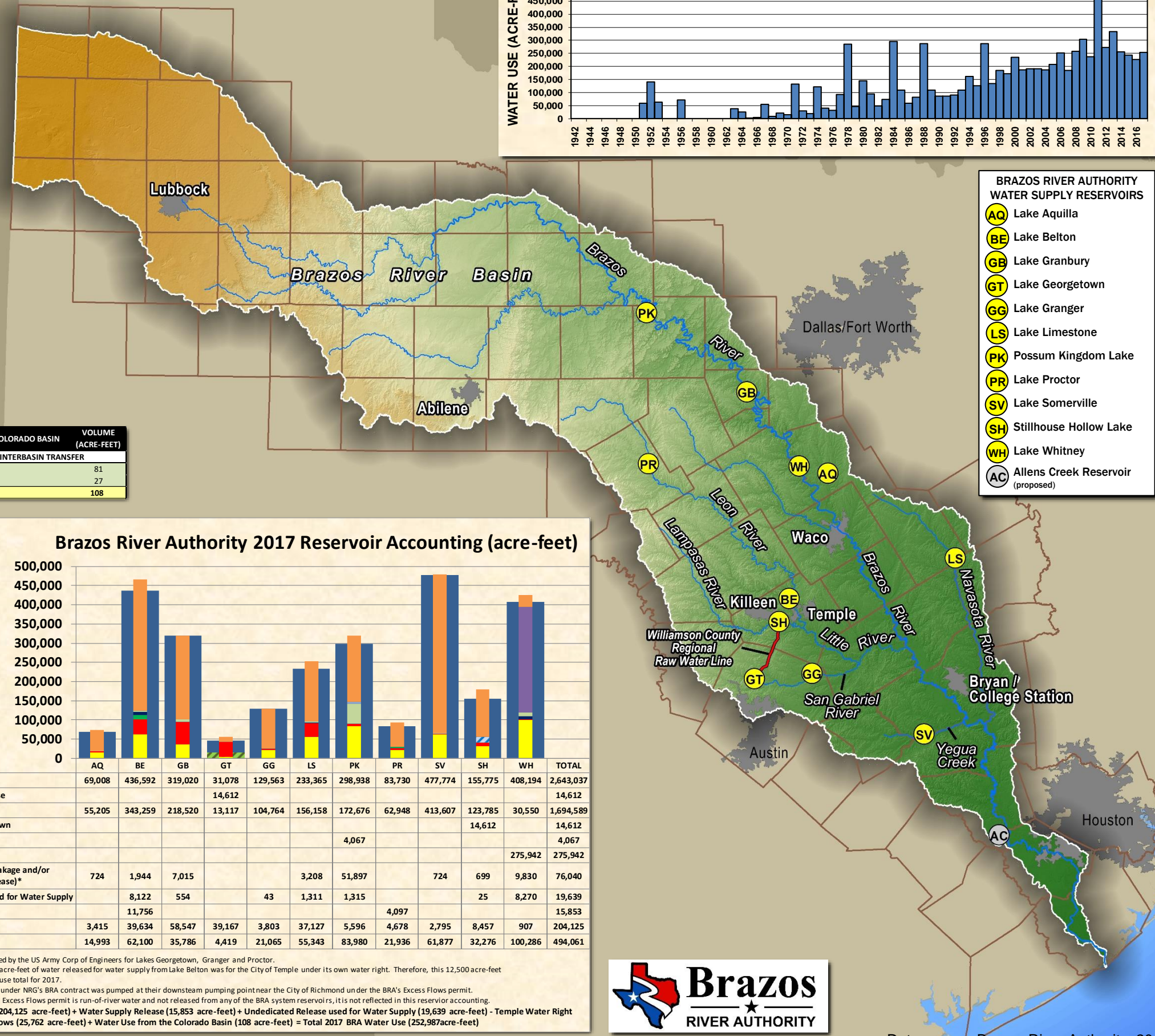
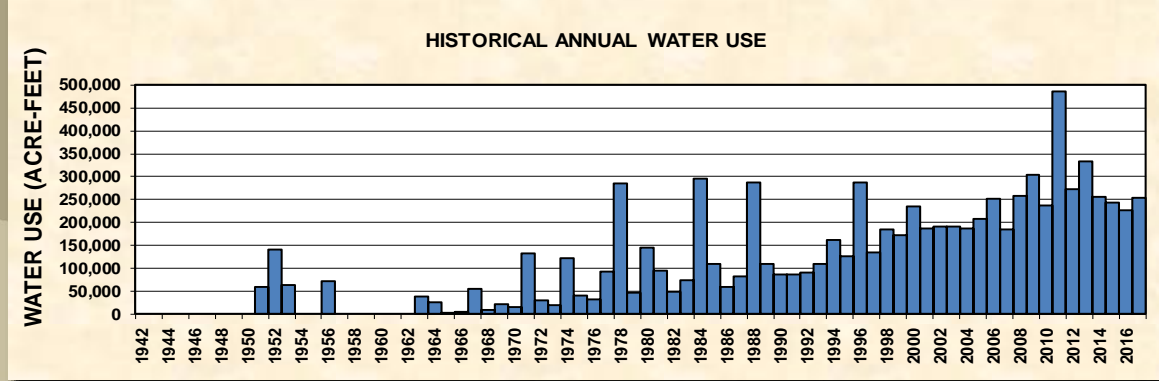
2017 WATER USE BY FIRM WATER CUSTOMERS		VOLUME (ACRE-FEET)
POSSUM KINGDOM LAKE		
DOUBLE DIAMOND PROPERTIES, INC	635	
POSSUM KINGDOM WSC	750	
RANCH OWNER'S ASSOCIATION	169	
SPORTSMAN'S WORLD MUD	173	
TEXAS PARKS & WILDLIFE DEPT.	731	
WEST CENTRAL BRAZOS PIPELINE	2,161	
SUBTOTAL:	4,619	
BRAZOS RIVER BELOW POSSUM KINGDOM LAKE		
CARR-THOMAS RANCH	6	
PARKER COUNTY SUD	563	
SUGAR TREE, INC.	284	
VULCAN CONST. MATERIALS, L.P.	462	
SUBTOTAL:	1,315	
LAKE GRANBURY		
ACTON MUNICIPAL UTILITY DIST.	11	
BRAZOS REGIONAL PUBLIC UTILITY AGENCY	2,328	
DECORDOVA BEND ESTATES OWNERS	165	
GRANBURY RECREATIONAL ASSOC	22	
GRANBURY, CITY OF	240	
KING RANCH TURFGRASS, L.P.	61	
LENMO INC.	2,000	
LSF DEVELOPMENT CORP.	55	
MONARCH UTILITIES I, L.P.	459	
PECAN PLANTATION OWNER'S ASSOC	184	
REX R. WORRELL	179	
TXU - LUMINANT ELECTRIC COMPANY	49,606	
WOLF HOLLOW SERVICES, LLC	2,194	
SUBTOTAL:	57,503	
LAKE WHITNEY		
WHITE BLUFF PROPERTY OWNERS ASSOC	396	
BRAZOS RIVER BELOW LAKE WHITNEY		
CALPINE BOSQUE ENERGY CENTER LLC	3,589	
LORENA, CITY OF	73	
NRG TEXAS, LLC	25,762	
VULCAN CONST. MATERIALS, L.P.	702	
SUBTOTAL:	30,126	
LAKE AQUILLA		
AQUILLA WATER SUPPLY DISTRICT	2,311	
CLEBURNE, CITY OF	1104	
SUBTOTAL:	3,415	
LAKE PROCTOR		
LAKE PROCTOR IRRIGATION AUTH.	1,816	
UPPER LEON RIVER MUNICIPAL	2,742	
SUBTOTAL:	4,558	
LEON RIVER BELOW LAKE PROCTOR		
LAKE PROCTOR IRRIGATION AUTH.	1,240	
NORTH LEON RIVER IRRIGATION	2,857	
SUBTOTAL:	4,097	
LAKE BELTON		
439 WATER SUPPLY CORP.	325	
BELL CO. WATER CONTROL & IMP.	31,091	
BLUEBONNET WATER SUPPLY CORP.	2,759	
CORYELL CITY WATER SUPPLY DIST	300	
FORT GATES WSC	200	
GATESVILLE, CITY OF	4,769	
THE GROVE WATER SUPPLY CORP.	174	
SUBTOTAL:	39,617	
LEON RIVER BELOW LAKE BELTON		
ALCOA, INC.	67	
TEMPLE, CITY OF	7,145	
WILDFLOWER COUNTRY CLUB, INC.	166	
SUBTOTAL:	7,378	
LAKE STILLHOUSE HOLLOW		
CENTRAL TEXAS WATER SUPPLY CORP.	3,692	
KEMPNER WATER SUPPLY CORP.	3,250	
LAMPASAS, CITY OF	1,515	
SUBTOTAL:	8,457	
LAMPASAS RIVER BELOW LAKE STILLHOUSE HOLLOW		
COUNTRY HARVEST	5	
LAKE GEORGETOWN		
BRUSHY CREEK MUD	3,027	
GEORGETOWN, CITY OF	15,163	
ROUND ROCK, CITY OF	20,976	
SUBTOTAL:	39,167	
LAKE GRANGER		
EAST WILLIAMSON CO. REGIONAL WATER SYSTEM	3,803	
LAKE LIMESTONE		
NRG TEXAS, LLC	15,143	
SLC WATER SUPPLY	100	
TXU - LUMINANT ELECTRIC COMPANY	21,633	
SUBTOTAL:	36,877	
NAVASOTA RIVER BELOW LAKE LIMESTONE		
WELLBORN SPECIAL UTILITY DIST.	644	
LAKE SOMERVILLE		
BRENHAM, CITY OF	2,795	
TOTAL	244,769	

2017 TOTAL WATER USE
252,987 Acre-Feet



2017 WATER USE BY INTERRUPTIBLE AND LAKESIDE LOCAL WATER CUSTOMERS		VOLUME (ACRE-FEET)
POSSUM KINGDOM LAKE		
BR AT POSSUM KINGDOM, LTD	7	
HILL COUNTRY HARBOR, L.P.	612	
LAKESHORE HOME OWNERS	0.3	
PK LAND DEVELOPMENT, INC.	2	
TEXAS PARKS & WILDLIFE DEPT.	10	
WACO BEND RANCH, LTD	19	
LAKESIDE LOCAL USE	242	
WEST CENTRAL BRAZOS PIPELINE	85	
SUBTOTAL:	976	
LAKE GRANBURY		
LENMO INC.	700	
LAKESIDE LOCAL USE	330	
THOMAS BROS GRASS, LLC	13	
SUBTOTAL:	1,044	
BRAZOS RIVER BELOW LAKE GRANBURY		
EKG RESOURCES INC. WESTERN DIV	21	
INGRAM CONCRETE, LLC	80	
LATTIMORE MATERIALS	265	
LOWELL UNDERWOOD	30	
RYAN HOUSTON	157	
SUBTOTAL:	554	
LAKE WHITNEY		
DOUBLE DIAMOND PROPERTIES, INC	200	
WHITE BLUFF PROPERTY OWNERS ASSOC	300	
LAKESIDE LOCAL USE	11	
WESTON SOLUTIONS, INC.	1	
SUBTOTAL:	512	
BRAZOS RIVER BELOW LAKE WHITNEY		
3-D FARMS	323	
BIG CREEK CONSTRUCTION	266	
JAMES K. BOYD	9	
BRAZOS FARMS LTD., INC.	204	
BURLESON WATER RESOURCES, LLC	390	
CREEKSIDE NURSERY, LLC	214	
HORIZON TURF GRASS, INC.	306	
KNIFE RIVER CORPORATION	15	
KOTRLA FARMS	136	
NEUHAUS TRUSTS PARTNERSHIP	395	
MARECEK LAND & CATTLE, LLC	561	
TENNESSEE GAS PIPELINE CO, LLC	17	
TREADSTONE ENERGY PARTNERS OPERATING, LLC	202	
VULCAN CONSTRUCTION MATERIALS, L.P.	592	
W. T. HELBERT FAMILY TRUST	276	
SUBTOTAL:	3,905	
LAKE PROCTOR		
LAKESIDE LOCAL USE	0.4	
SEARS BROTHERS	120.3	
SUBTOTAL:	121	
LAKE BELTON		
LAKESIDE LOCAL USE	17	
LITTLE RIVER BELOW LAKE BELTON		
ALCOA, INC.	43	
LAKE STILLHOUSE HOLLOW		
LAKESIDE LOCAL USE	1	
LAMPASAS RIVER BELOW LAKE STILLHOUSE HOLLOW		
THOMAS LOVELACE	21	
LAKE LIMESTONE		
LAKESIDE LOCAL USE	95	
LINN OPERATING, LLC	67	
XTO ENERGY	88	
SUBTOTAL:	250	
NAVASOTA RIVER BELOW LAKE LIMESTONE		
HAWKWOOD ENERGY OPERATING, LLC	591	
ROSEWOOD RESOURCES, INC.	76	
SUBTOTAL:	667	
TOTAL	8,110	

2017 WATER USE FROM THE COLORADO BASIN		VOLUME (ACRE-FEET)
BRAZOS - COLORADO INTERBASIN TRANSFER		
LIBERTY HILL, CITY OF	81	
ROUND ROCK, CITY OF	27	
TOTAL	108	



* Leakage has not been quantified by the US Army Corp of Engineers for Lakes Georgetown, Granger and Proctor.
 **12,500 acre-feet of the 19,645 acre-feet of water released for water supply from Lake Belton was for the City of Temple under its own water right. Therefore, this 12,500 acre-feet is not reflected in BRA's water use total for 2017.
 ***25,762 acre-feet of water used under NRG's BRA contract was pumped at their downstream pumping point near the City of Richmond under the BRA's Excess Flows permit. Since water pumped under the Excess Flows permit is run-of-river water and not released from any of the BRA system reservoirs, it is not reflected in this reservoir accounting.
NOTE: [Lakeside Water use (204,125 acre-feet) + Water Supply Release (15,853 acre-feet) + Undedicated Release used for Water Supply (19,639 acre-feet) - Temple Water Right (12,500 acre-feet) + Excess Flows (25,762 acre-feet) + Water Use from the Colorado Basin (108 acre-feet) = Total 2017 BRA Water Use (252,987 acre-feet)]

