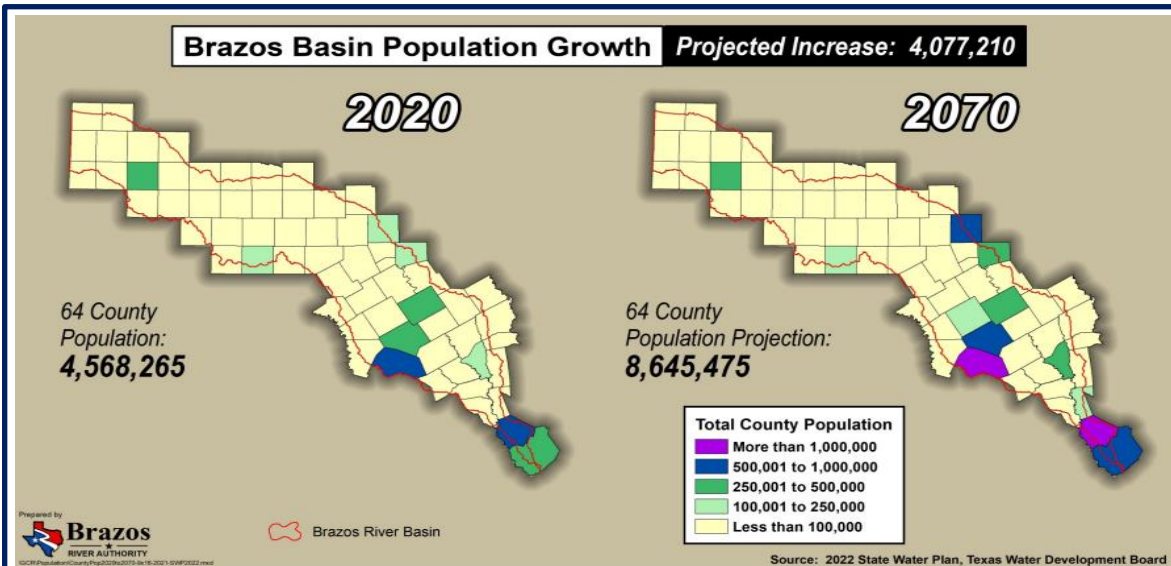




# Integrated Water Resources Plan

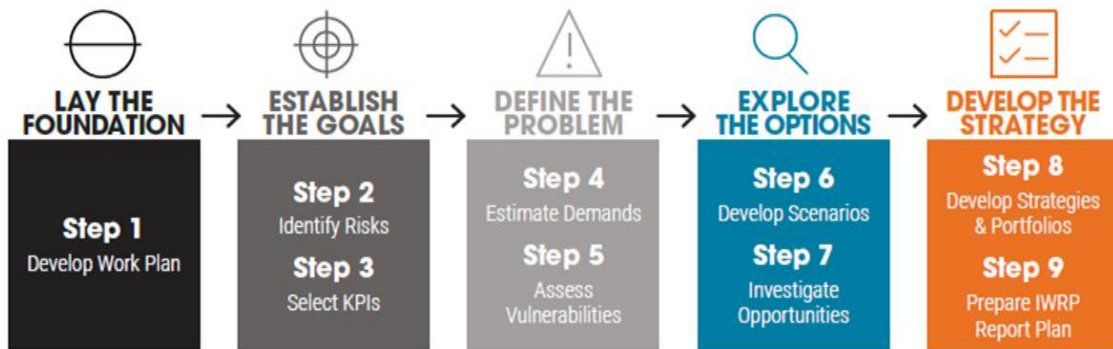


## The Project

Internal analyses, regional water plans, and requests from current/potential customers indicate that additional water supplies are needed to meet future water demands. The Integrated Water Resources Plan (IWRP) will: 1) develop an inventory of strategies to create water supplies and scenarios of potential combinations of water supply strategies, 2) assess the effectiveness of scenarios in meeting various combinations of timing and location of demands and 3) consider the impact on reliable supply, factors of safety, System Rate implications etc. to recommend strategy scenarios for implementation. The IWRP will convey actions in a manner that simplifies critical decision making related to new water supply opportunities and management of water supply within the BRA water supply system. Furthermore, the information from the IWRP can be integrated into the regional and state water planning process. Throughout the development of the IWRP, engagement of BRA's customers and other stakeholders will be sought in a transparent and proactive manner.

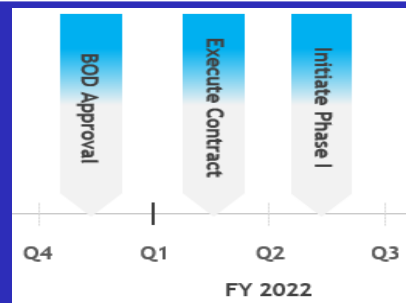
## Current Project Status 10/29/2021

- The BRA Board of Directors approved the BRA to contract with Stantec Consulting Services Inc. for this project
- Contract executed in FY22 Q1
- Phase I is being initiated in FY22 Q2
- Phase I will focus on the Little River System
- Estimated Phase I completion is 18 months from the start date in FY22 Q2



## Planned Schedule

Note: BRA Fiscal Year Runs Sept to Aug



## Budget Summary

|                  |           |
|------------------|-----------|
| FY 2022 Budget   | \$500,000 |
| Project Expenses | \$0       |