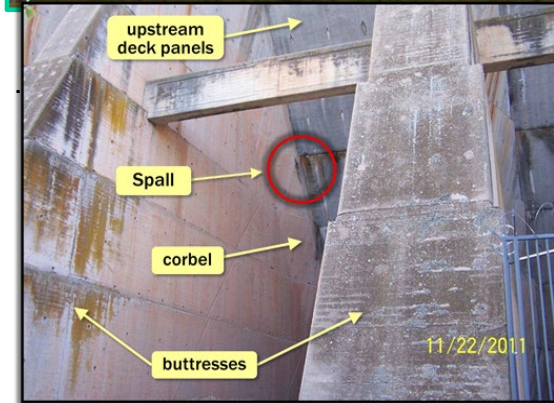




# Morris Sheppard Dam

## Concrete Assessment and Service Life Extension Project



Morris Sheppard Dam was completed in 1941 to create Possum Kingdom Lake. The dam has been in service for more than 80 years. To extend the service life of the dam, the BRA will evaluate the condition of the concrete components of the structure and develop successive steps to maximize the useful service life of the dam.

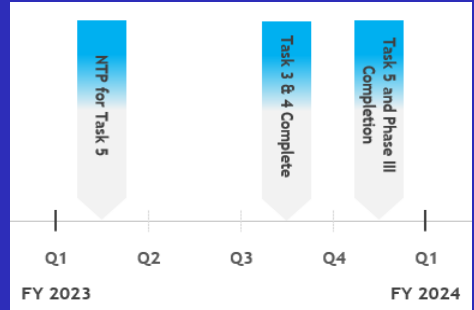
### The Project

The BRA contracted with Gannett Fleming, Inc. to perform a phased approach that will result in recommendations for remediation actions for the dam. Phase I tasks included a comprehensive data review, simplified structural analysis, failure mode analysis, risk analysis, and development of a targeted and credible investigation and testing program. Phase II consisted of executing the investigation and testing program defined in Phase I. Phase III consists of targeted destructive testing and investigation, Failure Mode Progression Structural Analysis, development of a long-term testing and repair program and remediation of a span on the Level 2 Walkway Bridge.

### Current Phase III Project Status 7/14/2023

- Task 1 Final Data Summary Report finalized
- Task 2 Failure Mode Progression Structural Analysis report finalized
- Task 3 Bay 31 Destructive Investigation Summary finalized
- Task 4 Long-Term Structural Concrete Testing and Repair Program report finalized
- Task 5 Level 2 Walkway Bridge remediation ongoing
- Phase III should be completed end of FY23
- RSMU will use guidance developed under Phase III to address concrete repairs as part of O&M at Morris Sheppard Dam

### Planned Schedule



Note: BRA Fiscal Year Runs Sept to Aug

### Budget Summary

FY 2023 Budget	\$559,000
FY 2023 Project Expenses (As of 5/31/2022)	\$61,145