



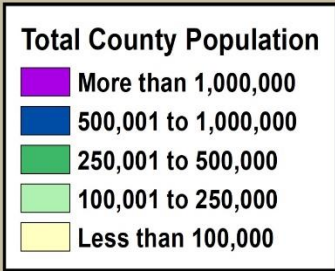
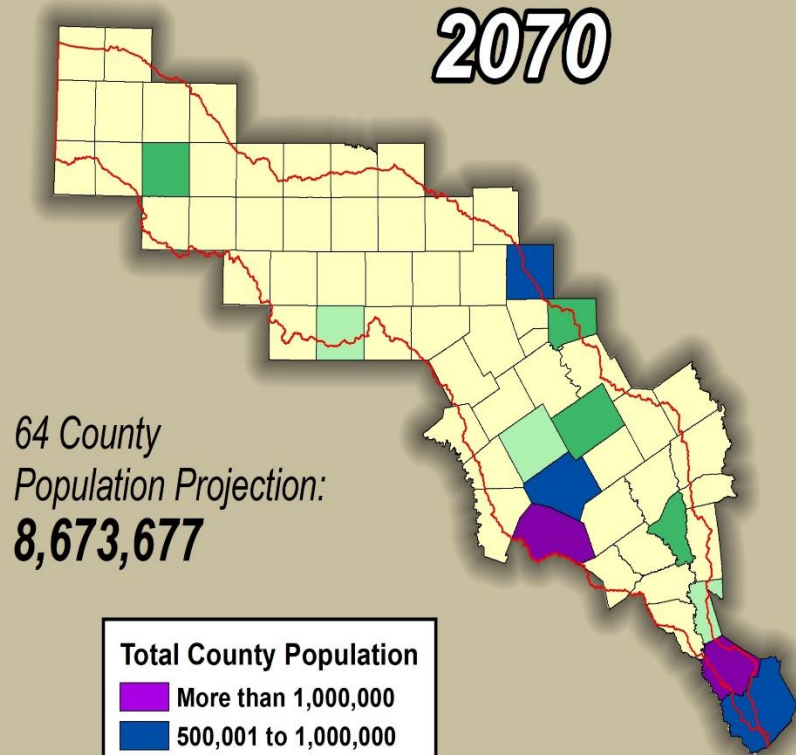
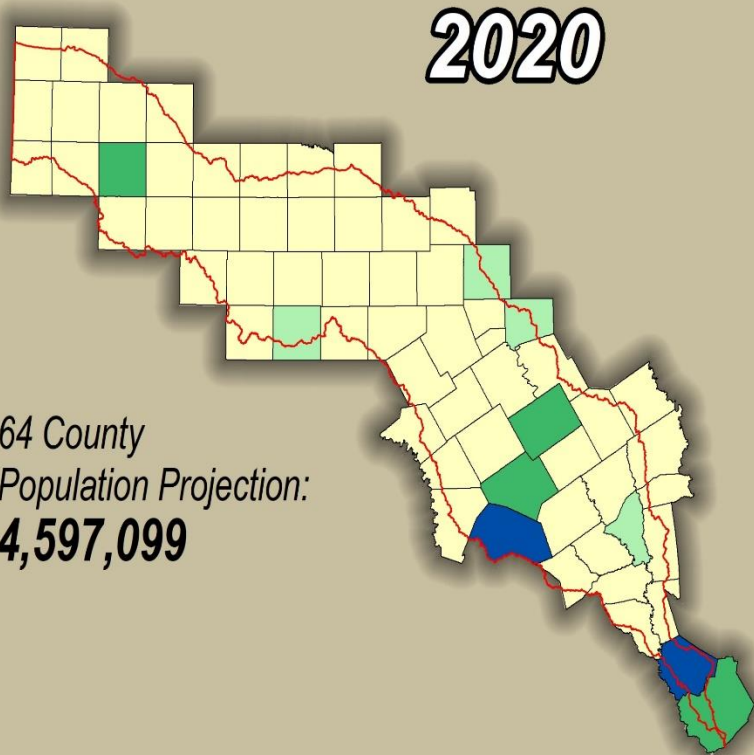
Integrated Water Resource Plan (IWRP)

***Presented by
Jon King***

Special Projects & Strategic Initiatives Manager

Brazos Basin Population Growth

Projected Increase: 4,076,578



Prepared by



IGCR\Population\County Pop2020to2070-9x16-2021.mxd



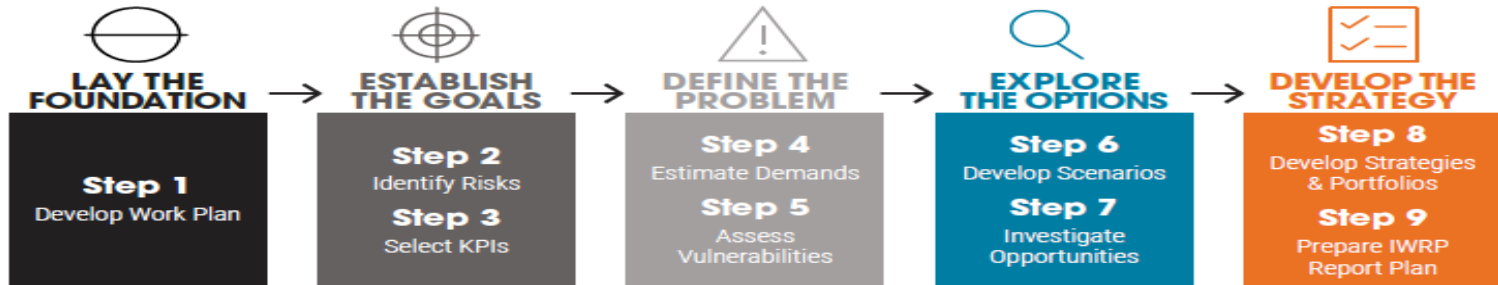
IWRP

Answers two key questions:

1. ***What else?*** What else does the BRA need to do beyond the Regional Water Planning process to meet its water needs?
2. ***What next?*** After the currently planned projects are completed, what should the BRA do next to meet future needs?



IWRP



Benefits

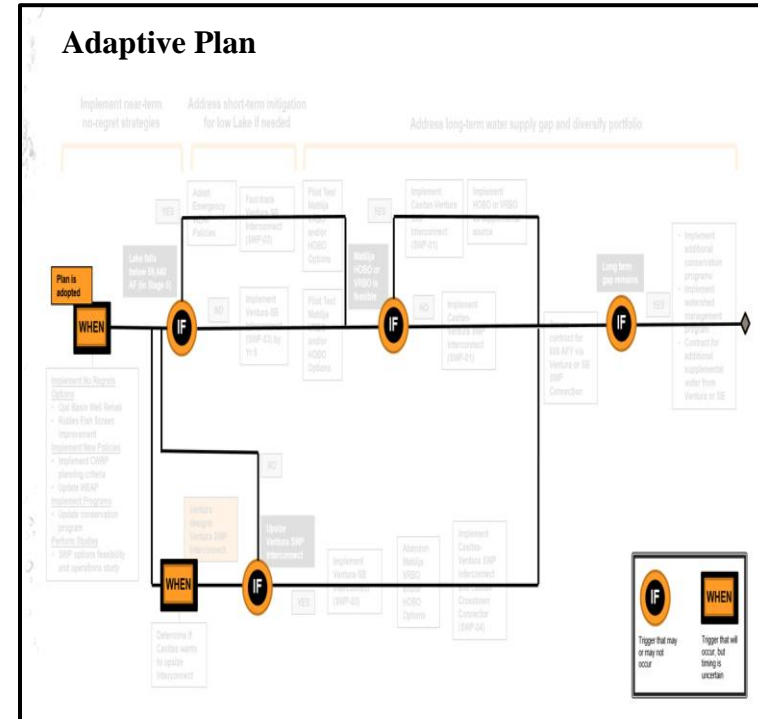
- Guide for development of integrated, reliable, resilient, and sustainable water supply resources
- Incorporates advanced planning, modeling, and decision making
- Considers risk and uncertainty in the planning process
- Includes stakeholder involvement
- Establishes a repeatable framework for project evaluation and prioritization



IWRP

How is it different?

- Considers risk criteria and provides a prioritization framework
- Multiple scenarios of future water demand
- Integration for comprehensive basin-wide plan
- Results in an adaptive roadmap for future water supply development





IWRP

- **Phase I**
 - **Little River Watershed IWRP**
 - **“Pilot” for Basin-Wide IWRP**
 - **Support current decision-making process for additional water supplies**
 - **Contain all elements of the Basin-Wide IWRP**
 - **Approximately 18 months to complete**



**Brazos
River
Authority**