



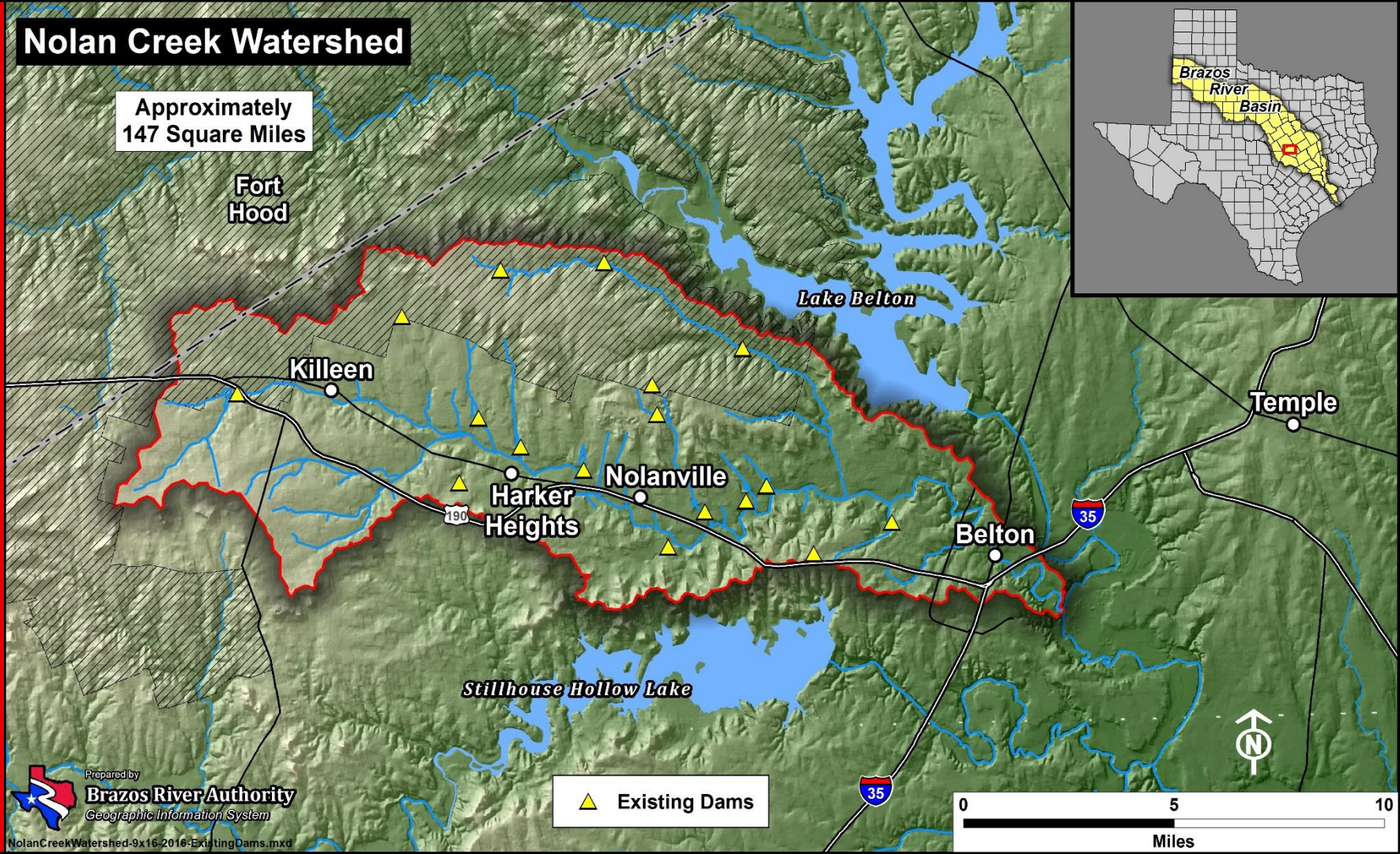
Nolan Creek Flood Protection Planning Grant

***Presented by
David Collinsworth
Manager, Central/Lower Basin***



Nolan Creek Watershed

Approximately
147 Square Miles



Fort Hood

Killeen

Harker Heights

Nolanville

Belton

Temple

Lake Belton

Stillhouse Hollow Lake

▲ Existing Dams



“BE IT RESOLVED that the Board of Directors of the Brazos River Authority hereby authorizes the General Manager/CEO to negotiate and execute an Interlocal Agreement with the Central Texas Council of Governments to provide a cash contribution of \$10,000 in support of the Nolan Creek Flood Protection Planning Study.”



Brazos River Authority